



**PURE**  
POLARIS



**2010» APPAREL & ACCESSORIES**



# GEAR BUILT FOR ALL TERRAIN. MOUNTAINS. MILES. MOGULS.



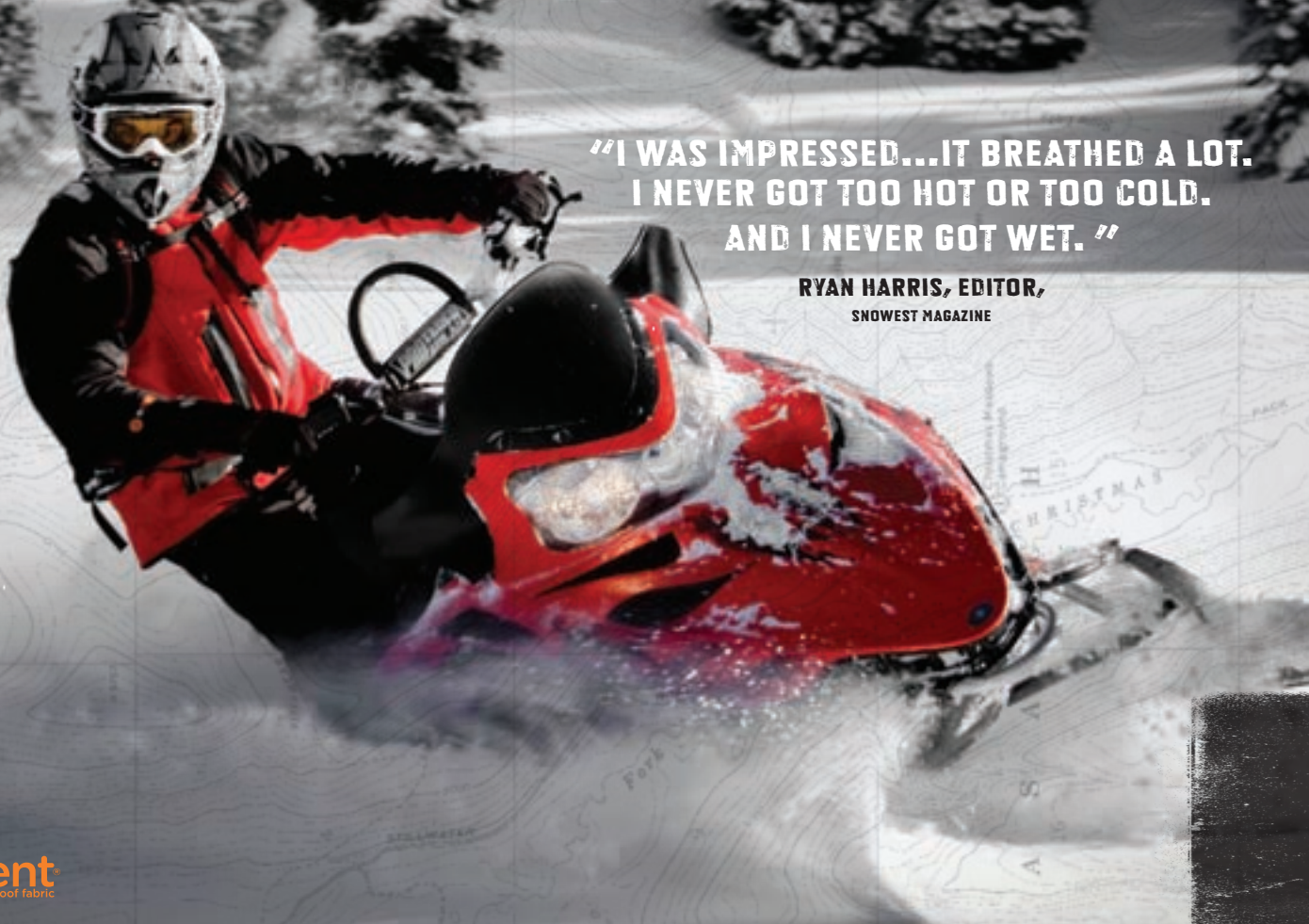
Like Polaris snowmobiles, Pure Polaris® apparel and accessories are designed to give you Terrain Dominating Control. Gear specifically designed to tackle the steep and deep, or comfortably click off two hundred miles of trail. Gear to boondock, ditch bang, rip the backcountry or tour to the next time zone with your club. It's all here. Everything you need to layer up when the temperature drops. Everything you want to customize, boost performance, add storage, and protect your sled. Dominate any weather, any snow depth, any terrain ... **WITH PURE POLARIS.**





2010 ACCESSORIES &

# APPAREL



**"I WAS IMPRESSED...IT BREATHED A LOT. I NEVER GOT TOO HOT OR TOO COLD. AND I NEVER GOT WET."**

**RYAN HARRIS, EDITOR,  
SNOWEST MAGAZINE**

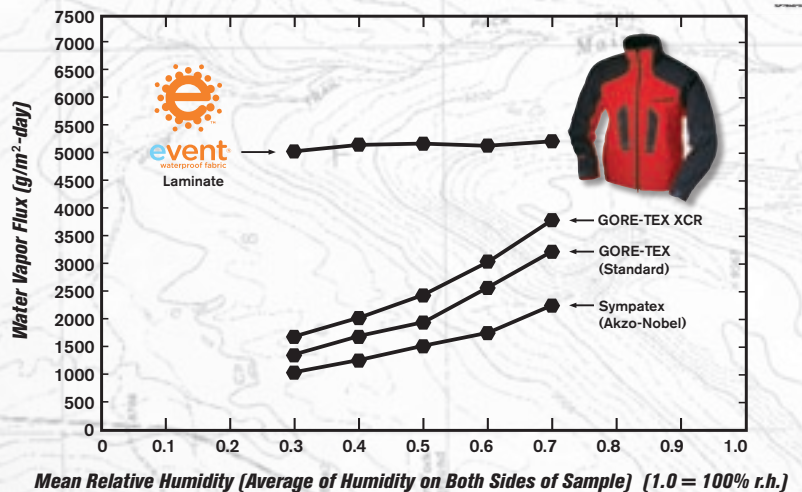


## LET THE SWEAT OUT WITH EVENT DIRECT VENTING TECHNOLOGY

Looking for mountain apparel that breathes better than GORE-TEX®? Stop looking. Pure Polaris offers outerwear for deep-snow riders featuring eVent® fabrics. It's just as waterproof as GORE-TEX®, but has far greater breathability. Sweat moves directly to the outside of the fabric fast. That keeps even the most high-energy mountain rider dry inside and out.

Found exclusively on Pure Polaris apparel, eVent Direct Venting Technology is available in our Men's and Women's Mountain eVT Jacket, Mountain eVT Bibs and Pants, and select gloves. To see the science behind this amazing technology, go to [www.Polariskeepsyoudry.com](http://www.Polariskeepsyoudry.com).

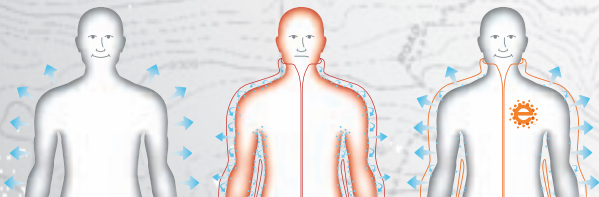
eVent Fabrics allow sweat to quickly evaporate to the outside, keeping you dry on the inside. Simply said, eVent Fabrics **let the sweat out.**



Test results from US Army's Soldier Systems Center, Natick, MA using a Dynamic Moisture Permeation Cell (DMPC, ASTM F2298). Courtesy of Phillip W. Gibson

### "BREATHABILITY" COMPARISON OF COMMERCIAL OUTERWEAR SHELL LAYERS

In a test administered by the US Army's Soldier Systems Center in Natick, MA, eVent® fabric was proven to be more consistently breathable and more breathable overall than GORE-TEX®. While GORE-TEX® technology required time and moisture to activate breathability, eVent® fabric began breathing from the moment the test started – and at a much higher level.



no jacket  
natural evaporative cooling

ineffective evaporative cooling  
you soak in your own sweat

eVent Fabric  
evaporative cooling maintained with eVent Fabric

GORE-TEX® is a registered trademark of W. L. Gore & Associates, Inc.



You can't fool Mother Nature, or predict her mood. Winter winds, snowfall and temperatures can change overnight. So be prepared for any weather with Pure Polaris apparel. It's built by riders for riders, and features quality construction and the latest fabrics, insulation and styles so you can enjoy every ride and outdoor winter activity.

## WHAT KIND OF RIDER ARE YOU?

The following symbols appear next to many of the products in this catalog. They represent our premium Pure apparel lines: Velocity and Octane. Each line is designed with a specific kind of rider in mind. The descriptions below are a general guideline to help you decide which line to look for as you choose gear for your riding style. We realize your style and needs are unique to you, so all Pure products can be seamlessly mixed and matched in an endless array of customizable options.



**CONDITIONS:** Colder, dryer.  
**TERRAIN:** Flatter, hard pack.

Feed your need for speed with our Velocity apparel for the performance rider. If you're a rider who never backs down from a challenge and a straight line – Velocity is for you. Velocity apparel means racing across a lake at high speed and not feeling the wind-chill. Designed for warmth and versatility, with high performance graphics that express the Velocity personality.



**CONDITIONS:** Warmer, wetter.  
**TERRAIN:** Mountainous, moguls.

Octane apparel is designed for those who don't ride trails – they blaze them. Pure Octane outerwear has flexibility that won't restrict your mobility or imagination over the snow or above it. Designed for layering, the jackets provide versatility for all riding conditions. Wear the shell alone on warmer days or wear with a liner in colder weather.

<b>MEN'S JACKETS</b>	<b>PGS. 4-9</b>
<b>MEN'S FLEECE &amp; BASE LAYERS</b>	<b>PG. 5</b>
<b>PROTECTIVE GEAR</b>	<b>PG. 8</b>
<b>WOMEN'S JACKETS</b>	<b>PGS. 10-11</b>
<b>MEN'S BIBS &amp; PANTS</b>	<b>PGS. 12-13</b>
<b>WOMEN'S BIBS &amp; PANTS</b>	<b>PG. 14</b>
<b>YOUTH JACKETS &amp; BIB</b>	<b>PG. 15</b>
<b>HELMETS &amp; GOGGLES</b>	<b>PGS. 16-21</b>
<b>GLOVES</b>	<b>PGS. 22-23</b>
<b>MEN'S CASUAL</b>	<b>PGS. 24-25</b>
<b>WOMEN'S CASUAL</b>	<b>PGS. 26-27</b>
<b>BALLCAPS &amp; HEADWEAR</b>	<b>PGS. 28-29</b>
<b>BALACLAVAS</b>	<b>PG. 29</b>
<b>BOOTS</b>	<b>PG. 30</b>
<b>BAGS</b>	<b>PG. 31</b>
<b>FIT CHARTS</b>	<b>PG. 31</b>

# MEN'S JACKETS

**PURPOSE-BUILT FOR THE STEEP AND DEEP.** To dominate in the mountains, you need riding gear as purpose-built as your sled. Start with a good base layer, then a quality insulating layer, topped off by your favorite Polaris un-insulated jacket. They're designed with the total package of mountain features, to keep you in total comfort at any elevation.



## A. MOUNTAIN EVT JACKET

This next generation Mountain jacket, featuring eVent<sup>®</sup> fabrics, breathes faster than GORE-TEX<sup>®</sup> and other waterproof fabrics. Equipped with more features, including full zip vents and extra pockets, Mountain eVT is for the steep and deep. Add a Polaris layering system to ride warm and dry all day.

**SHELL:** 100% Nylon Shell.

**WATERPROOF BREATHABLE:** eVent<sup>®</sup> membrane.

**INSULATION:** Non-insulated, mesh lined.

**VENTING:** Full zip vents at underarm and back (vertical vents, won't interfere with backpack).

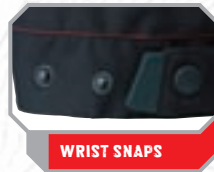
**POCKETS:** Four exterior pockets, one with chamois cloth inside to wipe goggles/shield, two interior pockets.

**ADDITIONAL FEATURES:** Waterproof two-way front zipper, zipper garages on exterior pockets create tight seal. Microfleece rollover collar for rider comfort. Snow skirt, neck drawcord and adjustable back drawcord keep snow out. Wrist snaps reduce ice buildup.

**2860112** | Red / Black | Men's M-2XL (No Talls) 379.99 us

**2869030** | Gray / Camo | Men's S-2XL, MT-XLT 379.99 us

**2869031** | Black | Men's S-3XL, MT-XLT 379.99 us



## B. OCTANE JACKET

Our newest mountain jacket has a high level of both waterproofing and breathability. It's 100% seam sealed and fully vented. Best of all, it's steeped in features you need in the steep and deep, including a neck drawcord, cuff snaps, snow skirt and more.

**SHELL:** 100% Nylon

**WATERPROOF BREATHABLE:** Reissa<sup>®</sup> (20,000mm/20,000g).

**INSULATION:** Non-insulated, mesh lined.

**VENTING:** Full zip vents at underarm and back (vertical vents, won't interfere with backpack).

**POCKETS:** Four exterior pockets, one with chamois cloth inside to wipe goggles/shield, two interior pockets.

**ADDITIONAL FEATURES:** Waterproof two-way front zipper, zipper garages on exterior pockets create tight seal. Microfleece rollover collar for rider comfort. Snow skirt, neck drawcord and adjustable back drawcord keep snow out. Wrist snaps reduce ice buildup.

**2860113** | Black / Gray Plaid | Men's M-2XL 249.99 us



GORE-TEX<sup>®</sup> is a registered trademark of W. L. Gore & Associates, Inc.

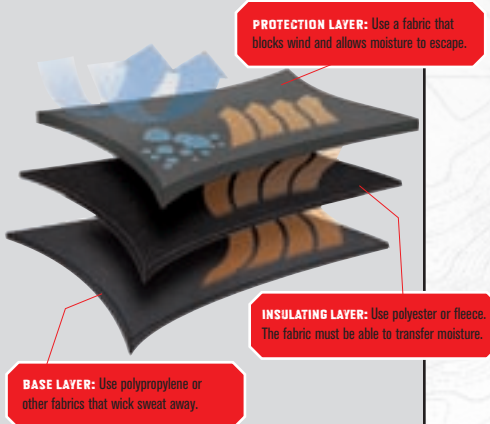
### ADULT SIZE CODES FOR ORDERING

See pg. 31 for size & fit charts.

Don't forget to add the two-digit size code at the end of the part number!  
See size availability in the item description, not all sizes available in all styles.

XS = 01	M = 03	M - Tall = 05	L - Short = 07	XL = 09	XL Tall = 11	2XL Tall = 13
S = 02	M - Short = 04	L = 06	L - Tall = 08	XL Short = 10	2XL = 12	3XL = 14

**THE ANATOMY OF EFFECTIVE LAYERING.**



There is no perfect layering system. Everyone has different needs. But there are basic rules for layering. The base layer needs to wick sweat away from your skin. Polypropylene is good, cotton is bad. The insulating layer must work with the base layer to transfer moisture. Polyester and fleece are best. A good outer layer must block wind and also allow moisture to escape. Add or remove layers as needed to stay warm and comfortable.



**STEP 1**

- Base Layer
- Performance Shirt, pg. 24
- Polypropylene Thermal Shirt
- Polypropylene Pant



**STEP 2**

- Insulating Layer
- Backcountry Riding Shirt
- Quarter-Zip Shirt
- Quarter-Zip Pant
- Barrier Fleece Jacket
- Barrier Fleece Vest



**STEP 3**

- Protection Layer
- Mountain eVT Jacket
- Octane Jacket

The three layering combinations above contain different layers giving you different results. Try adding and removing layers to meet your level of warmth and comfort. Ideal layering system under eVent Jacket & Bib for a temp range of 10°F to 25°F.

**THE THREE W'S TO COMFORT: WICKING, WARMTH, WATERPROOF**

**LIGHT WEIGHT LAYER**



**C. POLYPROPYLENE THERMALS**

- » 100% Polyester
- » Microfiber moisture wicking fabric
- » Provides thermal insulation
- » Pill-proof durability

2868046	Mock Neck, Black	S-2XL	34.99 us
2868047	Men's Pant, Black	S-2XL	34.99 us

**MEDIUM WEIGHT LAYER**



**D. BACKCOUNTRY RIDING SHIRT**

- » 84% Nylon, 16% Spandex
- » Thermal waffle construction
- » Storage pocket
- » For layering or streetwear

2869085	Red / Gray	S-2XL	49.99 us
2869086	Black / Gray	S-2XL	49.99 us

**MEDIUM WEIGHT LAYER**



**E. QUARTER-ZIP RIDING SHIRT & PANTS**

- » 100% Polyester
- » Shirt features a zip mock neck
- » Pant features draw cord waist & rear pocket
- » Can be worn alone or as a layering piece

2869083	Shirt, Black	S-2XL	89.99 us
2867051	Pant, Black	S-2XL	89.99 us



**HEAVY WEIGHT LAYER**



**F. BARRIER FLEECE JACKET, VEST & PANT**

- » 100% Polyester
- » Anti-pill microfleece
- » Jackets with drop tail hem & elastic drawcord
- » Left chest pocket
- » Vest not shown

2868039	Jacket, Black / Red	S-2XL	69.99 us
2868038	Jacket, Black	S-2XL	69.99 us
2869082	Vest, Black	S-2XL	49.99 us

**MEN'S JACETS**

WOMEN'S JACETS

MEN'S BIBS & PANTS

WOMEN'S BIBS & PANTS

YOUTH JACETS & BIBS

HELMETS & GOGGLES

GLOVES

MEN'S CASUAL

WOMEN'S CASUAL

BALL CAPS & HEADWEAR

BOOTS

BAGS & FIT CHARTS

# MEN'S JACKETS

**PURE WARMTH, MOBILITY AND PROTECTION.** Our men's insulated jackets get better and better. New features, new style choices. Every one is designed to our high standards and your high expectations. They are purpose-built for the way you ride, with the latest high-tech fabrics and the smartest high-performance features.



## A. RIPPER JACKET

Integrated insulation makes this "the" jacket for the coldest conditions. It's ideal for adrenaline junkies, high speed fanatics and guys who keep riding no matter how cold it gets. There's now even a place for an iPod<sup>®</sup> controller on the sleeve.

**SHELL:** 420 denier Ripstop nylon/660 denier black Taslan.<sup>®†</sup>

**WATERPROOF BREATHABLE:** Reissa<sup>®†</sup> (3000mm/3000g).

**INSULATION:** Hollofil II<sup>®†</sup> fixed insulation, 200g in body, 150g in sleeves.

**VENTING:** Underarm vents.

**POCKETS:** Two handwarmer pockets, one key pocket on sleeve, multiple internal storage pockets.

**ADDITIONAL FEATURES:** Pre-curved sleeves, drop tail, D-ring, adjustable wrist and waist tabs, snow skirt and microfleece rollover collar.

**SAFETY:** 3M<sup>®†</sup> reflective ellipse on back.

<b>2860115</b>	Red	Men's S-3XL, LT-2XLT	199.99 us
<b>2860116</b>	Black	Men's S-5XL, LT-2XLT	199.99 us
<b>2860117</b>	Blue	Men's S-3XL (No Talls)	199.99 us
<b>2860118</b>	Orange	Men's S-2XL (No Talls)	199.99 us
<b>2860139</b>	iPod Controller		39.99 us



## ROCK THE TRAILS!

Accessory iPod<sup>®†</sup> Controller fits Ripper and Diva Jackets and integrates into sleeve pad allows you to operate your iPod<sup>®†</sup> remotely with gloves on. Fits iPods with docking connection.

<b>2860139</b>	iPod <sup>®†</sup> Controller	39.99 us
----------------	-------------------------------	----------







**B. TORQUE JACKET**

One of our most popular jackets. The ultimate combination of quality, construction, comfort and price.

- SHELL:** 420 denier Ripstop nylon/660 denier Taslan.<sup>®†</sup>
- WATERPROOF BREATHABLE:** Reissa<sup>®†</sup> (2000mm/2000g).
- INSULATION:** Hollofil II,<sup>®†</sup> 200g in body, 150g in sleeves.
- POCKETS:** Two handwarmer pockets, two internal pockets.
- ADDITIONAL FEATURES:** Pre-curved sleeves, drop tail, adjustable wrist and waist tabs, snow skirt and microfleece rolover collar.
- SAFETY:** 3M<sup>®†</sup> reflective ellipses on back and sleeve.

2869042	Red   Men's S-2XL	159.99 us
2869043	Black   Men's S-2XL	159.99 us



**C. IQ JACKET**

If you ride hard and you ride often, this is your jacket. With a removable liner and underarm vents, it gives you total climate control. It has aggressive styling and everything you need, even an internal iPod<sup>®†</sup> pocket.

- SHELL:** 420 denier Ripstop nylon/660 denier black Taslan.<sup>®†</sup>
- WATERPROOF BREATHABLE:** Reissa<sup>®†</sup> (3000mm/3000g).
- INSULATION:** Removable liner with pockets, Thermolite<sup>®†</sup> Plus 200g in body, 150g in sleeves.
- VENTING:** Underarm and exhaust back vents.
- POCKETS:** Two handwarmer pockets, internal pocket with chamois cloth for wiping goggles/shield, iPod<sup>®†</sup> pocket with cord guides, cell phone, ball cap and spark plug pockets.
- ADDITIONAL FEATURES:** Pre-curved sleeves, drop tail, adjustable wrist & waist tabs, snow skirt.
- SAFETY:** 3M<sup>®†</sup> reflective ellipse patches on sleeve and back. Reflective tape on shoulder.

2869033	Red   Men's S-3XL	249.99 us
2869034	Black   Men's S-3XL	249.99 us



**ADULT SIZE CODES FOR ORDERING**

See pg. 31 for size & fit charts.

Don't forget to add the two-digit size code at the end of the part number!  
See size availability in the item description, not all sizes available in all styles.

XS = 01	M = 03	M - Tall = 05	L - Short = 07	XL = 09	XL Tall = 11	2XL Tall = 13
S = 02	M - Short = 04	L = 06	L - Tall = 08	XL Short = 10	2XL = 12	3XL = 14

- MEN'S JACKETS
- WOMEN'S JACKETS
- MEN'S BIBS & PANTS
- WOMEN'S BIBS & PANTS
- YOUTH JACKETS & BIBS
- HELMETS & GOGGLES
- GLOVES
- MEN'S CASUAL
- WOMEN'S CASUAL
- BALL CAPS & HEADWEAR
- BOOTS
- BAGS & FIT CHARTS

# MEN'S JACKETS



**VELOCITY**  
INSULATED

## B. OFF-ROAD JACKET

The ideal, enduro-style, un-insulated jacket for riding on those not-so-cold winter days, as well as for ATV riding. Ventilated, multiple storage pockets, hydration-pack compatible.

**SHELL:** Ballistic nylon.

**WATERPROOF BREATHABLE:** Water resistant.

**INSULATION:** Non-insulated.

**VENTING:** Shoulder intake, rear vertical exhaust vents.

**POCKETS:** 11 total pockets including three chest, two hand, one sleeve, two interior, two rear and one sleeve ID pocket.

**ADDITIONAL FEATURES:** Hydration/communication rubber port, removable sleeves that zip off and can be stored in rear cargo pocket, articulated sleeves with additional elbow padding, adjustable Velcro® waist, side zips to allow for total comfort while in a seated position, Velcro® wrist adjustments.

2869256 | Red | Men's S-3XL 199.99 us

2869255 | Black | Men's S-3XL 199.99 us

## A. RACE CREW JACKET

Loud and proud! The official Polaris jacket worn by our race crew, right down to the dragon logo.

**SHELL:** 660 denier Taslan.®†

**WATERPROOF BREATHABLE:** Reissa®† (3000mm/3000g).

**INSULATION:** Thermolite®† Plus, 200g in body, 150g in sleeves.

**VENTING:** Underarm vents.

**POCKETS:** Two handwarmer pockets, one chest pocket, one sleeve key pocket and multiple internal pockets.

**ADDITIONAL FEATURES:** Pre-curved sleeves, microfleece collar, adjustable wrist and waist tabs, snow skirt, D-ring.

**SAFETY:** 3M®† reflective piping and ellipse patches on sleeve.

2860003 | Black | Men's S-3XL (MT-XLT) 249.99 us



**OCTANE**  
UNINSULATED



**VELOCITY**  
INSULATED

## C. TRAVEL JACKET

Show your Polaris pride everywhere you go in this lightweight and insulated jacket complete with dragon graphics.

**SHELL:** 660 denier Taslan.®†

**WATERPROOF:** Polyurethane coated.

**INSULATION:** 140g Polyfil.®†

**POCKETS:** Front handwarmer pocket.

**ADDITIONAL FEATURES:** Adjustable wrist tabs.

2869005 | Black | Men's S-2XL 79.99 us



## D. SAFETY GEAR

» CE-certified protective gear

2869260 | Performance Safety Jacket | M-L-XL-2X 179.99 us

2869258 | Titanium Chest Protector, Adult OSFM 99.99 us

2869261 | Knee/Shin Guards OSFM 39.99 us

**E. ASCENT XT SOFTSHELL JACKET**

The perfect light jacket. Use it for layering in cold weather and for spring and fall rides. Windproof and waterproof with exterior seam tape.

- SHELL:** Light flexible softshell fabric, 60% polyester, 40% nylon.
- WINDPROOF/WATERPROOF BREATHABLE:** (3000mm/3000g) fabric delivers windproof, waterproof and breathable performance.
- POCKETS:** Two handwarmer pockets, one chest pocket.
- ADDITIONAL FEATURES:** Taped exterior seams for maximum waterproof protection, drawcord waist helps keep wind and snow out. Microfleece rollover collar.

2869109 | Black | Men's S-3XL 149.99 us



**OCTANE**  
UNINSULATED

**F. ASCENT SOFTSHELL JACKET**

Great for spring and fall rides, and perfect for layering in cold weather. The flexible softshell gives excellent mobility. Windproof, waterproof and breathable.

- SHELL:** Light flexible softshell fabric, 60% polyester, 40% nylon.
- WINDPROOF/WATERPROOF BREATHABLE:** (3000mm/3000g) fabric delivers windproof, waterproof and breathable performance.
- POCKETS:** Two handwarmer pockets, one chest pocket.
- ADDITIONAL FEATURES:** Drawcord waist helps keep wind and snow out. Polaris logo on chest.

2869110 | Burnt Orange | Men's S-3XL 119.99 us

\* Limited Availability

**G. WINDBLOC JACKET**

The ultimate fleece because it adds warmth, blocks the cold wind and breaths. Perfect for layering under your snowmobile jacket or as casual wear after the ride.

- SHELL:** Three-layers, outer fleece, wind-blocking laminate and red interior fleece.
- WINDPROOF BREATHABLE:** (3000mm/3000g) fabric delivers windproof and breathable performance.
- POCKETS:** Two handwarmer pockets, left chest pocket.

2868037 | Black | Men's S-2XL 129.99 us



**VELOCITY**  
INSULATED



**H. RAIL JACKET**

Attention weekend warriors. This jacket makes a statement on and off the trails, with many features perfect for riding and snowboarding.

- SHELL:** 660 denier Taslan.<sup>®†</sup>
- WATERPROOF BREATHABLE:** (3000mm/3000g).
- INSULATION:** Thermolite.<sup>®†</sup> Plus, 200g in body, 150g in sleeves.
- VENTING:** Underarm vents.
- POCKETS:** Three exterior pockets, chest pocket has chamois for wiping goggles, two interior pockets.
- ADDITIONAL FEATURES:** Magnetic front flap closure, wrist gaiters, snow skirt with silicone grippers to connect to snowpants, adjustable neck toggle.
- SAFETY:** 3M.<sup>®†</sup> reflective ellipse on back.

2868017 | Charcoal / Camo | Men's S-2XL 199.99 us

MEN'S JACETS

WOMEN'S JACETS

MEN'S BIBS & PANTS

WOMEN'S BIBS & PANTS

YOUTH JACETS & BIBS

HELMETS & GOGGLES

GLOVES

MEN'S CASUAL

WOMEN'S CASUAL

BALL CAPS & HEADWEAR

BOOTS

BAGS & FIT CHARTS

**ADULT SIZE CODES FOR ORDERING**

See pg. 31 for size & fit charts.

Don't forget to add the two-digit size code at the end of the part number! See size availability in the item description, not all sizes available in all styles.

XS = 01	M = 03	M - Tall = 05	L - Short = 07	XL = 09	XL Tall = 11	2XL Tall = 13
S = 02	M - Short = 04	L = 06	L - Tall = 08	XL Short = 10	2XL = 12	3XL = 14

# WOMEN'S JACKETS

**PURE COMFORT AND FASHION.** Rest assured, Pure Polaris women's jackets are built for riding. Beneath their feminine designs are the same high-tech fabrics, warm and breathable insulation, and functional features proven in our men's jackets. This year, the line gets a makeover with some updated colors and designs.

## A. DIVA JACKET

Our best selling women's jacket. Built for all-day comfort like our men's jackets, but with feminine styling and fit. There's even a spot for an iPod®+ controller on the sleeve.

**SHELL:** 420 denier Ripstop nylon/660 denier black Taslan.®+

**WATERPROOF BREATHABLE:** Reissa®+ (3000mm/3000g).

**INSULATION:** Thermolite®+ Plus 200g in body, 150g in sleeves.

**VENTING:** Zippered underarm vents with interior mesh.

**POCKETS:** Internal pocket with chamois to wipe shield, key pocket on sleeve. Two external pockets.

**ADDITIONAL FEATURES:** Adjustable waist drawcord, microfleece rolover collar, snowskirt, iPod®+ Controller adaptable.

**SAFETY:** 3M®+ reflective ellipse on back.

2860121	Pink   S-2XL	199.99 us
2860119	Red   S-2XL	199.99 us
2860120	Black   S-2XL	199.99 us
2860139	iPod Controller	39.99 us



## ROCK THE TRAILS!

Accessory iPod Controller fits Ripper and Diva Jackets and integrates into sleeve pad allows you to operate your iPod®+ remotely with gloves on. Fits iPods with docking connection.

2860139	iPod Controller	39.99 us
---------	-----------------	----------



## B. PEPPER JACKET

Our insulated, three-quarter length jacket is designed both for comfort and to fit & flatter. A drawcord waist gives a feminine silhouette.

**SHELL:** 420 denier Ripstop nylon/660 denier Taslan.®+

**WATERPROOF BREATHABLE:** Reissa® (3000mm/3000g).

**INSULATION:** Thermolite®+ Plus 200g in body, 150g in sleeves.

**VENTING:** Underarm and back vents.

**POCKETS:** Two exterior pockets, one key pocket on sleeve and two interior pockets.

**ADDITIONAL FEATURES:** Microfleece collar rolover, two-way zipper, interior drawcord at waist.

**SAFETY:** 3M®+ reflective ellipse on back and wrist.

2869053	Pink   S-XL	219.99 us
2869054	Red   S-2XL	219.99 us



MEN'S JACKETS

WOMEN'S JACKETS

MEN'S BIBS & PANTS

WOMEN'S BIBS & PANTS

YOUTH JACKETS & BIBS

HELMETS & GOGGLES

GLOVES

MEN'S CASUAL

WOMEN'S CASUAL

BALL CAPS & HEADWEAR

BOOTS

BAGS & FIT CHARTS

**C. WOMEN'S MOUNTAIN EVT JACKET**



High on the mountain, there's equal opportunity for women in this new jacket. It's cut for women, yet features the revolutionary eVent® fabric for outstanding breathability, and all the right features for riding in deep powder. Because it's uninsulated, you can wear it over just the layers for the day's ride.

**SHELL:** 100% Nylon Shell. Waterproof Breathable: eVent® fabric.

**INSULATION:** Non-insulated, mesh lined.

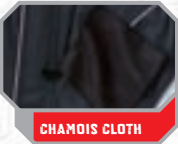
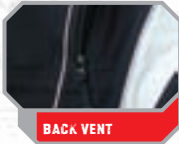
**VENTING:** Full zip vents at underarm and back (vertical vents, won't interfere with backpack).

**POCKETS:** Three exterior pockets, one with chamois cloth inside to wipe goggles/shield, two interior pockets.

**ADDITIONAL FEATURES:** Waterproof two-way front zipper. Microfleece rolover collar for rider comfort. Snow skirt and adjustable back drawcord keep snow out. Audio port equipped.

**SAFETY:** 3M® reflective ellipse patches.

2869047	Black / Pink	S-2XL	329.99 us
2869046	Black / Red	S-2XL	329.99 us



**D. ASCENT SOFTSHELL JACKET**

**SHELL:** Three-layered; hard-face outer with ripstop texture, soft fleece interior and windproof in between layer.

**WINDPROOF/WATERPROOF BREATHABLE:** (3000mm/3000g) fabric delivers windproof, waterproof and breathable performance.

**POCKETS:** Two zippered exterior pockets and one chest pocket.

**ADDITIONAL FEATURES:** Drawcord waist helps keep wind and snow out.

2860122	Pearl	S-XL	119.99 us
---------	-------	------	-----------

**E. ABBY JACKET**

**SHELL:** 100% Polyester, anti-pill fleece.

**POCKETS:** Two zippered exterior pockets.

**ADDITIONAL FEATURES:** Great for layering or just wearing around the cabin.

2860128	Chocolate	S-2XL	79.99 us
---------	-----------	-------	----------

**F. HAILEY FLEECE**

**SHELL:** 100% Polyester, anti-pill fleece.

**POCKETS:** Two zippered exterior pockets.

**ADDITIONAL FEATURES:** Great for layering or just wearing around the cabin.

2869081	Magenta	S-2XL	89.99 us
---------	---------	-------	----------

\* Limited Availability

**G. WOMEN'S BARRIER FLEECE JACKET**

**SHELL:** 100% Polyester, anti-pill fleece.

**POCKETS:** Multiple storage pockets.

**ADDITIONAL FEATURES:** Drop tail hem & elastic drawcord.

2868041	Black	S-2XL	59.99 us
---------	-------	-------	----------

**ADULT SIZE CODES FOR ORDERING**

See pg. 31 for size & fit charts.

Don't forget to add the two-digit size code at the end of the part number!  
See size availability in the item description, not all sizes available in all styles.

XS = 01	M = 03	M - Tall = 05	L - Short = 07	XL = 09	XL Tall = 11	2XL Tall = 13
S = 02	M - Short = 04	L = 06	L - Tall = 08	XL Short = 10	2XL = 12	3XL = 14

# MEN'S BIBS & PANTS

**BIBS FOR EVERY ELEVATION.** Mountain riders need a different jacket than flatland riders. Same goes for their bibs. Pure Polaris offers a variety of styles of bibs and pants, all made with the latest outdoor fabrics and performance-minded details. No matter what elevation you prefer, Pure Polaris has what you need to match your riding style and budget.



## A. MOUNTAIN EVT BIB & PANT



Designed by mountain riders and Polaris engineers. Features premium eVent<sup>®</sup> fabrics, the latest in waterproof breathable technology. Together with comfort-driven details including a Neoprene harness with Velcro<sup>®</sup> straps, its uninsulated, lightweight construction makes it ideal for layering. Wear with coordinating jacket and turn a good day into a great day of riding.

**SHELL:** 100% Nylon Shell.

**WATERPROOF BREATHABLE:** eVent<sup>®</sup> membrane.

**INSULATION:** Non-insulated, mesh lined.

**POCKETS:** Two exterior pockets.

**ADDITIONAL FEATURES:** Fully mesh-lined, neoprene harness with Velcro<sup>®</sup> instead of buckles, crossable straps to prevent pectoral irritation, elastic back, waterproof two-way front zipper, full-length side zipper opens to hip, zipper garages, cuff straps with snaps for snug fit around boots, gaiters. Boot tabs to secure shell to boot straps or laces. Removable knee armor.

<b>2869061</b>	Gray	Men's Bib, S-3XL	349.99 us
<b>2869062</b>	Black	Men's Bib, S-3XL	349.99 us
<b>2869063</b>	Black	Men's Pant, S-3XL	329.99 us
<b>2869064</b>	Gray	Men's Pant, S-3XL	329.99 us

Includes Talls (M-2X)





**B. RIPPER BIB**

Filled with performance features to enhance your high-performance ride. Aggressive styling to match your Polaris jacket.

- SHELL:** 420 denier Ripstop nylon/660 denier Taslan.<sup>®†</sup>
- WATERPROOF BREATHABLE:** Reissa<sup>®†</sup> (3000mm/3000g).
- INSULATION:** 200g ThermoLite<sup>®†</sup> Plus fixed insulation.
- POCKETS:** Two hand warmer pockets.
- ADDITIONAL FEATURES:** Pre-curved knees, gusseted crotch and four-way stretch side panels, lower back protective padding, adjustable suspenders. Boot lace tabs, waist tabs and leg gaiters.
- SAFETY:** 3M<sup>®†</sup> reflective ellipse patches on back of legs.

2869065	Red   Men's S-3XL	219.99 us
2869067	Black   Men's S-3XL	219.99 us

Includes Talls (L-XL)

**C. REACTOR BIB**

Features the same fit and quality as our Ripper bibs, in basic black to match any jacket and keep you warm and dry on any sled.

- SHELL:** 660 denier Taslan.<sup>®†</sup>
- WATERPROOF BREATHABLE:** Reissa<sup>®†</sup> (3000mm/3000g).
- INSULATION:** 200g ThermoLite<sup>®†</sup> Plus fixed insulation.
- POCKETS:** Two hand warmer pockets.
- ADDITIONAL FEATURES:** Two-way full-length zippers, adjustable suspenders, adjustable leg gaiters and boot tab, articulated, reinforced and stretchable knees.
- SAFETY:** 3M<sup>®†</sup> reflective ellipse on back of leg.

2867040	Black   Men's S-5XL	219.99 us
---------	---------------------	-----------

Includes Talls (M-2XL), Shorts (M-XL)

**D. ASCENT SOFTSHELL BIB**

Waterproof, breathable and similar in construction to our eVT Bib, it's great for riding sleds or ATVs in milder weather.

- SHELL:** Flexible, four-way stretch, polyester.
- WATERPROOF BREATHABLE:** (8000mm/5000g).
- POCKETS:** Two zippered front pockets, one zippered back pocket.
- ADDITIONAL FEATURES:** Waterproof zippers, adjustable leg gaiters, zip-off suspenders let you wear as bibs or pants. Exterior seam tape to ensure waterproof protection.
- SAFETY:** 3M<sup>®†</sup> reflective ellipse.

2869117	Black   Men's S-3XL	129.99 us
---------	---------------------	-----------

Includes Talls (L-2XL)

**E. INSULATOR BIB**

Quality has its price. And ours is very affordable, in these warm, fully insulated bibs designed for trail riding and all your winter fun.

- SHELL:** 300 denier Taslan.<sup>®†</sup>
- WATERPROOF BREATHABLE:** (1,000mm) polyurethane coating.
- INSULATION:** 140g of Polyfill<sup>®†</sup>
- POCKETS:** Two hand warmer pockets.
- ADDITIONAL FEATURES:** Full-length zippers, adjustable suspenders, adjustable leg gaiters.
- SAFETY:** 3M<sup>®†</sup> reflective ellipse on back of leg.

2856209	Black   Men's S-3XL	119.99 us
---------	---------------------	-----------

Includes Talls (L-2XL)

- MEN'S JACKETS
- WOMEN'S JACKETS
- MEN'S BIBS & PANTS**
- WOMEN'S BIBS & PANTS
- YOUTH JACKETS & BIBS
- HELMETS & GOGGLES
- GLOVES
- MEN'S CASUAL
- WOMEN'S CASUAL
- BALL CAPS & HEADWEAR
- BOOTS
- BAGS & FIT CHARTS

**ADULT SIZE CODES FOR ORDERING** See pg. 31 for size & fit charts.

Don't forget to add the two-digit size code at the end of the part number! See size availability in the item description, not all sizes available in all styles.	XS = 01	M = 03	M - Tall = 05	L - Short = 07	XL = 09	XL Tall = 11	2XL Tall = 13
	S = 02	M - Short = 04	L = 06	L - Tall = 08	XL Short = 10	2XL = 12	3XL = 14

# WOMEN'S BIBS & PANTS

**BUILT FOR WOMEN WHO RIDE.** You don't wear men's slacks, so don't wear men's bibs. They're bulky and far from flattering. Instead, slip into a pair of Pure Polaris women's bibs. They are fashionable and functional. Choose basic black or a design that matches your Polaris jacket.



## A. WOMEN'S EVT BIB

The ultimate bib for serious deep snow women riders. Features premium eVent<sup>®†</sup> fabrics, the latest technology for the ultimate in breathability and 100% waterproof. Un-insulated and lightweight, perfect for layering and mountain riding.

**SHELL:** 100% Nylon Shell.

**WATERPROOF BREATHABLE:** eVent<sup>®†</sup> membrane.

**INSULATION:** Non-insulated, lightweight construction for mountain riding.

**POCKETS:** Two hand warmer pockets.

**ADDITIONAL FEATURES:** Adjustable suspenders and leg gaiters, knee-length side zippers, fully tapered seams.

**SAFETY:** 3M<sup>®†</sup> reflective ellipse patches.

**2869072** | Black | Women's S-2XL 329.99 us

Includes Talls (M-L)

## B. WOMEN'S ESCAPE BIB

Top performance features along with special suspenders and a clever drop seat for women make this bib the best choice for serious riders.

**SHELL:** 300 denier Cordura.<sup>®†</sup>

**WATERPROOF BREATHABLE:** (3000mm/3000g).

**INSULATION:** 100g Thermolite<sup>®†</sup> Plus.

**POCKETS:** Two hand warmer pockets.

**ADDITIONAL FEATURES:** Adjustable suspenders and leg gaiters, drop-seat design, full-length side zippers, fully tapered seams.

**SAFETY:** 3M<sup>®†</sup> reflective ellipse patches.

**2869071** | Black | Women's S-2XL 209.99 us

Includes Talls (M-L), Petites (M-XL)

## C. DIVA BIB

Our Diva Bib is designed specifically for women riders. It's the perfect complement to our best-selling Diva Jacket, totally insulated and shaped for a perfect fit.

**SHELL:** 420 denier Ripstop nylon/660 denier Taslan.<sup>®†</sup>

**WATERPROOF BREATHABLE:** Reissa<sup>®†</sup> (3000mm/3000g).

**INSULATION:** 140g Polyfil.<sup>®†</sup>

**POCKETS:** Two hand warmer pockets.

**ADDITIONAL FEATURES:** Pre-curved knees, gusseted crotch and four-way stretch side panels for comfort, boot lace tabs, lower back protective padding, adjustable suspenders, adjustable leg gaiters.

**SAFETY:** 3M<sup>®†</sup> reflective ellipse patches.

**2869069** | Pink | Women's S-2XL 199.99 us

**2869070** | White | Women's S-2XL 199.99 us

## D. INSULATOR BIB

If you're looking for a bib that's insulated, waterproof and has incredible value, slip into these. The comfort is just right and so is the price.

**SHELL:** 330 denier Taslan.<sup>®†</sup>

**WATERPROOF BREATHABLE:** 1000mm polyurethane.

**INSULATION:** 200g Thermolite<sup>®†</sup> Plus.

**POCKETS:** Two hand warmer pockets.

**ADDITIONAL FEATURES:** Critically seam-sealed, adjustable waist and leg gaiters, drop seat design.

**SAFETY:** 3M<sup>®†</sup> reflective ellipse patches.

**2856213** | Black | Women's S-2XL 119.99 us

Includes Talls (M-L), Petites (M-XL)

### ADULT SIZE CODES FOR ORDERING

See pg. 31 for size & fit charts.

Don't forget to add the two-digit size code at the end of the part number!  
See size availability in the item description, not all sizes available in all styles.

XS = 01	M = 03	M - Tall = 05	L - Short = 07	XL = 09	XL Tall = 11	2XL Tall = 13
S = 02	M - Short = 04	L = 06	L - Tall = 08	XL Short = 10	2XL = 12	3XL = 14



# YOUTH OUTERWEAR

**PURE COMFORT FOR YOUNG RIDERS.** Forget department store apparel. Pure Polaris outerwear is designed to keep young riders warm and dry, so they'll have more fun whether they're squeezing the throttle or just playing outside.



### E. YOUTH RACE JACKET

Fully insulated and waterproof with sponsor logos. This is the ultimate youth race jacket.

**SHELL:** 330 denier Taslan.<sup>®†</sup>

**WATERPROOF BREATHABLE:** 600mm polyurethane.

**INSULATION:** 270g Polyfil<sup>®†</sup> in body, 200g in sleeves.

**POCKETS:** Two handwarmer exterior pockets.

**ADDITIONAL FEATURES:** Microfleece rollover collar, adjustable wrists, adjustable waist tabs.

**SAFETY:** 3M<sup>®†</sup> reflective ellipse on back.

**2860125** | Black | Youth S-XL 99.99 us

### F. YOUTH SASSY JACKET

Matches mom's Diva Jacket, built for all-day warmth and comfort.

**SHELL:** 420 denier Ripstop nylon/330 denier Taslan.<sup>®†</sup>

**WATERPROOF BREATHABLE:** 600mm polyurethane.

**INSULATION:** 270g Polyfil<sup>®†</sup> in body, 200g in sleeves.

**POCKETS:** Two handwarmer exterior pockets.

**ADDITIONAL FEATURES:** Microfleece rollover collar, adjustable wrists, adjustable shockcord at hem.

**SAFETY:** 3M<sup>®†</sup> reflective tape on shoulders and reflective ellipse on back.

**2860126** | Pink | Youth S-XL 99.99 us

### G. YOUTH RIPPER JACKET

Matches dad's Ripper Jacket, with graphics on front and on sleeve applique.

**SHELL:** 420 denier Ripstop nylon/330 denier Taslan.<sup>®†</sup>

**WATERPROOF BREATHABLE:** 600mm polyurethane.

**INSULATION:** 270g Polyfil<sup>®†</sup> in body, 200g in sleeves.

**POCKETS:** Two handwarmer exterior pockets.

**ADDITIONAL FEATURES:** Microfleece rollover collar, adjustable wrists, adjustable waist tabs.

**SAFETY:** 3M<sup>®†</sup> reflective ellipse on back.

**2860124** | Red | Youth S-XL 99.99 us

### H. YOUTH RIM & RIPPER BIB

The perfect solution for fast-growing kids. These durable, waterproof bibs feature "grow-cuffs" for literally years of winter use.

**SHELL:** 330 denier Taslan.<sup>®†</sup>

**WATERPROOF BREATHABLE:** 600mm polyurethane.

**INSULATION:** 180g Polyfil.<sup>®†</sup>

**POCKETS:** Two handwarmer pockets.

**ADDITIONAL FEATURES:** Full-length leg zippers, adjustable leg gaiters.

**SAFETY:** 3M<sup>®†</sup> reflective ellipse patches.

**2856202** | Black | Rim, Youth, S-XL 79.99 us

**2869078** | Red | Ripper, Youth, S-XL 79.99 us

**2869079** | Black | Ripper, Youth, S-XL 79.99 us



RIM BIB

RIPPER BIB

RIPPER BIB

### YOUTH SIZE CODES FOR ORDERING

See pg. 31 for size & fit charts.

Don't forget to add the two-digit size code at the end of the part number!  
See size availability in the item description, not all sizes available in all styles.

YOUTH SIZES:	S=02	M=03	L=06	XL=09					
--------------	------	------	------	-------	--	--	--	--	--

MEN'S JACKETS

WOMEN'S JACKETS

MEN'S BIBS & PANTS

WOMEN'S BIBS & PANTS

YOUTH JACKETS & BIBS

HELMETS & GOGGLES

GLOVES

MEN'S CASUAL

WOMEN'S CASUAL

BALL CAPS & HEADWEAR

BOOTS

BAGS & FIT CHARTS

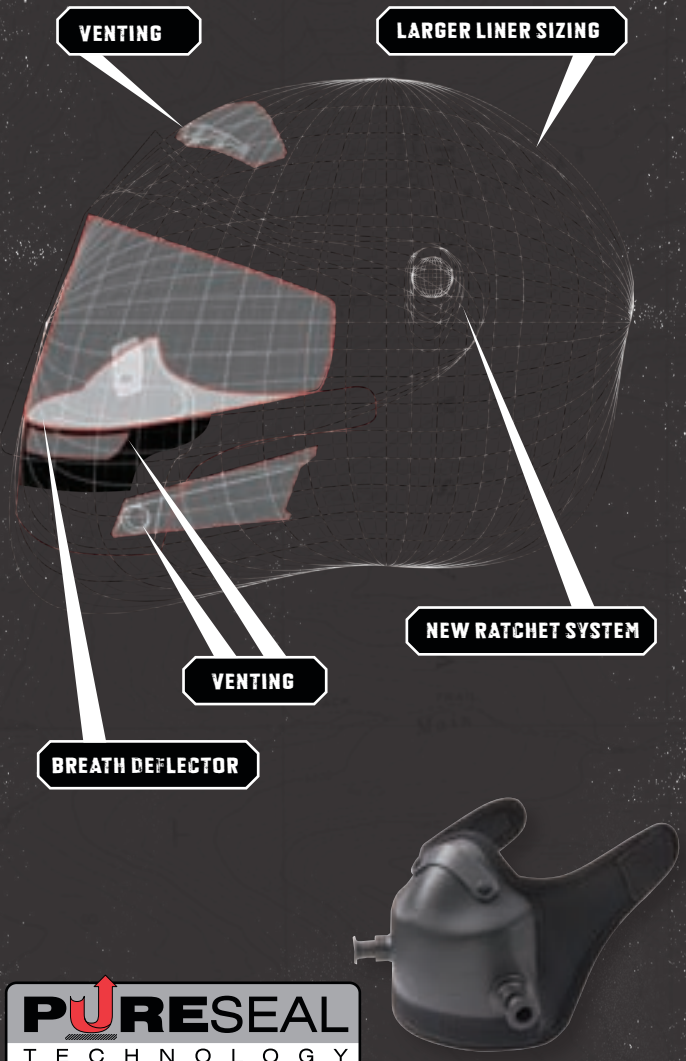
# HELMETS FULL-FACE

**PURE QUALITY, COMFORT AND STYLE.** Open-face, full-face, the latest anti-fog technology... it's all here. Six pages of quality Pure Polaris helmets, helmet accessories and goggles so you can find just what you're looking for in style, features and price.



**PURESEAL TECHNOLOGY WORKS BY REDIRECTING YOUR BREATH OUTSIDE THE HELMET. THE HELMET SHIELD STAYS CLEAR OF FOG, PROVIDING THE RIDER WITH MAXIMUM VISIBILITY.**

The colder it gets, the quicker your helmet fogs up. You can either open your face shield and risk frostbite, stop every mile or so to wipe off the fog... or buy a Pure Polaris helmet with PureSeal™ technology. Both the AF-1.5 and Cyclone helmets feature strategic venting, a closed-cell foam for a positive seal, and telescoping breath exhaust ports. Breath is deflected down and out. That keeps your face shield clear for maximum visibility and rider comfort.



**PURESEAL**  
TECHNOLOGY

We looked at more than 15 snowmobile helmets on the market. Our engineers tested them under controlled temperatures and wind speeds, comparing their advantages and flaws. Then we added human factors to those tests, such as a person's size, fitness level, gender and riding style. We used the collected data to build a variety of prototypes with the best anti-fog characteristics. The result is the AF-1.5 and Cyclone, the most technologically advanced, anti-fog helmets in Polaris history. Try to fog these helmets, we dare you.



**A. AF-1.5 HELMET**



On long rides and in cold temperatures, helmet fog is enemy number one. That's why we built the AF-1.5, featuring PureSeal™ technology. It's the most technologically advanced, anti-fog helmet in Polaris history. It works and it's affordable.

- SHELL:** Alloy polycarbonate shell.
- SHIELD:** Anti-fog and anti-scratch coatings.
- VENTS:** Dual venturi exhaust vents and adjustable crown and chin vents, rear exhaust vents.
- BREATH DEFLECTOR:** PureSeal™ Technology prevents fogging.
- INTERIOR:** Removable, washable Nylex™+ lining.
- SAFETY:** Snell M2005/DOT approved.

<b>2869118</b>	Red   S-3XL	169.99 us
<b>2869119</b>	Silver   S-3XL	169.99 us
<b>2869121</b>	Pink   S-3XL	169.99 us
<b>2869122</b>	Solid Black   S-3XL	164.99 us
<b>2869224</b>	Clear replacement shield	44.99 us
<b>2869226</b>	Tinted shield	49.99 us
<b>2869225</b>	Electric Shield	99.99 us
<b>2852453</b>	Electric cord replacement	39.99 us
<b>2867127</b>	Breath deflector	19.99 us
<b>2867496</b>	Breath deflector Tubes	4.99 us
<b>2869504</b>	Ratchet kit/side plate	9.99 us
<b>2875136</b>	12v Outlet, IQ Chassis	39.99 us
<b>2877895</b>	12v Outlet, Rush Chassis	39.99 us



MEN'S JACKETS

WOMEN'S JACKETS

MEN'S BIBS & PANTS

WOMEN'S BIBS & PANTS

YOUTH JACKETS & BIBS

**HELMETS & GOGGLES**

GLOVES

MEN'S CASUAL

WOMEN'S CASUAL

BALL CAPS & HEADWEAR

BOOTS

BAGS & FIT CHARTS

# HELMETS FULL-FACE & MOTO



## A. CYCLONE HELMET

A lightweight, high-performance, helmet featuring our exclusive anti-fog, PureSeal™ Technology. It uses a custom-fit breath deflector to capture exhaled air and exhaust it through dual venturi vents.

**SHELL:** Fiberglass, strong and lightweight.

**SHIELD:** Anti-fog and anti-scratch coatings. Quick-release ratchet system. Optional electric shield (2868215).

**VENTS:** Dual venturi exhaust vents, chin vents and elongated crown vents.

**BREATH DEFLECTOR:** PureSeal™ Technology prevents fogging.

**INTERIOR:** Removable, washable, moisture-wicking liner.

**VALANCE:** Removable, semi-rigid valance.

**SAFETY:** Snell M2005/DOT through 2XL/DOT approved through 3XL.



<b>2860133</b>	Red   S-3XL	229.99 us
<b>2860134</b>	Silver   S-3XL	229.99 us
<b>2868064</b>	Black   S-3XL	219.99 us
<b>2868211</b>	Tinted shield	49.99 us
<b>2868212</b>	Clear replacement shield	44.99 us
<b>2868213</b>	Breath deflector	19.99 us
<b>2868214</b>	Ratchet kit	9.99 us
<b>2868215</b>	Electric shield	99.99 us
<b>2868216</b>	Valance replacement	4.99 us
<b>2868217</b>	Electric cord replacement	19.99 us
<b>2875136</b>	12v Outlet, IQ Chassis – non 600	39.99 us
<b>2877895</b>	12v Outlet, Rush Chassis	39.99 us





**B. DEMON HELMET**

The lightest helmet in our lineup, with all the "must-have" moto features.

**SHELL:** Lightweight, composite fiberglass with dual density EPS liner.

**VENTS:** Aerodynamic, vented cover, flow-through ventilation system.

**INTERIOR:** Fully removable, washable Dupont Coolmax<sup>®</sup> liner.

**ADDITIONAL FEATURE:** Adjustable visor, goggle holder compatible with most goggle brands, adjustable chin strap, removable molded roost deflector, integrated nose guard.

**SAFETY:** Snell M2005/DOT approved.

2869323	Red Matte	S-3XL	199.99 us
2869324	Silver Matte	S-3XL	199.99 us
2869479	Replacement visor	Red	19.99 us
2869480	Replacement visor	Silver	19.99 us
2869484	Visor screw kit		9.99 us

**C. ASSAULT HELMET**

The helmet of choice for our Assault Team Riders. Lightweight construction and skull graphics make it comfortable and one of the hottest lids on the snow.

**SHELL:** Lightweight, alloy polycarbonate.

**VENTS:** Mouth air intake vent, forehead and rear vents.

**SNOW MASK:** Optional (2853472).

**INTERIOR:** Removable, washable Duralux liner. Integrated nose guard.

**ADDITIONAL FEATURE:** Aerodynamic visor, reduces glare.

**SAFETY:** Snell M2005/DOT approved.

2869100	Assault Red Matte	S-3XL	149.99 us
2869365	Assault Gray Matte	S-3XL	149.99 us
2860140	Replacement visor	Red Assault	19.99 us
2869501	Replacement visor	Gray Assault	19.99 us
2853472	Universal Snow Mask		19.99 us



MEN'S JACQUETS

WOMEN'S JACQUETS

MEN'S BIBS & PANTS

WOMEN'S BIBS & PANTS

YOUTH JACQUETS & BIBS

HELMETS & GOGGLES

GLOVES

MEN'S CASUAL

WOMEN'S CASUAL

BALL CAPS & HEADWEAR

BOOTS

BAGS & FIT CHARTS

# HELMETS **MOTO**

## MOMENTUM HELMET



## DRAGON HELMET



## DEFENDER HELMET



### A. MOMENTUM HELMET

This lightweight helmet is perfect for riding trails on your sled or ATV. No wonder this is one of our top-sellers.

**SHELL:** Lightweight, alloy polycarbonate.

**VENTS:** Mouth air intake vent, forehead and rear vents.

**SNOW MASK:** Optional (2853472).

**INTERIOR:** Removable, washable Duralux liner. Integrated nose guard.

**ADDITIONAL FEATURE:** Aerodynamic visor, reduces glare.

**SAFETY:** Snell M2005/DOT approved.

<b>2868075</b>	Red Matte   S-3XL	129.99 us
<b>2868076</b>	Blue Matte   S-3XL	129.99 us
<b>2868077</b>	Pink Matte   S-3XL	129.99 us
<b>2868078</b>	Black Matte   S-3XL	124.99 us
<b>2868223</b>	Replacement visor   Red Matte	19.99 us
<b>2868224</b>	Replacement visor   Blue Matte	19.99 us
<b>2868225</b>	Replacement visor   Pink Matte	19.99 us
<b>2868228</b>	Replacement visor   Black Matte	19.99 us
<b>2852470</b>	Visor screw kit	2.99 us

### B. DRAGON HELMET

Similar to the Momentum helmet, with the addition of hot dragon graphics.

<b>2868080</b>	White Matte   S-3XL	149.99 us
<b>2868079</b>	Factory Race Orange Matte   S-3XL	149.99 us
<b>2868227</b>	Replacement visor   White	19.99 us
<b>2868226</b>	Replacement visor   Orange	19.99 us
<b>2852470</b>	Visor screw kit	2.99 us

### C. DEFENDER HELMET

Features styling and details for snowmobiling and ATV riding, at an affordable price.

**SHELL:** Lightweight, alloy polycarbonate.

**VENTS:** Mouth air intake vent.

**SNOW MASK:** Optional (2853472).

**INTERIOR:** Removable, washable Duralux liner.

**ADDITIONAL FEATURE:** Aerodynamic visor, reduces glare.

**SAFETY:** DOT approved.

<b>2869458</b>	Special Edition Matte   S-3XL	129.99 us
<b>2868082</b>	Red   S-3XL	99.99 us
<b>2868083</b>	Blue   S-3XL	99.99 us
<b>2868084</b>	Silver   S-3XL	99.99 us
<b>2868085</b>	Black   S-3XL	94.99 us
<b>2869503</b>	Replacement visor   Special Edition Matte	19.99 us
<b>2868229</b>	Replacement visor   Red	19.99 us
<b>2868230</b>	Replacement visor   Blue	19.99 us
<b>2868231</b>	Replacement visor   Silver	19.99 us
<b>2868233</b>	Replacement visor   Black	19.99 us
<b>2852470</b>	Visor screw kit	2.99 us

**VSN GOGGLE**



**YOUTH GOGGLE**

**D. VSN DUAL LENS GOGGLE**

- » Articulating Outrigger Positioning System for superior helmet compatibility
- » In-lens Tear Offs posts
- » Extended F.A.T. 2-layer face foam to seal out cold spots
- » Dual pane, yellow anti-fog Lexan®+ lens
- » Ultra-wide silicone backed strap



2869102	VSN   Red	49.99 us
2869103	VSN   Black	49.99 us
2869104	VSN   Silver	49.99 us
2869105	VSN Dual Replacement Lenses   Clear	14.99 us
2869106	VSN Dual Replacement Lenses   Amber	14.99 us
2869107	VSN Dual Replacement Lenses   Blue	14.99 us
2869223	VSN Snow 1/4 Mask	13.99 us
2869222	VSN Snow Mask w/Fleece backed extension	7.99 us

**E. YOUTH GOGGLE**

- » Hypoallergenic face foam
- » Clear Lexan®+ lens

2869278	Youth goggle	25.99 us
---------	--------------	----------

**F. YOUTH FULL FACE**

An outstanding youth helmet, fully featured for warmth, comfort and safety. Now featuring a new ratchet system for easy, no-tool shield removal.

**SHELL:** Injection-molded thermoplastic ABS shell.

**VENTS:** Chin, forehead, side and rear exhaust vents.

**INTERIOR:** Removable, washable liner.

**SAFETY:** DOT approved.

**ADDITIONAL FEATURES:** Quick-release shield, removable breath deflector.

2860136	Red   Youth S-L	109.99 us
2860135	Silver   Youth S-L	109.99 us
2869521	Clear replacement shield	19.99 us



**ADULT HELMET SIZE CONVERSION TABLE**

	SIZE	HAT SIZE	INCHES	METRIC	SIZE CODE
	XS	6¾	21¼	54	01
	S	6½ - 7	21½ - 22	55 - 56	02
	M	7¼ - 7½	22¾ - 23¼	57 - 58	03
	L	7¾ - 7½	23¾ - 23¾	59 - 60	06
	XL	7¾ - 7¾	24 - 24¾	61 - 62	09
	2XL	7¾ - 8	24¾ - 25½	63 - 64	12
	3XL	8	25 - 26	65	14

**YOUTH HELMET SIZE CONVERSION TABLE**

	SIZE	CIRCUMFERENCE	METRIC	SIZE CODE
	Adj.	Fits S-L	51 - 54	00
	S	20¾	51	02
	M	20¾	53	03
	L	21¾	55	06

MEN'S JACQUETS

WOMEN'S JACQUETS

MEN'S BIBS & PANTS

WOMEN'S BIBS & PANTS

YOUTH JACQUETS & BIBS

HELMETS & GOGGLES

GLOVES

MEN'S CASUAL

WOMEN'S CASUAL

BALL CAPS & HEADWEAR

BOOTS

BAGS & FIT CHARTS

# GLOVES

**A FISTFUL OF QUALITY.** If it says Polaris on the wrist, you know it's going to keep your hands warm and dry. Pure Polaris gloves are waterproof and breathable, in a wide variety of styles to precisely match your performance level.



## A. PRIMO GLOVE

INSULATED

**SHELL:** 420 denier Oxford nylon/660 denier Taslan.<sup>®†</sup>

**WATERPROOF BREATHABLE:** eVent<sup>®†</sup> technology.

**INSULATION:** Thermolite,<sup>®†</sup> 340g on back of hand, 125g on palm.

**ADDITIONAL FEATURES:** Leather-reinforced palm, leather-wrapped fingers, drawcord gauntlet, soft goggle wipe on thumb.

2869089 | Red | S-2XL 79.99 us

2869088 | Black | S-2XL 79.99 us



## B. APPROACH GLOVE

UN-INSULATED

**SHELL:** 660 denier Taslan.<sup>®†</sup>

**WATERPROOF BREATHABLE:** eVent<sup>®†</sup> fabric.

**INSULATION:** Lightly insulated on back of hand.

**ADDITIONAL FEATURES:** Kevlar<sup>®†</sup> palm, neoprene cuff, stretch Lycra<sup>®†</sup> fabric on fingers.

2860131 | Black | S-2XL 69.99 us



## C. BIG HORN GLOVE

UN-INSULATED

**SHELL:** 3 layer soft shell material

**WATERPROOF BREATHABLE:** Windproof and breathable

**INSULATION:** None

**ADDITIONAL FEATURES:** Clarino<sup>®†</sup> palm and adjustable wrist closure.

2860132 | Black | S-2XL 49.99 us



## D. CRANK GLOVE

INSULATED

**SHELL:** 420 denier Oxford nylon/660 denier Taslan.<sup>®†</sup>

**WATERPROOF BREATHABLE:** Hipora<sup>®†</sup> insert.

**INSULATION:** Thermolite,<sup>®†</sup> 340g on back of hand, 125g on palm.

**ADDITIONAL FEATURES:** Pre-curved fingers, leather-reinforced palm, drawcord gauntlet, goggle wipe on index finger, extra padding on outside of hand, leather-wrapped fingers.

**SAFETY:** Reflective dobby bumpers on knuckles.

2868053 | Red | S-2XL 54.99 us

2868052 | Black | S-2XL 54.99 us

### ADULT SIZE CODES FOR ORDERING

See pg. 31 for size & fit charts.

Don't forget to add the two-digit size code at the end of the part number!  
See size availability in the item description, not all sizes available in all styles.

XS = 01	M = 03	M - Tall = 05	L - Short = 07	XL = 09	XL Tall = 11	2XL Tall = 13
S = 02	M - Short = 04	L = 06	L - Tall = 08	XL Short = 10	2XL = 12	3XL = 14



MEN'S JACKETS

WOMEN'S JACKETS

MEN'S BIBS & PANTS

WOMEN'S BIBS & PANTS

YOUTH JACKETS & BIBS

HELMETS & GOGGLES

GLOVES

MEN'S CASUAL

WOMEN'S CASUAL

BALL CAPS & HEADWEAR

BOOTS

BAGS & FIT CHARTS



**E. WOMEN'S POWDER GLOVE**

INSULATED

**SHELL:** 420 denier Oxford nylon shell/660 denier Taslan,<sup>®†</sup> Chamude on palm side.  
**WATERPROOF BREATHABLE:** Waterproof breathable.  
**INSULATION:** Thermolite<sup>®†</sup> 275g on back of hand, 125g on palm.  
**ADDITIONAL FEATURES:** Pre-curved fingers, adjustable Velcro<sup>®†</sup> closure at wrist on palm side, goggle/shield wiper on left thumb.

2869092 | Black | S-XL

39.99 us



**F. DEFENSE LEATHER GLOVE**

INSULATED

**SHELL:** Cowhide leather.  
**WATERPROOF BREATHABLE:** Hipora<sup>®†</sup> waterproof.  
**INSULATION:** Thermolite<sup>®†</sup> Plus insulation, 200g back of hand, 140g on palm.  
**ADDITIONAL FEATURES:** Reinforced leather palms, adjustable wrist, drawcord gauntlet, reflecti piping.

2856501 | Black | S-2XL

79.99 us



**G. SHORT LEATHER GLOVE**

INSULATED

**SHELL:** Premium top grain leather  
**INSULATION:** Thermolite<sup>®†</sup> insulation, 275g back of hand, 125g on palm.  
**ADDITIONAL FEATURES:** Reinforced leather palm, elastic cinch at wrist and a short gauntlet for reduced cuff bunching.

2869087 | Black | S-2XL

59.99 us



Adult Glove

Youth Mitten

**H. TOASTER GLOVE & MITTEN**

INSULATED

**SHELL:** 420 denier Oxford nylon/660 denier Taslan.<sup>®†</sup>  
**WATERPROOF BREATHABLE:** Hipora<sup>®†</sup> insert.  
**INSULATION:** Thermolite,<sup>®†</sup> 340g on back of hand, 125g on palm.  
**ADDITIONAL FEATURES:** Pre-curved fingers, leather-reinforced palm, drawcord gauntlet, goggle wipe on index finger, extra padding on outside of hand, leather-wrapped fingers.  
**SAFETY:** Reflective dobbie bumpers on knuckles.

2869090 | Black | Adult, Glove, S-2XL

39.99 us

2869097 | Black | Youth, Glove, S-XL

24.99 us

2869098 | Black | Youth, Mitten, S-XL

24.99 us



**I. 3-LAYER FLEECE GLOVE**

UN-INSULATED

**SHELL:** 3-layer fleece.  
**WATERPROOF BREATHABLE:** Outer membrane protects against wind.  
**ADDITIONAL FEATURES:** A medium weight versatile glove, great for loading the trailer and driving to the store.

2869227 | Black | S-2XL

29.99 us



**J. RACING GLOVE**

UN-INSULATED

**SHELL:** Stretch nylon  
**PALM:** Clarino<sup>®†</sup> palm material  
**INSULATION:** None  
**ADDITIONAL FEATURES:** Reinforced palm, precurved fingers.  
**SAFETY:** CE approved

2869247 | Red | S-3XL

34.99 us

2869246 | Black | S-3XL

34.99 us

2869248 | Blue | S-3XL

34.99 us

2869250 | Pink | XS-M

34.99 us



**K. CARBON KNUCKLE GLOVE**

UN-INSULATED

**SHELL:** Neoprene  
**PALM:** Clarino<sup>®†</sup> palm material  
**INSULATION:** None  
**ADDITIONAL FEATURES:** Molded carbon knuckle, reinforced palm, Kevlar<sup>®†</sup> reinforcements in high-wear areas. Molded vents for superior breathability. Velcro<sup>®†</sup> wrist closure.  
**SAFETY:** CE approved

2869254 | Black | S-3XL

39.99 us

# MEN'S CASUAL

**POLARIS HAS YOU COVERED YEAR-ROUND.** Jerseys, Tees, shirts and hoodies. Our full line of men's casual wear has you covered during all four seasons, so you can show your Polaris pride year-round. Mix and match them to form just the right combination for trail riding, race watching, ice fishing, bowling, you name it.



Vintage Logo Pit Shirt



Two-Tone Racing Pit Shirt

Charcoal Pit Shirt

Black Pinstripe Pit Shirt

## A. POLARIS MECHANIC'S SHIRT

» 65% Polyester, 35% Cotton

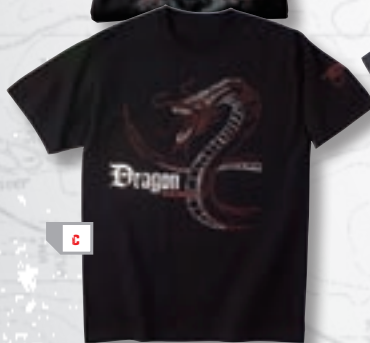
2860052	Vintage Logo	M-3XL	69.99 us
2869293	Two-Tone Racing Pit Shirt	S-3XL	54.99 us
2869294	Charcoal Pit Shirt	S-3XL	49.99 us
2869018	Black Pinstripe	S-3XL	69.99 us



B



D



C



E

## B. DRAGON TEE 100% Cotton

2869019 | Black | S-2XL 19.99 us

## D. POLARIS RACING TEE 100% Cotton

2869432 | Gray | S-2XL 19.99 us

## C. WRAP DRAGON TEE 100% Cotton

2860004 | Black | S-2XL 19.99 us

## E. GRAFFITI TEE 100% Cotton

2860063 | Gray | M-2XL 19.99 us

## F. PERFORMANCE SHIRT 100% Polyester

2860056	White	M-2XL	39.99 us
2860055	Black	M-2XL	39.99 us

## G. HOLESOT JERSEY 100% Polyester

2869262	Gray	S-3XL	59.99 us
2869263	Red	S-3XL	59.99 us



F



G



**H. POLARIS RACING WING HOODIE** 80% Cotton / 20% Poly  
**2860051** | Black | M-2XL 69.99 us

**I. POLARIS CREW RACING SWEATSHIRT** 80% Cotton / 20% Poly  
**2860005** | Black | S-2XL 49.99 us

**J. ZIP DRAGON HOODIE** 80% Cotton / 20% Poly  
**2860006** | Red | S-2XL 69.99 us

**K. POLARIS ICON HOODIE** 100% Cotton Exterior/ Poly Interior  
**2860058** | Brown | M-2XL 69.99 us

**L. POLARIS '54 HOODIE** 80% Cotton / 20% Poly  
**2860059** | Green | M-2XL 54.99 us



**M. RETRO LOGO SHOP JACKET**  
 » 65% Polyester, 35% Cotton and lightly insulated  
**2869135** | Black, Vintage Logo | M-3XL 99.99 us



**D. THERMAL SHIRT** 100% Cotton  
**2869137** | Black | M-2XL 39.99 us

**P. POLARIS DRAGON L/S TEE** 100% Cotton  
**2869020** | Charcoal | S-2XL 29.99 us

**R. DRAGON SCRIPT THERMAL** 100% Cotton  
**2869138** | Black | M-2XL 34.99 us



**R. DRAGON SCRIPT THERMAL** 100% Cotton  
**2869138** | Black | M-2XL 34.99 us

**S. POLARIS '54 L/S TEE** 100% Cotton  
**2860062** | Red | M-2XL 29.99 us

**T. FEEL THE RUSH L/S TEE** 100% Cotton  
**2860054** | Black | M-2XL 29.99 us



**N. TWILL SHIRT** 100% Cotton  
**2869127** | Black | S-2XL 39.99 us  
**2869128** | White | S-2XL 39.99 us

**Q. POLARIS BLOCK TEE** 100% Cotton  
**2869434** | Black | S-2XL 29.99 us

**T. FEEL THE RUSH L/S TEE** 100% Cotton  
**2860054** | Black | M-2XL 29.99 us

- MEN'S JACKETS
- WOMEN'S JACKETS
- MEN'S BIBS & PANTS
- WOMEN'S BIBS & PANTS
- YOUTH JACKETS & BIBS
- HELMETS & GOGGLES
- GLOVES
- MEN'S CASUAL**
- WOMEN'S CASUAL
- BALL CAPS & HEADWEAR
- BOOTS
- BAGS & FIT CHARTS

# WOMEN'S CASUAL

**SHOW YOUR POLARIS PRIDE.** Polaris apparel helps you look and feel your best on and off the trail. Our full line of women's casual apparel includes 100% cotton, cotton blends and polyester, with many items available in a wide assortment of sizes and colors.

**A. SHOOTING STAR THERMAL** 100% Cotton

2869209 | White | S-2XL 39.99 us

**B. MOTIVATED L/S TEE** 100% Cotton

2860077 | Teal | S-XL 29.99 us

**C. BLOSSOM ZIP HOODIE** 100% Cotton

2860073 | Blue | S-XL 34.99 us

**D. POLARIS MIDNIGHT ELLIPSE L/S TEE** 100% Cotton

2860078 | Black | S-XL 29.99 us

**E. MOTIVATED L/S TEE** 100% Cotton

2860076 | Black | S-XL 29.99 us

**F. BLOSSOM ZIP HOODIE** 100% Cotton

2860074 | Pink | S-XL 34.99 us



Back Lettering Detail

**G. DRAGON DIVA HOODIE** 100% Cotton

2860064 | Black | S-2XL 54.99 us

**H. CHIANTI FLORAL HOODIE** 100% Cotton

2860068 | Pink | S-XL 59.99 us

**I. ALLISON HOODIE** 100% Polyester

2860067 | Blue | S-XL 49.99 us

**J. DRAGON DIVA HOODIE** 100% Cotton

2860007 | Gray | S-2XL 54.99 us

**K. POTPOURRI HOODIE & SWEATPANTS** 100% Cotton

2860069 | Hoodie, White | S-XL 59.99 us

2860070 | Sweatpants, Black | S-XL 49.99 us

**ADULT SIZE CODES FOR ORDERING**

See pg. 31 for size & fit charts.

Don't forget to add the two-digit size code at the end of the part number!  
See size availability in the item description, not all sizes available in all styles.

XS = 01	M = 03	M - Tall = 05	L - Short = 07	XL = 09	XL Tall = 11	2XL Tall = 13
S = 02	M - Short = 04	L = 06	L - Tall = 08	XL Short = 10	2XL = 12	3XL = 14



L

**L. VINTAGE LOGO MECHANIC'S SHIRT**

» 65% Polyester, 35% Cotton

2860079 | Black | S-2XL 59.99 us



M

**M. WOMEN'S PIT SHIRT**

» 65% Polyester, 35% Cotton

2869111 | Black / Red | S-3XL 64.99 us



N

**N. WOMEN'S RACE MECHANIC SHIRT**

» 65% Polyester, 35% Cotton

2869112 | Black | S-2XL 59.99 us

**O. REACTIVE DIAMONDS TEE 100% Cotton**

2860072 | Black | S-XL 19.99 us

**P. BLOCK RACING TEE 100% Cotton**

2869438 | Pink | S-XL 19.99 us

**Q. MOTIVATED S/S TEE 100% Cotton**

2860075 | White | S-XL 19.99 us



O



P



Q

**R. PERFORMANCE SHIRT 100% Polyester**

2860065 | White | S-XL 39.99 us

2860066 | Black | S-XL 39.99 us

**S. WOMEN'S HOLESHOT JERSEY 100% Polyester**

2869266 | Pink | S-2XL 59.99 us



R

S

MEN'S JACKETS

WOMEN'S JACKETS

MEN'S BIBS & PANTS

WOMEN'S BIBS & PANTS

YOUTH JACKETS & BIBS

HELMETS & GOGGLES

GLOVES

MEN'S CASUAL

WOMEN'S CASUAL

BALL CAPS & HEADWEAR

BOOTS

BAGS & FIT CHARTS

# BALLCAPS & HEADWEAR

**THE SOLUTION TO HELMET HAIR.** You can't have too many caps and beanies. Choose your favorites from this big selection of designs and colors. And stock up on balaclavas so you're ready for those rides in sub-zero temperatures.



**A. TWO-TONE POLARIS RACING CAP**

2869446 | Red/White | OSFA 19.99 us



**B. POLARIS RACING BLACK CAP**

2860010 | Black | OSFA 19.99 us



**C. POLARIS RACING RED CAP**

2860011 | Red | OSFA 19.99 us



**D. POLARIS RACING FLAME CAP**

2860084 | Red | OSFA 19.99 us



**E. POLARIS RACING PINSTRIPE CAP**

2869445 | Black | Fitted 19.99 us



**F. POLARIS RACING TRUCKERS CAP**

2860089 | Red/White | OSFA 19.99 us



**G. HIDDEN ELLIPSE CAP**

2860087 | Black | OSFA 19.99 us



**H. POLARIS REBEL CAP**

2860088 | White | Fitted 19.99 us



**I. POLARIS FLAME RED CAP**

2869169 | Red | OSFA 19.99 us



**J. RMK CAP**

2860086 | Black | OSFA 19.99 us



**K. FLAME SWITCHBACK CAP**

2860085 | Black | OSFA 19.99 us



**L. RUSH CAP**

2860093 | Black | Fitted 19.99 us



**M. POLARIS FLAME BLACK CAP**

2869168 | Black | OSFA 19.99 us



**N. WOMEN'S ALTERNATIVE CAP**

2860091 | Cream | OSFA 19.99 us



**O. WOMEN'S POLARIS RACING CAP**

2860090 | Black | OSFA 19.99 us

DEALERS: Ballcaps and Headwear  
come pre packed 6 per package.  
Note: OSFA = One Size Fits All.

Embroidery Detail



**P. BLACK SIDE HIT BEANIE** 100% Acrylic  
 2860094 | Red / Black | One size fits most 19.99 us

**Q. POLARIS RACING RADAR BEANIE** 100% Acrylic  
 2860095 | Red | One size fits most 19.99 us

**R. POLARIS TRIBAL BEANIE** 100% Acrylic  
 2860097 | Black | One size fits most 19.99 us



**S. CAMO BEANIE** 100% Acrylic  
 2869184 | Snow Camo | One size fits most 19.99 us

**T. DISTRESSED SKULLS BEANIE** 100% Acrylic  
 2869191 | Black | One size fits most 19.99 us

**U. POLARIS RACING BEANIE** 100% Acrylic  
 2869186 | Gray / Black | One size fits most 19.99 us



**V. FULL DRAGON® BEANIE** 100% Acrylic  
 2869187 | Red | One size fits most 19.99 us

**W. DRAGON SCRIPT BEANIE** 100% Acrylic  
 2869188 | Black | One size fits most 19.99 us



**X. DRAGON PRIDE BEANIE** 100% Acrylic  
 2860096 | Gray | One size fits most 19.99 us

**Y. WOMEN'S POLARIS DRAGONHEAD® BEANIE** 100% Acrylic  
 2860098 | Gray / Pink | One size fits most 19.99 us

**Z. WINDBLOC® BALACLAVA** Wind stopping fabric for extreme cold weather.  
 285392702 | Black | S-M 24.99 us  
 285392706 | Black | L-XL 24.99 us

**AA. ULTIMATE BALACLAVA** Premium fabric balaclava for warmth & comfort.  
 2853926 | Black | One size fits all 19.99 us

**BB. STRETCH FLEECE BALACLAVA** The standard in all weather performance.  
 2852977 | Black | One size fits all 15.99 us  
 2859921 | Red | One size fits all 15.99 us

**CC. THERMOLITE® BALACLAVA** A lightweight fabric for comfort and fit.  
 285681101 | Black Thermolite®+ | One size fits all 8.99 us

**DD. NYLON BALACLAVA** An ideal choice for warmer weather protection.  
 2852484 | Black Nylon | One size fits all 5.99 us



- MEN'S JACKETS
- WOMEN'S JACKETS
- MEN'S BIBS & PANTS
- WOMEN'S BIBS & PANTS
- YOUTH JACKETS & BIBS
- HELMETS & GOGGLES
- GLOVES
- MEN'S CASUAL
- WOMEN'S CASUAL
- BALL CAPS & HEADWEAR
- BOOTS
- BAGS & FIT CHARTS

# BOOTS

**NOT YOUR FATHER'S RIDING BOOTS.** Sledhead footwear has come a long ways. With Pure Polaris, you can choose from leather or nylon, tall or short, molded or removable liner, laces or straps. All Polaris boots feature quality construction to ensure a perfect fit and all-day warmth and comfort.

## A. RECON BOOT

**UPPER:** Carbon textured upper with KingTex waterproof breathable membrane.

**SOLE:** Molded rubber toe and high traction rubber sole.

**INSULATION:** Removable Altra-Tech™ Sport Liner with Thermolite®+ insulation.

**COMFORT RATING:** -70° F.

**ADDITIONAL FEATURES:** Gel heel cushion insole, high frequency ankle splice, injected moulded rear protection.

2869116 | Black / Red | Men's 8-13 | 149.99 us



## B. SIDHILL BOOT

**UPPER:** Leather.

**SOLE:** High-traction rubber.

**INSULATION:** Lightweight thermo-molded liner.

**COMFORT RATING:** -70° F.

**ADDITIONAL FEATURES:** Speed-lace system, 3M™ reflective tape.

2867059 | Black / Gray | Men's 8-13 | 149.99 us



## C. RAGE BOOT

**UPPER:** Ballistic nylon with Diamondtex overlay.

**MIDSOLE:** EVA Shock absorbing midsole.

**SOLE:** High-traction rubber.

**INSULATION:** 200g Thermolite®+.

**COMFORT RATING:** -40° F.

**ADDITIONAL FEATURES:** Speed-lace system, all-weather protection, lateral ankle & heel support, and reflective piping.

2868205 | Black / Gray | Men's 6-13 | 129.99 us

## D. XTREME III BOOT

**UPPER:** Leather.

**SOLE:** High-traction rubber.

**INSULATION:** 990g Thinsulate™+.

**COMFORT RATING:** -70° F.

**ADDITIONAL FEATURES:** AquaPlus™ waterproof breathable, built-in handles for easy on/off.

2869115 | Black | Men's 7-14 | 129.99 us



## E. BASE CAMP PACK BOOT

**UPPER:** Leather.

**SOLE:** Thermoplastic rubber.

**INSULATION:** Removable 200vg Thermolite®+ liner.

**COMFORT RATING:** -40° F.

**ADDITIONAL FEATURES:** Speed-lace system.

2853603 | Black | Men's 7-14 | 44.99 us



MEN'S JACKET'S

WOMEN'S JACKET'S

MEN'S BIBS &amp; PANTS

WOMEN'S BIBS &amp; PANTS

YOUTH JACKET'S &amp; BIBS

HELMETS &amp; GOGGLES

GLOVES

MEN'S CASUAL

WOMEN'S CASUAL

BALL CAPS &amp; HEADWEAR

**BOOTS**
**BAGS & FIT CHARTS**

# BAGS

**DITCH THE OLD BAG.** Polaris invented the snowmobile. Ogio® revolutionized bag design for outdoor action sports. Together, we've built the best bags for serious sledheads.


**POLARIS BAGS**

<b>F. 2860137</b>	Polaris/Ogio®+ 9800 Roller Bag   34" H x 14" W x 17" D   White / Black	199.99 us
<b>G. 2860109</b>	Polaris/Ogio®+ Universal Backpack   19" H x 13" W x 8" D   White / Black	59.99 us
<b>H. 2868459</b>	Polaris/Ogio®+ Big Wheel Duffel bag   12" H x 12" W x 28" D   Red / Black	79.99 us
<b>I. 2869229</b>	Polaris Helmet Bag	29.99 us

**MEN'S JACKET & BIB SIZING**

SIZE	CHEST	SLEEVE	WAIST	INSEAM
S	34-36	33	28-30	33
M	38-40	34	32-34	33½
M Tall	38-40	35½	32-34	35½
L	42-44	35	36-38	34
L Tall	42-48	36½	36-38	36
XL	46-48	36	40-42	34½
XL Tall	46-48	37½	40-42	36½
2XL	50-52	37	44-46	35
XX-L Tall	50-52	38½	44-46	37
XXX-L	50-52	37½	48-50	35½

Men's regular 5'8" to 6'0," tall 6'0" to 6'4"  
Tall is 2" longer and shorts are 2" shorter than standard size.

**WOMEN'S JACKET & BIB SIZING**

SIZE	CHEST	SLEEVE	WAIST	INSEAM
S	32-34	34½-36½	24-26	30
M	34-36½	36½-39	26-28½	31
L	37-39½	39½-42	29-31½	31½
XL	40½-43½	43-46	32½-35½	32
2XL	44-47½	47½-50	36-39½	32

Women's regular 5'4" to 5'7," tall 5'8" to 5'11," petite 5'2" to 5'5"  
Tall is 2" longer and shorts are 2" shorter than standard size.

**BOOT SIZING CHART**

	MEN'S							
CODE	07	08	09	10	11	12	13	14
SIZE	7	8	9	10	11	12	13	14

\*Order one size larger than shoe size.

**YOUTH JACKET & BIB SIZING**

SIZE	CHEST	WAIST	HEIGHT	HIP
S - 6/8	23-26	23-25	45-52	22-25
M - 10/12	27-29	26-27	55-59	26-28
L - 14/16	31-33	28-29	62-64	30-31½
XL - 18	34	30	66	33



2010» APPAREL &

# ACCESSORIES



## MAKE IT YOURS

### STORAGE

Some riders need more storage than others. That's why we build so many different bags. Mix and match them to your exact needs. They attach quick and easy in front of you, behind the windshield, on the tank or handlebars, or behind you, under, in back of or on the side of your sled's seat. All Pure Polaris® bags are roomy, rugged and built to fit your Polaris sled perfectly.

### CUSTOMIZATION

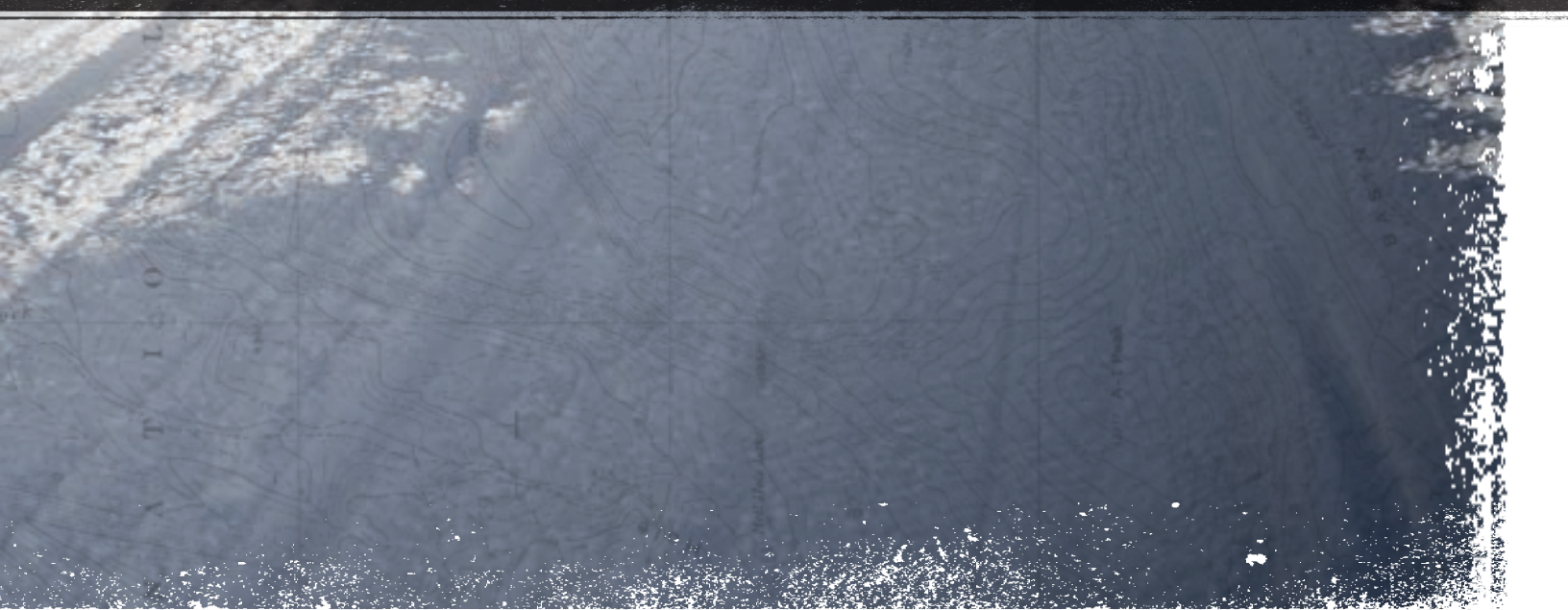
Customizing your sled makes it one-of-a-kind. You'll never have to pull up to a stop sign or walk out to the parking lot of your favorite restaurant and see another sled just like yours. And at Pure Polaris® we make customizing easy. Make a list of your favorite accessories in this catalog or go online to [www.polarisindustries.com/accessoriesled](http://www.polarisindustries.com/accessoriesled), build your dream sled, print it out and bring it to your favorite dealer.

### PERFORMANCE

More power, more traction, more wind protection, more storage. Pure Polaris® accessories help you dial up the performance of your sled, then keep it looking and running its very best. We've teamed up with the best names in the industry, including Walker Evans®,† Woody's®,† Starting Line Products®† and VForce®† Air shocks to reeds, studs to silencers, grease guns to premium oil. It's all here, ready to help give you Terrain Dominating Control.



No matter what Polaris sled you ride, Pure Polaris has everything you need to accessorize it to your exact specs. Choose from hundreds of quality items built to help you customize, upgrade, maintain, protect and trailer your Polaris snowmobile. If it's from Pure Polaris you know it's going to fit, it's going to work and it's going to last.



<b>RUSH ACCESSORIES</b>	<b>PGS. 34-39</b>	<b>HITCHES &amp; ELECTRICAL</b>	<b>PG. 53</b>
<b>COVERS</b>	<b>PGS. 40-41</b>	<b>TRACKS &amp; TRACK CONVERSIONS</b>	<b>PGS. 54-55</b>
<b>BAGS &amp; TOURING</b>	<b>PGS. 42-45</b>	<b>STUDS</b>	<b>PGS. 56-57</b>
<b>DECALS &amp; WINDSHIELDS</b>	<b>PGS. 48-49</b>	<b>SKIS &amp; CARBIDES</b>	<b>PGS. 58-59</b>
<b>COLORLED COMPONENTS</b>	<b>PGS. 10-11</b>	<b>TRAILERS &amp; GARAGE</b>	<b>PGS. 60-61</b>
<b>PERFORMANCE</b>	<b>PGS. 50-51</b>	<b>OILS &amp; LUBRICANTS</b>	<b>PGS. 62-65</b>
<b>SHOCKS</b>	<b>PG. 52</b>		

# RUSH ACCESSORIES

OWNING THE ALL-NEW POLARIS RUSH™ IS JUST THE BEGINNING. With Pure Polaris accessories, you can customize it to your exact terrain-dominating needs. Choose from a variety of windshields, bags, handguards and other accessories built to compliment the unique RUSH design. Whether you're shooting for the ultimate high-performance look or high-mileage ride, Pure Polaris has everything you need. FEEL THE RUSH™.



## PURE-EQUIPPED RUSH **PURE**

### STYLE ACCESSORIES

2877804	Low Chrome Windshield	69.99 us
---------	-----------------------	----------

### PERFORMANCE ACCESSORIES

TBD	Polaris Rush Ski, Each	Late Fall Release
2877793-293	RUSH Skid Plate, Red	79.99 us
2876845	Polaris Handguards, Red, Pair	29.99 us
2877121	VForce® 3 Reed Valve System	259.99 us
2877917	RUSH Bar Riser	39.99 us

### STORAGE ACCESSORIES

2877797	RUSH Underseat Bag	39.99 us
---------	--------------------	----------

**RUSH ACCESSORIES**

COVERS

BAGS &amp; TOURING

DECALS &amp; WINDSHIELDS

COLORED COMPONENTS

PERFORMANCE PARTS

SHOCKS, HITCHES &amp; ELECTRIC ACCESS.

TRACKS &amp; TRACK CONVERSIONS

STUDS

SKIS &amp; CARBIDES

TRAILERS &amp; GARAGE

OILS &amp; LUBRICANTS

**PURE-EQUIPPED RUSH  
PURE**

**STYLE ACCESSORIES**

<b>2877805</b>	Tall Windshield	99.99 us
<b>2877803</b>	RUSH Hood Mount Mirrors, Pair	69.99 us

**PERFORMANCE ACCESSORIES**

<b>2877793-070</b>	RUSH Skid Plate, Black	79.99 us
<b>2877891</b>	RUSH Electric Start	599.99 us
<b>2877895</b>	12v Accessory Outlet	39.99 us

**STORAGE ACCESSORIES**

<b>2877795</b>	RUSH Riser Block Bag	59.99 us
<b>2877800</b>	RUSH Saddle & Trunk Bag	149.99 us

# RUSH ACCESSORIES



## A. SKID PLATE

- » Protects suspension, bulkhead from impact
- » Made of strong 1/4" UHMW plastic
- » Adds color and a customized look
- » Includes all necessary mounting hardware

2877793-293	'10 RUSH   Indy Red	79.99 us
2877793-070	'10 RUSH   Black	79.99 us



## B. POLARIS COLORED HANDGUARDS

- » An alternative to the stock black handguards
- » Use with low windshield
- » Sold in pairs

2876883	Handguard   White, Pair	29.99 us
2876845	Handguard   Red, Pair	29.99 us



## C. BAR RISERS

- » Raises handlebars to match your riding style
- » Machined aluminum
- » Easy to install
- » 125mm Tall

2877917	'10 RUSH	39.99 us
---------	----------	----------



## D. VFORCE<sup>3</sup> REED VALVE SYSTEMS

- » Improved performance and acceleration
- » Increases air flow and engine horsepower
- » Twice the reed tip surface offers superior throttle response
- » Proprietary carbon fiber reed petals

2877121	'10 RUSH	259.99 us
---------	----------	-----------



**E. LOW CHROME WINDSHIELD**

- » 7" tall creates a lower profile
- » Gives your RUSH a custom look
- » 20% thicker than stock windshield
- » Installs with 6 fasteners

2877804 | '10 RUSH 69.99 us



**F. MID WINDSHIELD**

- » 18.5" tall with top lip for added wind protection
- » 20% thicker than stock windshield
- » Installs with 6 fasteners
- » Smoke finish

2877841 | '10 RUSH 89.99 us



**G. TALL WINDSHIELD**

- » 21" tall for ultimate wind protection
- » Hand flares and side deflectors
- » 20% thicker than stock windshield
- » Installs with 6 fasteners
- » Smoke finish

2877805 | '10 RUSH 99.99 us

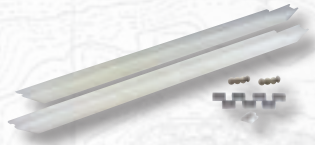


**H. WOODY'S GRIP KIT STUDS**

- » Extra traction on ice and hard-pack snow
- » Optimizes acceleration, control and braking
- » Add safety and performance
- » Quality Woody's® studs and backer plates
- » Includes RUSH Studding Template

2877924 | Grip Kit, 84 Pack | 1.325" 299.99 us

2877925 | Grip Kit, 126 Pack | 1.325" 419.99 us



**I. WEAR STRIP KIT**

- » Protects tunnel when installing studs
- » Includes all necessary hardware

2877818 | '10 RUSH 99.99 us



**J. CARBIDE SKAGS**

- » Available in various lengths allowing you to match studding for balanced performance
- » Precision-built to machine specs by Woody's

2875954 | 3" Carbides, Pair 49.99 us

2875612 | 4" Carbides, Pair 54.99 us

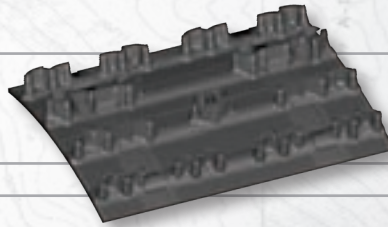
2875613 | 6" Carbides, Pair 64.99 us

2875614 | 8" Carbides, Pair 84.99 us

**K. 1.352" COBRA TRACK**

- » Next generation in high-performance trail tracks
- » Cupped lugs for superior acceleration in soft snow
- » No sacrifice on top end

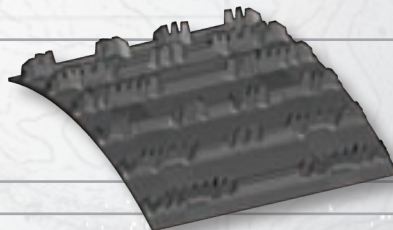
2877748 | '10 RUSH 649.99 us



**L. 1.5" RIPSAW TRACK**

- » A high-performance trail track
- » Highly aggressive with angled profiles
- » Outstanding forward and lateral bite for cornering
- » Superior handling and acceleration in wide variety of conditions

2877747 | '10 RUSH 699.99 us



COVERS

BAGS &  
TOURING

DECALS &  
WINDSHIELDS

COLOR  
COMPONENTS

PERFORMANCE  
PARTS

SHOCKS, HITCHES &  
ELECTRIC ACCESS.

TRACKS & TRACK  
CONVERSIONS

STUDS

SKIS &  
CARBIDES

TRAILERS &  
GARAGE

OILS &  
LUBRICANTS

# RUSH ACCESSORIES



## A. RUSH COTTON COVER

- » Heavy 10 oz. cotton canvas conforms to sled for protection
- » Treated to repel water and UV degradation
- » Spandex panel accommodates all windshield heights
- » Zippered fuel cap area
- » Custom fit for Polaris RUSH model

2877792 | '10 RUSH 179.99 us



## B. RUSH UNDERSEAT BAG

- MATERIAL:** 1000 denier black nylon base, rip-stop accents  
**ATTACHMENT:** Uses friction fit and Velcro<sup>®</sup> to install in seconds  
**CAPACITY:** 180 cu. in. volume  
**ADDITIONAL FEATURES:** Easy access, zipper on both sides

2877797 | '10 RUSH 39.99 us



Front View

Rear View

## C. RUSH RISER BLOCK BAG

- MATERIAL:** 1000 denier black nylon base, rip-stop accents  
**ATTACHMENT:** Straps on in seconds, no drilling  
**CAPACITY:** 180 cu. in. volume  
**ADDITIONAL FEATURES:** Clear vinyl map pocket; Hole for iPod<sup>®</sup>/MP3 headphone cord

2877795 | '10 RUSH 59.99 us





**D. RUSH SADDLE & TRUNK BAG**

**MATERIAL:** 1000 denier black nylon base, rip-stop accents

**ATTACHMENT:** Straps on in seconds, no drilling

**CAPACITY:** Trunk features multiple compartments, 625 cu. in., each Saddlebag, 560 cu. in. volume

**ADDITIONAL FEATURES:** Side pockets on trunk bag

2877800 | '10 RUSH 149.99 us



**E. HANDLEBAR MIRRORS**

- » Installs to RUSH handlebars
- » Can be used with stock handlebar pad
- » Sold in pairs

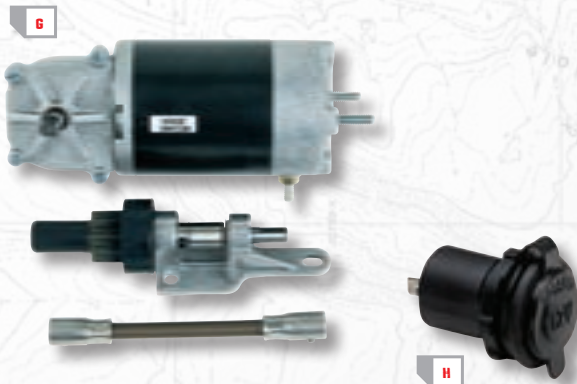
2876297 | '10 RUSH 69.99 us



**F. RUSH HOOD MOUNT MIRRORS**

- » Wide-angle view for good visibility
- » Folding design for use with cover
- » Installs to RUSH hood
- » Custom-designed, integrated mounts
- » Non-fogging glass
- » Sold in pairs

2877803 | '10 RUSH 69.99 us



**G. RUSH ELECTRIC START**

- » The ultimate convenience to add to your sled
- » Great for easy, cold-weather starts
- » Perfectly matched to Polaris specifications
- » Battery sold separately

2877891 | '10 RUSH 599.99 us

4012638 | Battery TBD

**H. RUSH 12 VOLT ACCESSORY**

- » Plug in 12-volt cable
- » Great for GPS or cell phone
- » Includes all hardware

2877895 | '10 RUSH 39.99 us

RUSH ACCESSORIES

COVERS

BAGS & TOURING

DECALS & WINDSHIELDS

COLORED COMPONENTS

PERFORMANCE PARTS

SHOCKS, HITCHES & ELECTRIC ACCESS.

TRACKS & TRACK CONVERSIONS

STUDS

SKIS & CARBIDES

TRAILERS & GARAGE

OILS & LUBRICANTS

# SNOWMOBILE COVERS

**THE BEST SLEDS DESERVE THE BEST COVERS.** Protect your sled from the elements, and from road salt and dirt when trailering. Pure Polaris covers are made of rugged canvas or flexible, yet durable solution dyed polyester. They fit your Polaris sled perfectly and have all the features you need and expect in a quality cover.



Zippered fuel cap access.

Adjustable windshield straps allow you to change windshield height.

One standard graphic package.

Hookless attachment system installs easily without having to get down between side-by-side machines on trailer.

Heavy polyester with sewn-in cotton liner and polyester to protect during trailering and storage.

## A. PREMIUM POLYESTER COVERS

- » Heavy 300 denier polyester with sewn-in cotton liner
- » Ultra resistant to water and UV degradation
- » Hookless attachment strap system
- » Adjustable windshield height
- » Custom fit for Polaris snowmobiles

<b>2875395</b>	'06-10 IQ® 121" / '07-08 LX / '05 Fusion / '06 Classic	199.99 us
<b>2876004</b>	'07-10 RMK / '08-10 Switchback / '10 LX	219.99 us
<b>2875487</b>	'05-06 RMK / '06-07 Switchback	219.99 us
<b>2875396</b>	'06-10 IQ Touring	219.99 us





2876003 - '05-10 IQ RMK

**B. STANDARD CANVAS COVERS**

- » Standard Canvas Covers
- » Heavy 10 oz. cotton canvas
- » Treated to repel water and UV degradation
- » Adjustable windshield height
- » Custom fit for Polaris snowmobiles

Part No.:	Fitment:	Fitment Notes:	
2876003	'05-10 IQ RMK®	144"-166"	189.99 us
2875865	'07-10 IQ 121"	121" & 128"	159.99 us
2875066	'05-06 Fusion®		159.99 us
2875489	'06 IQ Classic Cover		159.99 us
2875488	'05-10 IQ Switchback® / '10 LX	136" & 144"	179.99 us
2876327	'06-10 IQ Touring Cover	Pockets for Mirrors	189.99 us
2877188	'09-10 WideTrak™ IQ Cover	Generic Polaris graphic	189.99 us
2875194	'99-10 WideTrak LX		159.99 us
2875595	'01-09 EDGE® 121"	Generic Polaris graphic	159.99 us
2875594	'03-04 EDGE 121" Pro-X	For short / tall seat	159.99 us
2875592	'02-10 EDGE RMK	136" / 144" / 156" / 159"	189.99 us
2875593	'03-05 EDGE Switchback	(Fits 11"-15" w/s)	159.99 us
2875596	'02-10 EDGE Touring	"Touring" graphics	159.99 us
2876633	'08 600RR, '05-09 IQR	Polaris Racing Decal	159.99 us
2876638	Youth 120		99.99 us
2871913	4 straps & buckles		5.99 us
2871914	2 straps & buckles		2.49 us



2875488 - IQ SWITCHBACK



2876327 - IQ TOURING



2876633 - '08 600RR



2875595 - EDGE

RUSH ACCESSORIES

COVERS

BAGS & TOURING

DECALS & WINDSHIELDS

COLORED COMPONENTS

PERFORMANCE PARTS

SHOCKS, HITCHES & ELECTRIC ACCESS.

TRACKS & TRACK CONVERSIONS

STUDS

SKIS & CARBIDES

TRAILERS & GARAGE

OILS & LUBRICANTS

# BAGS & TOURING

**YOU GOT GEAR, WE GOT BAGS.** Saddlebags, tank bags, tunnel bags — the list goes on and on. Our huge selection of bags lets you customize your sled to your precise storage needs. They're easy to attach and fit your Polaris sled perfectly. We use ballistic nylon for maximum durability and urethane coatings for water resistance and lasting good looks.



136" Version



121" Version

## A. SEMI-RIGID TUNNEL BAGS

**MATERIAL:** 1000 denier black/grey nylon

**ATTACHMENT:** Velcro<sup>®</sup>,\* side-release buckle, no drilling needed

**CAPACITY:** 121" version: 1800 cu. in., 136" version: 2160 cu. in. volume

<b>2877198</b>	121" Tunnel Bag '09-10 (Non-Turbo)	79.99 us
<b>2876333</b>	121" Tunnel Bag '08	79.99 us
<b>2877199</b>	136" Tunnel Bag '09-10 (Non Turbo)	89.99 us
<b>2876564</b>	136" Close-off Bag '08, '09-10 Turbo	89.99 us

## B. UNDERSEAT BAG

**MATERIAL:** 1000 denier black nylon

**ATTACHMENT:** Self-adhesive Velcro<sup>®</sup>†

**CAPACITY:** 500 cu. in. volume

**ADDITIONAL FEATURES:** Reflective side webbing

**2876427** | '08 RMK, '09-10 IQ RMK, IQ 121," Switchback 39.99 us



B



B

## C. SHOVEL BAG

**MATERIAL:** 1680 denier black/grey ballistic nylon

**MATERIAL:** Easy bolt-on installation

**CAPACITY:** 600 cu. in. volume

**ADDITIONAL FEATURES:** Holds shovel head, handle, gear

**2876015** | '07-10 IQ RMK 84.99 us



C

RUSH ACCESSORIES

COVERS

**BAGS & TOURING**

DECALS & WINDSHIELDS

COLORED COMPONENTS

PERFORMANCE PARTS

SHOCKS, HITCHES & ELECTRIC ACCESS.

TRACKS & TRACK CONVERSIONS

STUDS

SKIS & CARBIDES

TRAILERS & GARAGE

OILS & LUBRICANTS



**D. DELUXE TANK MAP BAG**

**ATTACHMENT:** Snaps to side of tunnel

**ADDITIONAL FEATURES:** See through map display

<b>2875073</b>	'05-10 IQ / Fusion/RMK	89.99 us
<b>2875529</b>	'06-10 IQ Touring	89.99 us
<b>2875221</b>	EDGE*	79.99 us
<b>2875530</b>	EDGE Touring*	79.99 us

\* Limited Quantity



**E. UNIVERSAL TANK BAG**

**MATERIAL:** 1680 denier black ballistic nylon, carbon fiber vinyl, 20 gauge clear vinyl pocket for map storage

**ATTACHMENT:** Quick connect/disconnect, easy installation

**CAPACITY:** 594 cu. in. volume

<b>2876031</b>	Universal IQ Tank Bag	69.99 us
----------------	-----------------------	----------



**F. TOURING 2-UP BAG**

**MATERIAL:** 600 denier black polyester, highly UV stable

**ATTACHMENT:** Webbing and J-channel

**CAPACITY:** 1099 cu. in. volume

**ADDITIONAL FEATURES:** Carrying handle

<b>2875964</b>	Rear Touring Bag, EDGE & IQ	59.99 us
----------------	-----------------------------	----------



**G. SEMI-RIGID SADDLE BAGS**

**MATERIAL:** 1000 denier black material

**ATTACHMENT:** Cam and side-release buckle

**CAPACITY:** 2052 cu. in. volume

**ADDITIONAL FEATURES:** Highly structured, semi rigid

<b>2877482</b>	'08-10 IQ 121" & Switchback	149.99 us
----------------	-----------------------------	-----------



**H. IQ SADDLEBAGS**

**MATERIAL:** 1000 denier nylon

**ATTACHMENT:** Cam buckle

**CAPACITY:** 2202 cu. in. volume

**ADDITIONAL FEATURES:** Multiple compartments, integrated seat & saddlebags

<b>2877676</b>	'08-10 IQ 121" & Switchback 136"	149.99 us
----------------	----------------------------------	-----------

<b>2872261</b>	Cam Buckles w/rivets for 1.5" strap	5.99 us
----------------	-------------------------------------	---------

<b>2871916</b>	Cam Buckles w/rivets for 1" strap	2.99 us
----------------	-----------------------------------	---------



**I. TOURING SEMI-RIGID BAGS**

**MATERIAL:** 1000 denier black material

**ATTACHMENT:** Quick-release steel mounting plate

**CAPACITY:** 1026 cu. in. volume

**ADDITIONAL FEATURES:** Highly structured, semi-rigid, must have brackets to install (2875533)

<b>2874940</b>	Semi-Rigid Bag - RH IQ Touring	74.99 us
----------------	--------------------------------	----------

<b>2874941</b>	Semi-Rigid Bag - LH IQ Touring	74.99 us
----------------	--------------------------------	----------

<b>2875533</b>	Semi-Rigid Brackets / IQ Touring	69.99 us
----------------	----------------------------------	----------

**J. HANDLEBAR BAG**

**ATTACHMENT:** Fits on machine with handlebar pad

**ADDITIONAL FEATURES:** Great for hat, spare gloves, towel or wallet

<b>2875067</b>	IQ Handlebar Bag	39.99 us
----------------	------------------	----------

<b>2875068</b>	IQ Handlebar cover with map bag*	39.99 us
----------------	----------------------------------	----------

\* Limited Quantity

**K. WINDSHIELD BAG**

**MATERIAL:** 1680 denier black ballistic nylon

**ATTACHMENT:** Quick installation

**CAPACITY:** 490 cu. in. volume

**ADDITIONAL FEATURES:** Quick access from driver seat

<b>2876032</b>	All IQ	24.99 us
----------------	--------	----------

<b>2875044</b>	All EDGE	34.99 us
----------------	----------	----------



# BAGS & TOURING



## A. SOLO TOURING TRUNK COVER

- » Hard-sided trunk storage in durable plastic
- » Locks shut and offers outstanding protection
- » 2500 cu. in. volume
- » All require Touring Trunk Base Kit PN# 2874556

2877812	IQ   Blue Ice	149.99 us
2875540	IQ   Graphite Metallic	149.99 us
2877229	IQ   Midnight Cherry	149.99 us
2875983	IQ   Black Metallic	149.99 us
2875985	EDGE   Boardwalk Blue*	149.99 us
2875541	EDGE   Supersonic Blue*	149.99 us
2874552	EDGE   Black	149.99 us
2874553	EDGE   Sonic Blue*	149.99 us
2874555	EDGE   Champagne*	149.99 us
2875116	EDGE   Midnight Blue*	149.99 us
2874556	Touring Trunk cover base kit (Water tight storage container)	99.99 us

\* Limited Quantity

**SOLO TOURING TRUNK CONVERSION** Easily add lockable, sealed storage to your IQ or Edge Touring Sled. Remove the storage bag, move the backrest forward, remove passenger handgrips and install the Touring Trunk Base & Cover.



## B. BACKRESTS

- » Perfect fit and fully adjustable two-piece design
- » Premium cushioning for comfort reduces back fatigue
- » Models available for use with or without cargo racks

2873753	EDGE 121" Adjustable Backrest (requires hardware/brace kit, unless EDGE cargo carrier is used)*	229.99 us
2873754	Hardware/Brace kit (for EDGE rear suspension, Non M-10)	39.99 us
2876068	IQ Touring Adjustable Backrest for Transport models	399.99 us

\* Limited Quantity



## C. MODULAR RACKS

- » Durable 1/2" steel tube with black powdercoat finish
- » Luggage bag available
- » 13 gauge steel bottom and side plates

2874562	EDGE LH Side Rack*	99.99 us
2874563	EDGE RH Side Rack*	99.99 us
2875945	IQ LH Side Rack	129.99 us
2875946	IQ RH Side Rack	129.99 us
2874670	Side Rack Bags*	129.99 us
2874621	Rear Rack, EDGE Touring	149.99 us
2874623	Rear 2-Up Rack Bag for 2874621*	99.99 us
2871373	Rear Rack, Gen II Touring Evolved Aggressive*	119.99 us

\* Limited Quantity

RUSH ACCESSORIES

COVERS

BAGS & TOURING

DECALS & WINDSHIELDS

COLOR COMPONENTS

PERFORMANCE PARTS

SHOCKS, HITCHES & ELECTRIC ACCESS.

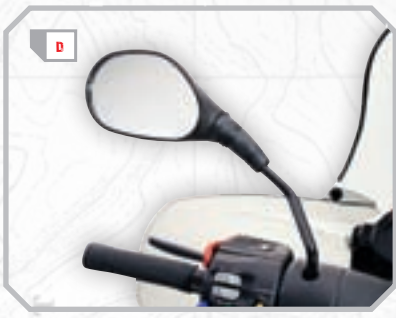
TRACKS & TRACK CONVERSIONS

STUDS

SKIS & CARBIDES

TRAILERS & GARAGE

OILS & LUBRICANTS



**D. IQ HANDLEBAR MIRRORS**

- » Installs to any IQ handlebar
- » Can be used with stock handlebar pad

2876297 | IQ Handlebar Mirrors, Pair 69.99 us



**E. FOLDING HOOD MOUNTED MIRRORS**

- » Non-fogging glass, wide-angle view
- » Folding design is easier to cover
- » Won't vibrate or get knocked out of position

2875140 | '05 Fusion Mirror, Pair 69.99 us

2873751 | EDGE Mirror, Pair 69.99 us

2873752 | Gen II, Pair 69.99 us



**F. SINGLE PIVOT MIRROR**

- » Non-fogging glass with wide-angle view
- » Single pivot fits riders of all heights
- » Universal fit

2870938 | Single Pivot Mirror, Pair\* 31.19 us

\* Limited Quantity



**G. DUAL PIVOT MIRROR FOR IQ**

- » Non-fogging glass, wide-angle view
- » Hood mounted, dual pivot design for fully adjustable positioning

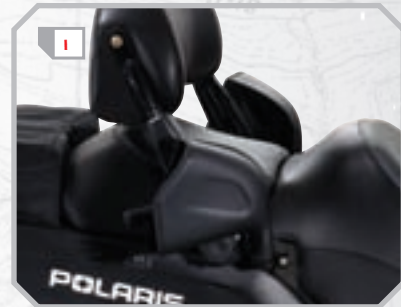
2876042 | All IQ, Pair 49.99 us



**H. HANDLEBAR GAUNTLETS**

- » Keep driver's hands warm at any speed
- » Hook and loop fasteners
- » Water and stain-resistant polyfoam insulation

2874144 | Handlebar Gauntlets, Pair 39.99 us



**I. TOURING HANDWARMER GAUNTLET**

- » Attaches to passenger handgrip of tour sleds
- » Closes to keep snow out

2876047 | IQ & EDGE Touring, WideTrak IQ, Pair 59.99 us



**J. PASSENGER HANDWARMER KIT**

- » Electric warming kit used with warming gauntlet

2875933 | EDGE Touring, 550 Fan '07-10 59.99 us

**K. THUMBWARMER KIT (Not Shown)**

2876332 | IQ Shift '08-10 39.99 us

**L. WIDETRAK IQ RACK BAG**

- » 1680 denier black/grey ballistic nylon
- » Webbing/Velcro attachment
- » 7360 cu. in. volume
- » Top storage compartment holds ice fishing bucket

2877249 | '09-10 WideTrak IQ 109.99 us



# DECALS & WINDSHIELDS

**MAKE IT ALL YOURS.** Customize your sled just the way you want it. Choose from a variety of easy-to-install windshields from 8" to 20" tall, plus decals and decal kits. All decals feature 3M® technology for easy, can't-miss application.



A

B

C. Race Decal Kit, 550 Shift Not Shown

## IQ DECAL KITS

- » Fits all IQ hoods
- » Made of the same 5 year, premium 2 mil film as all Polaris production decals
- » Easy to apply with 3M® patented "Comply" technology with air release channels to eliminate bubbles
- » "Controltac" backer allows the decals to be lightly tacked down without becoming permanent until squeegeed down

Part No.: Fitment / Notes:

<b>A. 2204077</b>	Retro Decal Kit	124.99 us
<b>B. 2203833</b>	Race Decal Kit	124.99 us
<b>C. 2203933</b>	Race Decal Kit, 550 Shift*	124.99 us
<b>D. 2203835</b>	Torch Flame Decal Kit	99.99 us
<b>E. 2203361</b>	Flaming Skulls Decal Kit	99.99 us
<b>F. 2203360</b>	White Flame Decal Kit	99.99 us
<b>G. 2203837</b>	Rally Stripe Decal Kit	49.99 us
<b>H. 2203834</b>	Pink Diva II Decal Kit	99.99 us
<b>I. 2203362</b>	Pink Diva Decal Kit	99.99 us

\* MY '09-'10 550 Shift may require decal modification



D

E

F

G

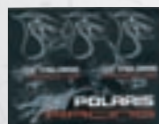
H

I

## POLARIS LOGO DECAL KITS



## DRAGON DECALS



P



Q

## POLARIS DECALS

<b>J. 2851012-01</b>	"Polaris" decal 14" x 2"   White	9.99 us
<b>K. 2851013-01</b>	"Polaris" decal, 40" x 5.5"   White	29.99 us
<b>L. 2851014-01</b>	"Polaris" decal, 72" x 10"   White	24.99 us
<b>M. 2851014-02</b>	"Polaris" decal, 72" x 10"   Blue	24.99 us
<b>N. 2851014-03</b>	"Polaris" decal, 72" x 10"   Black	24.99 us
<b>O. 2871411</b>	Reflective Decal Set - "Polaris" 4.5" set of 6	19.99 us
<b>P. 2850939</b>	Dragon Decal Kit	24.99 us
<b>Q. 2850940</b>	Dragon Decal	39.99 us



**IQ® WINDSHIELDS**

- » Polycarbonate, 20% thicker than stock windshields
- » Choose from heights from 20" to 8"
- » Extremely durable screened graphics
- » Designed for easy on/easy off

Part No.: Fitment / Notes:

<b>R. 2876737</b>	IQ Tall 20"   Tint / Black Fade	119.99 us
<b>S. 2875965</b>	IQ Tall 16.5"   Tint / Black Fade	99.99 us
<b>T. 2877200</b>	IQ Mid 12"   Black w/Red-White Bolts	99.99 us
<b>U. 2876465</b>	IQ Mid 12"   Red Flame Fade	99.99 us
<b>V. 2875504</b>	IQ Mid 12"   Chrome	99.99 us
<b>W. 2875988</b>	IQ Mid 12"   Matte Red, Red Chrome	129.99 us
<b>X. 2875506</b>	IQ Mid 12"   Gloss Black	79.99 us
<b>Y. 2875991</b>	IQ Low 10"   Matte Black w/Red Flame*	69.99 us
<b>Z. 2875990</b>	IQ Low 10"   Matte Black w/Chrome Flame*	69.99 us
<b>AA. 2877816</b>	IQ Low 8"   Matte Black	69.99 us
<b>BB. 2877815</b>	IQ Low 8"   Chrome	69.99 us

\* Limited Quantity. Note: 12"-20" will not work with Handguards



**R. 20" TALL TINT**



**S. 16.5" TALL TINT**



**T. 12" BLACK W/RED WHITE BOLTS**



**U. 12" RED FLAME FADE**



**V. 12" CHROME**



**W. 12" MATTE RED/RED CHROME**



**X. 12" GLOSS BLACK**



**Y. 10" MATTE BLACK W/RED FLAME**



**Z. 10" MATTE BLACK W/CHROME FLAME**



**AA. 8" LOW MATTE BLACK**



**BB. 8" LOW CHROME**

RUSH ACCESSORIES

COVERS

BAGS & TOURING

DECALS & WINDSHIELDS

COLORED COMPONENTS

PERFORMANCE PARTS

SHOCKS, HITCHES & ELECTRIC ACCESS.

TRACKS & TRACK CONVERSIONS

STUDS

SKIS & CARBIDES

TRAILERS & GARAGE

OILS & LUBRICANTS

# COLORED COMPONENTS

**HOOKS AND BARS, SKID PLATES AND SNOW FLAPS.** Pure Polaris has everything you need to give your sled extra protection, comfort, convenience and bling. Choose from a wide variety of colored components designed to fit your new or older Polaris snowmobile.

## A. 09-10 IQ SKID PLATES

- » '09-10 IQ-style fits '09-10 RMKs, 600/800 Dragon SP & 550 IQ Shift
- » 1/4" UHMW plastic protects suspension bulkhead from impact
- » Includes all necessary mounting hardware

2876985-293	'09-10 IQ New Bumper/Plastic	Indy Red	89.99 us
2876985-070	'09-10 IQ New Bumper/Plastic	Black	89.99 us
2876985-570	'09-10 IQ New Bumper/Plastic	Matte White	89.99 us

## B. IQ SKID PLATES

- » IQ-style fits '06-09 Switchback, '06-10 Touring, '05-08 RMK and '06-08 IQ
- » 1/4" UHMW plastic protects suspension bulkhead from impact
- » Includes all necessary mounting hardware

2875092-570	IQ Skidplate	White	89.99 us
2875092-513	IQ Skidplate	Supersonic Blue*	89.99 us
2875092-446	IQ Skidplate	Cosmic Sunburst*	89.99 us
2875092-469	IQ Skidplate	Midnight Blue*	89.99 us
2875092-293	IQ Skidplate	Indy Red	89.99 us
2875092-070	IQ Skidplate	Black	89.99 us
2875092-244	IQ Skidplate	Silver	89.99 us

\* Limited Quantity

## C. FUSION SKID PLATES

- » 1/4" UHMW plastic protects suspension bulk head from impact
- » Includes all necessary mounting hardware

2875075-513	Fusion Skid Plate	Supersonic Blue*	79.99 us
2875075-469	Fusion Skid Plate	Midnight Blue*	79.99 us
2875075-293	Fusion Skid Plate	Indy Red*	79.99 us
2875075-070	Fusion Skid Plate	Black*	79.99 us

\* Limited Quantity

## D. EDGE EXTREME SKID PLATES

- » 25% thicker and wider than our standard, Custom fit
- » Includes all necessary mounting hardware

2873759-070	Skid Plate	Black	79.99 us
2873759-293	Skid Plate	Indy Red*	79.99 us
2873759-341	Skid Plate	Sonic Blue*	79.99 us
2873759-244	Skid Plate	Silver*	79.99 us
2874146	Skid Plate	Diamond plate*	79.99 us

\* Limited Quantity

'09-10 IQ-STYLE SKID PLATE

A



B

IQ SKID PLATE

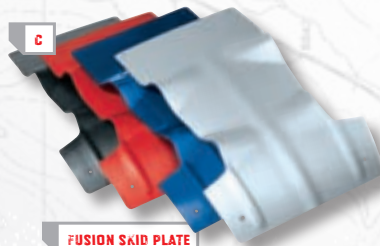


## COLOR LEGEND

Use the following three digit color code at the end of the part number when ordering PURE Polaris accessories that are offered in multiple colors.

293	Indy Red	070	Black
513	Supersonic Blue	244	Silver
341	Sonic Blue	570	White
469	Midnight Blue	453	Avalanche Gray
446	Cosmic Sunburst		

C



FUSION SKID PLATE

D



EDGE EXTREME SKID PLATE



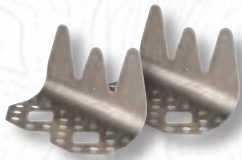
**E. POLARIS HANDGUARDS**

- » Added wind/snow protection
- » Lightweight billet mounts
- » Sold in pairs
- » Will not work with 12"-20" windshields
- » Mounts sold separately

<b>2876846</b>	Handguard	Black	29.99 us
<b>2876883</b>	Handguard	White	29.99 us
<b>2876845</b>	Handguard	Red	29.99 us
<b>2877122</b>	Billet Mount		29.99 us



**BILLET MOUNTS**



**F. TUNNEL REINFORCEMENTS**

- » Factory racer look; easy and quick mounting
- » Fits 550 Shift snowmobile
- » Includes all necessary mounting hardware

<b>2876043</b>	'09-10 550 IQ Shift	49.99 us
----------------	---------------------	----------



**G. MOUNTAIN BAR**

- » More control for deep snow and sidehilling
- » 14" long with universal mounts
- » Raised Polaris logo

<b>2877456-293</b>	Mountain Bar	Indy Red	49.99 us
<b>2877456-070</b>	Mountain Bar	Black	49.99 us



**H. HANDLEBAR HOOKS**

- » For aggressive and mountain riding
- » Comfortable molded plastic; warmer than metal alternatives

<b>2872482-070</b>	Short 45°	Black, Each	19.99 us
<b>2872482-293</b>	Short 45°	Red, Each	19.99 us
<b>2872483-293</b>	Long 90°	Red, Each	19.99 us
<b>2872483-070</b>	Long 90°	Black, Each	19.99 us



**I. IQ FRONT BUMPERS**

- » Fits '06-09 IQ, RMK, Classic Touring and Switchback Models
- » Direct replacement

<b>2875099-293</b>	Indy® Red*	59.99 us
<b>2875099-453</b>	Avalanche Gray*	59.99 us
<b>2875099-513</b>	Supersonic Blue*	59.99 us

\* Limited Quantity



**J. IQ SNOW FLAPS**

- » Durable, impact-resistant plastic
- » Shields from kicked-up snow and ice
- » Fits all IQ Models
- » Includes all necessary mounting hardware

<b>2875078-293</b>	IQ Snowflap	Indy Red	39.99 us
--------------------	-------------	----------	----------



**K. A-ARM GUARDS**

- » Protects A-Arm from debris beneath snow
- » Includes all necessary mounting hardware

<b>2875535-293</b>	IQ RMK A-Arm Guards	Red*	69.99 us
<b>2875535-070</b>	IQ RMK A-Arm Guards	Black	69.99 us

\* Limited Quantity

- RUSH ACCESSORIES
- COVERS
- BAGS & TOURING
- DECALS & WINDSHIELDS
- COLORED COMPONENTS
- PERFORMANCE PARTS
- SHOCKS, HITCHES & ELECTRIC ACCESS.
- TRACKS & TRACK CONVERSIONS
- STUDS
- SKIS & CARBIDES
- TRAILERS & GARAGE
- OILS & LUBRICANTS

# PERFORMANCE

**DIAL IT UP.** Shed some pounds, add some horsepower, raise your bars and more with this wide selection of accessories for performance and mountain riders. Good news: nothing here will void your sled warranty.



A



B



C



LH Elimination Kit

RH Elimination Kit

Footwell Vent Kit



## A. VFORCE<sup>®</sup> 3 REED VALVE SYSTEMS

- » Improved performance and enhanced acceleration
- » Proprietary carbon fiber reed petals
- » Twice the reed tip surface offers instant throttle response
- » Includes all necessary hardware and instruction

<b>2877120</b>	'09 600HO Carb	259.99 us
<b>2877121</b>	'09-10 600 / 700 / 800 Cleanfire	259.99 us

## B. SLP<sup>®</sup> PERFORMANCE EXHAUST SILENCERS

- » SLP<sup>®</sup> and Polaris will crank up your sled's performance with more horsepower and less weight, while keeping engine noise to a minimum.
- » Exclusive silencer from top manufacturer SLP<sup>®</sup>
- » Lowers weight, adds horsepower
- » Creates a rich, full sound
- » Finished with a ceramic coating
- » Will not void warranty

<b>2877734</b>	'10 600 HO / Cleanfire 121"/Switchback/RMK*	264.99 us
<b>2877735</b>	'10 800 Cleanfire 121"/Switchback/RMK*	264.99 us
<b>2877182</b>	'09 600 HO / Cleanfire 121"/Switchback/RMK	264.99 us
<b>2877183</b>	'09 700 Cleanfire RMK	264.99 us
<b>2877184</b>	'09 800 Cleanfire 121"/Switchback/RMK	264.99 us

\* Late '09 delivery

## C. SLP<sup>®</sup> HOT AIR ELIMINATION KITS

- » Helps reduce stagnant under hood hot air to maintain higher horsepower by delivering additional cold air intake and allowing hot air escape
- » Hot air kit installs in bellypan and side panels on IQ, RMK '07-10
- » Footwell kit installs in aluminum side panels on IQ, RMK '07-10

<b>2876647</b>	IQ Hot Air Elimination Kit-RH	64.99 us
<b>2876648</b>	IQ Hot Air Elimination Kit-LH	64.99 us
<b>2876646</b>	IQ RMK Footwell Vent Kits	69.99 us

## D. IQ NEW BUMPER/PLASTIC KIT

- » Update the styling of your '07-09 IQ
- » 3 lb. weight reduction
- » Includes nosepan, aluminum bumper, left and right fenders, all necessary hardware and detailed instructions

<b>2876986</b>	'07-09 IQ	499.99 us
----------------	-----------	-----------



D


**E. DRAGON® 163" BOGIE WHEEL KIT**

- » An alternative to running ice scratchers
- » Includes (6) rail wheels and mounts

<b>2876673</b>   Bogie Wheel Kit	99.99 us
----------------------------------	----------


**F. ICE SCRATCHERS**

- » Fastens to rails to throw ice chips into suspension
- » Drag in snow, lubricating hi-fax
- » Allows removal of wheels equivalent to 4 lbs.

<b>2876256</b>   Ice Scratchers	59.99 us
---------------------------------	----------


**G. REAR OUTER WHEEL KIT**

- » Necessary on an IQ Shift™ for studding track
- » Comes complete with wheels, bearings and hardware for a 3 wheel axle assembly

<b>2876337</b>   '08-10 IQ Shift	49.99 us
----------------------------------	----------


**H. SAWTOOTH LIGHTWEIGHT BRAKE DISC**

- » 1 lb. weight savings
- » Less rotating mass
- » Improved acceleration
- » Fits all IQ models '06-09

<b>2876922</b>   '06-09 IQ 2-stroke models	99.99 us
--	----------


**I. HANDLEBAR RISER (ALUMINUM)**

- |  |          |
|--|----------|
| <b>2871107</b>   ProTaper '09-10 Dragon RMK & Assault RMK, EDGE, 1" Handle Bar Riser | 19.99 us |
| <b>2876264</b>   IQ, RMK, 2.38" Handle Bar Riser                                     | 39.99 us |
| <b>2876265</b>   IQ, RMK, 3.75" Handle Bar Riser                                     | 39.99 us |
| <b>2876266</b>   IQ, RMK, 5.25" Handle Bar Riser                                     | 39.99 us |


**J. LIGHTWEIGHT BACKPACK**

- » 600 denier Polyester
- » Contoured shoulder straps and sliding sternum strap
- » Avalanche probe and shovel sold separately
- » Hydration bag compatible

<b>2874155</b>   Polaris Lightweight Backpack*	79.99 us
--	----------

\* Limited Quantity


**K. 24.0 CM AVALANCHE PROBE**

- » Sturdy, lightweight aluminum
- » 40 cm. long folded

<b>2874916</b>   Avalanche Probe	59.99 us
----------------------------------	----------


**L. 3' EXPANDABLE SHOVEL**

- |                                      |          |
|--------------------------------------|----------|
| <b>2874915</b>   Shovel              | 49.99 us |
| <b>2875094</b>   Mini Scoop with Saw | 59.99 us |

**M. SNOBUNJE® EXTRACTION DEVICE**

- » Maximizes the pulling force of your body
- » Pulls your track into good snow

<b>2874420</b>   Deep snow extrusion device	74.99 us
---	----------

**N. ORTOVOX M2 AVALANCHE BEACON**

- » Rugged waterproof design withstands extreme conditions
- » Sends and receives emergency signals
- » Backlit, easy-to-read digital display quickly leads searcher

<b>2873778</b>   Avalanche Beacon	299.99 us
-----------------------------------	-----------


**O. FUEL CAN RACK**

- » Lightweight aluminum construction
- » Fastens to integrated T-slots
- » Fits up to 8.5" x 12" fuel can
- » Fuel can sold separately

<b>2876765</b>   '07-10 RMK Rack	74.99 us
----------------------------------	----------

<b>7081248</b>   Replacement straps	4.99 us
-------------------------------------	---------



- RUSH ACCESSORIES
- COVERS
- BAGS & TOURING
- DECALS & WINDSHIELDS
- COLORED COMPONENTS
- PERFORMANCE PARTS
- SHOCKS, HITCHES & ELECTRIC ACCESS.
- TRACKS & TRACK CONVERSIONS
- STUDS
- SKIS & CARBIDES
- TRAILERS & GARAGE
- OILS & LUBRICANTS

# SHOCKS, HITCHES & ELECTRICAL

**SHOCK AND AWE.** Here is everything you need in the way of performance shocks, gauges, projector beams and other cool, awe-inspiring stuff.



Front Shock Debris Deflectors

## A. WALKER EVANS®<sup>®</sup> AIR SHOCKS

- » The shock of choice for deep-snow riding
- » 6 lb. weight savings for full set of four shocks
- » 4 lb. savings for IFS alone
- » High performance setup for aggressive off-trail mountain conditions
- » Air Sprung for weight savings and a super compliant ride while taking big hits with little bottoming

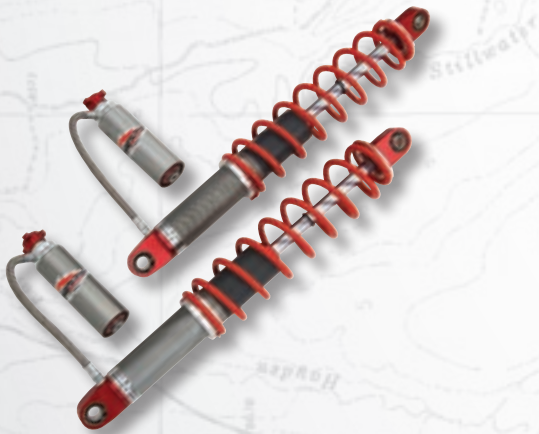
<b>2877457</b>	'07-10 RMK, Front, pair	629.99 us
<b>2876008</b>	'07-10 RMK, Rear (Front air and rear air track shock)	599.99 us
<b>2876984</b>	Front Shock Debris Deflectors, each	14.99 us



## B. WALKER EVANS® RMK AIR PIGGYBACK SHOCKS

- » Similar to the aggressive, big bump control of the Assault IFS shocks
- » Dual Rate Air Spring with over 250 pounds of external spring adjustment @ 3" of shock stroke with supplied Walker Evans Adjuster Wrench
- » Rebuildable and revalvable with conventional Walker Evans shims and oil
- » Ready to bolt on to any '09 or newer 600, 700 or 800 RMK

<b>2877006</b>	'09-10 IQ RMK, Front, each	329.99 us
<b>2876670</b>	'09-10 RMK, Rear (Coil-over front and clicker rear track shock)	499.99 us
<b>2876984</b>	Front Shock Debris Deflectors, each	14.99 us



## C. WALKER EVANS® NEEDLES

- » High-performance trail shocks that offer a wide range of adjustment from extremely compliant for trail chatter to very aggressive for big hits
- » This is enhanced by exclusive Internal Needle Valve Technology that resists bottoming and allows use of the full shock stroke as much as possible
- » 16-position external compression adjustment
- » Wide range of adjustment for all riding styles

<b>2876040</b>	'07-10 IQ 121", Switchback, Rear	599.99 us
<b>2876041</b>	'07-10 IQ 121", Switchback, Front	699.99 us



## D. RYDEFX® AIR 2.0™ SHOCK KIT

- » One piece extruded Aluminum cylinder: Combines solid strength, greater gas retention and light weight performance
- » Pump and valves included in the kit for manual trail side adjustability
- » Includes all necessary mounting hardware

<b>2877142</b>	'08-10 IQ Arvin Air 2.0 kit*	689.99 us
<b>2877143</b>	Air 2.0 pump kit	99.99 us

\* Limited Quantity



121" - 136" Hitch



IQ Touring Hitch



Donut Hitch

Standard Hitch

J Hitch

**E. RECEIVER HITCH**

- » Receiver style hitch
- » Accepts following tow hitches: J-Hitch, Standard Hitch, Donut Hitch

<b>2876562</b>	'05-10 IQ 121"-136" Hitch	99.99 us
<b>2876016</b>	'07-10 IQ RMK Hitch	99.99 us
<b>2876059</b>	'07-10 IQ Touring Hitch	99.99 us
<b>2876058</b>	EDGE Touring Hitch	99.99 us
<b>2876037</b>	'07 Switchback Hitch*	99.99 us
<b>2875118</b>	'05-06 IQ RMK 144"-151"/'06 Switchback Hitch*	99.99 us
<b>2874177</b>	EDGE 121", Switchback, RMK Swivel Hitch	99.99 us
<b>2871370</b>	Gen 2 (except RMK, Indy 500 and Triumph)	49.99 us

\* Limited Quantity

**F. GAUGES**

- » Designed for Polaris sled dashes
- » Calibrated for optimum accuracy
- » Simply installs with a pigtail

<b>2875948</b>	IQ Altitude Gauge - All except 600 Carb	79.99 us
<b>2875949</b>	IQ Temperature Gauge - All except 600 Carb	39.99 us
<b>2875136</b>	12 Volt Outlet, IQ Chassis - All except 600 Carb	39.99 us
<b>2872215</b>	12 Volt Outlet with Battery EDGE '04-09	39.99 us
<b>2874394</b>	Tach Kit 6-pulse, Black & White Face, ('04-05 Supersport, Trail RMK, 550 Classic, Trail Touring)	79.99 us



**G. PROJECTOR BEAM**

- » 55 watts, 200% brighter than stock lighting
- » Shoots 100 yard beam of light, works on high beam only

<b>2874969</b>	Projector Beam, '07-10 Cleanfire, FS / FST '06-10	99.99 us
<b>2875638</b>	Projector Beam, IQ 600 Carb, '06-09	99.99 us

**H. RECEIVER HITCHES**

- » Safety lock pin
- » Heavy-duty steel rod hook
- » Durable e-coat and black powdercoat finish
- » Mounting lock pin for added safety
- » J hitch features a safe spring-loaded lock plate
- » Donut hitch receives up to 1" ropes, wires or tow hooks

<b>2876711</b>	"J" Hitch	49.99 us
<b>2876677</b>	Standard Hitch	29.99 us
<b>2874449</b>	Donut Hitch	29.99 us

**I. KEY-OPERATED ELECTRIC START KITS**

- » This is the ultimate convenience feature you can add to your sled.
- » Easier to use and more consistent than pull starts
- » Nice for extreme cold conditions
- » More consistent than pull starts
- » Electric Start Kits do not include batteries

<b>2877257</b>	'08-10 600 / 700/800 Cleanfire	599.99 us
<b>2877258</b>	'07-09 600 HO Carb	599.99 us
<b>2876033</b>	'07 600 / 700 Cleanfire	599.99 us
<b>2877186</b>	'09-10 IQ 550 Fan	599.99 us
<b>2875122</b>	'05-10 EDGE 550 Fan	599.99 us
<b>2876120</b>	'06 700/900 Cleanfire	599.99 us
<b>2876119</b>	'05 900 IQ	599.99 us
<b>2873876</b>	'02-05 EDGE 500/600 Domestic twin - Non Pro-X	499.99 us

**J. ELECTRIC START KIT BATTERIES**

- » All batteries competitively priced, average savings of more than \$5.00 per battery versus the leading competition
- » Good cranking amps for all starting applications; plenty of capacity for accessories
- » Easy to see electrolyte check

<b>4010774</b>	All IQ Touring Models '06-current	101.99 us
<b>4010466</b>	All FS / FST Models '06-07	139.99 us
<b>4140005</b>	WideTrak LX	114.99 us
<b>4140006</b>	All EDGE Classic Models '00-06	79.99 us
<b>4010630</b>	All Frontier Models '03-05	149.99 us
<b>2859044</b>	Battery Charger	59.99 us

**K. BLOCK & BATTERY HEATERS**

- » Keeps your engine or battery warmer for cold-weather starts

<b>2411109</b>	110V Block Heater - FS / FST	69.99 us
<b>2876200</b>	220V Block Heater - FS / FST	84.99 us
<b>2875950</b>	110V Battery Heater	79.99 us
<b>2875951</b>	220V Battery Heater	84.99 us



220V Block Heater



110V Battery Heater

RUSH ACCESSORIES

COVERS

BAGS & TOURING

DECALS & WINDSHIELDS

COLORED COMPONENTS

PERFORMANCE PARTS

SHOCKS, HITCHES & ELECTRIC ACCESS.

TRACKS & TRACK CONVERSIONS

STUDS

SKIS & CARBIDES

TRAILERS & GARAGE

OILS & LUBRICANTS

# TRACKS & CONVERSIONS

**ALL THE FACTS ON TRACKS.** Want more traction? Replacing an older track? You've come to the right page. Our broad lineup features a variety of lug styles and patterns, in lengths from 121" to 166". See your Polaris dealer to compare tracks, decide which one is right for your sled, and for installation.

## DEEP SNOW: SERIES 5.1 TRACK »



» Industry leading deep powder track. For 8T Drive sprockets, 2.86" pitch. Available in 146," 155" and 163" lengths.

- » Optimized lug pattern producing 19% more forward lug contact compared to our Series 5.0 track
- » Soft and flexible tips for superior performance in deep snow

## DEEP SNOW: SERIES 4 TRACK »



» The standard in 2" deep snow tracks. For 9T Drive sprockets, 2.52" pitch. Available in 144," 151," 159" and 166" lengths.

- » Equal parts versatility and durability
- » Stiff lug base for long wear and hard-pack performance
- » Soft and flexible tips for superior performance in deep snow

## DEEP SNOW: COMPETITION TRACK »



» The proven 2.125" hillclimb track. Available in 146" and 155" lengths.

- » Hillclimb-specific pattern
- » Stiff durometer construction for maximum traction in hard snow
- » Pre-ported for better snow cleanout

## CROSSOVER: COBRA TRACK »



» The trail track that puts more power to the snow. Excellent powder performance without compromising trail ride ability. Available in 121," 136" and 146".

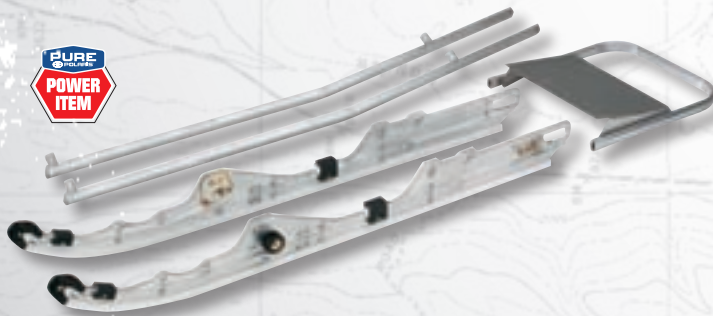
- » Rigid columns for good hard pack capability
- » Stepped columns and angled cutting edge enhance traction, improved handling in corners
- » Connected "cupped" lugs for outstanding performance in soft/loose snow

## ON-TRAIL: RIPSAW TRACK »



» The aggressive side bite for better cornering, the standard in performance trail tracks. Available in 121," 128" and 136" lengths.

- » A high-performance trail track with highly aggressive angled profiles
- » Outstanding forward and lateral bite
- » Superior handling and acceleration in wide variety of conditions



### A. DEEP SNOW TRACK CONVERSION KITS FROM PURE POLARIS

- » An essential upgrade for deep snow mountain riding
- » Extended length delivers more power to the riding surface for improved traction and control
- » Deep lug tracks maximize bite in powdery snow
- » Kits include new rails, snow skirts and all hardware
- » Premium quality parts meet stringent Polaris standards

**2875986** | 136" track kit (121" to 136") '06 Fusion & IQ 499.99 us

**2874236** | 136" track kit (121" to 136"), PRO-X, (fits 2003 121") ☐\* 629.99 us

☐ Requires any 136" track that works w/ wear strip coolers. \* Limited Quantity

### B. IQ RMK 151" RAILS

**2875666** | '05-'06 IQ RMK 151" Rails\* 499.99 us

\* Limited Quantity

### C. 14.4" RAIL BRACE KIT

**2900000** | EDGE RMK\* 99.99 us

\* Limited Quantity





RUSH ACCESSORIES

COVERS

BAGS &amp; TOURING

DECALS &amp; WINDSHIELDS

COLORED COMPONENTS

PERFORMANCE PARTS

SHOCKS, HITCHES &amp; ELECTRIC ACCESS.

**TRACKS & TRACK CONVERSIONS**

STUDS

SKIS &amp; CARBIDES

TRAILERS &amp; GARAGE

OILS &amp; LUBRICANTS

**D. 121" TRACKS**

5413109	121" x .66" Lightning 1/3 Clipped	626.99 us
5411379	121" x 15" x .82"	626.99 us
5411057	121" x .82" Mod Lightning	626.99 us
5412193	121" x 15" x .82" Lightning	626.99 us
5413108	121" x .82" Lightning 1/3 Clipped	626.99 us
5410792	121" x 15" Indy Lite	626.99 us
5412281	121" x 15" x .91" Shockwave	626.99 us
5411839	121" x 15" x .91"	626.99 us
5413198	121" x 15" x 1" HackSaw	626.99 us
5411825	121" x 15" x 1" Mod Lightning	626.99 us
5412645	121" x 15" x 1" RipSaw	626.99 us
2875512	121" x 15" x 1.25" RipSaw	626.99 us
5411963	121" x 1.25" Shockwave Snow X	809.99 us
2877377	121" x 15" x 1.352" Cobra	649.99 us
5412197	121" x 14" x 1.375" Shockwave	626.99 us
5412570	121" x 14" x 1.75" SNO-X	809.99 us
5413000	121" x 14.75" x 1.75" X-CEL*	809.99 us
5413403	121" x 14.75" x 1.75", SNO-XT Full Clipped*	809.99 us

\*Race Only

**E. 128" TRACKS**

5412943	128" x 15" x 1" HackSaw	667.99 us
5412816	128" x 15" x 1.25" RipSaw	686.99 us

**F. 133" TRACKS**

5411687	133" x .82" Lightning	626.99 us
5411060	133" x 1" Mod Lightning	626.99 us
5411021	133.5" x 1.25"	626.99 us

**G. 136" TRACKS**

5413318	136" x 15" x 1" HackSaw	663.99 us
5412298	136" x 15" x 1" Lightning	663.99 us
5413070	136" x 15" x 1"	663.99 us
2875639	136" x 15" x 1.25" RipSaw	674.99 us
2877378	136" x 15" x 1.352" Cobra	699.99 us
5413543	136" x 15" x 1.5" RipSaw	689.99 us
2877246	136" x 15" x 1.75" □	709.99 us
2877209	136" x 15" x 2" Challenger Deep Snow □	772.99 us

□ Can't use wear strips or studs on '09 Switchback with these tracks

**H. 141" TRACKS**

5410748	141" x .91" WideTrak	671.99 us
5412938	141" x 1" WideTrak	559.99 us

**I. 144" TRACKS**

5412168	144" x 1.25"	772.99 us
5413040	144" x 1.5"	772.99 us
5412912	144" x 1.875 Mountain Extreme - 12P	772.99 us
5412888	144" x 2" Series 4 - 12P	819.99 us
5413073	144" X 2" Series 4 - LW	819.99 us
5436126	144" x 2.25" Finger Design	749.99 us

**J. 146" ASSAULT TRACKS**

2877388	146" x 1.352" Cobra	831.99 us
5413490	146" x 2.125" Competition	799.99 us
2877305	146" x 2.4" Series 5.1	823.99 us

**K. 151" TRACKS**

2875514	151" x 1.25" RipSaw	845.99 us
5412913	151" x 1.875" Mountain Extreme - 12P	889.99 us
5412886	151" x 2" Series 4 - 12P	889.99 us
5411996	151" x 2" Hard Durometer	649.99 us
5412883	151" x 2.4" Series 4 - 12P	889.99 us

**L. 155" TRACKS**

5413190	155" x 2.4" Series 5.1	942.99 us
2877304	155" x 2.125" Competition	999.99 us

**M. 156" TRACKS**

5411682	156" x 20" X 1" Shockwave	889.99 us
5412166	156" x 2"	889.99 us

**N. 159" TRACKS**

2874768	159" x 2" Series 4 - Full Clipped	889.99 us
5412185	159" x 2" Series 4	889.99 us
5412884	159" x 2.4" Series 4 12P	889.99 us

**O. 163" TRACKS**

5413233	163" x 2.4" Series 5.1	979.99 us
---------	------------------------	-----------

**P. 166" TRACKS**

2875130	166" x 2.4" Series 4	979.99 us
---------	----------------------	-----------

# STUDS

**HEY STUD.** If you want to dominate on hard-pack snow and ice, you gotta stud your track. Do it right with Woody's® studs and backer plates and you'll optimize acceleration, braking, control and safety on the trails. .

Studs at work. Increased acceleration and more controlled braking.



## HOW TO GET PURE TRACTION ON ICE AND HARD - PACK SNOW.

Adding traction products to your sled improves acceleration, braking and steering control, especially on hard-pack snow and ice. The more aggressive rider you are, the more traction you need. The key is making sure you have the right balance of traction products on your track and skis.

- 1) DETERMINE HOW TO MATCH YOUR RIDING STYLE AND SLED MODEL TO THE CORRECT NUMBER OF STUDS, TYPE OF STUDS AND STUD PATTERN.
- 2) DETERMINE THE RIGHT TYPE AND LENGTH OF TURNING CARBIDES NECESSARY TO BALANCE TRACTION AND OPTIMIZE STEERING.
- 3) MAKE SURE YOU HAVE THE NECESSARY PARTS INSTALLED TO PREVENT THE STUDS FROM DAMAGING YOUR SLED'S TUNNEL AND COOLING SYSTEM.

### Problem 1: Back end is loose in turns.



**Cause:** Too much turning carbide on skis in relation to the number of track studs.

### Problem 2: Front end pushes in turns.



**Cause:** Too little turning carbide on skis in relation to the number of track studs.

### Solution: Ideal Traction



Sled turns like it's on rails. Amount of turning carbide on skis is balanced with the number of track studs.

## A. WEAR STRIP KITS

» Protects tunnel when installing studs

2877687	'08-10 121"/Switchback Inner & Outer	99.99 us
2877744	'09-10 IQ 550 Shift 121"	49.99 us
2875640	M-10 Fusion, Classic, IQ LX	49.99 us
2875414	'06-10 IQ Touring	99.99 us
2874674	EDGE Touring & Transport	99.99 us
2874687	Fusion 121" '05-06, IQ '07	49.99 us
2875415	Switchback '05-07*	99.99 us
2874062	EDGE	99.99 us
2875029	SKS '03, Switchback '04-05*	99.99 us
2876837	600RR	29.99 us

\* Limited Quantity




**B. GRIP KITS**

» Value Pack that includes everything you need to stud your track: Gold Digger studs, nuts, backers, a marker and drill bit

**C. SIGNATURE CARBIDE STUDS**

- » Highly corrosive resistant for harsh conditions
- » 60° carbide pin for consistent performance
- » Impact resistant one piece head

**D. TRACTION MASTER® CARBIDE STUDS**

- » High-carbon alloy steel for maximum durability
- » Head is concave to grip rubber track and maximize rigidity for increased traction control
- » Easy push-through design
- » 5/16" diameter shank

**E. ALUMINUM SQUARE BACKER PLATE**

- » Strong, lightweight alternative to steel
- » Raised crown for dependable support
- » Available for 5/16" studs

**F. STEEL ROUND BACKER PLATE**

- » Raised crown for dependable support and the prevention of stud pull through

**G. STUDDING TEMPLATE AND DRILL BIT**

- » For precise placement of traction studs
- » Template allows setting of drilling marks on track surface
- » Holes are clearly labeled and instructions included

**GRIP KIT STUDS**

2876555	96 – 1.325" Studs, Backers, Marker, Drill Bit	319.99 us
2876557	144 – 1.325" Studs, Backers, Marker, Drill Bit	459.99 us
2876556	96 – 1.075" Studs, Backers, Marker, Drill Bit	299.99 us
2876558	144 – 1.075" Studs, Backers, Marker, Drill Bit	419.99 us

**24 PACK STUDS**

2873133	Traction Master 5/16, 1.08" 24 PK	49.99 us
2873135	Traction Master 5/16, 1.33" 24 PK	49.99 us
2875148	Signature Series 5/16, 1.33" 24 PK	39.99 us

\* Limited Quantity

**96 PACK STUDS**

2871415	Traction Master 5/16, 1.08" 96 PK	209.99 us
2873139	Traction Master 5/16, 1.33" 96 PK	209.99 us
2875155	Signature Series 5/16, 1.08 96 PK	129.99 us
2875149	Signature Series 5/16, 1.33 96 PK	129.99 us

**144 PACK STUDS**

2874074	Mega Bite, 1.45" 144 PK	269.99 us
2871929	Traction Master 5/16, 1" 144 PK	274.99 us
2873140	Traction Master 5/16, 1.08 144 PK	299.99 us
2873141	Traction Master 5/16, 1.18" 144 PK	299.99 us
2873142	Traction Master 5/16, 1.33" 144 PK	299.99 us

**1,000 PACK STUDS**

2873146	Traction Master 5/16, .88" 1,000 PK*	1,699.99 us
2873148	Traction Master 5/16, 1.08" 1,000 PK	1,999.99 us
2873987	Traction Master 5/16, 1.325" 1,000 PK	1,999.99 us
2875153	Signature Series 5/16, 1" 1,000 PK*	999.99 us
2875156	Signature Series 5/16, 1.08" 1,000 PK	1,299.99 us
2875150	Signature Series 5/16, 1.33" 1,000 PK	1,299.99 us

\* Limited Quantity

**BACKER PLATES, ALUMINUM AND STEEL**

2873151	Square Backer Plate Aluminum – 5/16 (24pk)	14.99 us
2873153	Square Backer Plate Aluminum – 5/16 (96pk)	59.99 us
2871932	Square Backer Plate Aluminum – 5/16 (144pk)	79.99 us
2873988	Square Backer Plate Aluminum – 5/16 (1,000 pk)	539.99 us
2874324	Round Backer Plate Aluminum – 5/16 (24pk)	14.99 us
2874325	Round Backer Plate Aluminum – 5/16 (96pk)	44.99 us
2874329	Round Backer Plate Aluminum – 5/16 (1,000pk)	539.99 us

**STUDDING ACCESSORIES**

2871374	Drill Bits, Track Studding 7mm and 5/16"	19.99 us
2875157	Studding Template Plastic	29.99 us



- RUSH ACCESSORIES
- COVERS
- BAGS & TOURING
- DECALS & WINDSHIELDS
- COLORED COMPONENTS
- PERFORMANCE PARTS
- SHOCKS, HITCHES & ELECTRIC ACCESS.
- TRACKS & TRACK CONVERSIONS
- STUDS**
- SKIS & CARBIDES
- TRAILERS & GARAGE
- OILS & LUBRICANTS

# SKIS & CARBIDES

**STEERING IS EVERYTHING.** Upgrade your sled to a set of high-performance plastic skis. Then outfit them with Polaris carbides, precision-built to machine specifications by Woody's®. They optimize steering control and are a must for serious riders who want the absolute best in handling.



A

## PERFORMANCE SKIS

### A. POLARIS IQ2 SKI

Improved performance, control and cornering

- » Aggressive profile for improved trail control
- » Upgrades easily from a steel ski
- » Precision construction, performance tested
- » Less handlebar vibration, Smoother feeling ride

2877680-293 | Indy Red, Each 129.99 us

### B. POLARIS RACE SKI

The race-proven ski for aggressive cornering

- » Factory race proven, aggressive 90° snocross keel
- » Provides improved control and better cornering, reduces darting
- » Wide tip for increased flotation

2900256-070 | Black, Each 149.99 us

2900256-293 | Indy Red, Each 149.99 us

### C. POLARIS SADDLELESS SKI

A great upgrade from a steel ski

- » Improved control
- » Precision construction, performance tested
- » Less handlebar vibration, Smoother feeling ride

2874186-070 | Black, Each 129.99 us

### D. RETRAX® WHEELS

A great touring accessory

- » A must for driving on pavement to maintain control
- » A quick flip of a lever puts wheel down or up

2876066 | Retrax Wheels, Pair 299.99 us

### E. POLARIS SKI TOES

- » Fits all Polaris composite skis for that customized sled look

2876062-293 | Indy Red, Pair 39.99 us

2871877-385 | Cloud Silver, Pair\* 39.99 us

2871877-446 | Cosmic Sunburst, Pair\* 39.99 us

2871877-246 | Rigel Blue, Pair\* 39.99 us

\* Limited Quantity



F

## DEEP SNOW SKIS

### F. GRIPPER SKI

The standard in deep snow performance

- » Deeper upper and lower keel design allows for the best performing ski in loose and hardpacked snow conditions
- » Integrated traction on top of ski for superior grip
- » Deep, 1 1/2" keel for positive steering in loose snow
- » Large, forward biased rocker for reduced steering effort
- » Wide, 6 3/4" ski for increased flotation
- » Carbide skags sold separately

2877679-293 | RMK Ski - '07-10 | Indy Red, Each 129.99 us

2877679-070 | RMK Ski - '07-10 | Black, Each 129.99 us

### G. POWDER PRO II SKI

The ultimate in deep snow performance

- » Provides the ultimate in loose snow performance for maximum flotation and precise steering control
- » Mounting brackets and carbide skags required and sold separately

2874810 | Red Powder Pro II Ski, Pair, kit includes ski loop 279.99 us

2874813 | Black Powder Pro II Ski, Pair 279.99 us

2875539 | Powder Pro Ski Saddle Brackets, Pair 79.99 us

2876083 | 6.25" 90° Pro Ski Carbide Skag, Pair 64.99 us

2876082 | 6.25" 60° Pro Ski Carbide Skag, Pair 64.99 us



G

**SLP**  
Starting Line  
Products, Inc.



D. RETRAX® WHEELS



E



Precision-built to machine specifications by Woody's



Available with 3" to 10" of carbide in 60°, 75° and 90° styles

Ski Type	Note	Style	3" Carbide Skag 49.99 us	4" Carbide Skag 54.99 us	6" Carbide Skag 64.99 us	8" Carbide Skag 84.99 us	10" Carbide Skag 109.99 us	
IQ2 Trak Ski	MY07-10	60°	2875954	2875612	2875613	2875614	-	
IQ Trak	MY06 Fusion	60°	-	2875716	-	-	-	
IQ Trak Dual Ski	MY06-10 2 Per Kit, 1 Kit Per Ski	60°	-	2875431	2874852	2874853	-	
Gripper Ski	MY07-10 Pair	60°	2875723	-	2877880	2877881	-	
Saddleless & Composite Ski	Pair	60°	-	2871688	2871687	2871602	-	
		60° - With Wear Pad	-	2874327*	-	2872282	-	
		75°	-	2873745	2873746*	2873747*	-	
		90°	2872566	2873277	2873894	2873895	-	
	EZ Steer (Composite Ski Only)	120°	2871815	-	-	-	-	
		60°	-	2872493	2872494	-	-	
	Accu-trak Dual Runner	90°	2872412	-	-	-	-	
		Steel Plates, Pair - 2872498 - 39.99 us						
	Accu-trak Dual Runners fit Saddleless Ski only and are sold as single wear bars, 1 kit per ski required.							
	Sidehiller Ski	2 Per Kit, 1 Kit Per Ski	60°	-	2874334	2875146	2875147	-
Widehiller Ski	Pair	60°	-	2875987	-	-	-	
Polaris Race Ski	Pair	60°	-	2875142	2875143	2875145	2875144*	
Steel Ski	Pair	60°	2870693	2871288	2871601	2871602	-	
		60°	-	2870997*	2871603	2871416	-	
Steel Plates, Pair - 2872498 - 39.99 us								
600RR Ski	MY08	60°	-	1822944	-	-	-	
Blow Mold Ski	MY08	60°	2876056	-	-	-	-	
Dragon 120 Ski		60°	-	2874148	-	-	-	

Additional Notes: \*Limited Quantity

RUSH ACCESSORIES

COVERS

BAGS &amp; TOURING

DECALS &amp; WINDSHIELDS

COLORED COMPONENTS

PERFORMANCE PARTS

SHOCKS, HITCHES &amp; ELECTRIC ACCESS.

TRACKS &amp; TRACK CONVERSIONS

STUDS

**SKIS & CARBIDES**

TRAILERS &amp; GARAGE

OILS &amp; LUBRICANTS

# FLOE TRAILERS & GARAGE

**GO WITH THE FLOE.™** It's the absolute best name in snowmobile trailers. Choose from a variety of tilt and ride-on/ride-off models in lengths up to 28 ft. Add some tie-down straps and you're all set.



## A. POLARIS ACE TRAILERS

A world-class combination of style, durability and simplicity. This ultra-rugged high-density polyethylene trailer body with the high-strength extruded aluminum frame makes this the most functional tilt trailer you'll ever own. Bed size is 70" wide by 10' long with 20¾" sides. Available in fender and wheel-well models.



## B. TILT TRAILERS

The Perfect combination of Quality and Value. Patented fast-action tilt clamp is easier because it eliminates the hitch pin which eliminates the vibration and sloppy fit common to inferior trailers. Available in 10' and 12' lengths.



## C. ENCLOSED TRAILERS

Imagine owning an enclosed trailer that tows so easily you'll think it's an open bed trailer! The exceptional aerodynamic design provides you with greater fuel economy and passing power. All aluminum welded frame with heavy .032 gauge smooth aluminum skin. Opens front and rear for easy drive-in/drive-out loading and unloading. Available in 12', 14', 16', 22' and 28' lengths.



## D. POLARIS UTILITY TRAILERS

For work, for play, and everything in between! These rugged trailers have all the same top-quality features and components as our larger tilt models, including FLOE's patented tilt clamp system, but are sized to carry one snowmobile or ATV. With these dimensions, the utility trailer can be used to haul your ATV into tight spots. Once there, you can unload your ATV and hook up the trailer to your ATV for further use.



## E. TIE DOWN STRAPS

» Reliable high-test tie down, secure sleds quickly and confidently

2871182	(2) Pack   Red	14.99 US
2871181	(2) Pack   Black	14.99 US

## F. LOCKING TIE DOWN STRAPS

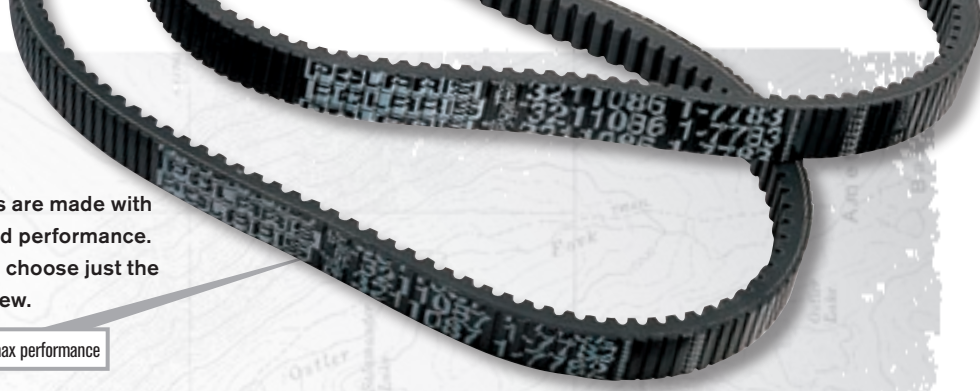
» Holds 1,200 lbs. (544kg) features patented safety lock

2859030	(2) Pack   Red	14.99 US
2859031	(2) Pack   Black	14.99 US
2854721	(4) Pack   Red	27.99 US
2854722	(4) Pack   Black	27.99 US

# BELTS

**PURE PRECISION.** Polaris service parts are made with the highest level of quality, durability and performance. Four levels of belts, for example, let you choose just the right replacement for your sled, old or new.

Use Genuine Polaris Belts for max performance



## POLARIS SNOWMOBILE DRIVE BELT MATRIX

Part No.	Belt Width* (Projected)	Side Angle Degrees*	Center to Center*	Outer Circumference*	Belt Compound & Construction Notes
<b>EDGE, 2-STROKE IQ &amp; IQ RMK CHASSIS</b>					
3211078	1.438" (36.53mm)	28	11.50"	46.625"	Standard – double cog
3211080	1.438" (36.53mm)	28	11.50"	46.625"	CVT compound version of 3211078
3211086	1.438" (36.53mm)	28	11.50"	46.50"	Standard – Close tolerance version of 3211078
3211122	1.46" (37.10cm)	26	11.50"	46.77"	Kevlar – double cog, cut finish
3211115	1.46" (37.10cm)	26	11.50"	46.77"	PBO – double cog, ground/sanded finish
<b>FS / FST</b>					
3211121	1.46" (37.10cm)	26	11.00"	45.79"	Kevlar – double cog, cut finish
<b>340 INDY LITE CHASSIS</b>					
3211058	1.250" (31.75mm)	28	11.03"	43.313"	Standard – P-90 System
3211059	1.250" (31.75mm)	28	12"	45.215"	Standard – P-90 System
3211060	1.250" (31.75mm)	28		45.605"	Standard – P-90 System
<b>MOST STANDARD INDY CHASSIS</b>					
3211042	1.375" (34.93mm)	32	12.00"	47.250"	Standard – P-85 System
3211045	1.375" (34.93mm)	32	12.00"	47.125"	Standard – Close tolerance version of 3211042
3211061	1.375" (34.93mm)	32	12.00"	47.188"	CVT compound version of 3211045
<b>STORM &amp; BIG BLOCK DOMESTIC SLEDS, INDY &amp; GEN II</b>					
3211073	1.438" (36.53mm)	28	12.50"	48.375"	Standard – double cog version of 3211065
3211065	1.438" (36.53mm)	28	12.50"	48.375"	CVT double cog
<b>MOST EVOLVED CHASSIS, INDY XCR 4.40, INDY XCF</b>					
3211070	1.375" (34.93mm)	28	12.00"	47.250"	Standard – P-85 System
3211067	1.375" (34.93mm)	28	12.00"	47.250"	Standard – double cog version of 3211070
3211066	1.375" (34.93mm)	28	12.00"	47.250"	CVT double cog version of 3211070
<b>MOST 1999 AND NEWER GEN II (EXCEPT DOMESTIC BIG BLOCK)</b>					
3211074	1.438" (36.53mm)	28	12.00"	47.625"	Standard – double cog
3211075	1.438" (36.53mm)	28	12.00"	47.625"	CVT version of 3211074
<b>IQ RACE CHASSIS</b>					
3211104	1.438" (36.53mm)	28	10.625"	44.875"	CVT double cog
3211114	1.438" (36.53mm)	26	10.625"	45.20"	PBO – double cog, ground / sanded finish

## COMPOUND AND CONSTRUCTION IDENTIFICATION

STANDARD	CVT	KEVLAR	PBO
<ul style="list-style-type: none"> <li>• Good trail belt for lower horsepower engines</li> <li>• Best suited for low speed operation</li> </ul>	<ul style="list-style-type: none"> <li>• Increased service life over Standard belts</li> <li>• May need 1-2 grams heavier drive clutch weight over Standard belts</li> </ul>	<ul style="list-style-type: none"> <li>• Increased service life over CVT belts by up to 8 times</li> <li>• Cut edges belt; consistent like PBO belts</li> <li>• Short break-in period</li> <li>• May need 1-2 grams heavier drive clutch weight over CVT belts</li> </ul>	<ul style="list-style-type: none"> <li>• Extreme duty belt; longest service life</li> <li>• CNC ground edges on each belt</li> <li>• Longer break-in period</li> </ul>

\* Belt dimensions are given in nominal dimensions. There is a +/- variance for all critical dimensions. Clutch setup must be inspected when a new belt is installed and should be adjusted if necessary. The drive belt is an important component in the CVT system. In order to achieve maximum efficiency from the converter, drive belt deflection (tension), clutch offset, and alignment must be adjusted properly. See your Service Manual for further details on drive belt measurement inspection.

- RUSH ACCESSORIES
- COVERS
- BAGS & TOURING
- DECALS & WINDSHIELDS
- COLORED COMPONENTS
- PERFORMANCE PARTS
- SHOCKS, HITCHES & ELECTRIC ACCESS.
- TRACKS & TRACK CONVERSIONS
- STUDS
- SKIS & CARBIDES
- TRAILERS & GARAGE
- OILS & LUBRICANTS

# OILS & LUBES

**KEEP YOUR SLED PURE.** Insist on Pure Polaris oils and lubricants. They are specially formulated to help you maintain your sled's high performance. Be sure to use them as part of your routine maintenance schedule.



**NEW FOR 10**

## NEW EASY START VES GOLD PLUS FULL SYNTHETIC 2-CYCLE OIL

We set out to improve our best oil, VES Gold and have produced the best performing oil for the next generation of Polaris snowmobiles. With an excess of 600,000 miles and thousands of dyno hours, our oils are proven and tested before they ever reach the shelf in your garage, for the dependability and peace of mind that Pure Polaris lubricants deliver. Formulated for all Polaris 2-cycle engines including those with variable exhaust systems. Engineered to provide:

- » Improved Cold Starting
- » Cleaner Valves
- » Better Lubricity
- » Smokeless / Low-Odor Operation
- » Exceeds Category IV Low Temperature Performance

2877882		Quart		6 per pack
2877883		1 Gallon		4 per pack
2877884		2.5 Gallon		2 per pack
2877885		16 Gallon		1 per pack
2877886		55 Gallon		1 per pack
2877892		330 Gallon		1 per pack

**» AVAILABLE FALL '09**





# NEW EASY START VES GOLD PLUS FULL SYNTHETIC 2-CYCLE OIL



**New Piston**

This piston shows scuffing which can lead to catastrophic engine failure as a result of the use of an inferior synthetic 2-cycle oil.

## ENHANCED LUBRICITY

Enhanced lubricity protects internal engine parts. VES GOLD PLUS offers outstanding film strength that coats and protects, to drastically reduce sliding friction, providing optimum hydrodynamic lubrication. Polaris 2-cycle engines generate high horsepower from small displacement platforms, resulting in high temperature strains on piston, rings, crankshaft, bearings and other internal engine components. VES GOLD PLUS' synthetic base stocks and optimized additive chemistries assure the best lubricity, to protect and prolong, the life of these internal components.



**New Valve**

When exhaust valves have hard carbon deposits on them, they can stick and eventually seize, greatly reducing performance.

**Dirty Valve**

## ENHANCED VALVE CLEANLINESS

New VES GOLD PLUS provides enhanced valve cleanliness. All exhaust valves eventually need servicing, VES GOLD PLUS extends valve maintenance intervals with outstanding dispersancy & detergency, which minimizes deposits. When exhaust valves have hard carbon deposits on them, such as the one in this photo, they can stick and eventually seize, greatly reducing performance. VES GOLD PLUS minimizes deposits on the exhaust valves and other critical areas such as the rings, piston crown and under crown, wrist pins and exhaust ports, resulting in optimal engine performance.

## COLD PULL START (MEASURED IN LBS. OF PULL FORCE)



## ENHANCED COLD PULL STARTING

New VES GOLD PLUS drastically reduces viscous drag, reducing pull effort by 64%! In our Cold Room Testing (-20° F) a snowmobile running VES Gold required 111 lbs. (impulse pounds of pull force) to start the snowmobile, VES GOLD PLUS took 40 lbs. of force to start the snowmobile. Formulated to provide better starting performance in all conditions – including extreme cold temperatures. This full synthetic formula enhances pumpability in all temperatures and exceeds Category IV Low Temperature Performance standards.

RUSH ACCESSORIES

COVERS

BAGS & TOURING

DECALS & WINDSHIELDS

COLORED COMPONENTS

PERFORMANCE PARTS

SHOCKS, HITCHES & ELECTRIC ACCESS.

TRACKS & TRACK CONVERSIONS

STUDS

SKIS & CARBIDES

TRAILERS & GARAGE

OILS & LUBRICANTS



**NEW FOR 10**

**EASY START**



## **A. VES GOLD PLUS SYNTHETIC 2-CYCLE OIL**

- » Best low temp performance of all Pure Polaris oils
- » Cleaner burning, low odor, smokeless oil formula
- » Designed to improve exhaust valve performance
- » Offers maximum engine protection at high RPM
- » Meets Category IV low temperature requirements
- » Additive components reduce exhaust odor

**2877882** | Quart | 6 per pack

**2877883** | 1 Gallon | 4 per pack

**2877884** | 2.5 Gallon | 2 per pack

**2877885** | 16 Gallon | 1 per pack

**2877886** | 55 Gallon | 1 per pack

**2877892** | 330 Gallon | 1 per pack

\* VES GOLD available up to Fall '09. VES GOLD PLUS available in Fall '09.

## **B. PREMIUM SYNTHETIC BLEND 2-CYCLE OIL**

- » Excellent low temperature performance
- » Most advanced synthetic blend 2-cycle lubricant on the market
- » Excellent long term engine protection and detergency
- » Pre-mix or injection

**2875035** | Quart | 12 per pack

**2875036** | 1 Gallon | 6 per pack

**2875038** | 2.5 Gallon | 2 per pack

**2875037** | 16 Gallon | 1 per pack

**2875039** | 55 Gallon | 1 per pack

**2875040** | 330 Gallon | 1 per pack

## **C. HIGH PERFORMANCE SYNTHETIC RACING OIL**

- » Designed to optimize the performance of VES systems
- » The best engine and exhaust valve detergency available
- » Additional anti-wear additive extends ring, cylinder and bearing life
- » Pre-mix or injection
- » The oil exclusively used by the factory racing team

**2873025** | Quart | 6 per pack

**2873023** | 1 Gallon | 4 per pack

**2873919** | 16 Gallon | 1 per pack



## **D. 4-STROKE OIL CHANGE KIT**

- » Kit includes three 1-qt. bottles of premium PS-4 Plus synthetic engine oil, filter and jumper harness

**2875522** | FS, FST | 4 Kits per Case

## **E. PS-4 PLUS SYNTHETIC OIL**

- » Full synthetic designed for Polaris 4-stroke engines
- » Excellent cold weather start-ability plus ultimate engine protection in severe operating conditions

**2876244** | Quart | 12 per pack

**2876245** | 1 Gallon | 4 per pack

**2876247** | 16 Gallon | 1 per pack

**2877490** | 2 Quart | 8 per pack

**2876246** | 55 Gallon | 1 per pack

## **F. ISOPROPYL FUEL DE-ICER**

- » High-tech additive prevents fuel line freezing in extreme cold conditions
- » Formulated for 2-cycle and 4-cycle Polaris engines
- » 1/2 ounce treats 1 gallon of fuel

**2870505** | 1 Quart | 12 per pack

## **G. PREMIUM FUEL STABILIZER**

- » Prevents gasoline oxidation and fuel system corrosion
- » Significantly reduces gum and varnish formation
- » Protects yellow metal and rubber fuel system components
- » Formulated for 2-cycle and 4-cycle Polaris engines

**2870652** | 1 Quart | 12 per pack

**2872280** | 2.5 Gallon | 2 per pack



RUSH ACCESSORIES

COVERS

BAGS &amp; TOURING

DECALS &amp; WINDSHIELDS

COLORED COMPONENTS

PERFORMANCE PARTS

SHOCKS, HITCHES &amp; ELECTRIC ACCESS.

TRACKS &amp; TRACK CONVERSIONS

STUDS

SKIS &amp; CARBIDES

TRAILERS &amp; GARAGE

**OILS & LUBRICANTS**

**H**
**H. GREASE GUN KIT**

- » Tough steel construction and compact pistol grip design
- » Front and top-pipe outlet mounts accept both 6" rigid pipe nozzle and 12" 12,000 psi flex hose
- » Comes complete with grease gun and standard zerk fitting

**2871312** | Grease Kit | 4 per pack

**J**
**I. PREMIUM ALL SEASON GREASE**

- » Engineered for the pressure and temperature demands of Polaris snowmobiles, ATV and watercraft

**2871322** | 3 oz. | 6 per pack, 4 packs

**2871423** | 14 oz. | 10 per pack

**K**
**J. PREMIUM ANTI-FREEZE**

- » Keeps cooling systems flowing at radical sub-zero temperatures
- » Formulated specifically for Polaris snowmobile and ATV high-performance aluminum cooling systems
- » 60/40 pre-mix with deionized water, effective to -62° F

**2871534** | 1 Quart | 12 per pack

**2871323** | 1 Gallon | 6 per pack

**2872278** | 55 Gallon | 1 per pack

**L**
**K. 112 OCTANE RACING FUEL**

- » Consistent blend, excellent shelf life
- » Faster than ordinary fuel
- » Engineered and tested by the Polaris Factory Race Team to meet the demands of high-horsepower stock and modified racing engines
- » Legal-stock fuel for most race sanctions; dilute to meet specific octane requirements
- » Maximum horsepower potential

**2877162** | 16 Gallon | 112 Octane

**2877163** | 55 Gallon | 112 Octane

**M**
**L. CARBON CLEAN FUEL TREATMENT**

- » Dissolves gum & varnish in fuel system
- » Dissolves carbon in combustion chamber
- » Excellent fuel stabilizer for storage
- » Formulated for 2-cycle and 4-cycle Polaris engines

**2871326** | 12 oz. | 12 per pack

**M. HYDRAULIC BRAKE FLUID**

- » Designed for use in Polaris hydraulic brakes
- » Superior high temperature characteristics
- » Anti-corrosive additives extend the life of brake system and ensures consistent, positive braking

**2872189** | DOT 4 12oz. | 12 per pack

**2870990** | DOT 3 12oz. | 12 per pack

**N. PREMIUM SYNTHETIC CHAINCASE LUBRICANT**

- » Prevents rust, oxidation and corrosion of internal chaincase components
- » Synthetic formula engineered and tested by Polaris for snowmobile chains and sprockets
- » Provides maximum protection for extreme operating temperatures
- » Low sulfur additive resists thermal break-down

**2873105** | 1 Quart | 12 per pack

**2873106** | 1 Gallon | 4 per pack

**2872952** | 2.5 Gallon | 2 per pack

**O. GAS SHOCK OILS**

- » Premium formulas to match every shock
- » Eliminate fade and freeze up

**2874522** | Walker Evans® - 5 wt. - 1 Quart | 6 per

**2870995** | Premium FOX® - 1 Quart | 6 per pack

**2872279** | Premium FOX® - 2.5 Gallon | 2 per pack

**2873716** | Premium RydeFX® - 1 Quart | 6 per pack

**N**

**O**



### StarCard Financing – Most convenient & quickest way to get a unit financed today!

- ➔ Financing options are available on purchases of new Polaris products
- ➔ No insurance and no down payment requirements
- ➔ Low monthly payment and special financing options
- ➔ Instant credit decisions

\*Only on approved Polaris StarCard accessory purchases. The estimated Minimum Monthly Payment is based on the products and US purchase prices shown. The amount of your total Minimum Monthly Payment will depend on additional purchases and account balances. See Cardholder Agreement and Disclosure Statement for details.



## GE Money

### Polaris Installment Program

- ➔ Financing options are available on purchases of new & used Polaris products
- ➔ Competitive fixed interest rates
- ➔ Fixed monthly payments
- ➔ Instant credit decisions



- ➔ Financing options are available on purchases of new Polaris products
- ➔ No down payment requirements
- ➔ Competitive fixed interest rates
- ➔ Fixed monthly payments

TERRAIN DOMINATION



# POLARIS

[www.terrain domination.com](http://www.terrain domination.com)

All riders pictured are professionals on a closed course. Polaris recommends that all riders take a training course. Do not attempt maneuvers beyond your capability. Always wear a helmet and other safety apparel. Never drink and ride. Snowmobiles depicted in this brochure may feature PURE™ parts and accessories and are not standard features of the base model snowmobile they accompany. All performance and/or feature and benefit claims are based upon competitive data available at time of printing. For your nearest dealer, call 1-800-POLARIS or go to [terrain domination.com](http://terrain domination.com).

Polaris Industries LTD. 50 Prairie Way, Winnipeg, Manitoba Canada R2J 3J8 (204) 925-7100 Fax (204) 925-7110  
 Polaris Sales Inc., 2100 Hwy. 55, Medina, MN 55340 (763) 542-0500 Fax (763) 542-0599

# POLARISTAR<sup>®</sup>

## PROTECTION PLUS

Protect your investment and take the opportunity to ride worry-free.

**POLARISTAR** is the only extended mechanical breakdown coverage backed by Polaris. Protection is for all factory installed mechanical and electrical operating components. Coverage terms from 12 months to 5 years, with either a \$0 or \$50 deductible option. There are no mileage or hour limitations on covered parts.

Polaris provides coverage for vehicle repairs for 12 months – just a fraction of the life of a vehicle. The **POLARISTAR PROTECTION PLUS** plan provides coverage, and minimizes exposure to potential repair costs for up to 5 years.

Extended coverage protection typically costs less than one moderate failure. Protect yourself from these costly repairs.

Component, System or Part	Estimated repair cost without POLARISTAR PROTECTION PLUS
Engine Overhaul	\$2,000 – \$2,500
Transmission Overhaul	\$1,800 – \$2,000
Differential Overhaul	\$1,000 – \$1,100
Cooling System	\$400 – \$600
Drive Axle Repair	\$600
Front Suspension	\$500
Starter	\$500

You can finance an Extended Service Contract for as little as \$10 more a month. You likely can afford \$10 more a month but might not be able to pay for a major repair.

See customer brochure at your dealership for more information.



\*Unless noted, trademarks are the property of Polaris Industries Inc. eVent™ fabric is a trademark of BHA Technologies, Inc. Reissa™ is a registered trademark of Young Poong Filltex Co., Ltd. Hipora™ is a registered trademark of Kolon Industries, Inc. Cordura®, Thermolite®, and Lycra® are registered trademarks of INVISTA North America S.A.R.L. Taslan® is a registered trademark of Heberlein Maschinenfabrik AG. Hollofil® is a registered trademark of E. I. du Pont de Nemours and Company or its affiliates. Polyfil® is a registered trademark of J & P Coats Limited Corporation. Outlast® is a registered trademark of Outlast Technologies, Inc. Polartec® and Polartec PowerStretch® are registered trademarks of ADS Properties Corporation. GORE-TEX® is a registered trademark of W. L. Gore & Associates, Inc. iPod® is a registered trademark of Apple Computers, Inc. 3M® Reflective Material is a registered trademark of 3M Corporation. Velcro® is a registered trademark of Velcro Industries B.V. Thinsulate® is a registered trademark of Minnesota Mining and Manufacturing Company. Windbloc® is a registered trademark of Malden Mills Industries, Inc. Smith Optics® is a registered trademark of Smith Optics, Inc. OGIO® is a registered trademark of Ogio International, Inc. RydeFx® is a registered trademark of Arvin Ride Control Products, Inc. Walker® shocks is a registered trademark of Walker Evans Racing. Woody's® is a registered trademark of International Engineering and Manufacturing, Inc. SLP® is a registered trademark of Starting Line Products Performance Parts, Inc. EPI® is a registered trademark of Erlandson Performance, Inc. Retrax® Wheels is a registered trademark of Retrax, Inc. Snobunje® is a registered trademark of Snobunje, Inc. Fox Shocks® is a registered trademark of Fox Factory, Inc. FLOE® Trailers is a registered trademark of FLOE International, Inc. Duralux™ is a trademark of KBC America, Inc. Chamude™ is a trademark of Kolon Industries, Inc. Altra-Tech™ is a trademark of Altra-Tech Corp. Ortovox® is a registered trademark of Gerald Kampel. All worldwide rights reserved. Other trademarks used in this catalog owned by their respective owners. Prices and availabilities are subject to change at any moment. Copyright ©2009 Polaris Industries, Inc.