

Kawasaki

2018 Z, VERSYS[®], CONCOURS[®], KLR[™] & KLX[®]
MOTORCYCLES



UNRIVALLED PERFORMANCE

The Kawasaki line of street motorcycles merges ultimate performance with everyday versatility. From the Designed to Defy Z line to the super touring Concours®14 and Versys® 650 urban adventurer, Kawasaki street motorcycles are built for the open road. Whether you're looking for adventure on or off road, the KLR™650 and KLX®250 are sure to make your riding experience unforgettable. No matter what you ride, all Kawasaki motorcycles have one thing in common: they allow you to "Let the good times roll®."



RELIVE THE GOOD TIMES™

The Golden Age of motorcycling, dating back to 1970's, brought style and performance together in a classic, timeless way. It was an unforgettable time period of high-performance bikes, functional beauty with sporty handling that ruled the day. No one captured that classic era more than the Kawasaki Z1 900—The King of the Road. Inspired by the style of Kawasaki's original classic and the sporty simplicity of pure street riding enjoyment, the 2018 line brings Kawasaki's timeless Z styling together with modern performance in the new Z900RS retro-sport motorcycle.





Z900RS

THE LEGEND RETURNS



Rule the streets with Kawasaki's throwback to the retro-classic bike, the new Z900RS motorcycle. Descended from the King of the Road, the original Kawasaki Z1 900, this neo-retro Z brings modern technology together with the timeless design of classic sportbikes. Capture the spirit of 1973 with the naked sport performance and the enthralling sound of the inline four-cylinder muscle bike, and relish the vintage appeal while enjoying open-class Kawasaki power. Cruise the boulevard or head to the canyons with this timeless beauty.



ENGINE	4-stroke, 4-cylinder, DOHC, 16-valve, liquid-cooled
DISPLACEMENT	948cc
TRANSMISSION	6-speed, return shift
FRONT SUSPENSION / WHEEL TRAVEL	Inverted telescopic fork (10-way) with adjustable compression and rebound (12-way) damping, spring preload/4.7
REAR SUSPENSION / WHEEL TRAVEL	Horizontal back-link swingarm with stepless adjustable rebound damping and spring preload/5.5 in
FRONT TIRE	120/70 ZR17 Dunlop GPR-300F
REAR TIRE	180/55 ZR17 Dunlop GPR-300
FRONT BRAKES	Dual disc ABS
REAR BRAKES	Single disc ABS
RAKE/TRAIL	25.4°/3.5 in
SEAT HEIGHT	32.9 in
CURB WEIGHT	471.9 lb**
FUEL CAPACITY	4.5 gal
WHEELBASE	57.9 in

**Curb weight includes all necessary materials and fluids to operate correctly, full tank of fuel (more than 90 percent capacity) and tool kit (if supplied). When equipped, California evaporative emissions equipment adds approximately 2.2 lb.

■ (Z900RS) METALLIC SPARK BLACK

■ (Z900RS) CANDYTONE BROWN / CANDYTONE ORANGE



RETRO STYLING

The new Z900RS awakens the classic beauty of the original Z1 900. In this throwback to the Golden Age of motorcycling, Kawasaki calls upon timeless design elements with minimal bodywork and no fairing for a pure retro-style look. Machined spoke mag wheels and retro paint scheme on the iconic teardrop fuel tank complete the classic appearance of the Z900RS.

POWER & PERFORMANCE

At the heart of every sport muscle bike lies a potent powerhouse, and the Kawasaki Z900RS motorcycle is no exception. The raw sound of the smooth-revving 948cc inline four-cylinder engine will stir your soul, while the aggressive sport performance begs to be ridden harder. A strong low- to mid-range pull for brisk roll-on power and acceleration add up to pure street riding enjoyment.

MODERN FEATURES

The look says 1973, but the technology of the Z900RS brings modern comfort and sport performance to this new retro standard. The multi-function LCD appears along with dual analog dials. Responsive ABS brakes and LED lights bring modern-day ergonomic elements to your ride.



Z FAMILY

DESIGNED TO DEFY

The twist of a grip, the growl of the engine, the adrenaline-pumping thrust of torque—these thrills are why we ride. When the raw elements of sport riding are all you crave, look to the Kawasaki Z family of motorcycles. Pared down to the essentials of performance, the no-frills, all business Z motorcycles harness broad, responsive power in a compact chassis with bold styling, minimalist bodywork and lots of attitude.



Z125 PRO, Z125 PRO SE & Z125 PRO KRT EDITION

REBELLIOUS STREETFIGHTER



Small in size but big on fun, the Kawasaki Z125 PRO motorcycle is a nimble streetfighter that makes a statement wherever it goes. With a low seat height, upright riding position and responsive street tires, it's your invitation to the rebellious side of fun.



■ (Z125 PRO) METALLIC COURAGE GRAY

■ (Z125 PRO) METALLIC FLAT SPARK BLACK / PEARL MYSTIC GRAY / METALLIC SPARK BLACK

■ (Z125 PRO SE) CANDY PLASMA BLUE / METALLIC SPARK BLACK

■ (Z125 PRO) CANDY PERSIMMON RED

■ (Z125 PRO KRT EDITION) LIME GREEN / EBONY

ENGINE	4-stroke, 1 cylinder, SOHC, 2-valve, air-cooled
DISPLACEMENT	125cc
TRANSMISSION	4-speed, return shift
FRONT SUSPENSION / WHEEL TRAVEL	Telescopic fork/3.9 in
REAR SUSPENSION / WHEEL TRAVEL	Swingarm, single shock/4.1 in
FRONT TIRE	100/90-12
REAR TIRE	120/70-12
FRONT BRAKES	Single 200mm petal style disc
REAR BRAKES	Single 184mm petal-style disc
RAKE/TRAIL	26.0°/2.7 in
SEAT HEIGHT	31.7 in
CURB WEIGHT	224.8 lb**
FUEL CAPACITY	2.0 gal
WHEELBASE	46.3 in

**Curb weight includes all necessary materials and fluids to operate correctly, full tank of fuel (more than 90 percent capacity) and tool kit (if supplied). When equipped, California evaporative emissions equipment adds approximately 2.2 lb.



STYLING

The aggressive Z125 PRO is a compact streetfighter that makes a big statement. With a combination of aggressive Z styling, full-face headlight design, modern instrumentation, distinctive shrouds, sharp LED taillight and sporty turn signals, you're sure to deliver a bold statement at every turn.

POWER & PERFORMANCE

Be inspired by the peppy power of the fuel-injected 125cc engine. The four-speed manual transmission offers enhanced sport riding performance combined with smooth power delivery and quick acceleration for a fun time on the streets. Head out with the simple push of the electric starter and stay out for an extended ride with a 2.0-gallon fuel tank capacity.

HANDLING

As the nimblest streetfighter around, the Z125 PRO responds to every move with immediate precision and ease thanks to the lightweight chassis with low center of gravity, progressive suspension damping, 12-inch cast wheels and narrow profile street tires. The offset laydown single-shock with four-way preload adjusts to suit single or two-up riding. Get strong, progressive braking power from the 200mm petal disc front brake and 184mm petal disc rear brake.

Z650 ABS

MIDDLEWEIGHT SUPERNAKED



Aggressive, supernaked Z styling comes to life in an ideal blend of sporty performance and everyday versatility. With distinctive styling, the inspired Sugomi™ design is a condensation of functional beauty, crafted down to the smallest detail. Something possessing Sugomi manifests awe, leaves an indelible impression, is imposing in stature or ability and commands respect.



Non ABS model also available

■ (Z650 ABS) METALLIC SPARK BLACK / METALLIC FLAT SPARK BLACK

■ (Z650 ABS) METALLIC MATTE COVERT GREEN / METALLIC FLAT SPARK BLACK



ENGINE	4-stroke, 2-cylinder, DOHC, water-cooled
DISPLACEMENT	649cc
TRANSMISSION	6-speed, return shift
FRONT SUSPENSION / WHEEL TRAVEL	Telescopic fork/4.9 in
REAR SUSPENSION / WHEEL TRAVEL	Horizontal back-link with adjustable preload, swingarm/5.1 in
FRONT TIRE	120/70 ZR17 Dunlop Sportmax D214F Sportmax
REAR TIRE	160/60 ZR17 Dunlop Sportmax D214
FRONT BRAKES	Dual 300mm petal-type rotors with two-piston calipers, ABS
REAR BRAKES	Single 220mm petal-style disc, ABS
RAKE/TRAIL	24.0°/3.9 in
SEAT HEIGHT	30.9 in
CURB WEIGHT	410.1 lb**
FUEL CAPACITY	4.0 gal
WHEELBASE	55.5 in

**Curb weight includes all necessary materials and fluids to operate correctly, full tank of fuel (more than 90 percent capacity) and tool kit (if supplied). When equipped, California evaporative emissions equipment adds approximately 2.2 lb.

POWER & HANDLING

Ride like you mean it with the sporty engine performance. This modern parallel-twin 649cc engine packs strong torque and mid-range acceleration that's well suited for sport riding. The lightweight chassis with a low center of gravity provides confident maneuverability at lower speeds while the trellis frame contributes to the bike's lightweight feel and responsive handling.

STYLING

Take on the streets with the fierce, predator-like posture of the Z650 ABS. The aggressive Z styling features a bold front face, minimalist bodywork and raw styling inspired by Sugomi™ design. Turn heads with the exciting technical appearance of the exposed trellis frame and engine, and the clean, precise design of the integrated front cowl, windscreen and instrumentation.

ERGONOMICS

The relaxed yet commanding ergonomic design contributes to exceptional handling dynamics, while the integrated rider triangle places the rider inboard to feel one with the bike. The low tapered seat inspires confidence at stops while providing a wider rear platform for optimal comfort and cornering leverage out on the open road.

Z900 ABS

EXCITE THE SENSES



The Z900 ABS motorcycle epitomizes Kawasaki's belief about what the ideal supernaked bike should be. Every twist of the throttle is rewarded with crisp, exhilarating acceleration and an ultra-lightweight chassis lends itself to spirited sport riding. Designed for maximum riding pleasure and easy maneuverability, the Z900 ABS is exceptionally responsive and exciting to ride.



Non ABS model also available

■ (Z900 ABS) PEARL MYSTIC GRAY / METALLIC FLAT SPARK BLACK

■ (Z900 ABS) FLAT EBONY / METALLIC SPARK BLACK

■ (Z900 ABS) CANDY PERSIMMON RED / METALLIC SPARK BLACK



POWER & HANDLING

A superb balance of big power and light responsive handling gives the Z900 ABS a power-to-weight ratio that's optimized for ultimate performance. The powerful 948cc liquid-cooled, four-cylinder engine has a quick-revving character that produces incredible acceleration. A lightweight, narrow chassis and sport-tuned suspension contribute to the light and responsive handling.

STYLING

Aggressive supernaked Z styling combines a dominant front face and sharp minimalist bodywork. This exposes the trellis frame and compact engine for a technical appearance with refined fit and finish. LED Z pattern taillight and sporty turn signals make sure to deliver a bold statement at every turn. One look, and you'll fall in love.

ERGONOMICS

With the relaxed, sporty riding position and wide flat handlebar the rider can easily capitalize on its street riding potential. The commanding ride position places the rider "in" the bike for a confident and connected riding experience, while the low seat height and tapered seat shape allows easy foot placement during stops.

ENGINE	4-stroke, 4-cylinder, DOHC, 16-valve, liquid-cooled
DISPLACEMENT	948cc
TRANSMISSION	6-speed, return shift
FRONT SUSPENSION / WHEEL TRAVEL	41mm inverted fork with rebound damping and spring preload adjustability/4.7 in
REAR SUSPENSION / WHEEL TRAVEL	Horizontal back-link, stepless rebound damping, adjustable spring preload/5.5 in
FRONT TIRE	120/70 ZR17 Dunlop Sportmax D214F Z
REAR TIRE	180/55 ZR17 Dunlop Sportmax D214Z
FRONT BRAKES	Dual 300mm petal-type rotors with four-piston calipers, ABS
REAR BRAKES	Single 250mm petal-type rotor with single-piston caliper, ABS
RAKE/TRAIL	24.5°/4.1 in
SEAT HEIGHT	31.3 in
CURB WEIGHT	463.1 lb**
FUEL CAPACITY	4.5 gal
WHEELBASE	57.1 in

**Curb weight includes all necessary materials and fluids to operate correctly, full tank of fuel (more than 90 percent capacity) and tool kit (if supplied). When equipped, California evaporative emissions equipment adds approximately 2.2 lb.

2018 Z FAMILY ACCESSORIES

PERFORMANCE DRIVEN



Put a personal touch on your Kawasaki Z motorcycle with Kawasaki Genuine Accessories. Built and developed by Kawasaki engineers, these accessories are designed to provide powerful, reliable and versatile performance. For a perfectly integrated fit, easy installation and long-lasting dependability—accessorize your bike with Kawasaki Genuine Accessories.

KAWASAKI GENUINE ACCESSORIES ARE:

DEVELOPED BY KAWASAKI ENGINEERS

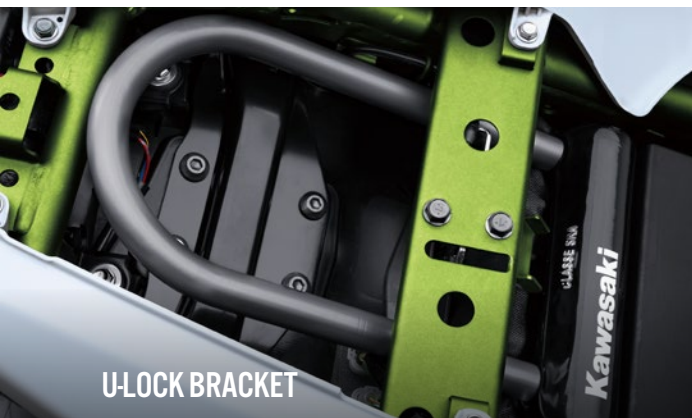
This ensures a perfectly integrated fit, easy installation and long-lasting dependability.

THOROUGHLY TESTED

These accessories meet the same stringent quality standards as every Kawasaki Z motorcycle, as a result of exhaustive testing by Kawasaki engineers.

WARRANTY COMPLIANT

Kawasaki Genuine Accessories never compromise the status of your optional Kawasaki Protection Plus™ like some aftermarket parts.



CHECK OUT KAWASAKI.COM OR VISIT YOUR LOCAL DEALER TO VIEW ALL ACCESSORIES

All accessories and pricing available online.

VERSYS® FAMILY

PERFECTION ON ANY PAVEMENT

If you're looking for the ultimate combination of fun and performance on all types of pavement, nothing packs more versatile practicality than a Versys® motorcycle. Ideal for both urban adventures and playful romps along winding back roads, the Versys family delivers maximum riding excitement across a wide variety of street-riding situations. The unique combination of a comfortable upright riding position, long-travel suspension, smooth power and sporty handling means that you're equipped to tackle any street adventure with exceptional comfort and confidence.



VERSYS®-X 300 ABS

ANY ROAD, ANY TIME.



The Kawasaki Versys®-X 300 ABS is built for an urban adventure. Based on the compact and responsive 296cc twin-cylinder engine, the Versys-X 300 is a nimble-handling lightweight motorcycle that is ready to take on any size adventure. Whether it is commuting or light touring, the Versys-X 300 is a willing companion. With a lightweight chassis and long-travel suspension, the possibilities are endless.



Non ABS model also available

■ (VERSYS®-X 300 ABS) METALLIC SPARK BLACK / METALLIC FLAT RAW GRAYSTONE

■ (VERSYS®-X 300 ABS) PASSION RED / METALLIC FLAT RAW GRAYSTONE



ENGINE	4-stroke, 2-cylinder, DOHC, water-cooled
DISPLACEMENT	296cc
TRANSMISSION	6-speed, return shift
FRONT SUSPENSION / WHEEL TRAVEL	Telescopic fork/5.1 in
REAR SUSPENSION / WHEEL TRAVEL	Uni-Trak® swingarm/5.8 in
FRONT TIRE	100/90-19M/C 57S
REAR TIRE	130/80-17M/C 65S
FRONT BRAKES	Single Disc, ABS
REAR BRAKES	Single Disc, ABS
RAKE / TRAIL	24°/4.3 in
SEAT HEIGHT	32.1 in
CURB WEIGHT	385.9 lb**
FUEL CAPACITY	4.5 gal
WHEELBASE	57.1 in

**Curb weight includes all necessary materials and fluids to operate correctly, full tank of fuel (more than 90 percent capacity) and tool kit (if supplied). When equipped, California evaporative emissions equipment adds approximately 2.2 lb.

STYLING

An upright seating position and ample wind protection mean you can go the distance. A convenient rear carrier makes it equipped for adventure, while spoked wheels and a bold design exude an adventurous spirit.

VERSATILITY

A lightweight motorcycle that is easy to maneuver is one you can take nearly anywhere. From rural back roads to smooth highways, the Versys®-X 300 is your ticket to adventure. A generous fuel capacity allows for fewer fill-ups while the upright riding position, roomy ergonomics and plush suspension offer all-day comfort.

COMFORT & CONVENIENCE

Low seat height and a tapered seat design ensures an easy reach to the ground for greater rider comfort and confidence. The front cowling and front windshield provide excellent wind and weather protection for you and your passenger. With comfort and convenience prioritized, all you have to do is enjoy the ride.

VERSYS® 650 ABS

READY WHEN YOU ARE



With the agility and all-day comfort to carve through canyons, few can match the Versys® 650 ABS motorcycle when it comes to performance, versatility and sheer fun-factor. Answer the call of the open road with the nimble yet powerful 649cc parallel twin-powered Versys 650 ABS. The upright riding position, exceptional long-range potential and sporty chassis are the recipe for a fun open-road adventure on the interstate or through back roads. From your urban commute to your weekend adventure, the Versys 650 ABS is ready to pursue your destination.



ENGINE	4-stroke, 2-cylinder, DOHC, water-cooled, 4 valves per cylinder parallel twin
DISPLACEMENT	649cc
TRANSMISSION	6-speed with positive neutral finder
FRONT SUSPENSION / WHEEL TRAVEL	41mm hydraulic telescopic fork with stepless adjustable rebound and preload/5.9 in
REAR SUSPENSION / WHEEL TRAVEL	Single offset laydown shock with remote adjustable spring preload/5.7 in
FRONT TIRE	120/70 ZR17
REAR TIRE	160/60 ZR17
FRONT BRAKES	Dual 300mm petal-style rotors with 2-piston calipers, ABS
REAR BRAKES	Single 250mm petal-style rotor with single-piston caliper, ABS
RAKE / TRAIL	25°/4.3 in
SEAT HEIGHT	33.1 in
CURB WEIGHT	476.3 lb**
FUEL CAPACITY	5.5 gal
WHEELBASE	55.7 in

**Curb weight includes all necessary materials and fluids to operate correctly, full tank of fuel (more than 90 percent capacity) and tool kit (if supplied). When equipped, California evaporative emissions equipment adds approximately 2.2 lb.

■ (VERSYS® 650 ABS) METALLIC FLAT SPARK BLACK / METALLIC CARBON GRAY

■ (VERSYS® 650 ABS) PEARL BLIZZARD WHITE / METALLIC FLAT SPARK BLACK



ENGINE

The compact 649cc parallel-twin engine is tuned to deliver strong, quick-revving power, especially in the low-to mid-range for an exhilarating ride.



UPRIGHT RIDING POSITION

The upright riding position provides relaxed, heads-up visibility in various riding environments and allows riders to enjoy all-day riding comfort.



LONG-TRAVEL SUSPENSION

The long-travel suspension ensures sporty handling and all-day comfort. It soaks up bumps with ease and helps give riders more confidence on a variety of road conditions.

VERSYS® 650 LT

INSPIRATION EVERYWHERE



The Versys® 650 LT is a highly versatile motorcycle that's equally comfortable navigating city streets or tackling mile after mile of open highway. It comes equipped with a set of color-matched 28-liter Hard Saddlebags featuring Kawasaki Quick Release integrated mounting and a convenient one-key system for saddlebag unlocking and removal. Added Hand Guards provide increased wind protection. With its long-travel suspension, sporty 17-inch wheels, a slim upright riding position and a parallel-twin engine, the Versys 650 LT offers an incredible ride. To top it off, the Versys 650 LT comes standard with a 24-month limited warranty.



ENGINE	4-stroke, liquid-cooled, DOHC, four valves per cylinder parallel twin
DISPLACEMENT	649cc
TRANSMISSION	6-speed with positive neutral finder
FRONT SUSPENSION / WHEEL TRAVEL	41mm hydraulic telescopic fork with stepless adjustable rebound and preload/5.9 in
REAR SUSPENSION / WHEEL TRAVEL	Single offset laydown shock with remote adjustable spring preload/5.7 in
FRONT TIRE	120/70x17
REAR TIRE	160/60x17
FRONT BRAKES	Dual 300mm petal-style rotors with 2-piston calipers, ABS
REAR BRAKES	Single 250mm petal-style rotor with single-piston caliper, ABS
RAKE / TRAIL	25°/4.3 in
SEAT HEIGHT	33.1 in
CURB WEIGHT	476.3 lb** (+ Saddlebags, Handguards, & Hardware approx. 20 lb.)
FUEL CAPACITY	5.5 gal
WHEELBASE	55.7 in

**Curb weight includes all necessary materials and fluids to operate correctly, full tank of fuel (more than 90 percent capacity) and tool kit (if supplied). When equipped, California evaporative emissions equipment adds approximately 2.2 lb.

(VERSYS® 650 LT) METALLIC FLAT SPARK BLACK / METALLIC CARBON GRAY

(VERSYS® 650 LT) PEARL BLIZZARD WHITE / METALLIC FLAT SPARK BLACK



ENGINE

The 649cc liquid-cooled engine pumps out strong low-to mid-range torque that's broad, powerful and responsive, making the Versys® 650 LT a willing accomplice on the streets. Tuned for versatile performance, the compact parallel-twin is a thrill to ride across town or across state lines.

SADDLEBAGS & ACCESSORIES

Kawasaki Quick Release 28-liter Hard Saddlebags and Hand Guards come standard on the Versys® 650 LT. The added function and on-board storage reveal the touring potential. Together, with the ample 5.5-gallon fuel tank and a host of available Kawasaki Genuine Accessories, the possibilities are endless.

EASY ADJUSTABILITY

The versatility carries over to the rider interface with key features like the remote preload adjuster for the shock. Make quick and easy changes to the preload to accommodate for loaded saddlebags or a passenger. The large windshield features up to 2.6 inches of height-adjustability without needing tools. Added features such as the five-way adjustable clutch lever allows the rider to personalize based on preference.

VERSYS® 1000 LT

OPEN ROAD RIDER



Ignite your spirit of open-road adventure with the Versys® 1000 LT motorcycle. This Euro-style touring motorcycle combines liter-class power with all-day comfort and outstanding versatility to take on the road. Long-travel suspension, natural upright riding position and a smooth, powerful engine add up to a comfortable ride for you and your passenger, whether it's on the highway, city streets or remote back roads. To top it off, a 24-month limited warranty will help you get out there and seek new destinations in style with the Versys 1000 LT.



ENGINE	4-stroke, 4-cylinder, DOHC, 16-valve, liquid-cooled
DISPLACEMENT	1,043cc
TRANSMISSION	6-speed
FRONT SUSPENSION / WHEEL TRAVEL	KYB 43mm inverted front fork with adjustable rebound and preload/5.9 in
REAR SUSPENSION / WHEEL TRAVEL	Horizontal back-link shock with adjustable rebound damping and adjustable spring preload, remote preload adjuster/5.9 in
FRONT TIRE	120/70x17
REAR TIRE	180/55x17
FRONT BRAKES	Dual 310mm petal rotors with four-piston calipers, ABS
REAR BRAKES	Single 250mm petal rotor with single-piston caliper, ABS
RAKE / TRAIL	27.0°/4.0 in
SEAT HEIGHT	33.1 in
CURB WEIGHT	549.0 lb (+ Saddlebags, Handguards, & Hardware approx. 20 lb.)
FUEL CAPACITY	5.5 gal
WHEELBASE	59.8 in

*Curb weight includes all necessary materials and fluids to operate correctly, full tank of fuel (more than 90 percent capacity) and tool kit (if supplied). When equipped, California evaporative emissions equipment adds approximately 2.2 lb.

(VERSYS® 1000 LT) METALLIC FLAT SPARK BLACK / METALLIC SPARK BLACK



ENGINE

Powered by a quick-revving 1,043cc inline, four-cylinder engine, the Versys® 1000 LT pours on strong and efficient power, while selectable engine Power Modes and three-mode Kawasaki Traction Control (KTRC) give you the ability to fine-tune the power delivery of the potent engine.

LONG-TRAVEL SUSPENSION

Long-travel suspension is a key element to the versatile prowess, where sporty handling and comfort come together in a remarkably adaptable ride. The long-travel suspension's ability to cope with less-than-perfect street conditions allows the motorcycle to remain composed where bikes with stiffer, sportier set-ups would be far less comfortable.

TOURING FEATURES

Touring the open road is practical and comfortable aboard the Versys® 1000 LT. Two standard-fit Kawasaki Quick Release 28-liter Hard Saddlebags provide an ample amount of utility, while the generous 5.5-gallon fuel capacity ensures you can go the distance. To top it off, the large windscreen features up to 2.95 inches of height-adjustability, without needing tools.

2018 VERSYS® FAMILY ACCESSORIES

ACCESSORIZE YOUR ADVENTURE



The only thing better than a new Kawasaki adventure motorcycle is one that's been personalized by you. Make your Versys® even more unique with a wide variety of Kawasaki Genuine Accessories.



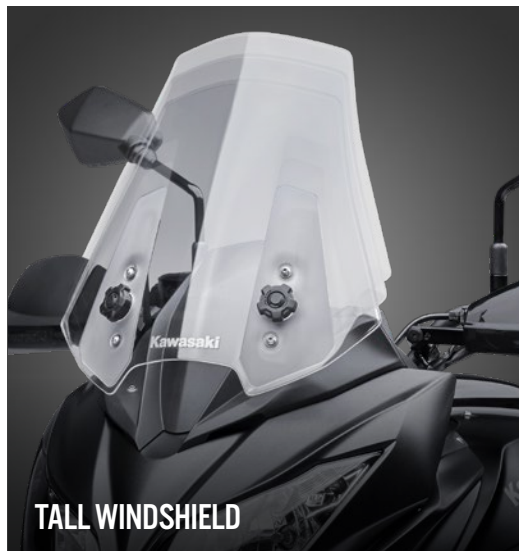
**KQR™
HARD SADDLEBAG SET**



HANDGUARD SHELL SET*



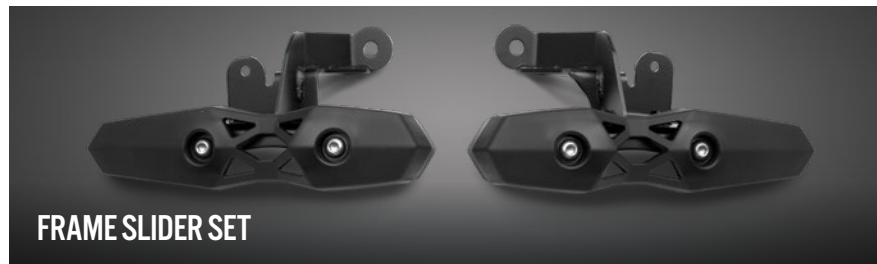
LED LIGHT BAR



TALL WINDSHIELD



GPS MOUNT



FRAME SLIDER SET

*Handguard Set comes standard on Versys LT models



**CHECK OUT KAWASAKI.COM OR VISIT YOUR
LOCAL DEALER TO VIEW ALL ACCESSORIES**

All accessories and pricing available online.

KLX®250

BUILT FOR ADVENTURE



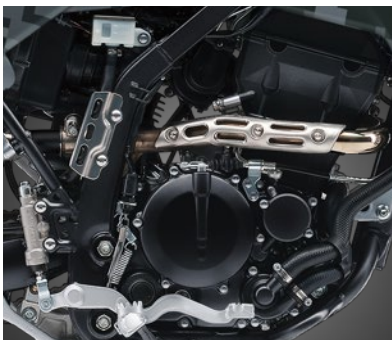
Kawasaki is proud to welcome the KLX®250 motorcycle back to its line of dual purpose motorcycles. With genuine off-road performance that entry-level and experienced dual purpose riders can enjoy, the new KLX250 now features fuel-injection for easy starting and smooth, consistent performance. With the lightest weight and longest suspension travel in its class, the KLX250 is the standard bearer for small-bore dual purpose motorcycles. Ride both on-road and off-road while tackling exciting terrain on the new KLX250—the capable and durable choice for on and off-road riders.



ENGINE	4-stroke, 1-cylinder, DOHC, 4-valves, liquid-cooled
DISPLACEMENT	249cc
TRANSMISSION	6-speed, return shift
FRONT SUSPENSION / WHEEL TRAVEL	Telescopic fork/10.0 in
REAR SUSPENSION / WHEEL TRAVEL	Uni-Trak® swingarm/9.1 in
FRONT TIRE	3.00-21 51P
REAR TIRE	4.60-18 63P
FRONT BRAKES	Single disc
REAR BRAKES	Single disc
RAKE / TRAIL	26.5°/4.1 in
SEAT HEIGHT	35.0 in
CURB WEIGHT	304.3 lb**
FUEL CAPACITY	2.0 gal
WHEELBASE	56.3 in

**Curb weight includes all necessary materials and fluids to operate correctly, full tank of fuel (more than 90 percent capacity) and tool kit (if supplied). When equipped, California evaporative emissions equipment add approximately 2.2 lb.

(KLX®250) LIME GREEN
 (KLX®250) MATRIX CAMO GRAY



ENGINE

The 249cc four-stroke DOHC engine of the KLX®250 receives fuel injection for 2018, creating smooth power and easy starting, consistent performance. Get things started with the push of a button and enjoy the crisp, responsive power on the street or off-road. The steady, predictable pull is ideal for learning riders while smooth traction can throttle you through rugged terrain.

CHASSIS

The KLX®250 is among the most capable entry-level motorcycles in the dual purpose category, featuring the lightest curb weight and most ground clearance in its class. With full-size wheels and tires, comfortably tackle bumps and rocks on the trail, while also cruising the pavement with ease.

SUSPENSION

The KLX®250 can accommodate a wide range of riders thanks to adjustable rear suspension. Coupled with the longest-travel fork in its class, the KLX250 amounts to a superior ride even in challenging off-road terrain. Easy to manage and fun to ride, the KLX250 will put a smile on every rider's face.

KLR™650

BEYOND LIMITS



With the Kawasaki KLR™650 motorcycle, adventure doesn't have to end when the pavement does. Venture beyond the asphalt aboard Kawasaki's capable and dependable dual purpose motorcycle. Simple styling, reliable construction and versatile performance provide the ultimate freedom to take on your daily commute or navigate rugged cross-country terrain. A renowned fixture in the Kawasaki line, the KLR650 has demonstrated its unwavering determination time and again. *Cycle World* magazine calls the KLR650 "simple, effective and dead reliable," and "the default choice for a lightweight, low-cost adventure machine!"



■ (KLR™650) METALLIC SPARK BLACK / METALLIC MATTE CARBON GRAY

■ (KLR™650) PEARL SOLAR YELLOW / METALLIC SPARK BLACK

■ (KLR™650) MATRIX CAMO GRAY / METALLIC MATTE CARBON GRAY

ENGINE	4-stroke, 1-cylinder, DOHC, water-cooled
DISPLACEMENT	651cc
TRANSMISSION	5-speed, return shift
FRONT SUSPENSION / WHEEL TRAVEL	41mm telescopic fork/7.9 in
REAR SUSPENSION / WHEEL TRAVEL	Uni-Trak® single-shock system with 5-way preload and stepless rebound damping/7.3 in
FRONT TIRE	90/90x21
REAR TIRE	130/80x17
FRONT BRAKES	Single 280mm petal-type disc, 2-piston caliper
REAR BRAKES	Single 240mm petal-type disc, 2-piston caliper
RAKE / TRAIL	28.0°/4.4 in
SEAT HEIGHT	35.0 in
CURB WEIGHT	432.0 lb**
FUEL CAPACITY	6.1 gal
WHEELBASE	58.3 in

**Curb weight includes all necessary materials and fluids to operate correctly, full tank of fuel (more than 90 percent capacity) and tool kit (if supplied). When equipped, California evaporative emissions equipment adds approximately 2.2 lb.



ENGINE

The 651cc single-cylinder engine of the KLR™650 motorcycle is a pillar of Kawasaki strength and durability. With rock-solid dependability, this versatile powerplant produces steady low-end torque and a linear power spread. The capable suspension allows you to handle everything from the highway to the winding back roads and arching mountain ridges. Possibility begins with capability and adventure begins with the KLR650 motorcycle.

INSTRUMENTATION

A clean and simple three-gauge instrument panel includes an analog speedometer, tachometer, odometer, trip meter and water temperature gauge along with turn-signal, high-beam and neutral indicator lights.

TOURING FEATURES

Get ready to go the distance. The upper fairing and windscreen work together to help reduce rider wind exposure, as do the standard hand guards. A generous 6.1-gallon fuel tank gives an exceptional riding range, meaning the adventure only stops when you want it to.

CONCOURS®14 ABS

REDEFINED POWER

Does the idea of supersport performance combined with all-day comfort sound like an utter contradiction? It might seem impossible until you meet the Kawasaki Concours®14 ABS motorcycle. Kawasaki's sport-touring powerhouse gets the soul of a Ninja® ZX™-14R sportbike giving it the superior performance of advanced technology and premium features for the ultimate sport touring experience. And to top it off, the Concours14 ABS comes standard with a 36-month limited warranty.

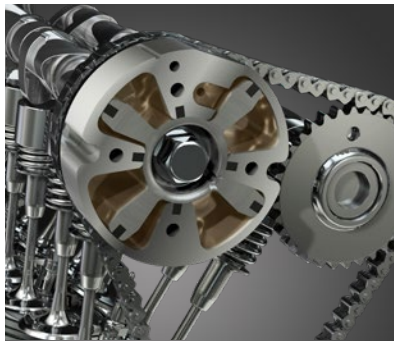




ENGINE	4-stroke, 4-cylinder, DOHC, 4-valve, liquid-cooled
DISPLACEMENT	1,352cc
TRANSMISSION	6-speed
FRONT SUSPENSION / WHEEL TRAVEL	43mm inverted, telescopic fork with adjustable rebound damping and spring preload/4.4 in
REAR SUSPENSION / WHEEL TRAVEL	Tetra-Lever with stepless rebound damping adjustment and remote spring preload adjuster/5.4 in
FRONT TIRE	120/70 ZR-17
REAR TIRE	190/50 ZR-17
FRONT BRAKES	Dual floating 310mm petal-style rotors with four-piston calipers, ABS
REAR BRAKES	Single 270mm petal-style rotor, single-piston caliper, ABS
RAKE / TRAIL	26.0°/4.4 in
SEAT HEIGHT	32.1 in
CURB WEIGHT	690.2 lb (672.5 w/o saddlebags)
FUEL CAPACITY	5.8 gal
WHEELBASE	59.8 in

**Curb weight includes all necessary materials and fluids to operate correctly, full tank of fuel (more than 90 percent capacity) and tool kit (if supplied). When equipped, California evaporative emissions equipment adds approximately 2.2 lb.

(CONCOURS®14 ABS) METALLIC CARBON GRAY / METALLIC FLAT SPARK BLACK



ENGINE

With a 1,352cc engine, the sport touring Concours®14 ABS produces a wide range of smooth revving power. Digital Fuel Injection with a dual throttle-valve system ensures an efficient ride.

K-ACT

Kawasaki Advanced Coactive-braking Technology ABS system (K-ACT) helps boost braking confidence and wield massive stopping power, with dual floating 310mm petal-style rotors and four-piston calipers in the front and a 270mm petal-style rotor in the rear.

TOURING READY

The Concours®14 ABS comes with a host of touring features including a pair of water-resistant Kawasaki Quick Release Hard Saddlebags, an electronically adjustable Windscreen and standard Heated Grips. The Tire Pressure Monitoring System (TPMS) warns of low tire pressure, and the Fuel Economy Assistance Mode helps maximize fuel range. A Tetra-Lever rear suspension with stepless rebound damping adjustment and remote spring preload adjuster helps keeps the ride smooth.

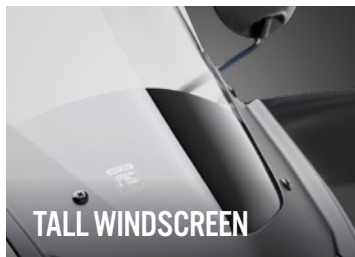
2018 KLR™650 & CONCOURS®14 ABS ACCESSORIES

GO THE DISTANCE

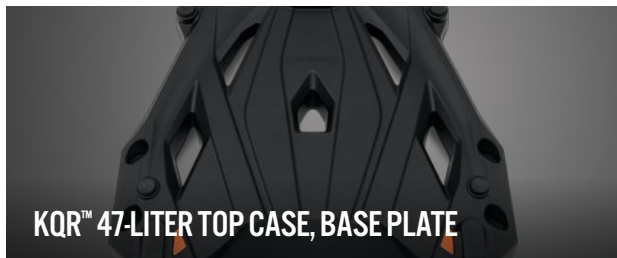


Put a personal touch on your Kawasaki KLR™650 or Concours®14 motorcycle with Kawasaki Genuine Accessories. Developed by Kawasaki engineers, these accessories are designed to provide powerful, reliable and versatile performance. Choose Kawasaki Genuine Accessories for a perfectly integrated fit, easy installation and long-lasting dependability.

KLR™650 ACCESSORIES

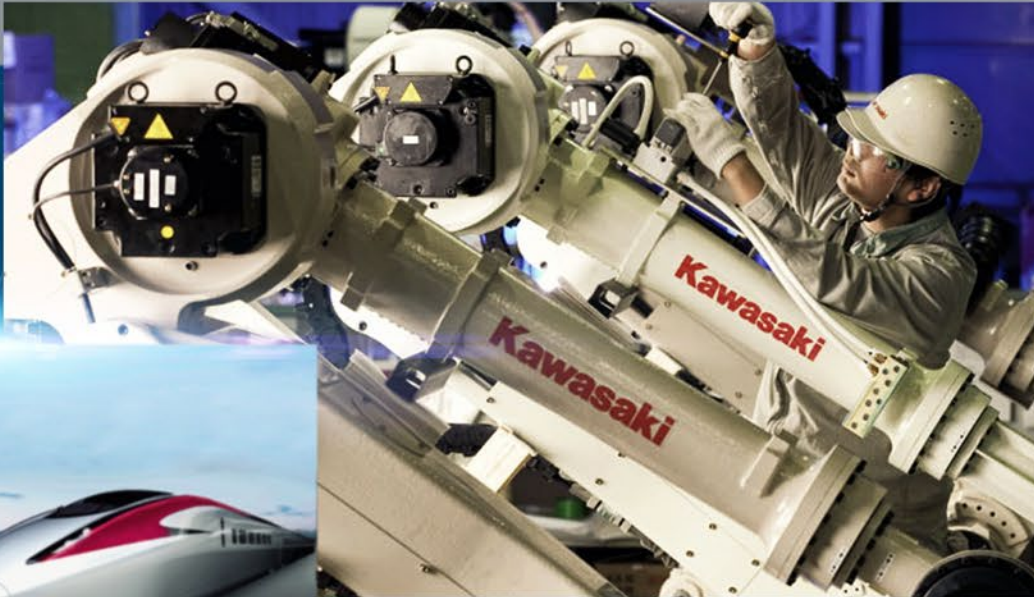


CONCOURS® 14 ABS ACCESSORIES

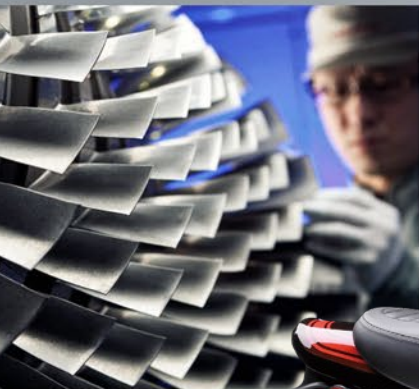


KAWASAKI STRONG

MUCH MORE THAN MOTORCYCLES



With 130 years of Kawasaki Heavy Industries, Ltd. (KHI) engineering building the heaviest, most durable and complex machines on the planet, Kawasaki STRONG is a name we can claim. KHI builds tunnel-boring machines that connect continents and trains that carry millions of New Yorkers in and out of the city 24 hours a day, seven days a week. From these engineering monsters, to the last bolt on the Z900RS, KHI engineering says, over and over: Use me. Rely on me. I'm built to ride.



BULLET TRAINS

You already know KHI builds machines that move people. But, did you know it also builds machines that move thousands of people—all at once? We're talking trains here. From New York City subway cars to Japan's hyper-speed bullet trains, Kawasaki has been in the business since 1906. Whether a 186-mph bullet train or a 1,441cc Ninja® ZX™-14R motorcycle, KHI likes to believe that the technology that goes into moving thousands of people has a positive effect on how it goes about moving just one.

MOTORCYCLES

Since KHI built its first motorcycle engine in 1953, it has never stopped pushing technology to arm riders with what they need to dominate the streets. Advanced engineering, exhaustive testing and tireless passion go into every motorcycle every time rubber hits the road. From industry-first features to the features that have evolved over a long history, KHI's innovations will never stop feeding the insatiable appetites of riders around the world.

ROBOTICS

If robots are the future, then KHI has been shaping it since 1969 when the company built its first industrial robot. KHI continues to be a leader in the development of robots for a diverse number of processes including: assembly, handling, welding, painting and sealing. Kawasaki robot technology is being used every day to manufacture motorcycles and other products.

LIMITED WARRANTY

The Kawasaki Z900RS, Z900, Z900 ABS, Z650, Z650 ABS, Z125 PRO, Versys® 650 ABS, Versys®-X 300, Versys®-X 300 ABS, KLR™650 and KLX®250 motorcycles come with a 12 month limited warranty. The Versys® 1000 LT, and Versys® 650 LT models come with a 24 month limited warranty. The Concours®14 ABS motorcycle comes with a 36 month limited warranty.

UP TO FOUR YEARS ADDITIONAL COVERAGE

Let Kawasaki protect your new vehicle for years to come with Kawasaki Protection Plus™. This plan repairs or replaces covered components free of charge if found defective in material or workmanship. Everything about the plan is easy: There's no deductible. It's honored at every authorized Kawasaki dealer nationwide. It's transferable to another owner with no fee. Just ask your dealer how you can purchase additional coverage of 12, 24, 36, or 48 months (depending on the model and plan purchased). FL Lic #65500, Kawasaki Motors Corp., U.S.A., PO Box 25252, Santa Ana, CA 92799, (949) 770-0400.

KAWASAKI CARES:

Always wear a helmet, eye protection, and proper apparel. Never ride under the influence of drugs or alcohol. Read Owner's Manual and all on-product warnings. Professional riders shown on a closed course.

©2017 Kawasaki Motors Corp., U.S.A. Printed in U.S.A.

99969-3633



Kawasaki