

**MOTORCYCLE
ACCESSORIES
2016**

**DESIGNED
FOR RACERS
BUILT
FOR RIDERS**

aprilia®

FOR APRILIA OWNERS ONLY

#be a racer

CLUB

aprilia®



#BEARACER CLUB IS IDENTITY. IT'S THE PRIDE OF OWNING AN APRILIA. IT'S LOOKING INTO ANOTHER PERSON'S EYES AND DISCOVERING SOMEONE OF YOUR OWN KIND. IT'S WHAT MAKES A MOTORCYCLIST A TRUE RACER.

#BEARACER CLUB IS SOMEONE WHO RIDES THE SAME BIKE AS YOU. IT'S SOMEONE WHO ARRANGES A DATE TO NOTCH UP ONE BEND AFTER ANOTHER. IT'S SOMEONE WHO SHARES THE ADRENALIN OF RIDING ON A RACE TRACK.

#BEARACER CLUB IS "RIDE DIFFERENT". IT'S EVERY WANDERER BEWITCHED BY THE HORIZON ON THE SADDLE OF AN APRILIA.

#BEARACER CLUB IS FRIENDSHIP, EVERY TIME YOU OPEN THE THROTTLE. IT'S SHARING THE "PERFECT SETTING" FOR YOUR FAVOURITE TRACK. IT'S SOMEONE TO SHOW YOUR "WORN OUT" KNEE SLIDER, BEND AFTER BEND.

#BEARACER CLUB IS A PITLANE WHERE YOU CAN SHARE NEWS, PHOTOS, EMOTIONS. WHERE YOU CAN CHAT ABOUT RACETRACKS, ACCESSORIES, JOURNEYS, EXPERIENCES AND MEMORIES ON YOUR BIKE, TECHNOLOGY, RACES. WHERE YOU CAN SHARE YOUR IDENTITY AND THE PRIDE OF BEING AN APRILIA RACER.

LIKE MAX BIAGGI, VALENTINO ROSSI, JORGE LORENZO, LORIS CAPIROSSI AND ALL THE OTHER CHAMPIONS WHO HAVE WON ON THE SADDLE OF AN APRILIA BIKE. A CLUB OF RACERS THAT HAS BEEN WORLD CHAMPION 54 TIMES.

2015
STK 1000
WINNER



WINNING TECHNOLOGY FROM RACE TO ROAD

FROM RACE TO ROAD. SETTING NEW TECHNOLOGICAL STANDARDS IS OUR JOB, OUR DAILY COMMITMENT. THE WORLD TITLES WON BY APRILIA ARE THE RESULT OF CONTINUOUS TECHNOLOGICAL INNOVATION. THE SAME THAT MAKE EVERY APRILIA BIKE UNIQUE, THE SAME THAT MAKE EVERY APRILIA BIKER A RACER. #BEARACER IS A STATE OF MIND, WHICH FEEDS ON EVER NEW CHALLENGES, WHICH IS WHY APRILIA IS ADDRESSING THE MOST TECHNOLOGICALLY AMBITIOUS, RETURNING TO MOTOGP.

FROM THE EXPERIENCE ACQUIRED ON THE TRACK, APRILIA HAS DEVELOPED THE MOST ADVANCED TECHNOLOGIES AND ELECTRONICS: SAFETY AND PERFORMANCE ASSISTANCE SYSTEMS, GEOMETRY ADJUSTMENT, CHASSIS CUSTOMISATION, ENGINE MAPPINGS. TO ALLOW EVERY BIKER TO EXPRESS THEIR MAXIMUM POTENTIAL. EVEN THE MOST EXPERT AND DEMANDING. APRILIA ELECTRONIC SYSTEMS ARE THE BENCHMARK IN THE GLOBAL MOTORCYCLE PANORAMA: RIDE-BY-WIRE, APRC (APRILIA PERFORMANCE RIDE CONTROL), ABS, ADD (APRILIA DYNAMIC DAMPING). THIS IS HOW APRILIA TRANSFORMS RIDING INTO AN ABSOLUTE, SAFE AND EXCITING EXPERIENCE. APRILIA CHASSIS EXCELLENCE IS BUILT AROUND MATERIALS AND SOLUTIONS THAT WIN IN RACING, WITH MANIC ATTENTION TO EVERY DETAIL.

APRILIA: RECORD-BREAKING TECHNOLOGY AND EXCITEMENT. READY FOR MOTOGP.

aprilia®



#be a racer

#32
LORENZO SAVADORI
STK 1000 FIM CUP
CHAMPION



SCHOOL OF CHAMPIONS RACING DNA

54 WORLD TITLES, HUNDREDS OF WINS IN WORLD CLASS MOTOR RACING, SBK AND OFFROAD: APRILIA IS THE MOST VICTORIOUS EUROPEAN BRAND OF ANY IN OPERATION TODAY IN THE HISTORY OF MOTORCYCLING. A RACING TEAM WHICH HAS EXPERIMENTED WITH IDEAS AND TECHNOLOGIES, WHICH HAS ALWAYS SOUGHT OUT NEW CHALLENGES: FROM MOTOGP TO MOTOCROSS, FROM SUPERBIKE TO SUPERMOTARD, FROM RALLY TO TRIAL. MANY OF THE MOST IMPORTANT CHAMPIONS IN THE HISTORY OF MODERN MOTORCYCLING WERE GROOMED AND BECAME VICTORIOUS UNDER THE APRILIA UMBRELLA: MAX BIAGGI, VALENTINO ROSSI, LORIS CAPIROSSI, MARCO MELANDRI, JORGE LORENZO, THIERRY VAN DEN BOSCH, ADRIEN CHAREYRE AND MANY OTHERS. APRILIA HAS SHARED PASSION, CHALLENGES AND WINS WITH ALL OF THEM. THESE ARE THE SAME WINNING EMOTIONS THAT APRILIA SHARES DAILY WITH EVERY BIKER ON THE ROADS AND TRACKS ALL OVER THE WORLD.



ALL THE BEST CHAMPIONS RACED FOR APRILIA

aprilia®



DESIGNED
FOR RACERS
BUILT
FOR RIDERS

aprilia®



**DESIGNED
FOR RACERS**
**BUILT
FOR RIDERS**

aprilia[®]



RSV4 RR / RF

aprilia®






AKRAPOVIC COMPLETE RACING EXHAUST

<i>cod. 894732</i>	EVO 1 - CARBON FACTORY 2013 / R
<i>cod. 899444</i>	EVO 2 RSV4 APRC - CARBON
<i>cod. 899445</i>	EVO 2 RSV4 APRC - TITANIUM
<i>cod. 2S000556</i>	EVO 1 RSV4 RF MY15 - CARBON

Complete Akrapovic racing exhaust system for track use made entirely from titanium with oval muffler in carbon or titanium. The cylinder head mating flanges are machined from solid billet aluminium while the silencer mounting brackets are in carbon fibre. The whole system weighs less than 5 kg and delivers a healthy increase in torque above 4,500 rpm, which is particularly notable from 4,500 to 8,000 rpm, significantly improving acceleration out of turns. Includes dedicated ECU mapping (with three R/S/T settings) to exploit the full potential of the exhaust. Unlike the standard ECU mapping, all three R, S and T maps deliver unlimited power - the S ECU mapping offers smoother response, whereas the R mapping limits torque in the first three gears. For track use only.

aprilia racing

AKRAPOVIC SLIP-ON EXHAUST KIT INCLUSIVE OF RACE TUBE

<i>cod. 606410M</i>	RSV4 RR / RF	
<i>cod. B043763*</i>	RSV4 R / FACTORY / APRC MY09-14 - CARBON	
<i>cod. 895407</i>	RSV4 R / FACTORY MY09-14 - CARBON	
<i>cod. 2S000555</i>	RSV4 MY15 RR/RF - CARBON	

The kit consists of a hexagonal cross section carbon fibre or titanium silencer with extractable Db-killer, titanium header with catalytic converter (and titanium racing header with no catalytic converter*). In the configuration with the Db-killer installed and the header with catalytic converter, the exhaust is homologated compliant with Euro3 sections 5 and 9 rule (emissions and noise) and may be used on public roads without modifying carburetion parameters. Fits onto the standard exhaust header and fastened to the passenger footrest with a specific bracket. An aluminium bracket is available separately for fastening the silencer to the bike without the passenger footrest.

- cod. 606410M for track use only (without catalytic converter)
- cod. B043763 kit includes two headers:
 - one for track use only (without catalytic converter)
 - one for road use - Euro 3
- cod. 895407 for road use - Euro 3
- cod. 2S000555 for road use - Euro 3



APRILIA RACING accessories: intended solely for motorcycles used on circuits closed to public traffic and may not be used for any other purpose.

ALUMINIUM BRACKET KIT

cod. 895430 COMPLETE EXHAUST

Aluminium silencer mounting bracket. For track use only.



cod. 896180 SLIP-ON EXHAUST



ADJUSTABLE FOOTPEGS RACING KIT

cod. 894864 RSV4

cod. 899814 RSV4 APRC

cod. 25000080 RSV4 RR/RF

Made entirely from billet aluminium. Adjustable with 9 different footpeg settings. Fine adjustment of gear and brake levers. With provision for standard brake light switch and for inverted gear lever installation. For track use only.



REVERSE GEAR LEVER RACING KIT

cod. B043548 ALUMINIUM

Mechanical element that reverses the shift gears mode, in order to have a better driving performance on the exit of the turn when racing on the tracks.



RACING FINAL DRIVE KIT (ONLY FOR APRC / R / FACTORY)

cod. 895408 RACING CHAIN 520

cod. 896164 RACING SPROCKET Z = 40

cod. 896165 RACING SPROCKET Z = 42

cod. 896167 RACING PINION Z = 15

cod. 896168 RACING PINION Z = 16

Racing final drive kit for RSV4, consisting of:

- Regina Racing ORNV6W chain with 520 pitch (used by the major Superstock world championship teams)
- Hard anodised Ergal sprocket (40 or 42 teeth)
- Lightweight steel pinion (15 or 16 teeth) • For track use only

The following possible combinations may be installed to reduce rotating masses (all components are lighter than their standard counterparts, the whole kit saves weight by 850 g) and improve acceleration:

- chain, sprocket with 40 teeth and pinion with 16 teeth (drive ratio 2.500 - same as standard)
- chain, sprocket with 42 teeth and pinion with 16 teeth (drive ratio 2.625 - shorter than standard)
- chain, sprocket with 40 teeth and pinion with 15 teeth (drive ratio 2.667 - even shorter)
- chain, sprocket with 42 teeth and pinion with 15 teeth (drive ratio 2.800 - even shorter)



NB: this combination requires the use of the 520 pitch racing chain - the sprocket and pinion cannot be used with the standard chain or in combinations with the standard sprocket and pinion.



N.B.: it is recommended that the final drive components are replaced every 4000 Km or earlier if signs of excessive wear are noted (depending on riding style and conditions)

ECU RACING KIT

cod. CM264504 RACE RSV4 RR / RF

cod. 894864 RACE RSV4

Dedicated engine control unit for track use, pre-programmed with racing ECU mappings. For use on bikes fitted with aftermarket exhaust systems (complete systems or slip-on muffler) NOT supplied by Aprilia. Recommended for use in combination with exhausts with no catalytic converter, with or without Db-killer. Dedicated ECU mapping (with three R/S/T settings) to exploit the full potential of the exhaust. Unlike the standard ECU mapping, all three R, S and T maps deliver unlimited power - the S ECU mapping offers smoother response, whereas the R ECU mapping limits torque in the first three gears. After installation of ECU by an authorised Aprilia service centre, later updates may be downloaded and installed. For track use only.



RSV4 RR/RF

CAP KIT FOR MIRROR MOUNT HOLES

cod. 895320 ALUMINIUM

In billet aluminium. With laser-cut logos. Permits removal of mirrors for track use. For track use only.

aprilia racing



SEMI-HANDLEBARS RACING KIT

cod. 894865 RACING RSV4

cod. B043579 RACING RSV4 APRC / RR / RF

With collars machined from billet aluminium. For a more effective riding position for sports use. For track use only.

aprilia racing



HANDLEBAR COUNTERWEIGHT KIT

cod. 895326 ALUMINIUM

In billet aluminium. With black nylon cap and laser-cut logos. Design with concealed fastener screw.



CRASH PADS KIT

- cod. 894863** RSV4
- cod. 2S000728** RSV4 RR / RF
- cod. B046132** RSV4 FACTORY MY 13
- cod. 896353** RSV4 R

Machined from solid nylon. Mountings in billet aluminium. Distinctive triangular design.



STAND PIN KIT

- cod. 895321** ALUMINIUM

In billet aluminium. Laser-cut logos. Protective nylon crash pad. Design with concealed fastener screw.



BLACK FORGED ALUMINIUM WHEEL RIMS

- cod. 895409** FRONT
- cod. 895410** REAR

Made from forged aluminium alloy. Engineered using advanced simulation and modelling tools such as FEM analysis, these wheel rims offer a weight saving over the standard (cast)* components while still ensuring unrivalled robustness. The resulting reduction in gyroscopic effect and unsprung weight translates to unparalleled responsiveness and agility.



LICENSE PLATE HOLE CAP KIT

- cod. 895322** STEEL

In laser-cut steel. With laser-cut logos. Permits removal of license plate for track use. For track use only.



ADJUSTABLE LICENSE PLATE MOUNTING KIT

- cod. 895323** STEEL

In laser-cut steel. With white LED license plate light. Gives the bike a sleeker and sportier look. For track use only.





LEVERS RACING KIT

cod. 895325 **CLUTCH LEVER**

cod. 895324 **BRAKE LEVER**

In billet aluminium. Lightweight with anodized black finish. Brake lever still maintains millimetre-precise adjustability. Clutch lever with improved ergonomics. For track use only.



LED INDICATORS KIT

cod. 25000048 **HOMOLOGATED**

The LED indicator features lower consumption and higher brightness. Designed in collaboration with Aprilia style centre. Tested in-house in accordance with the most strict Aprilia quality standards.



STEERING DAMPER

cod. 894913 **ÖHLINS**

Öhins steering damper for maximum performance on the road with true racing looks.



FRONT FORK KIT

cod. 896267 **ÖHLINS RSV4 R**

cod. 899328 **ÖHLINS**

Includes Öhins OEM front fork on RF version and the lower steering plate (the upper steering plate on the bike is already compatible with this Öhins fork). Can be mounted without having to replace the existing brake disks, brake calipers and rims.



REAR SHOCK ABSORBER

cod. 895334 **ÖHLINS RR / APRC**

Öhins rear shock absorber (OEM part on RF version), available as an accessory for the RR version. Maximum performance on the road.



REAR SHOCK ABSORBER

cod. 894912 **ÖHLINS TTX36**

Created especially for the RSV4. Fully adjustable. Equippable with linear sensors.



FRONT MUDGUARD KIT

cod. 895394 CARBON

Component from polished carbon fibre (with matte finish). Fits onto the standard calliper mounting brackets for sportier looks evocative of the Factory version.

Front mudguard for USA: cod. 896184



REAR MUDGUARD KIT

cod. 895395 CARBON

Component from polished carbon fibre (with matte finish). Fits onto the standard swingarm for sportier looks evocative of the RF version. Weight saving. Homologated for road use.



HEEL GUARD KIT

cod. 895318 CARBON

In 200g carbon fibre. Less weight and sportier looks. Also compatible with optional adjustable footpegs.



CARBON GUARD KIT

cod. 895319 CARBON

In 200g carbon fibre with an inner heat insulation layer. Fits onto standard exhaust.



CARBON SIDE FAIRINGS KIT

cod. 895396 CARBON - RIGHT

cod. 895397 CARBON - LEFT

Component made from varnished (matte finish) carbon fibre. Used to replace the plastic side fairings to give the bike sportier looks evocative of the Factory version. Weight saving. Homologated for road use.



TANK COVER

cod. B046054

TECHNICAL FABRIC

In technical fabric with carbon effect inserts. With fasteners for small and large tank bags. Tested, approved resistance to oil, fuel and UV light. Ensures ergonomics and stability even at higher speeds. Features a hole for refuelling without removing the cover. With contoured electrostatic tank protector.



TANK BAG

cod. 894868

SMALL - TECHNICAL FABRIC

cod. 897049

LARGE - TECHNICAL FABRIC

In technical fabric with carbon effect inserts. With fasteners for tank cover. Tested, approved resistance to oil, fuel and UV light. Ensures ergonomics and stability even at higher speeds. The small (3 litre) and large (9 litre) tank bags are secured to the tank cover with quick release buckles. With upper map pocket and rain hood. A handle and shoulder strap make the small bag easy to carry.



ROADLOK® DISC LOCK

cod. 898735

Roadlok® is an innovative disk lock and vehicle immobiliser antitheft device created to meet the requirements for security and an easy use. The lock is mounted permanently on the vehicle and impedes any movement of the vehicle itself eliminating the risk of damaging the bike if you forget to release the lock. Simple to use and practical, the only part removed is a pin inserted into the disc ventilation holes, solving the storage problem associated with regular disc locks due to the lack of space under the saddle and extremely secure. Can be used on: RSV4 RF, RSV4 RR, RSV4 Factory, RSV4 R, Tuono V4 R, Caponord 1200, Dorsoduro 1200



RSV4 MOTORBIKE COVER

cod. 894866

FOR INTERNAL USE

Indoor cover. In breathable Lycra. Two-tone black and red colour scheme.



SMARTPHONE MULTIMEDIA PLATFORM

cod. 2D000246

V4-MP MULTIMEDIA PLATFORM RR/RF

cod. 2S000580

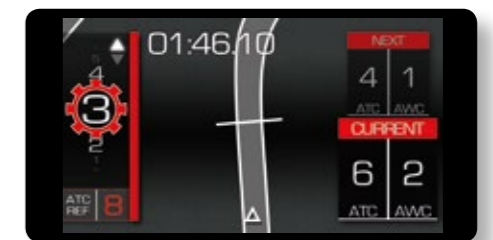
INSTALLATION KIT RR/RF

cod. 2B002460

USB SOCKET KIT RR/RF

Multimedia Platform is a new device which allows the vehicle to be easily connected to a Smartphone, transforming it into a true and proper on board computer, capable of managing all the information relative to the vehicle and information which can be useful for the trip. Designed in collaboration with Aprilia style centre. Tested in-house in accordance with the most strict Aprilia quality standards. For RSV4 RF only. Install kit required. USB socket kit also available.

For further info visit: www.aprilia.com



TUONO V4
1100 FACTORY /
1100 RR

aprilia[®]



TUONO V4

1100 FACTORY /

1100 RR

AKRAPOVIC COMPLETE RACING EXHAUST

cod. 894732 **EVO 1 - CARBON**

Complete Akrapovic racing exhaust system for track use made entirely from titanium with oval muffler in carbon or titanium. The cylinder head mating flanges are machined from solid billet aluminium while the silencer mounting brackets are in carbon fibre. The whole system weighs less than 5 kg and delivers a healthy increase in torque above 4,500 rpm, which is particularly notable from 4,500 to 8,000 rpm, significantly improving acceleration out of turns. Includes dedicated ECU mapping (with three R/S/T settings) to exploit the full potential of the exhaust. Unlike the standard ECU mapping, all three R, S and T maps deliver unlimited power - the S ECU mapping offers smoother response, whereas the R mapping limits torque in the first three gears. For track use only.

aprilia racing

AKRAPOVIC SLIP-ON EXHAUST KIT INCLUSIVE OF RACE TUBE

cod. B043763* **E3 - CARBON**

Euro3

cod. 895407 **E3 - CARBON**

Euro3

The kit consists of a hexagonal cross section carbon fibre or titanium silencer with extractable Db-killer, titanium header with catalytic converter (and titanium racing header with no catalytic converter*). In the configuration with the Db-killer installed and the header with catalytic converter, the exhaust is homologated compliant with Euro3 sections 5 and 9 rule (emissions and noise) and may be used on public roads without modifying carburetion parameters. Fits onto the standard exhaust header and fastened to the passenger footrest with a specific bracket. An aluminium bracket is available separately for fastening the silencer to the bike without the passenger footrest.

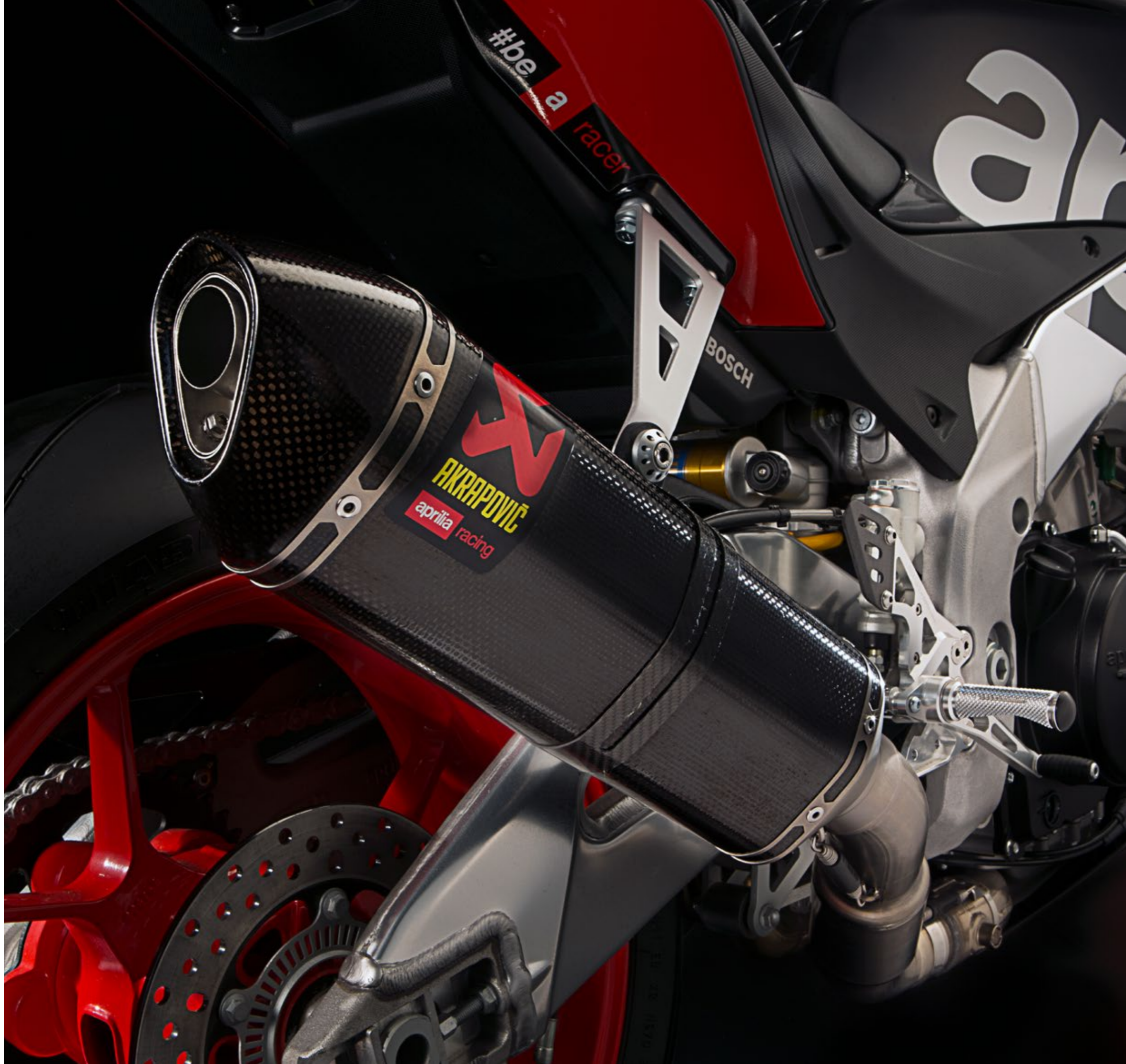
cod. B043763 kit includes two headers:
• one for track use only (without catalytic converter)
• one for road use - Euro 3

cod. 895407 for road use - Euro 3



APRILIA RACING accessories: intended solely for motorcycles
and not for use on public roads. Do not use on public roads
for any other purpose.

aprilia racing



TUONO V4 1100 FACTORY / 1100 RR

aprilia®

ALUMINIUM BRACKET KIT

cod. 895430 COMPLETE EXHAUST

Aluminium silencer mounting bracket. For track use only.

aprilia racing



cod. 896180 SLIP-ON EXHAUST

aprilia racing



REVERSE GEAR LEVER RACING KIT

cod. B043548 ALUMINIUM

Mechanical element that reverses the shift gears mode, in order to have a better driving performance on the exit of the turn when racing on the tracks.



aprilia racing

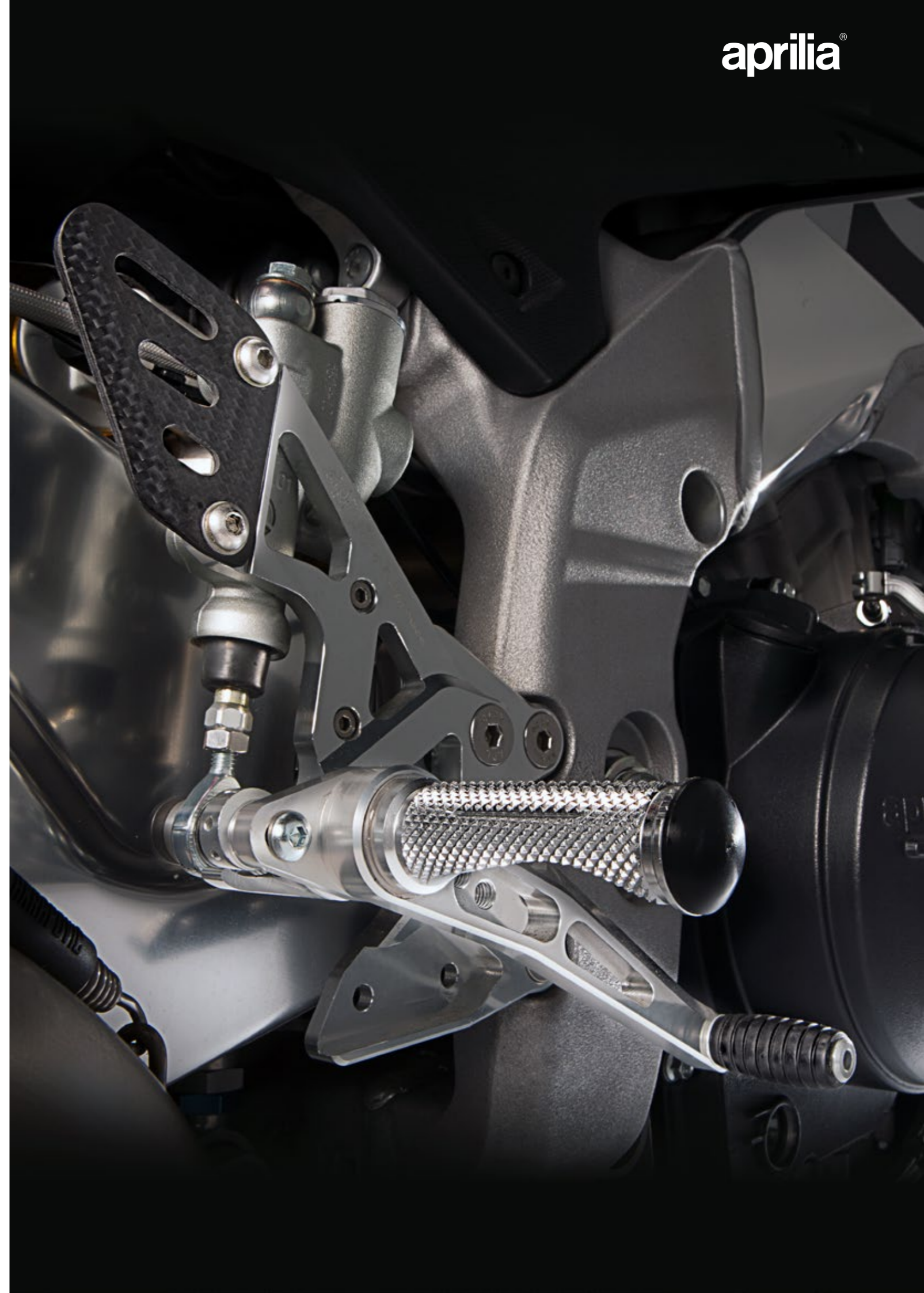
ADJUSTABLE FOOTPEGS RACING KIT

cod. 899814 TUONO APRC

cod. 25000080 TUONO V4 FACTORY / RR

Made entirely from billet aluminium. Adjustable with 9 different footpeg settings. Fine adjustment of gear and brake levers. With provision for standard brake light switch and for inverted gear lever installation. For track use only.

aprilia racing



TUONO V4 1100 FACTORY / 1100 RR

RACING FINAL DRIVE KIT (ONLY FOR APRC / R / FACTORY)

cod. 895408	RACING CHAIN 520		
cod. 896164	RACING SPROCKET Z = 40	cod. 896167	RACING PINION Z = 15
cod. 896165	RACING SPROCKET Z = 42	cod. 896168	RACING PINION Z = 16

Racing final drive kit for RSV4, consisting of:

- Regina Racing ORNV6W chain with 520 pitch (used by the major Superstock world championship teams)
- Hard anodised Ergal sprocket (40 or 42 teeth)
- Lightweight steel pinion (15 or 16 teeth) • For track use only

The following possible combinations may be installed to reduce rotating masses (all components are lighter than their standard counterparts, the whole kit saves weight by 850 g) and improve acceleration:

- chain, sprocket with 40 teeth and pinion with 16 teeth (drive ratio 2.500 - same as standard)
- chain, sprocket with 42 teeth and pinion with 16 teeth (drive ratio 2.625 - shorter than standard)
- chain, sprocket with 40 teeth and pinion with 15 teeth (drive ratio 2.667 - even shorter)
- chain, sprocket with 42 teeth and pinion with 15 teeth (drive ratio 2.800 - even shorter)



! NB: this combination requires the use of the 520 pitch racing chain - the sprocket and pinion cannot be used with the standard chain or in combinations with the standard sprocket and pinion

! N.B.: it is recommended that the final drive components are replaced every 4000 Km or earlier if signs of excessive wear are noted (depending on riding style and conditions)

ECU RACING KIT

cod. CM266604	RACE TUONO V4 FACTORY / RR
cod. 896309	RACE TUONO APRC

Dedicated engine control unit for track use, pre-programmed with racing ECU mappings. For use on bikes fitted with aftermarket exhaust systems (complete systems or slip-on muffler) NOT supplied by Aprilia. Recommended for use in combination with exhausts with no catalytic converter, with or without Db-killer. Dedicated ECU mapping (with three R/S/T settings) to exploit the full potential of the exhaust. Unlike the standard ECU mapping, all three R, S and T maps deliver unlimited power - the S ECU mapping offers smoother response, whereas the R ECU mapping limits torque in the first three gears. After installation of ECU by an authorised Aprilia service centre, later updates may be downloaded and installed. For track use only.



BLACK FORGED ALUMINIUM WHEEL RIMS

cod. 895409	FRONT	cod. 895410	REAR
--------------------	--------------	--------------------	-------------

Made from forged aluminium alloy. Engineered using advanced simulation and modelling tools such as FEM analysis, these wheel rims offer a weight saving over the standard (cast)* components while still ensuring unrivalled robustness. The resulting reduction in gyroscopic effect and unsprung weight translates to unparalleled responsiveness and agility.



AIR FILTER KIT

cod. B044225

Air filter from RSV4 Factory which allows a greater flow of air to the engine, giving a significantly better performance.



ADJUSTABLE LICENSE PLATE MOUNTING

cod. 895323 **STEEL**

In laser-cut steel. With white LED license plate light. Gives the bike a sleeker and sportier look. For track use only.



TOURING WINDSCREEN

cod. B044143 ONLY FOR APRC

It fits in a harmoniously and consistently with the lines of the vehicle. Complete with lid cover and support columns of aluminum billet. Easy to install, is DOT approved.



SELLA SPORT GEL

cod. B044750

The saddle is equipped with a gel insert that increases the feeling of the rider with his motorcycle, ensuring maximum comfort in all driving conditions.



STEERING DAMPER

cod. 894913 ÖHLINS

Öhlins steering damper for maximum performance on the road with true racing looks.



FRONT FORK KIT

cod. 896267 ÖHLINS

cod. 899328 ÖHLINS APRC

Includes Öhlins OEM front fork on RF version and the lower steering plate (the upper steering plate on the bike is already compatible with this Öhlins fork). Can be mounted without having to replace the existing brake disks, brake calipers and rims.



REAR SHOCK ABSORBER

cod. 895334 ÖHLINS RF

Öhlins rear shock absorber (OEM part on RF version), available as an accessory for the RR version. Maximum performance on the road.



REAR SHOCK ABSORBER

cod. 894912 ÖHLINS TTX36

Created especially for the RSV4. Fully adjustable. Equippable with linear sensors.



FRONT MUDGUARD KIT

cod. 895394 CARBON

Component from polished carbon fibre (with matte finish). Fits onto the standard calliper mounting brackets for sportier looks evocative of the Factory version.

Front mudguard for USA: cod. 896184



REAR MUDGUARD KIT

cod. 895395 CARBON

Component from polished carbon fibre (with matte finish). Fits onto the standard swingarm for sportier looks evocative of the RF version. Weight saving. Homologated for road use.

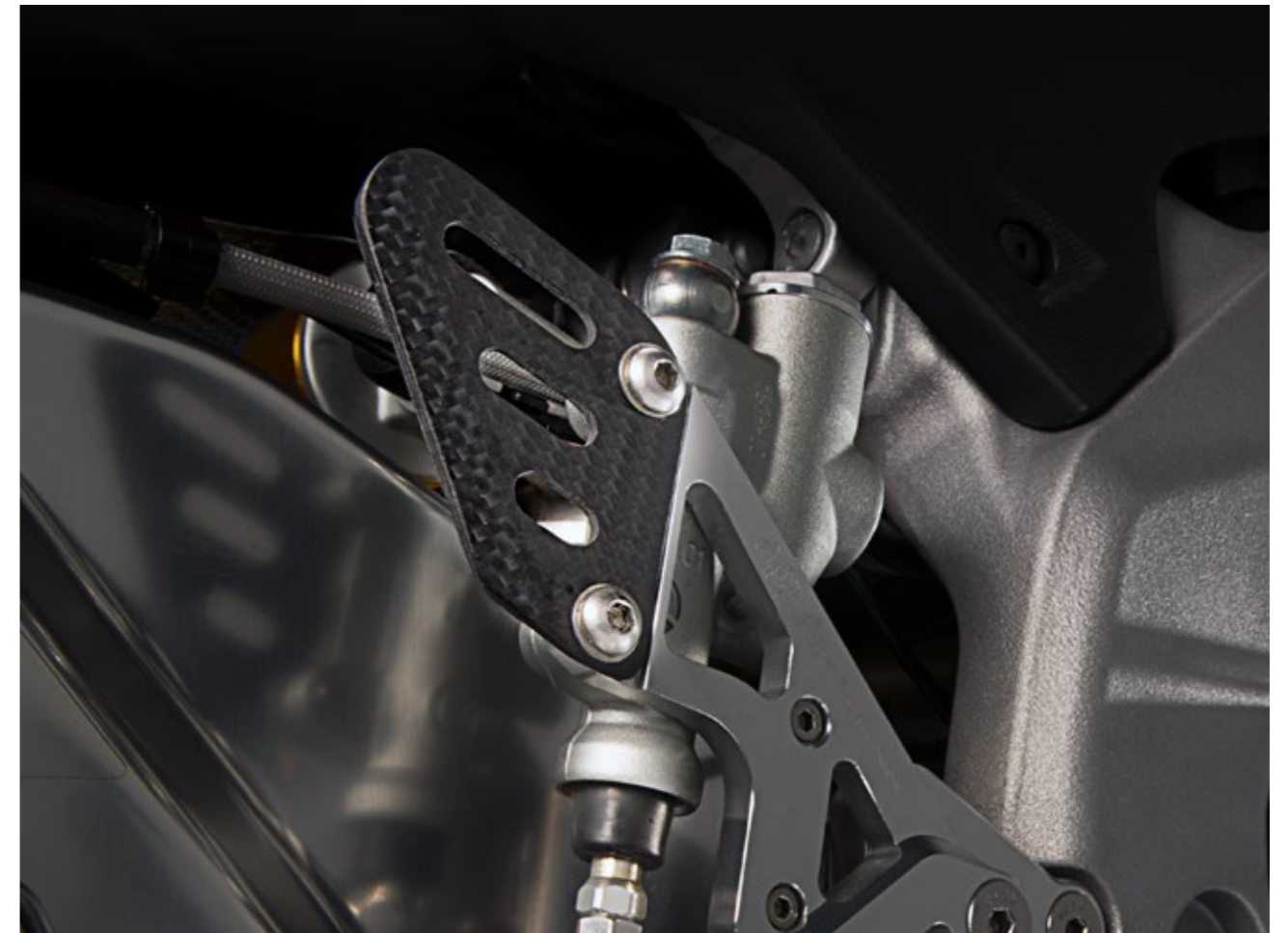


CARBON SIDE FAIRINGS KIT

cod. 895396 CARBON - RIGHT

cod. 895397 CARBON - LEFT

Component made from varnished (matte finish) carbon fibre. Used to replace the plastic side fairings to give the bike sportier looks evocative of the Factory version. Weight saving. Homologated for road use.



HEEL GUARD KIT

cod. 895318 CARBON

In 200g carbon fibre. Less weight and sportier looks. Also compatible with optional adjustable footpegs.



LED INDICATORS KIT

cod. 25000048 HOMOLOGATED

The LED indicator features lower consumption and higher brightness. Designed in collaboration with Aprilia style centre. Tested in-house in accordance with the most strict Aprilia quality standards.



TANK COVER

cod. B046054 **TECHNICAL FABRIC**

In technical fabric with carbon effect inserts. With fasteners for small and large tank bags. Tested, approved resistance to oil, fuel and UV light. Ensures ergonomics and stability even at higher speeds. Features a hole for refuelling without removing the cover. With contoured electrostatic tank protector.



TANK BAG

cod. 894868 **SMALL - TECHNICAL FABRIC**

cod. 897049 **LARGE - TECHNICAL FABRIC**

In technical fabric with carbon effect inserts. With fasteners for tank cover. Tested, approved resistance to oil, fuel and UV light. Ensures ergonomics and stability even at higher speeds. The small (3 litre) and large (9 litre) tank bags are secured to the tank cover with quick release buckles. With upper map pocket and rain hood. A handle and shoulder strap make the small bag easy to carry.



ROADLOK® DISC LOCK

cod. 898735

Roadlok® is an innovative disk lock and vehicle immobiliser antitheft device created to meet the requirements for security and an easy use. The lock is mounted permanently on the vehicle and impedes any movement of the vehicle itself eliminating the risk of damaging the bike if you forget to release the lock. Simple to use and practical, the only part removed is a pin inserted into the disc ventilation holes, solving the storage problem associated with regular disc locks due to the lack of space under the saddle and extremely secure. Can be used on: RSV4 RF, RSV4 RR, RSV4 Factory, RSV4 R, Tuono V4 R, Caponord 1200, Dorsoduro 1200.



SMARTPHONE MULTIMEDIA PLATFORM

cod. 2D000246 **V4-MP MULTIMEDIA PLATFORM**

cod. 2S000656 **INSTALLATION KIT**

cod. 2S000702 **USB SOCKET KIT**

Multimedia Platform is a new device which allows the vehicle to be easily connected to a Smartphone, transforming it into a true and proper on board computer, capable of managing all the information relative to the vehicle and information which can be useful for the trip. Designed in collaboration with Aprilia style centre. Tested in-house in accordance with the most strict Aprilia quality standards. Install kit required. USB socket kit also available.

For further info visit: www.aprilia.com



**CAPONORD 1200 /
TRAVELPACK / RALLY**

aprilia[®]





Euro3

SLIP-ON EXHAUST

cod. 2S000043 **HOMOLOGATED EURO 3**

Titanium slip-on silencer with carbon end-caps. Sporty looks, spine-tingling sound, maximum performance on the road Euro 3 compliant.

OPTIMIZER PERFORMANCE KIT

cod. 2S000161 **HOMOLOGATED EURO 3**

The Optimiser pack with the new ECU map offers better driving experience by maximizing the vehicle's performance in the middle RPM range. The engine runs smoother and the ride becomes easier, more fluid. The new map will fit every rider's style without losing the sporty spirit of the Caponord.



PERFORMANCE & STYLE KIT 01

cod. 2S000162 **CAPONORD / TRAVEL PACK**

Includes:

- 2S000161 Performance optimizer kit
- 899813 Clutch case protector
- 2S000048 LED indicators kit



PERFORMANCE & STYLE KIT 02

cod. 2S000163 **CAPONORD / TRAVEL PACK**

Includes:

- 2S000161 Performance optimizer kit
- 899813 Clutch case protector
- 2S000048 LED indicators kit
- 890471 Aluminium mirror LH
- 890272 Aluminium mirror RH
- 895394 Carbon front fender



PERFORMANCE & STYLE KIT PREMIUM

cod. 2S000164 **CAPONORD / TRAVEL PACK**

Includes:

- 2S000161 Performance optimizer kit
- 899813 Clutch case protector
- 2S000048 LED indicators kit
- 890471 Aluminium mirror LH
- 890272 Aluminium mirror RH
- 895394 Carbon front fender
- 2S000043 Arrow slip on exhaust



CAPONORD 1200 / TRAVELPACK / RALLY

TOP CASE 52 LT.

cod. 2S000291

cod. 2S000288

INSTALLATION KIT

Large top case which can accommodate two full face helmets. Quick release system. Anodized aluminum cover on the fibre glass reinforced shell. Requires installation kit 2S000288. Rally only.



aprilia®

REAR SADDLE BAG

cod. 2S000050

Further increases the load capacity of bike. Made of extra durable polyester and technical vinyl material. Attaches safely and quickly to the passenger seat.



INTERNAL BAGS FOR SIDE PANNIERS

cod. 605997M

PAIR - RALLY

Waterproof inner bags for the side panniers. Makes the content of the side panniers tidy. Easy to carry thanks to the shoulder strap. Rally only.



INTERNAL BAG FOR TOP CASE 52 LT

cod. 605996M

RALLY

Waterproof inner bag for the 52 Ltr top box. Makes the content of the top box tidy. Easy to carry thanks to the shoulder strap. Rally only.



CAPONORD 1200 / TRAVELPACK / RALLY

aprilia®

SIDE PANNIERS KIT

cod. CM257301 GREY

cod. CM257303 RED

cod. CM257302 WHITE

cod. CM257304 BLACK

ABS cases, painted in body color. Each case can hold a full-face helmet.
Have a total capacity of about 30 litres. Standard on TRAVEL PACK version.



TOP CASE 40 LT.

cod. CM257201 GREY

cod. CM257203 RED

cod. CM257202 WHITE

cod. CM257204 BLACK

Quick removing top case kit. Able to hold one fullface or flip-up helmet and gloves. Matching vehicle body paint cover. Has a comfortable passenger backrest finished the same saddle fabric finishing as saddle.



TANK COVER

cod. 25000054

Made of nylon and PVC. Allows you to mount dedicated tank bag.



TANK BAG

cod. 25000053

Expandable with practical pockets and a carry handle
Fastens onto tank cover with quick release clips and an adjustable fastener. Includes a rain hood.



COMFORT WINDSCREEN

cod. 25000065 RALLY

4mm thick elaxan sheet. Wider windscreen for ultimate protection.
Rally only.



SPORT GEL LOWER SEAT

cod. 2S000042

cod. 2S000495

RALLY ONLY

Low seat made with gel inserts for increased rider comfort thanks to its reduced height. Provides better support for the rider's feet on the ground.



RIDER COMFORT SADDLE

cod. 2S000041

PASSENGER

cod. 2S000040

RIDER

cod. 2S000496

PASSENGER - RALLY ONLY

cod. 2S000497

RIDER - RALLY ONLY

For those looking for the best driving comfort. Available for both rider and passenger. Made with a gel inserts. Saddles have the same height as the standard saddle.



APRILIA MULTIMEDIA PLATFORM

cod. 2D000246

cod. 2S000049

INSTALLATION KIT

Allows the vehicle to be connected to a smartphone, transforming it into a true and proper on board computer. Capable of managing all the information relative to the vehicle and useful for touring. The installation kit is needed.



LED INDICATORS KIT

cod. 25000048

HOMOLOGATED

Higher brightness and lower consumption are the main technical features. Look very elegant and perfectly coherent with the design of the vehicle.



CENTRAL STAND

cod. 2S000045

CAPONORD

cod. 2S000557

RALLY

The central stand is standard in the ADD version. Allows optimum stability on any terrain and in any time. Makes it easier to load the topcases and sidecases. Approved and original Aprilia accessory. Anti-oxidation surface treatment.





RACING LEVER KIT

cod. 2S000069

CLUTCH LEVER

cod. 2S000068

BRAKE LEVER

Billet aluminium DPM RACE levers. Adjustable in 4 options. Designed in collaboration with Aprilia style centre. Tested in-house in accordance with the most strict Aprilia quality standards. Track use only.



HEATED GRIPS KIT

cod. 2S000044

PAIR

Kit composed of a pair of heated grips complete with dedicated wiring.



ALUMINIUM MIRRORS

cod. 890471

LEFT

cod. 890272

RIGHT

Made of aluminum billet. Convex glass for excellent visibility.



ADJUSTABLE PLATE-HOLDER

cod. 2S000066

CAPONORD

cod. 2S000425

RALLY

Eye-catching design. Laser-cut steel accessory has an adjustable angle. Uses the original plate light. Includes mounting for original reflector. For track use only.

aprilia racing





CLUTCH & BRAKE RESERVIOR COVER

cod. 2S000076

CLUTCH OIL

cod. 2S000077

BRAKE OIL

Billet aluminium DPM RACE reservoir covers. Designed in collaboration with Aprilia style centre. Tested in-house in accordance with the most strict Aprilia quality standards. 1200; Travel Pack & Rally.



CRASH PADS KIT

cod. 2S000078

Machined from solid nylon. Aluminium mounting. 1200 & Travel Pack.



OIL PLUG

cod. 2S000276

Billet aluminium DPM RACE oil plug. It replaces the standard plug while improving the aesthetics of the vehicle. Designed in collaboration with Aprilia style centre. Tested in-house in accordance with the most strict Aprilia quality standards. 1200; Travel Pack & Rally.



REAR BRAKE FOOTPEG KIT

cod. 2S000275

Footpeg extension for the rear brake lever with protection for the clutch housing cover. Not compatible with 899813.



CLUTCH HOUSING GUARD KIT

cod. 899813

STAINLESS STEEL

Made from laser-cut stainless steel. Supplied with fastening hardware.



RIDER FOOTPEGS RACING KIT

cod. 890270

TRACK USE ONLY

Allow a more secure footing for the off road riding. For track use only.



PIVOT COVER

cod. 2S000277

Billet aluminium DPM RACE pivot cover. Designed in collaboration with Aprilia style centre. Tested in-house in accordance with the most stringent Aprilia quality standards. 1200; Travel Pack & Rally.

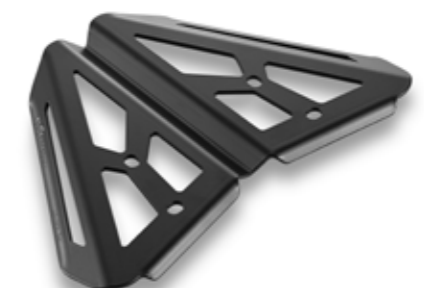


TAIL BAG SUPPORT

cod. 2S000274

RALLY

Laser cut aluminium DPM RACE tail bag support. Maximum load 3kg. Designed in collaboration with Aprilia style centre. Tested in-house in accordance with the most stringent Aprilia quality standards. Rally only.





GPS NAVIGATOR MOUNTING BRACKET

cod. 2S000286

Specific for Tom Tom Navigator. Includes bracket and mounting hardware.

BIKE COVER

cod. 2S000055

TECHNICAL MATERIAL

Protects the bike totally against dust, scratches and minor knocks. Made to measure with minute attention to details. Anti-static warp-knit fabric. Slightly elasticated.



ROADLOK® DISC LOCK

cod. 898735

Roadlok® is an innovative disk lock and vehicle immobiliser antitheft device created to meet the requirements for security and an easy use. The lock is mounted permanently on the vehicle and impedes any movement of the vehicle itself eliminating the risk of damaging the bike if you forget to release the lock. Simple to use and practical, the only part removed is a pin inserted into the disc ventilation holes, solving the storage problem associated with regular disc locks due to the lack of space under the saddle and extremely secure. Can be used on: RSV4 RF, RSV4 RR, RSV4 Factory, RSV4 R, Tuono V4 R, Caponord 1200, Dorsoduro 1200.



ELECTRONIC ANTI-THEFT SYSTEM APRILIA

cod. 2S000081

Electronic alarm system with electronic key. Supplied with two remote controls.



DORSODURO
750 / 750 FACTORY

aprilia[®]



DORSODURO 750 / 750 FACTORY

aprilia®

SLIP-ON EXHAUST KIT

cod. 890250 **E3 BY ARROW**

cod. 894942 **DB KILLER RACE BY ARROW**

Titanium silencers with carbon end-caps and steel headers for a total weight reduction of almost 7 Kg compared with the standard system. Sporty looks, spine-tingling sound, maximum performance on the road. Euro3 compliant. Even higher performance for track use achievable by removing the dBkiller devices or fitting the accessory dB Killer devices for track use. Installation without clamps for cleaner looks.

Euro3



DORSODURO 750 / 750 FACTORY

aprilia®

COMFORT SADDLE WITH GEL

cod. 890252

Saddle padded with gel and special material. Maximum grip for rider. Exposed stitching. Developed in collaboration with the Aprilia style centre. For the user who demands maximum comfort and style.



DORSODURO 750 / 750 FACTORY

LED INDICATORS KIT

cod. 25000048

HOMOLOGATED

Higher brightness and lower consumption are the main technical features. Look very elegant and perfectly coherent with the design of the vehicle.



ENGINE GUARD KIT

cod. 894085

Fastener pins in billet aluminium. Bumpers in machined nylon.



WHEEL AXLE CRASH PAD KIT

cod. 890259

PER PERNO RUOTA

The bumper kit reduces the possibility of damage to costly mechanical components (discs, front brake callipers, calliper mounting brackets, rear brake calliper) and allows the bike to be ridden safely again after a fall.





GOLD COLOURED CHAIN KIT

cod. 890255

For even better performance with new seal rings. The ideal choice for more demanding or extreme applications. Pins and plates in special steel alloy Bedding-in preload. Gold coloured links to further enhance the visual impact of the mechanicals.



SPROCKET IN HARD ANODISED ERGAL

cod. 890254

HOMOLOGATED Z = 46

cod. 894083

RACING Z = 47

cod. 894084

RACING Z = 48

In ergal. Manufactured to extremely high standards. Light and extremely strong. Recommended for a more professional biased use Dark grey. Compatible with standard or gold coloured chain .



FOOTPEG RUBBER KIT

cod. 890256

Greater comfort and a surer grip for the rider, especially when not wearing riding boots. These components offer an additional barrier against vibration transmission.



ALUMINIUM MIRRORS

cod. 890471

LEFT

cod. 890272

RIGHT

Accessory in billet aluminium. Friction mount adjuster screws for the optimum setting. Convex glass for optimum visibility. Designed in collaboration with Aprilia style centre. Tested in-house in accordance with the most stringent Aprilia quality standards.



RACING RIDER FOOTPEG KIT

cod. 890270

Offers rider a surer grip. For track use only.

aprilia racing

CLUTCH HOUSING GUARD KIT

cod. 894089

STAINLESS STEEL

Made from laser-cut stainless steel. Supplied with fastening hardware.

HANDGUARD KIT IN CARBON

cod. 894856

Component made from twill weave multilayer carbon fibre. Matte surface finish (polished and unpainted).



BRAKE LEVER CLUTCH LEVER

cod. 890257

BRAKE LEVER

cod. 890258

CLUTCH LEVER

Accessory in billet aluminium. For track use only.

aprilia racing



DORSODURO 750 / 750 FACTORY

aprilia®

TANK & CLUTCH OIL RESERVOIR COVER

cod. 890273 BRAKE OIL

cod. 890274 CLUTCH

Accessory in billet aluminium. For track use only.

aprilia racing



TANK COVER

cod. 894857

Made from nylon and PVC. With embroidered logos. Gives the Dorsoduro an even more aggressive look. Allows fitment of the dedicated tank bag, the special side bags or both.



TANK BAG

cod. 894858

Extensible. With practical pockets and a carry handle. Fastens onto tank cover with quick release clips and an adjustable fastener. Includes rain hood.



SIDE TANK BAGS KIT

cod. 894859

Matching with tank cover and easy to fasten thanks to high-strength zips. Ideal for further increasing load capacity. Waterproof cover also included.



SADDLE BAG KIT

cod. 894860

Innovative saddlebag consisting of a backpack that fastens onto a nylon base with side pockets. With shoulder straps. Once the backpack is removed and worn, the base remains fixed to the bike without compromising passenger comfort.



SEMI-RIGID PANNIER KIT

cod. 856955

Dynamic safety and maximum protection for your luggage. Made from technical Sky. Extremely simple to fit and fasten onto the lateral.

SEMI-RIGID PANNIER MOUNT KIT

cod. 890143

Maximum durability and practicality. Made in high strength material. Media blasted and cathaphoresis treated against corrosion and wear.



MOTORCYCLE COVER

cod. 894873

Protects the bike totally against dust, scratches and minor knocks. Made to measure entirely in Italy. Minute attention to detail. Antistatic, warp-knit fabric. Slightly elasticated.



PASSENGER GRAB-HANDLE KIT

cod. 890686

Made in metal and designed for maximum passenger ergonomics.



DORSODURO 1200 ABS

aprilia®



DORSODURO 1200 ABS

APRILIA BY ARROW HOMOLOGATED SLIP-ON EXHAUST KIT

cod. 899443

Titanium silencers with carbon end-caps and steel headers. Weight reduction of approximately 4.6 Kg compared with the standard system. Sporty looks. Spine-tingling sound. Maximum performance on the road. Euro3 compliant. Even higher performance for track use achievable by removing the dBkiller devices. Installation without clamps for cleaner looks.

Euro3



CLUTCH HOUSING GUARD KIT

cod. 899813

Made in laser-cut stainless steel. Supplied with fastener hardware.



MOTORCYCLE COVER

cod. 894873

Protects the bike totally against dust, scratches and minor knocks. Made to measure entirely in Italy. Minute attention to detail.



ENGINE GUARD KIT

cod. 894086

Fastener pins in billet aluminium. Bumpers in machined nylon.



WHEEL AXLE CRASH PAD KIT

cod. 890259

PER PERNO RUOTA

The bumper kit reduces the possibility of damage to costly mechanical components (discs, front brake callipers, calliper mounting brackets, rear brake calliper) and allows the bike to be ridden safely again after a fall.



HIGH FRONT MUDGUARD KIT IN CARBON

cod. 897593 **IN CARBON FIBER**

Component made from twill weave multilayer carbon fibre. Matte surface finish (polished and unpainted) Supplied with fastener hardware for installation, if necessary.



KIT TRASMISSIONE FINALE RACING

cod. 895408 **RACING CHAIN**

cod. 896164 **SPROCKET IN HARD ANODIZED ERGAL Z = 40**

cod. 896168 **PINION FOR RACING CHAIN Z = 16**

Racing final drive kit for Dorsoduro 1200 consisting of a Regina Racing ORNV6W chain with 520 pitch (as used by the major Superstock world championship teams), a hard anodised Ergal pinion with 40 teeth and a lightweight steel pinion with 16 teeth. For track use only. Installing these three components together reduces rotating masses (all components are lighter than their standard counterparts, while the whole kit saves weight by 850 g) and improves acceleration.

aprilia racing



! Attention: this combination requires the use of the 520 pitch racing chain - the sprocket and pinion cannot be used with the standard chain or in combinations with the standard sprocket and pinion.

! N.B.: it is recommended that the final drive components are replaced every 4000 Km or earlier if signs of excessive wear are noted (depending on riding style and conditions).

TANK COVER

cod. 899566

Made from nylon and PVC. With embroidered logos. Gives the Dorsoduro an even more aggressive look. Allows fitment of the dedicated tank bag, the special side bags or both.

TANK BAG

cod. 899567

Extensible. With practical pockets and a carry handle. Fastens onto tank cover with quick release clips and an adjustable fastener. Includes rain hood.

LATERAL TANK BAG KIT

cod. 899568

Usable with tank cover. Fastened with practical high-strength zips. Ideal for further increasing load capacity. Rain hood also included.

SADDLE BAG KIT

cod. 894860

Innovative saddlebag consisting of a backpack that fastens onto a nylon base with side pockets. With shoulder straps. Once the backpack is removed and worn, the base remains fixed to the bike without compromising passenger comfort.



SEMI-RIGID PANNIER KIT

cod. 856955

Dynamic safety and maximum protection for your luggage. Made from technical Skay. Extremely simple to fit and fasten onto the lateral mounts. Elegant and spacious with a total capacity of 42 litres. Equipped with reflectors to increase night visibility. Padlockable. Complete with rain hood.



SEMI-RIGID PANNIER MOUNT KIT

cod. 899370

Maximum durability and practicality. Made in high strength material. Media blasted and cathaphoresis treated against corrosion and wear.



ROADLOK® DISC LOCK

cod. 898735

Roadlok® is an innovative disk lock and vehicle immobiliser antitheft device created to meet the requirements for security and an easy use. The lock is mounted permanently on the vehicle and impedes any movement of the vehicle itself eliminating the risk of damaging the bike if you forget to release the lock. Simple to use and practical, the only part removed is a pin inserted into the disc ventilation holes, solving the storage problem associated with regular disc locks due to the lack of space under the saddle and extremely secure. Can be used on: RSV4 RF, RSV4 RR, RSV4 Factory, RSV4 R, Tuono V4 R, Caponord 1200, Dorsoduro 1200.



PASSENGER GRAB-HANDLE KIT

cod. 890686

Made in metal and designed for maximum passenger ergonomics.



ADJUSTABLE LICENSE PLATE MOUNTING KIT

cod. 899815

Accessory in laser-cut steel. Eye-catching design. Uses original licence plate light. Adjustable angle. Includes mounting for original reflector. For track use only.

aprilia racing



**SHIVER 750 ABS /
SHIVER GT 750**

aprilia®



SHIVER 750 / SHIVER GT 750

aprilia®

APRILIA BY AKRAPOVIC HOMOLOGATED SLIP-ON EXHAUST KIT

cod. 897816 FOR SHIVER 750

cod. 890249 FOR SHIVER GT 750

Titanium silencers with carbon end-caps and steel headers for a total weight reduction of over 4 Kg compared with the standard system. Sporty looks, spine-tingling sound, maximum performance on the road. Euro3 compliant. Even higher performance for track use achievable by removing the dBkiller devices or fitting the accessory dB Killer devices for track use. Stainless steel shield for undertail section. License plate mount in laser-cut steel.

Euro3



ENGINE GUARD KIT

cod. 894086

Fastener pins in billet aluminium. Bumpers in machined nylon.



STAND PIN KIT

cod. 897795 ALUMINIUM

In billet aluminium. Protective nylon crash pad Design with concealed fastener screw.



GOLD COLOURED CHAIN KIT

cod. 890649

For even better performance with new seal rings. The ideal choice for more demanding or extreme applications. Pins and plates in special steel alloy Bedding-in preload. Gold coloured links to further enhance the visual impact of the mechanicals.



SPROCKET IN HARD ANODIZED ERGAL

cod. 890584 HOMOLOGATED Z = 43

cod. 890585 HOMOLOGATED Z = 44

Street legal. Made in ergal. Manufactured to extremely high standards. Conceived for maximum riding fun. Light and extremely strong. Recommended for a more professional biased use. Dark grey. Available with two different toothings. Compatible with standard or gold coloured chain.



RACING RIDER FOOTPEG KIT

cod. 890276 RIDER

cod. 890275 PASSENGER

Accessory in billet aluminium. Ideal for track use. Raised by 16 mm. Set back by 12 mm. Designed in collaboration with the Aprilia style centre. Tested in-house in accordance with the most stringent Aprilia quality standards. For track use only.

aprilia racing



aprilia racing



MOTORCYCLE COVER

cod. 894875

Protects the bike totally against dust, scratches and minor knocks. Made to measure entirely in Italy. Minute attention to detail. Antistatic, warp-knit fabric. Slightly elasticated.



CENTRE STAND KIT

cod. 890099

In high tensile steel. Powder coated. For optimum vehicle stability. Homologated original Aprilia product. Fastener hardware kit included.



SHIVER 750 / SHIVER GT 750

APRILIA RACING accessories: intended solely for motorcycles for use on closed circuits and not for use on public roads for any other purpose.

aprilia racing



ALUMINIUM MIRRORS

cod. 890471 **LEFT**

cod. 890272 **RIGHT**

Accessory in billet aluminium. Friction mount adjuster screws for the optimum setting. Convex glass for optimum visibility. Designed in collaboration with Aprilia style centre. Tested in-house in accordance with the most stringent Aprilia quality standards.



RACING LEVER KIT

cod. 890257 **BRAKE LEVER**

cod. 890258 **CLUTCH LEVER**

Accessory in billet aluminium. For track use only.

aprilia racing



BRAKE FLUID TANK & CLUTCH OIL COVER

cod. 890273 **BRAKE OIL**

cod. 890274 **CLUTCH OIL**

Accessory in billet aluminium. For track use only.

aprilia racing



LED INDICATORS KIT

cod. 25000048

HOMOLOGATED

The LED indicator features lower consumption and higher brightness. Designed in collaboration with Aprilia style centre. Tested in-house in accordance with the most strict Aprilia quality standards.



HANDGUARD KIT

cod. 894088

SHIVER 750

Component made in high strength plastic. Matte surface finish (polished and unpainted).



ADJUSTABLE LICENSE PLATE MOUNTING KIT

cod. 890277

Accessory in laser-cut steel. Eye-catching design. Uses original licence plate light. Adjustable angle. Includes mounting for original reflector. For track use only.

aprilia racing



TANK BACKPACK

cod. 856952

A sturdy and versatile travel companion. Made from Skay technical fabric and extra-strong polyester. 14 litre capacity. Fits onto tank cover with 3 snap fasteners. Specially designed not to interfere with arm movement when riding or obstruct visibility of instrumentation. Easy to carry after removal with practical shoulder strap. With waterproof rain hood.



TANK COVER

cod. 856953

Total protection against scratches, fuel and the weather. Covers the tank perfectly. Fuel cap remains easily accessible. Exterior in Skay technical fabric and extra-strong polyester. Washable and reusable protective film in electrostatic PVC. Snap fasteners for fitting onto tank bag.





SEMI-RIGID PANNIER KIT

cod. 856955

Dynamic safety and maximum protection for your luggage. Made from technical Skay. Extremely simple to fit and fasten onto the lateral mounts. Elegant and spacious with a total capacity of 42 litres. Equipped with reflectors to increase night visibility. Padlockable. Complete with rain hood.



SEMI-RIGID PANNIER MOUNT KIT

cod. 858376

MY '07 - '09

cod. 897106

MY '10

Maximum durability and practicality. Made in high strength material. Media blasted and cataphoresis treated against corrosion and wear.



MANA GT 850

aprilia®



CITY 35 TOP BOX

cod. CM220401

Textured finish with quick release system. Practical handle for easy carrying. May also be fitted with interchangeable cover painted in same colour as vehicle. Spacious enough to easily accommodate two jet helmets. May be fitted with comfortable passenger backrest.

"SILVER LIKE" CITY 35 TOP BOX COVER

cod. CM220823 "SILVER LIKE"

Personalised cover for City 35. Painted in colour coded with vehicle frame. Elegant personalised Mana badge on rear. Extremely sophisticated.



LUGGAGE RACK KIT

cod. 858541

Maximum durability and practicality. Made in high strength material. Media blasted and cathodolysis treated against corrosion and wear.



CITY 35 TOP BOX BACKREST

cod. 852312

Comfortable passenger backrest. Makes journeys even more comfortable for passengers.



REAR SHOCK ABSORBER KIT

cod. 895414 AJUSTABLE

Shock absorber with separate canister. With fully adjustable compression and rebound. Improved riding comfort and wheel dynamics. Reduces possibility of losing contact with ground.



CENTRE STAND KIT

cod. 890100

In high tensile steel. Powder coated. For optimum vehicle stability. Homologated original Aprilia product. Fastener hardware kit included.



SRV 850

aprilia®



SRV 850

aprilia®

EXHAUST BY ARROW

cod. 605618M **EURO 3**

Titanium and carbon fiber silencer. Designed specifically for SRV850 by Arrow. Lighter than the original exhaust. Euro 3, EU approved for circulation on the road.

Euro3





TOURING WINDSCREEN

cod. 674933 **SMOKED**

Smoked touring windscreen. Made of high quality metachrilate (4mm thick). Ensures maximum protection and the best comfort.



GPS NAVIGATOR MOUNTING BRACKET

cod. 605608M **TOM TOM NAVIGATOR**

Specific for Tom Tom Navigator. Includes bracket and mounting hardware.



SCOOTER COVER

605293M001

Vehicle cover in black with openings for bulky accessories.



TOPCASE

6753100XN2

BLACK

67531000BM

WHITE

Quick release topcase kit. Able to contain one full-face helmet and a jet helmet with visor. Upper shell painted to match the vehicle's colour. Includes the passenger comfort backrest. Made with the same material and colour of the saddle.



CARBON LOOK MUDGUARD

605616M001

Carbonlook to enhance the scooter's sport spirit.

CARBON LOOK CHASSIS

605616M002

Carbonlook to enhance the scooter's sport spirit.



SRV 850

PAIR OF FOOTRESTS

cod. 675233 IN ALUMINIUM

Fit without modification, using hardware already on the vehicle
The aluminum footrests are perfectly integrated with the rubber mats (standard) thereby maintaining their anti-slip function.

LEG COVER

605576M006

Quick to assemble. Provides easy access to the ignition key. Maximum stability even at high speeds. Seat cover and integrated anti-theft system.



HANDLEBAR LOCK

605537M020

Simple and convenient anti-theft mechanical device. Links the handlebar to the vehicle through a fixing system fastened to the body. Convenient, clean, fast, safe, easy-to-use.



APRILIA ELECTRONIC ANTI-THEFT SYSTEM

602687M001

Electronic alarm system with electronic key. Supplied with two remote controls.



RS4 125 / RS4 50

aprilia®



EXTRA LARGE WINDSHIELD KIT

cod. 8948624

Taller windshield in 2 mm thick thermoformed polycarbonate. Smoked. For track use only.

aprilia racing



ADJUSTABLE LICENSE PLATE MOUNTING KIT

cod. 895323

cod. B044416

ADJUSTABLE LICENSE PLATE CABLE

In laser-cut steel. With white LED license plate light. Gives the bike a sleeker and sportier look. For track use only. Dedicated electric cable necessary for installation.

aprilia racing



CAP KIT FOR MIRROR MOUNT HOLES

cod. 895320

In billet aluminium. Permits removal of mirrors for track use. For track use only.

aprilia racing



LICENSE PLATE HOLE CAP KIT

cod. 895322

In laser-cut steel. Permits removal of license plate for track use. For track use only.

aprilia racing



REAR SEAT COVER

cod. B044354

Gives the opportunity to eliminate the passenger's seat and to transform the bike into single seat vehicle. With a back cushion for best rider's comfort.



QUICKSHIFT GEAR COMMAND

cod. B043827

Electronic system to better the gear shift, more precise and quick, skipping the use of the clutch lever.



aprilia®







APRILIA RACING TEAM GRESINI T-SHIRT

606435M01AR	SIZE	S
606435M02AR	SIZE	M
606435M03AR	SIZE	L
606435M04AR	SIZE	XL
606435M05AR	SIZE	XXL
606435M06AR	SIZE	XXXL

The official t-shirt from the 2016 team collection, a unique and exclusive design inspired by the RS-GP motorcycle. Made with technical and breathable fabric and enriched with sponsor logos.





APRILIA RACING TEAM GRESINI SHIRT

606431M01AR	SIZE	S
606431M02AR	SIZE	M
606431M03AR	SIZE	L
606431M04AR	SIZE	XL
606431M05AR	SIZE	XXL
606431M06AR	SIZE	XXXL

Official Aprilia Racing 2016 shirt. Made of T/C fabric, with official team's logos prints. Buttons tone on tone, plus a red one.



APRILIA RACING TEAM GRESINI BASEBALL CAP

606228M00AR

This cap is made of breathable mesh and finished in every details. High quality embroidery on the front side and metallic closure with the "a" of Aprilia Racing style.



APRILIA RACING TEAM GRESINI POLO

606434M01AR	SIZE	S
606434M02AR	SIZE	M
606434M03AR	SIZE	L

606434M04AR	SIZE	XL
606434M05AR	SIZE	XXL
606434M06AR	SIZE	XXXL

Official Aprilia Racing 2016 polo. Made of 100% piquet, 180 gr. Polyester, light technical and breathable fabric, with official team's logos prints.



aprilia®



TEAMWEAR APRILIA RACING

APRILIA RACING TEAM GRESINI SWEATSHIRT

606432M01AR	SIZE	S
606432M02AR	SIZE	M
606432M03AR	SIZE	L
606432M04AR	SIZE	XL
606432M05AR	SIZE	XXL
606432M06AR	SIZE	XXXL

Official Aprilia Racing 2016 sweatshirt with zipper. Made of Polyester, 280 gr. French Terry. Enriched with official team's logos printed.



APRILIA RACING TEAM GRESINI JACKET

606433M01AR	SIZE	S
606433M02AR	SIZE	M
606433M03AR	SIZE	L
606433M04AR	SIZE	XL
606433M05AR	SIZE	XXL
606433M06AR	SIZE	XXXL

Official Aprilia Racing 2016 hoodie jacket with zipper. Made of: 85% Polystretch, 14% Polyurethan and 1% Elastan. Microinjection zipper pullers, inner layer with pressed logo. Enriched with official team's logos printed.



aprilia
TEAM GREYNI

aprilia®

aprilia
RACING



aprilia
54
WORLD TITLES



HELMETS APRILIA

APRILIA TOP FULL FACE BLACK-WHITE-RED

606121M01FF	SIZE	XS	Shell in tri compound (Carbon, Kevlar, fiberglass) in three sizes. Internal removable and washable breathable fabric, treated ASP (Antimicrobial Sanitized Protection). Ventilation system ventilation system V.K.S. (Vemar Klima System): 2 upper adjustable aerators, 1 adjustable aerator on the chin completely recessed into the shell to avoid turbulence and garntire hiss and noise, 2 adjustable aerators above the visor 1 aerator back 2 rear side air vents. Visor injection molded polycarbonate mm thick. 2.2 anti-scratch and anti-fog. Strap with double ring.
606121M02FF	SIZE	S	
606121M03FF	SIZE	M	
606121M04FF	SIZE	L	
606121M05FF	SIZE	XL	



APRILIA BASIC BLACK-GREY

606122M01FFP	SIZE	XS	Shell in A.T.M. (Advanced Thermo Material) in two sizes. Internal removable and washable breathable fabric, treated ASP (Antimicrobial Sanitized Protection). Ventilation system ventilation system V.K.S. (Vemar Klima System): 2 upper adjustable aerators, 1 adjustable aerator on the chin, 1 adjustable aerator front, 2 rear vents. Visor injection molded polycarbonate mm thick. 2.2 with treatment resistant. Strap with micrometric closure.
606122M02FFP	SIZE	S	
606122M03FFP	SIZE	M	
606122M04FFP	SIZE	L	
606122M05FFP	SIZE	XL	



APRILIA MODULAR HELMET BLACK-GREY

606120M02M	SIZE	S	Shell in tri compound (Carbon, Kevlar, fiberglass) in two sizes. Internal removable and washable breathable fabric, treated ASP (Antimicrobial Sanitized Protection). Ventilation system ventilation system V.K.S. (Vemar Klima System): 1 upper adjustable aerator, 1 adjustable aerator on the chin guard, two side vents on the chin, two rear extractors. Visor injection molded polycarbonate mm thick. 2.2 anti-scratch and anti-fog with interior sunvisor. Strap with micrometric closure.
606120M03M	SIZE	M	
606120M04M	SIZE	L	
606120M05M	SIZE	XL	



aprilia®



T-SHIRT

605946M02W	SIZE	S
605946M03W	SIZE	M
605946M04W	SIZE	L
605946M05W	SIZE	XL
605946M06W	SIZE	XXL
605946M07W	SIZE	XXXL

White/black T-Shirt in 100% 160 gr. cotton, with red piping. Sleeves made of silver breathable polyester. Logo transfer. Italian flag on the back.



UMBRELLA

cod. 606168M

Sports umbrella with #be a racer logo and colors. Golf frame size. In aluminium. Automatic opening.



BASEBALL CAP

cod. 605948M

Black and silver baseball cap in breathable polyester. Red piping. Logo in silicone applied transfer.



SMARTPHONE COVER

cod. 606169M IPHONE 6 / SAMSUNG SV

Durable and practical smartphone cover with #be a racer logo available for I-Phone 6 and Samsung SV. Personalized packaging.



HEADPHONES

cod. 606171M

Small round container with earphones compatible with all mobile devices. With #be a racer logo and the colors. Blacks earphones with integrated volume control.



MUG

cod. 606177M

Black mug with #be a racer. Made of bone china. Simple design with handle and elegant box, ideal as a gift.



CUSTODIA PER TABLET

cod. 606173M

Tablet Case made of neoprene with printing #be a racer logo. Closure with metal zip in contrasting color. Dimensions: 19x25 cm. Personalized packaging.



POWERBANK

cod. 606175M

Powerbank is an external battery ideal for those who want to have an emergency refill always at hand. The design reproduces the throttle of the bike with a #be a racer logo. Dimensions: 9.4 cm.

Input 5V- 500mA - Output 5V - 1000mA



BEACH TOWEL

605885M00R

Beach towel with jacquard design, 150x100 cm, made of soft 100% high quality cotton toweling and yarn-dyed. Weight 450 gr/m. Top side in velor, rear side in toweling.



BANDANA

cod. 606176M

"Must have" article for motorcyclists made of polyester with #be a racer logo and graphics. It can have multiple uses: bandana, scarf, belt and many more other uses. Dimensions: 23 x 49 cm





