



2008 | ATV ACCESSORIES & APPAREL



Polaris builds the world's toughest ATVs. So it makes all the sense in the world that Pure Polaris ATV accessories also deliver the same high level of durability and reliability. Whether you want to boost your ATV's performance, add more storage and comfort, protect your ATV from tree branches and trail debris, or switch accessories in minutes with our exclusive Lock & Ride technology, stick with Pure Polaris. Unlike generic, aftermarket accessories, Pure Polaris accessories are designed specifically for Polaris ATVs. So you know they fit, they work and they last.





# 2008

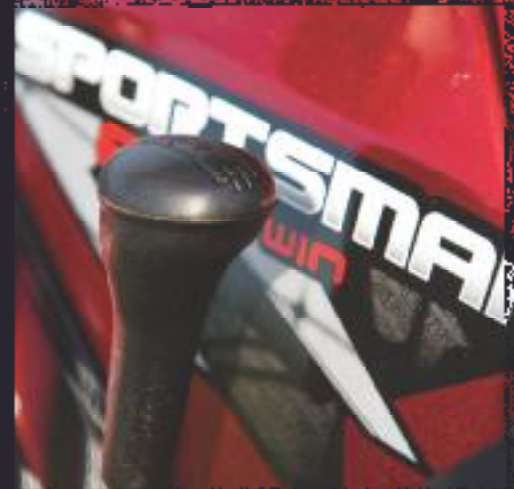
## ATV ACCESSORIES & APPAREL

### CONTENTS »

SPORTSMAN	4
HIGH PERFORMANCE	48
PHOENIX & SAWTOOTH	58
MAINTENANCE & GARAGE	62
APPAREL	72
FIT CHARTS	102



Power Items are high demand production products that are proven to yield the highest sales and turn rates



# SPORTSMAN

---

The Polaris Sportsman revolutionized the ATV. It was the first 4x4 with automatic transmission, independent rear suspension, single-lever braking, On-Demand true all-wheel drive and countless other features. It quickly became the best-selling ATV in the world. So it only makes sense to accessorize your Sportsman with genuine, Pure Polaris accessories. They are designed specifically for the Sportsman by the same engineers who designed the Sportsman in the first place. You bought the world's toughest ATV. Keep it that way with the world's toughest ATV accessories - Pure Polaris.





# SPORTSMAN *800 EFI*

MAKE THE EARTH MOVE. When you own The World's Toughest ATV, nothing gets in your way – because if you can't ride over it, you can always move it. Plowing with a Sportsman is so easy you can barely call it work. And you'll never confuse your Sportsman with someone else's. Not after you've customized it with Bodyguard and some trick aluminum rims. Best of all, Pure Polaris accessories are designed by the same guys who design your Sportsman, so you know they'll fit, they'll work and they'll last

Accessorize this machine

AS  
**LOW**  
AS

**\$79**/mo. US

With a Polaris Star Card.   
\*Refer to inside back cover.

#### Blue Xenon Headlight Bulbs

#2876464 | \$26.99 US \$32.99 CAN Page 47

#### Polaris 3500lb. Winch Kit

#2876494 | \$449.99 US \$499.99 CAN Page 16

#### Glacier II Plow System™

Glacier II Plow Frame

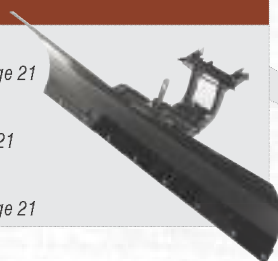
#2876150 | \$239.99 US \$279.99 CAN Page 21

Glacier II Mount Plate

#2876151 | \$79.99 US \$99.99 CAN Page 21

60" Razor Two-way Blade

#2875370 | \$239.99 US \$279.99 CAN Page 21




#### Accessorize your Polaris ATV online »

Log on to [www.polarisindustries.com/accessorizeyouratv](http://www.polarisindustries.com/accessorizeyouratv) and deck out your ATV with the best and proven accessories around. Once you've created the perfect machine for your needs, print out a summary of your configuration and bring it to a dealer to make your dream a reality.

**Lock & Ride Chrome Windshield 9.25"**   
#2875805 | \$99.99 us \$119.99 CAN Page 32

**Handguards**  
#2875709-177 | \$39.99 us \$53.99 CAN Page 37

**Lock & Ride Cargo Box**   
#2875176 | \$189.99 us \$229.99 CAN Page 33

**Cargo Pocket Bags**  
#2875372-070 | \$19.99 us \$29.99 CAN Page 33

**Spring Pre-Load Adjusters**   
#2876463 | \$79.99 us \$94.99 CAN Page 24

**14" Crusher Aluminum Rims with 26" Goodyear MTR Tires**  
#2876620 | \$849.99 us \$1,011.99 CAN Page 27 - Set of 4 Tires Mounted

**Sportsman Bodyguard™**  
Front Brushguard - Silver  
#2875599 | \$229.99 us \$269.99 CAN Page 39  
Front Rack Extender - Silver  
#2875604 | \$89.99 us \$129.99 CAN Page 39  
Left Fender Guard - Silver  
#2875601 | \$129.99 us \$159.99 CAN Page 39  
Right Fender Guard - Silver  
#2875602 | \$129.99 us \$159.99 CAN Page 39  
Rear Rack Extender - Silver  
#2875603 | \$99.99 us \$144.99 CAN Page 39  
Rear Brushguard - Silver  
#2875600 | \$149.99 us \$179.99 CAN Page 39



**Rear Rack Extender**

#2875216-418 | \$69.99 US \$99.99 CAN Page 40

**Kolpin Gun Scabbard**

#2872677 | \$59.99 US \$79.99 CAN Page 32

**Lock & Ride Semi Rigid Cargo Bag**

#2876663 | \$119.99 US \$136.99 CAN Page 33

**Lock & Ride Tall Windshield 19.25"**

#2876017 | \$119.99 US \$149.99 CAN Page 32



**Rear BrushGuard**

#2875174-418 | \$94.99 US \$124.99 CAN Page 40

**Lock & Ride Gun Scabbard Mount**

#2876276 | \$99.99 US \$114.99 CAN Page 32



**Prospector Pro™ - All Season Tracks**

Prospector Pro Track Kit

#2876664 | \$3,149.99 US \$3,699.99 CAN Page 19

Prospector Pro Mount Kit

#2876002 | \$349.99 US \$419.99 CAN Page 19

**Heavy-Duty Front Suspension Springs**

#2876153 | \$49.99 US \$59.99 CAN Page 24





# SPORTSMAN *500 EFI*

IT'S AN ANIMAL. When you own a Sportsman, you're riding The World's Toughest ATV. But that's just the beginning. Add protection with brushguards and a windshield. Boost storage with a semi-rigid cargo bag. Carry your firearm in a quick-attach gun boot. Yearning to put the crosshairs on a swamp buck? Slip on our all-new, all-season track system and go deep. Now that's one mean-looking, high-caliber 4x4.

## Front Rack Extender

#2875217-418 | \$69.99 us \$99.99 CAN Page 40

## Front Deluxe Brushguard

#2875173-418 | \$169.99 us \$199.99 CAN Page 40

## Polaris 2500lb. Winch Kit

#2875879 | \$399.99 us \$479.99 CAN Page 16

\*Prospector Pro Track Kit - Late Fall Availability

Accessorize this machine

AS  
**LOW**  
AS

\$119/mo. US

With a Polaris Star Card. 

\*Refer to inside back cover.

## Accessorize your Polaris ATV online

Log on to [www.polarisindustries.com/accessorizeyouratv](http://www.polarisindustries.com/accessorizeyouratv) and deck out your ATV with the best and proven accessories around. Once you've created the perfect machine for your needs, print out a summary of your configuration and bring it to a dealer to make your dream a reality.



# SPORTSMAN *300/400 HO*

TAKE YOUR MID-SIZE SPORTSMAN TO THE NEXT LEVEL. Our mid-size, Sportsman 400 HO has a lot of the same great features as our big-bore models. So it's only right that you can also accessorize it to work and play just like its big brother. You can plow with a mid-size Sportsman. You can also winch, carry your firearm out to the hunt and, with the right combination of rack extenders, bags and boxes, haul a boat load of gear out on the trail. Just want to customize? Check out the wide assortment of rims, brushguards and windshields.

Accessorize this machine

AS  
**LOW**  
AS

**\$54**/mo. US

With a Polaris Star Card.   
\*Refer to inside back cover.

#### Front Rack Extender

#2875680-418 | \$69.99 US \$94.99 CAN Page 41

#### Deluxe Front Brushguard

#2876637-418 | \$149.99 US \$169.99 CAN Page 41

#### Polaris 1500lb. Winch Kit

#2876639 | \$299.99 US \$339.99 CAN Page 16

#### Glacier II Plow System™

Glacier II Plow Frame  
#2876150 | \$239.99 US \$279.99 CAN Page 21

Glacier II Mount Plate  
#2876625 | \$69.99 US \$89.99 CAN Page 21

48" Snow/Dirt Blade  
#2874827 | \$139.99 US \$169.99 CAN Page 21

\*Glacier II Mount Plate - Late Fall Availability



#### Accessorize your Polaris ATV online »

Log on to [www.polarisindustries.com/accessorizeyouratv](http://www.polarisindustries.com/accessorizeyouratv) and deck out your ATV with the best and proven accessories around. Once you've created the perfect machine for your needs, print out a summary of your configuration and bring it to a dealer to make your dream a reality.

**Lock & Ride Tall Windshield 18.5"**

#2875682 | \$109.99 us \$129.99 CAN Page 32



**Lock & Ride Cargo Box**

#2875678 | \$159.99 us \$189.99 CAN Page 34



**Kolpin Mossy Oak® Gun Scabbard**

#2872677-419 | \$59.99 us \$79.99 CAN Page 32

**Rear Rack Extender**

#2875598-418 | \$69.99 us \$94.99 CAN Page 41

**Lock & Ride Gun Scabbard Mount**

#2875704 | \$89.99 us \$109.99 CAN Page 32



**12" Cast Aluminum Rims**

Front Rim - sold as each  
#2876086 | \$79.99 us \$99.99 CAN Page 29  
Rear Rim - sold as each  
#2876087 | \$84.99 us \$109.99 CAN Page 29

**Carlisle ACT Tires**

Front Tire - sold as each  
#2876084 | \$79.99 us \$99.99 CAN Page 28  
Rear Tire - sold as each  
#2876085 | \$89.99 us \$109.99 CAN Page 28



**Rear Rack Extender**

#2876486-418 | \$69.99 US \$79.99 CAN Page 40

**Backrest Backpack**

#2876856 | \$69.99 US \$79.99 CAN Page 36

**Driver Seat Heater**

#2876665 | \$149.99 US \$169.99 CAN Page 36

**Passenger Seat Heater**

#2876666 | \$149.99 US \$169.99 CAN Page 36

**Throttle Heater/Thumbwarmer**

#2874576 | \$41.99 US \$54.99 CAN Page 24

**Hand Warmers**

#2875344 | \$49.99 US \$69.99 CAN Page 24

**Spring Pre-Load Adjusters**

#2876463 | \$79.99 US \$94.99 CAN Page 24



# SPORTSMAN *TOURING*

THE TOUR STARTS HERE. Right off the showroom floor, our Sportsman Touring delivers class-leading two-up comfort. And with Pure Polaris accessories you can dial up the comfort, versatility and sheer ATV bling even further. Add seat heaters, hand warmers, a backpack and other Pure Polaris accessories, and you create the ultimate 2-up ATV for touring, trail riding, hunting and working.

## Front Rack Extender

#2875217-418 | \$69.99 us \$99.99 CAN Page 40

## Front Deluxe Brushguard

#2875173-418 | \$169.99 us \$199.99 CAN Page 40

## Polaris 3500lb. Winch Kit

#2876494 | \$449.99 us \$499.99 CAN Page 16

## Blue Xenon Headlight Bulbs

#2876464 | \$26.99 us \$32.99 CAN Page 47

Accessorize this machine

AS  
**LOW**  
AS | \$34 /mo. US  
With a Polaris Star Card.  
\*Refer to inside back cover. 

## Accessorize your Polaris ATV online »

Log on to [www.polarisindustries.com/accessorizeyouratv](http://www.polarisindustries.com/accessorizeyouratv) and deck out your ATV with the best and proven accessories around. Once you've created the perfect machine for your needs, print out a summary of your configuration and bring it to a dealer to make your dream a reality.



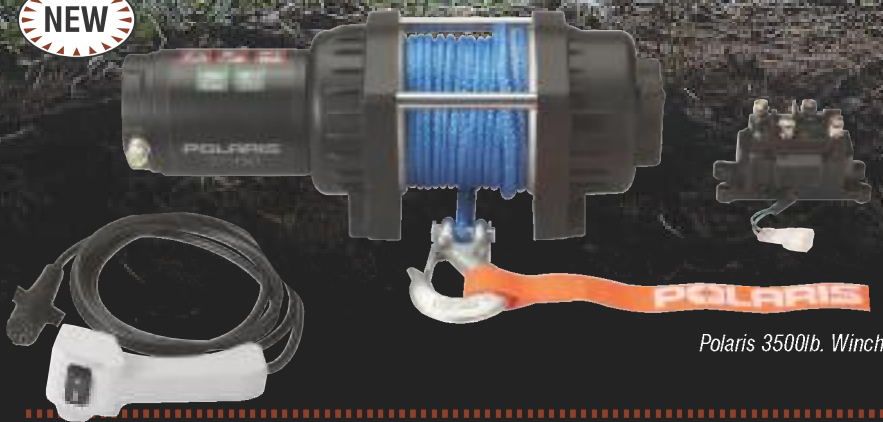
## POLARIS WINCHES

Polaris Winches are designed for Polaris ATVs. They're pre-wired and color-coded to correspond to wiring in our machine, so installing them is easier than anything else out there. Their high quality means they are built tough. And with as many jobs as you can do with your Polaris ATV, that number skyrockets when you add a heavy-duty Polaris winch. ■

# HEAVY DUTY, ALL QUALITY.

## INTRODUCING THE NEW POLARIS 3500 LB. WINCH.

**NEW**



*Polaris 3500lb. Winch*

- » 4,000 lb. plus of pulling power
- » Comes standard with synthetic rope
- » Cable/Rope spools from the top for better cable wear while plowing
- » Pre-wired for Polaris Sportsman models
- » Remote Rocker switch integrated into the thumb rocker switch
- » Includes a handheld remote

### WINCH IMPROVEMENTS

- » A more solid ground connection as spring rates and tolerances were adjusted
- » Created externally grounded coils and removed the spring ground – so that the winch is not relying on the spring for an electrical connection
- » Changed to a moving copper pad that is double forged for no burrs giving the winch a solid electrical connection
- » Flared the end of the copper sleeve for armature so there is less friction
- » Silver plating thickness increased from 1um to 8um for an improved electrical connection
- » Waterproof seal material changed from rubber to silica gel
- » Increased strength of brake coupler components 30% due to thicker cogs
- » For more efficient gear power transfer the gearing was modified
- » Added dimples to the contact pads for a solid electrical connection.

## WINCH USES:

USE 1: RESCUE A FRIEND

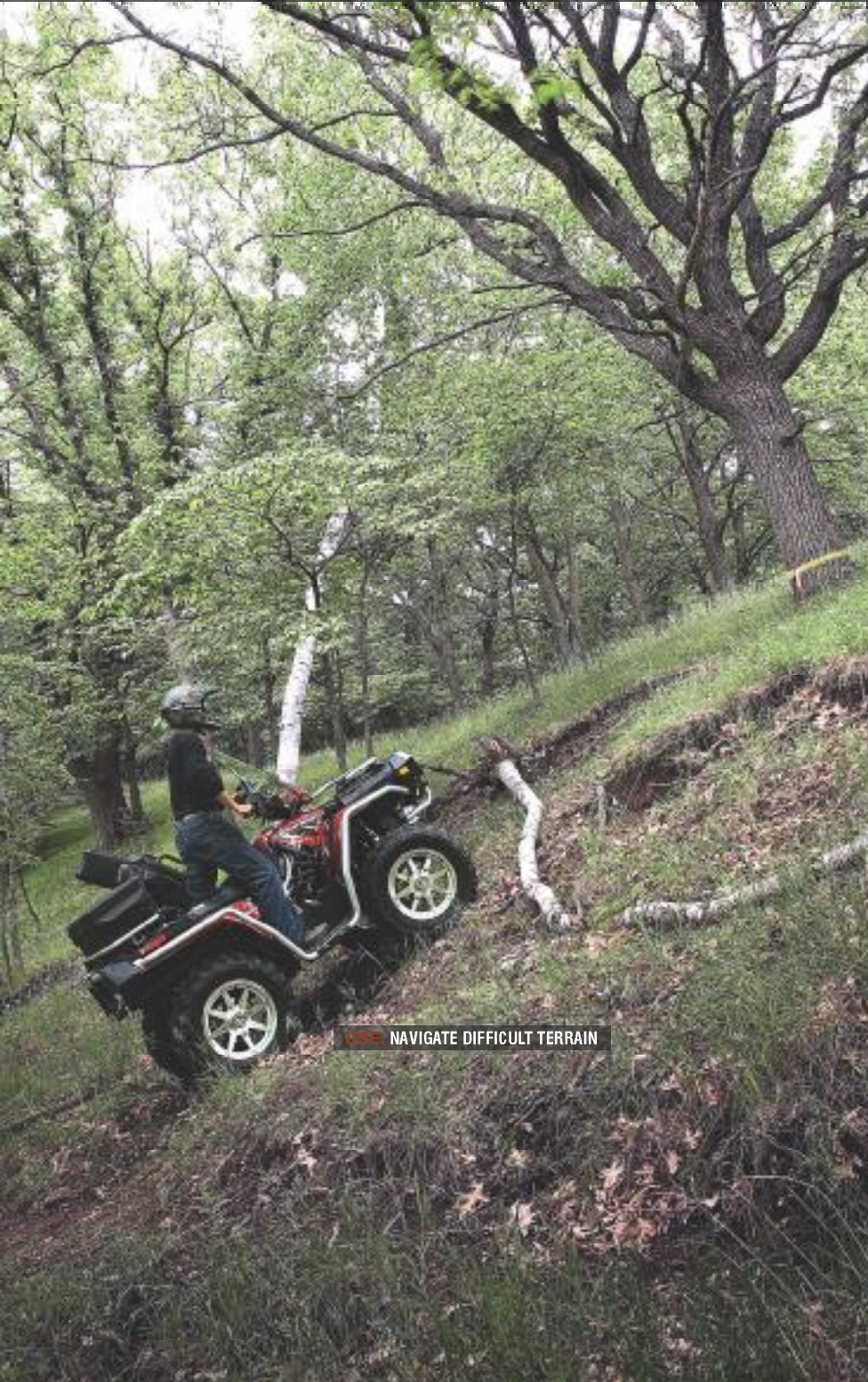
USE 2: SELF RESCUE

USE 3: CLEARING A TRAIL

USE 4: HAULING OUT A DOCK

USE 5: PLOW LIFT

USE 6: NAVIGATE DIFFICULT TERRAIN



USE 6: NAVIGATE DIFFICULT TERRAIN



USE 1: RESCUE A FRIEND



USE 2: SELF RESCUE



USE 3: CLEARING A TRAIL



USE 4: HAULING OUT A DOCK



USE 5: PLOW LIFT



**Polaris 3500 lb. Winch Kit »**

Designed and tested by Polaris engineers, it's the most powerful winch available for Polaris ATVs and this year it's better than ever. New features include a 50' synthetic rope made of 3/16" blue Amsteel, a second hand-held remote control, a new 166:1 gear ratio, zinc-alloy outer housing, 1st stage gears that are stamped, not powdered metal, and an updated contactor. This power winch also features a 1.2hp motor and a 3500 lb.- rated pull, adding incredible versatility. Includes roller fairlead, hook and red strap.

#2876494 | Polaris 3500 lb. Winch Kit

\$449.99 us \$499.99 CAN  
MODEL: Sportsman MY 05-08 & Sportsman X2



**Polaris 2500 lb. Winch Kit »**

We designed our new 2500 lb. capacity winch with all the same quality features as after market winches – minus the price tag. This year, we made it even better with a long list of improvements that create more solid electrical connections, fewer moving parts, less friction, stronger braking, more efficient power transfer and less noise. This rugged Polaris winch features factory-installed, color-coded wiring; a handlebar switch; a high quality, permanent magnet motor; a roller fairlead for less cable wear; a mechanical, dynamic brake, plus a cam-action that disengages the gear system for free-spooling.

#2875879 | Polaris 2500 lb. Winch Kit

\$399.99 us \$479.99 CAN | MODEL: Sportsman MY 05-08, Sportsman X2, Sportsman 300/400 HO



**Polaris 1500 lb. Winch Kit »**

This winch is not one size fits all, it's one size fits Sportsman 300/400 HO and Hawkeye, because it's mount plate is designed to their exact specs. This powerful winch has the same great performance and quality as others we carry, but is more compact to fit the mid-sized ATVs. Handlebar mounted rocker switch and roller fairlead included. 1.5ci 1,500 lb. capacity.

#2876639 | Polaris 1500 lb. Winch Kit

\$299.99 us \$349.99 CAN  
MODEL: Sportsman 400 HO MY 08

#2875880 | Polaris 1500 lb. Winch Kit

\$299.99 us \$349.99 CAN  
MODEL: Sportsman 300 MY 08, Hawkeye MY 06-07



**Versawinch™ »**

You'll find 101 uses for this incredible combination winch and power source. Use it as a portable winch to pull anything and everything. The attached 20 Amp-hour, sealed, rechargeable battery that powers the winch also powers jumper cables for starting any vehicle quick and easy. The 12-volt outlet lets you charge cell phones and power TVs, air compressors and other appliances. Also features a light, remote winch cable and case. Perfect for anyone who works, hunts or plays outdoors.

#2875878 | Versawinch™

\$349.99 us \$399.99 CAN  
MODEL: All models, All years



**Warn® RT 30 / Warn® 2.5ci Winch Kits »**

Designed exclusively for the Polaris Sportsman, it gives you rugged pulling power. It features a convenient handlebar switch, custom designed wiring and a roller fairlead for smooth operation, less cable wear and longer cable life. Choose from two motor sizes – the 2.5ci with 2,500 lb. capacity or the 3.0ci with 3,000 lb. capacity.

#2876819 | Polaris Warn® RT 30 Winch Kit

\$599.99 us \$689.99 CAN  
MODEL: Sportsman MY 05-08 & Sportsman X2  
[Hand-held remote control included]

#2875952 | 2.5ci Polaris Warn® Winch Kit

\$499.99 us \$579.99 CAN  
MODEL: Sportsman MY 05-08 & Sportsman X2

**WINCH ACCESSORIES**

#5436991-070 | 2.5 Winch Cut-Out Panel

\$8.39 us \$10.50 CAN

#2876105 | Winch Accessory Kit

\$69.99 us \$89.99 CAN  
[Contains: tow strap, shackle, snatch block, carry bag]

#2873215 | Hook with Latch

\$17.99 us \$24.99 CAN

#2871462 | Roller Fairlead

\$39.99 us \$59.99 CAN

#2874803 | 2.5 Winch Mount for Brush Guard

\$89.99 us \$119.99 CAN  
MODEL: Gen IV

#2875791 | Winch Rope - Synthetic 50'

\$49.99 us \$64.99 CAN

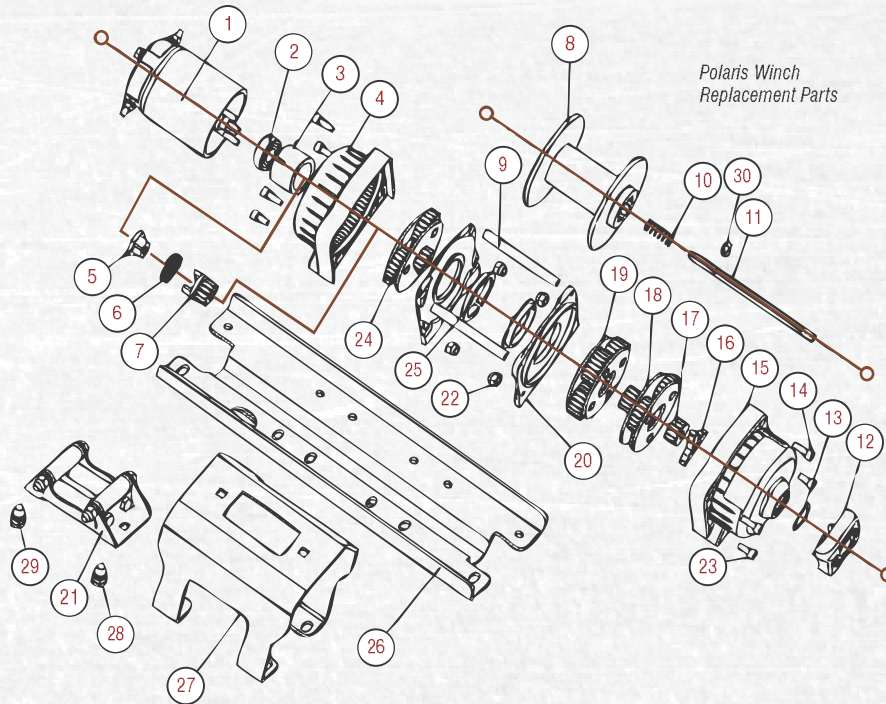


SYNTHETIC WINCH ROPE

[For use with all Polaris or Polaris Warn® winches. Adds durability and safety especially when lifting a plow. 3/16" x 50']







### Polaris Winch Kit Replacement Parts

#2875994	Mount Kit	\$69.99 us \$84.99 CAN	MODEL: Sportsman MY 05-08
#2876657	Replacement Contactor	\$99.99 us \$119.99 CAN	
#2875957	Replacement Mini-Rocker Switch	\$19.99 us \$23.99 CAN	[includes z-bracket]
#2875996	Wire Kit - 6 gauge		
#2875997	Roller Fairlead		
#2876000	Replacement Cable (50')	\$29.99 us \$35.99 CAN	
#2875998	Hook and Latch Kit		
#2875999	Kit Relay	\$9.99 us \$11.99 CAN	[for 500 lb winch]
#2875958	Wire Harness	\$59.99 us \$74.99 CAN	[For 500 lb winch wiring without relay]

### Polaris 2500 lb. Winch Replacement Parts

#	Qty.	Replacement Part	Part #	US	CAN
1	1	ASM - Motor	#2876774	\$79.99	\$92.99
2	1	Bearing - Winch Motor	#2876775	\$4.99	\$5.99
3	1	Bushing - Winch Motor	#2876776	\$3.99	\$4.99
4	1	Casting - Winch, Motor End	#2876777	\$19.99	\$22.99
5	1	Coupling - Brake, Motor	#2876778	\$1.99	\$2.49
6	1	Lining - Brake	#2876779	\$2.49	\$2.99
7	1	Coupling - Brake, Gear	#2876780	\$3.99	\$4.99
8	1	Spool	#2876781	\$19.99	\$22.99
9	3	Rod - Connecting	#2876782	\$2.99	\$3.99
10	1	Spring - Freespool	#2876783	\$1.49	\$1.99
11	1	Shaft - Hex	#2876784	\$1.99	\$2.49
12	1	Knob - Freespool	#2876785	\$2.49	\$2.99
13	1	Clip - Spring	#2876786	\$1.29	\$1.99
14	6	Bolt - Long	#2876787	\$1.29	\$1.99
15	1	Casting - Winch, FS End	#2876788	\$44.99	\$49.99
16	1	Slider Freespool	#2876789	\$1.49	\$1.99
17	1	Gear - Bull	#2876790	\$1.99	\$2.49
18	1	Gearset - Planetary 3	#2876791	\$14.99	\$17.49
19	1	Gearset - Planetary 2	#2876792	\$14.99	\$17.49
20	2	Bracket - Support	#2876793	\$6.99	\$7.99
21	1	Fairlead - Roller	#2876794	\$12.99	\$14.99
22	2	Nut - Nylock	#2876795	\$.99	\$1.49
23	2	Bolt - Short	#2876796	\$.99	\$1.49
24	1	Gearset - Planetary 1	#2876797	\$9.99	\$11.99
25	2	Bushing - Spool	#2876798	\$1.49	\$2.49
26	1	Plate - Winch Mount	#2876799	\$19.99	\$22.99
27	1	Bracket - Clamshell	#2876800	\$19.99	\$22.99
28	2	Bolt - Carriage	#2876801	\$1.49	\$1.99
29	2	Nut - Nylock	#2876802	\$1.29	\$1.99
30	1	Clip - Retainer	#2876803	\$.99	\$1.49

### Polaris 3500 lb. Winch Replacement Parts

#	Qty.	Replacement Part	Part #	US	CAN
1	1	ASM - Motor	#2876805	119.99	134.99
2	1	Bearing - Winch Motor	#2876775	\$4.99	\$5.99
3	1	Bushing - Winch Motor	#2876776	\$3.99	\$4.99
4	1	Casting - Winch, Motor End	#2876806	\$19.99	\$22.99
5	1	Coupling - Brake, Motor	#2876778	\$1.99	\$2.49
6	1	Lining - Brake	#2876779	\$2.49	\$2.99
7	1	Coupling - Brake, Gear	#2876780	\$3.99	\$4.99
8	1	Spool	#2876781	\$19.99	\$22.99
9	3	Rod - Connecting	#2876782	\$2.99	\$3.99
10	1	Spring - Freespool	#2876783	\$1.49	\$1.99
11	1	Shaft - Hex	#2876784	\$1.99	\$2.49
12	1	Knob - Freespool	#2876785	\$2.49	\$2.99
13	1	Clip - Spring	#2876786	\$1.29	\$1.99
14	6	Bolt - Long	#2876787	\$1.29	\$1.99
15	1	Casting - Winch, FS End	#2876807	\$44.99	\$49.99
16	1	Slider Freespool	#2876789	\$1.49	\$1.99
17	1	Gear - Bull	#2876808	\$1.99	\$2.49
18	1	Gearset - Planetary 3	#2876809	\$14.99	\$17.49
19	1	Gearset - Planetary 2	#2876810	\$14.99	\$17.49
20	2	Bracket - Support	#2876793	\$6.99	\$7.99
21	1	Fairlead - Roller	#2876794	\$12.99	\$14.99
22	2	Nut - Nylock	#2876795	\$.99	\$1.49
23	2	Bolt - Short	#2876796	\$.99	\$1.49
24	1	Gearset - Planetary 1	#2876811	\$14.99	\$17.49
25	2	Bushing - Spool	#2876798	\$1.49	\$2.49
26	1	Plate - Winch Mount	#2876799	\$19.99	\$22.99
27	1	Bracket - Clamshell	#2876800	\$19.99	\$22.99
28	2	Bolt - Carriage	#2876801	\$1.49	\$1.99
29	2	Nut - Nylock	#2876802	\$1.29	\$1.99
30	1	Clip - Retainer	#2876803	\$.99	\$1.49

# GEARED FOR ALL FOUR SEASONS.

THE NEW PROSPECTOR PRO TRACKS.



## TOP FIVE REASONS TO OWN A PROSPECTOR PRO TRACK SYSTEM

1. Specifically engineered for Polaris vehicles.
2. Steering is easy, in mud, boggy terrain or snow, for longer rides with less fatigue.
3. Large sprockets power the track with an internal drive system that delivers superior power transfer, traction and flotation, longer wear and less maintenance.
4. Prospector Pro lets you keep the power on, reaching speeds of 70% to 80% of the vehicle's top speed with wheels.
5. It has a large rear footprint for incredible traction, and large-diameter corner wheels to increase the angle of attack and easily clear obstacles.

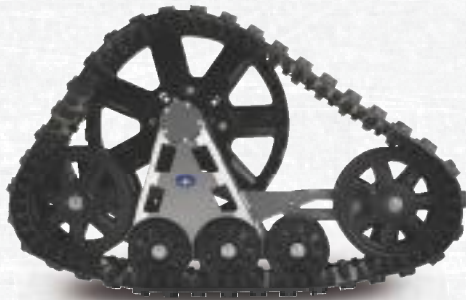
## WHO NEEDS A PROSPECTOR PRO TRACK?

- » Anyone who uses an ATV in extremely wet terrain such as deep mud, swamps and bogs, or in snow.
- » Anyone who uses an ATV year-round for commercial applications in extreme terrain, such as farmers, ranchers, resorts, electric companies, contractors, or search and rescue.
- » Anyone who wants the ultimate in traction to go virtually anywhere, in any season, with power, easy handling and good top speed.

### PROSPECTOR PRO TRACKS

Introducing the Prospector Pro is built by Polaris specifically for the Polaris Sportsman. Unlike some aftermarket tracks, it delivers exact fit and mounting to maximize the life of both the track system and the machine. Installation is easy. Best of all, top speed is up to 70 to 80% of the vehicle's top speed with wheels. ■





### FEATURES:

- » True all-season capable
- » Easiest Steering in the industry
- » Large corner wheels for superior approach angles
- » Optimized gearing to enhance Polaris true AWD
- » Spring loaded anti-rotation
- » Fits Polaris Sportsman, Sportsman X2 & Touring

### Prospector Pro Track Kits »

To outfit your Sportsman ATV with the ultimate all-season track system, you'll need the Prospector Pro Track Kit and the Prospector Track Mount Kit that fits the model year of your Sportsman.

#2876664 | Prospector Pro Track Kit

\$3,149.99 us \$3,699.99 CAN | Set of 4 Tracks  
MODEL: Sportsman MY 05-08, Sportsman X2 & Touring

#2876659 | Prospector Track Mount Kit

\$349.99 us \$419.99 CAN  
MODEL: Sportsman X2 & Touring MY 08

#2876002 | Prospector Track Mount Kit

\$349.99 us \$419.99 CAN  
MODEL: Sportsman MY 05-08

#2875884 | Prospector Track Mount Kit


\$349.99 us \$419.99 CAN  
MODEL: Sportsman X2 MY 06-07



\*Late Fall 2007 Availability

For Service Parts See Prospector Pro Instructions Sheet

### HOW PROSPECTOR PRO STACKS UP

FEATURES:		TATOU 4S	MATTRACKS	CAT TRAXXI	TJD X-GEN
Use in any season, in any condition without the fear of wearing down your tracks like other brands.	✓	✓	✓	⊘	⊘
Greasable hub necessary for mud usage.	✓	⊘	⊘	⊘	⊘
Large diameter drive socket for great speed, without compromising stability and ground clearance. Power comes from the engine, without over revving.	✓	⊘	⊘	⊘	⊘
Track is designed for all conditions, including snow.	✓	✓	⊘	⊘	⊘
Perfectly designed approach angle for maximizing climbing over large objects.	✓	⊘	⊘	⊘	✓
Internal drive system increases floatation, provides less maintenance and is true all-season performance.	✓	✓	✓	⊘	⊘
Optimize front and rear sprocket ratio for Polaris true AWD system.	✓	⊘	⊘	⊘	⊘
One track fits all Polaris Sportsmans optimizing fitment and performance, without sacrificing strength.	✓	⊘	⊘	⊘	⊘

## POLARIS PLOW SYSTEMS

Nothing else in the industry compares to Polaris Plow Systems for quality and ease of installation and operation. Our exclusive Lock & Ride Glacier I and Glacier II Plows install in forty-seconds or less without tools (after the initial install of the mount) – faster by far than any other plow out there. Our Universal Plow Systems are designed so installation takes only a few minutes. Once installed, whether they are winch-operated or electric-lift operated, all our plows are operated from the driver seat. And to top it off, our plow systems are designed to integrate seamlessly with our Sportsman ATVs. ■



**GET DOWN TO BUSINESS.**  
POLARIS PLOWS INSTALL QUICKLY AND EASILY  
WITH LOCK & RIDE GETTING THE JOB DONE.



### GLACIER II PLOW SYSTEMS THE FASTEST INSTALL AROUND.



1. ALIGN FRAME BLADE TO PLOW MOUNT



2. SLIDE BLADE AND FRAME INTO MOUNT



3. ATTACH LIFT CABLE AND LIFT THE PLOW INTO PLACE

**INSTALL IN 5**  
SEC.

#### CHECK IT OUT ONLINE.

Log on to [www.polarisindustries.com/accessorizeyouratv](http://www.polarisindustries.com/accessorizeyouratv) and check out videos of this product and others while customizing a Polaris ATV of your design.

FEATURES:	Lock & Ride Technology	Initial Install Time	Attachment Time After Installation	Blade Lift Height	Blade Angle Adjustment	Plow System Weight	Frame Length	Price (Frame & Mount Plate)
GLACIER II PLOW SYSTEM	Yes	Less than 30 minutes	5 seconds	20" +	35°	Snow & Dirt	22" +	\$319.99 us \$379.99 us
GLACIER I PLOW SYSTEM	Yes	Less than 30 minutes	10 seconds	13" +	35°	Snow & Dirt	40" +	\$369.99 us \$429.99 us
UNIVERSAL PLOW SYSTEM	No	Approximately 1 Hour	3-5 minutes	12" +	35°	Snow	40" +	\$269.99 us \$359.99 us



## PLOW BLADES



A. 48", 52", 60" Blades



B. Razor 60" Two-way Blade



C. 56" One-way Blade

**Glacier II Plow System »**

This plow system incorporates Lock & Ride technology for the fastest on/off capability, the easiest maneuverability, and the greatest versatility and range of motion of any plow system on the market. We've refined the technology so it still installs in seconds. It has a 20"+ blade lift height, but is 36 lbs. lighter and stores easier than the original Glacier. Food for thought the next time you spend four hours shoveling.

**» STEP 1: Select a Frame**

#2876150 | Glacier II Plow Frame

\$239.99 us \$279.99 CAN

MODEL: All Sportsman MY 05-08, Hawkeye MY 06-07

**» STEP 2: Select a Mount Plate**

Our mount plates are designed exclusively for Sportsman models, not a "generic fit" design like our competitors.

#2876151 | Glacier II Mount Plate

\$79.99 us \$99.99 CAN

MODEL: All Sportsman MY 05-08 [except MV]

#2876625 | Glacier II Mount Plate\*

\$69.99 us \$89.99 CAN

MODEL: Sportsman 300/400 HO MY 08, Hawkeye MY 06-07

\*Late Fall Availability

**» STEP 3: Select a Lift Method**

Choose a Polaris winch, Polaris Warn® winch or an electric lift. Sportsman ATVs come with factory installed wiring for all Polaris and Polaris Warn® winch kits for fast installation. All winch kits come pre-wired and are only available from Polaris. (Additional winch information pg. 16)

#2876494 | Polaris 3500 lb. Winch

\$449.99 us \$499.99 CAN

MODEL: All Sportsman MY 05-08

#2875879 | Polaris 2500 lb. Winch

\$399.99 us \$479.99 CAN

MODEL: All Sportsman MY 05-08

#2876639 | Polaris 1500 lb. Winch Kit

\$299.99 us \$349.99 CAN

MODEL: Sportsman 400 HO MY 08

#2875880 | Polaris 1500 lb. Winch Kit

\$299.99 us \$349.99 CAN

MODEL: Sportsman 300 MY 08, Hawkeye MY 06-07

#2876819 | Polaris Warn® RT 30 Winch Kit

\$599.99 us \$689.99 CAN

MODEL: All Sportsman MY 05-08

#2875952 | Polaris Warn® 2.5 ci Winch Kit

\$499.99 us \$579.99 CAN

MODEL: All Sportsman MY 05-08

#2875881 | 500 lb. Plow lift

\$159.99 us \$199.99 CAN | Must Order #2874664

#2874664 | Winch Mount and Strap Kit

\$34.99 us \$45.99 CAN | Required for #2875881

**» STEP 4: Select a Plow Blade**

Select a blade from our variety of sizes and capabilities, each with Polaris engineering for a perfect fit. Our blades fit all our plow frames.

**A. Snow Blades**

#2874827 | 48" Snow/Dirt Blade

\$139.99 us \$169.99 CAN

#2875342 | 52" Snow Blade

\$144.99 us \$179.99 CAN

#2874929 | 60" Snow Blade

\$169.99 us \$199.99 CAN

**B. 60" Razor Two-way Blade**

A dual one-way blade.

#2875370 | 60" Razor Two-way Blade

\$239.99 us \$279.99 CAN

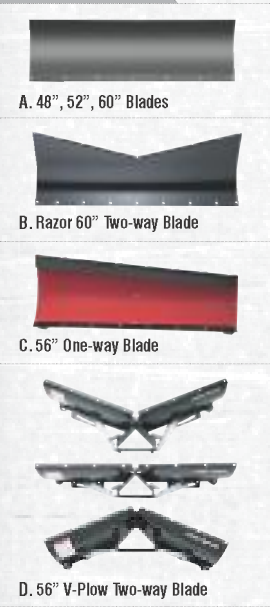
**C. 56" One-way Blade with Snow Deflectors**

This durable plow is fashioned out of hardened, powder-coated steel and engineered at the perfect angle to throw snow up and over tall snow banks.

#2872684 | 56" One-way Blade w/ Deflectors

\$249.99 us \$289.99 CAN

PLOW BLADES



INSTALL IN 10  
SEC.



Lift to lock in place.

Attach power cord and winch cable.

Drive ATV into plow setup.



Glacier I Plow System »

» **STEP 1:** Select a Frame

---

**#2874771** | Glacier I Plow Frame  
**\$269.99 us \$309.99 CAN**  
 MODEL: All Sportsman MY 08-prior

» **STEP 2:** Select a Mount Plate

Our mount plates are designed exclusively for Sportsman models, not a "generic fit" design like our competitors.

---

**#2874774** | Glacier I Mount Plate  
**\$99.99 us \$119.99 CAN**  
 MODEL: Sportsman Gen VI 400/500, Sportsman MY 08-07 single cylinder engines  
 [Needed for Sportsman X2 Mount Adaptor **#2876020**]

---

**#2874773** | Glacier I Mount Plate  
**\$99.99 us \$119.99 CAN**  
 MODEL: Sportsman Gen VI, Gen IV+, Sportsman MY 05-08 twin cylinder engines

---

**#2875443** | Glacier I Mount Plate  
**\$119.99 us \$149.99 CAN**  
 MODEL: MV only

---

**#2874775** | Glacier I Mount Plate  
**\$99.99 us \$119.99 CAN**  
 MODEL: ATP/Gen IV, 6x6 [Installs using existing mounting holes]

---

**#2876020** | Sportsman X2 Mount Adaptor\*  
**\$19.99 us \$24.99 CAN** | \*must use with **#2874774**  
 MODEL: Sportsman X2

» **STEP 3:** Select a Lift Method

Choose a Polaris winch, Polaris Warn® winch or an electric lift. Sportsman ATVs come with factory installed wiring for all Polaris and Polaris Warn® winch kits for fast installation. All winch kits come pre-wired and are only available from Polaris. (Additional winch information pg. 16)

---

**#2876494** | Polaris 3500 lb. Winch  
**\$449.99 us \$499.99 CAN**  
 MODEL: All Sportsman MY 05-08

---

**#2875879** | Polaris 2500 lb. Winch  
**\$399.99 us \$479.99 CAN**  
 MODEL: All Sportsman MY 05-08

---

**#2876819** | Polaris Warn® RT 30 Winch Kit  
**\$599.99 us \$689.99 CAN**  
 MODEL: All Sportsman MY 05-08

---

**#2875952** | Polaris Warn® 2.5 ci Winch Kit  
**\$499.99 us \$579.99 CAN**  
 MODEL: All Sportsman MY 05-08

---

**#2875881** | 500 lb. Plow lift  
**\$159.99 us \$199.99 CAN** | Must Order **#2874664**

---

**#2874664** | Winch Mount and Strap Kit  
**\$34.99 us \$45.99 CAN** | Required for **#2875881**

» **STEP 4:** Select a Plow Blade

Select a blade from our variety of sizes and capabilities, each with Polaris engineering for a perfect fit. Our blades fit all our plow frames.

---

**A. Snow Blades**

---

**#2874827** | 48" Snow/Dirt Blade  
**\$139.99 us \$169.99 CAN**

---

**#2875342** | 52" Snow Blade  
**\$144.99 us \$179.99 CAN**

---

**#2874929** | 60" Snow Blade  
**\$169.99 us \$199.99 CAN**

---

**B. 60" Razor Two-way Blade**  
 A dual one-way blade.

---

**#2875370** | 60" Razor Two-way Blade  
**\$239.99 us \$279.99 CAN**

---

**C. 56" One-way Blade with Snow Deflectors**  
 This durable plow is fashioned out of hardened, powder-coated steel and engineered at the perfect angle to throw snow up and over tall snow banks.

---

**#2872684** | 56" One-way Blade w/ Deflectors  
**\$249.99 us \$289.99 CAN**

---

**D. 56" V-Plow Blade**  
 A plow that adjusts to five different angles on each side for maximum maneuverability.

---

**#2871795** | 56" V-Plow Blade  
**\$449.99 us \$534.99 CAN**



Sportsman 300 with Glacier II Plow System shown.

#### PLOW BLADES



A. 48", 52", 60" Blades



B. Razor 60" Two-way Blade



C. 56" One-way Blade

### Universal Plow System »

An affordable, extremely versatile and easy-to-install plow system for all Sportsman ATV and Sportsman 300/400 HO models from 1998 to present (except Sportsman X2) and Hawkeye. With the mount plate installed, it takes just 3 to 5 minutes to attach the plow.



INSTALL IN 3-5 MIN.

#### » STEP 1: Select a Frame

**#2875656** | Universal Plus Frame and Mount

**\$269.99 us \$359.99 CAN**

MODEL: ATP, All Sportsman MY 08-prior (except Sportsman X2), Sportsman 300/400 HO MY 08 & Hawkeye MY 06-07

**#2876133** | Universal Plus Plow Extension

**\$79.99 us \$95.99 CAN** | [for use with tracks]

#### » STEP 2: Select a Lift Method

Choose a Polaris winch, Polaris Warn® winch or an electric lift. Sportsman ATVs come with factory installed wiring for all Polaris and Polaris Warn® winch kits for fast installation. All winch kits come pre-wired and are only available from Polaris. (Additional winch information pg. 16)

**#2876494** | Polaris 3500 lb. Winch

**\$449.99 us \$499.99 CAN**

MODEL: All Sportsman MY 05-08

**#2875879** | Polaris 2500 lb. Winch

**\$399.99 us \$479.99 CAN**

MODEL: All Sportsman MY 05-08

**#2876639** | Polaris 1500 lb. Winch Kit

**\$299.99 us \$349.99 CAN**

MODEL: Sportsman 400 HO MY 08

**#2875880** | Polaris 1500 lb. Winch Kit

**\$299.99 us \$349.99 CAN**

MODEL: Sportsman 300 MY 08, Hawkeye MY 06-07

**#2876819** | Polaris Warn® RT 30 Winch Kit

**\$599.99 us \$689.99 CAN**

MODEL: All Sportsman MY 05-08

**#2875952** | Polaris Warn® 2.5 ci Winch Kit

**\$499.99 us \$579.99 CAN**

MODEL: All Sportsman MY 05-08

**#2875881** | 500 lb. Plow lift

**\$159.99 us \$199.99 CAN** | Must Order #2874664

**#2874664** | Winch Mount and Strap Kit

**\$34.99 us \$45.99 CAN** | Required for #2875881

#### » STEP 3: Select a Plow Blade

Select a blade from our variety of sizes and capabilities, each with Polaris engineering for a perfect fit. Our blades fit all our plow frames.

##### A. Snow Blades

**#2874827** | 48" Snow/Dirt Blade

**\$139.99 us \$169.99 CAN**

**#2875342** | 52" Snow Blade

**\$144.99 us \$179.99 CAN**

**#2874929** | 60" Snow Blade

**\$169.99 us \$199.99 CAN**

##### B. 60" Razor Two-way Blade

A dual one-way blade.

**#2875370** | 60" Razor Two-way Blade

**\$239.99 us \$279.99 CAN**

##### C. 56" One-way Blade with Snow Deflectors

This durable plow is fashioned out of hardened, powder-coated steel and engineered at the perfect angle to throw snow up and over tall snow banks.

**#2872684** | 56" One-way Blade w/ Deflectors

**\$249.99 us \$289.99 CAN**



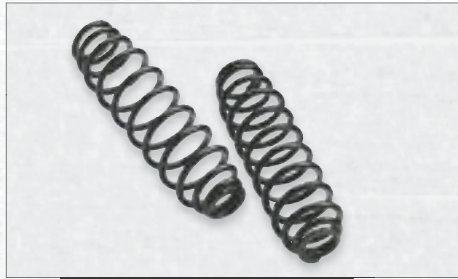
**Spring Pre-Load Adjusters »**

Everything you need to adjust spring pre-load for varying loads and off-road conditions.

#2876463 | Spring Pre-Load Adjusters

\$79.99 us \$94.99 CAN

MODEL: Sportsman MY 08-prior



**Heavy-Duty Front Suspension Springs »**

Stiffer springs replace stock springs for carrying heavier loads and riding on extreme terrain. Increases lift while snow plowing. Spring rate is 128 lb./in.

#2876153 | Heavy-Duty Front Suspension Springs

\$49.99 us \$59.99 CAN

MODEL: Sportsman MY 05-08



**Coil Spring Spacers »**

Increases leverage by reducing compression of the front suspension from the weight of your plow. Can be used in single or multiple pairs for greater lift.

#2872655 | Coil Spring Spacer

\$15.99 us \$23.99 CAN | sold in pairs

MODEL: Sportsman MY 08-prior



**Rear Tire Chains »**

Chains give you all the traction you need on ice and snow.

#2870948 | Rear Tire Chains - Size C (25"/26" tire)

\$65.99 us \$99.99 CAN | sold in pairs

MODEL: Sportsman MY 08-prior



**Throttle Heater/Thumb Warmer »**

Thumb your nose at the cold with this little baby. It keeps your throttle thumb warm in cold weather.

#2874576 | Composite Plastic Throttle

\$41.99 us \$54.99 CAN

MODEL: Sportsman MY 08-prior

#2871314 | Metal Throttle

\$39.99 us \$54.99 CAN



**Hand Warmers »**

Stay out as long as you need to – your hands won't notice. Keeps both hands warm while riding in cold weather with these toasty hand warmers. All wiring is included.

#2875344 | Hand Warmer

\$49.99 us \$69.99 CAN

MODEL: All carbureted or EFI models



**ATV Mitts »**

Keep your hands warm, dry and comfortable when you work and ride in cold weather. Constructed of heavy duty 600 denier polyester and 1/4" foam.

#2873344-070 | ATV Mitts

\$37.99 us \$54.99 CAN



**Oil Tank Heater »**

This oil reservoir heater makes starting your 4-stroke and diesel ATV easier in sub-zero temperatures. It is designed exclusively for ATVs with metal remote oil reservoir, not for plastic style tanks.

#2871873 | Oil Tank Heater

\$69.99 us \$109.99 CAN



**Engine Heater »**

Keeps engine warm for easier starting in cold weather.

#2871507 | Engine Heater

\$89.99 us \$124.99 CAN

MODEL: all models except 425/600/700/800

#2873069 | Frost Plug Block Heater

\$59.99 us \$88.99 CAN

MODEL: Sportsman 600/700/800





### Wear Bars »

#### Super Heavy-Duty Wear Bar

Made of hardened steel, lasts longer than standard wear bars, for serious plowing.

#2873425 | 48" Super Heavy-Duty Wear Bar  
\$42.99 US \$59.99 CAN

#2873424 | 56" Super Heavy-Duty Wear Bar  
\$64.99 US \$84.99 CAN

#2873426 | 60" Super Heavy-Duty Wear Bar  
\$49.99 US \$64.99 CAN

#### Standard Wear Bar

Replaces stock wear bar for snow blades.

#2871805 | 48" Standard Wear Bar  
#2875757 | 52" Standard Wear Bar  
\$24.99 US \$36.99 CAN

#2871980 | V-Plow Standard Wear Bar  
\$24.99 US \$32.99 CAN

#2871806 | 60" Standard Wear Bar  
\$29.99 US \$38.99 CAN

#### Floating Wear Bar

Unique design prevents catching an edge, turns your plow into a year-round, all-weather machine. Perfect for use on gravel and grass areas to move landscaping, construction debris, you name it.

#2875369 | Floating Wear Bar  
\$49.99 US \$69.99 CAN



### Super Heavy-Duty Skid Shoes »

Hardened steel gives them industrial strength, helping prevent blade damage. More durable than stock skid shoes.

#2873423 | Super Heavy-Duty Skid Shoes  
\$19.99 US \$29.99 CAN | sold in pairs



### Plow Markers »

Rises above the snow so you can monitor the position of your plow blade.

#2872726 | Plow Marker  
\$19.99 US \$27.99 CAN | sold in pairs



### Snow Deflectors »

Boosts your plow's capacity and keeps snow and dirt moving in the right direction. "Quick detach" feature makes it easy on/easy off. Fits 48", 52", 60" and V-Plows.

#2872061 | Side Panel Deflectors  
\$64.99 US \$89.99 CAN

#2871808 | 60" Blade Snow Deflector  
\$39.99 US \$54.99 CAN

#2872006 | V-Plow Blade Snow Deflector  
\$54.99 US \$69.99 CAN

#2875521 | Razor Two-way Blade Deflector  
\$59.99 US \$84.99 CAN

Plow Replacement Part	Part #	US	CAN
60" Floating Wear Bar, Low Impact	#2875369	\$49.99	\$69.99
Super Heavy Duty Skid Shoe	#2873423	\$19.99	\$29.99
48" Wear Bar & Hardware	#2871805	\$24.99	\$36.99
52" Wear Bar & Hardware	#2875757	\$24.99	\$36.99
48" Super Heavy Duty Wear Bar	#2873425	\$42.99	\$59.99
60" Wear Bar & Hardware	#2871806	\$29.99	\$38.99
60" Super Heavy Duty Wear Bar	#2873426	\$49.99	\$64.99
56" One-way Super Heavy Duty Wear Bar	#2873424	\$64.99	\$84.99
Blade Springs	#2871823	\$11.99	\$16.99
V-Plow, Wear Bar	#2871980	\$24.99	\$32.99
V-Plow, T-Handle Pin	#2871981	\$14.99	\$21.99
V-Plow, Left Adjustable Arm	#2871979	\$34.99	\$51.99
Right Adjustable Arm, V-Plow	#2871982	\$34.99	\$51.99
Blade Lock Lever Spring	#2871820	\$2.49	\$3.95

# UNBEATABLE.

ADD AFFORDABILITY  
TO YOUR CUSTOM LOOK.

## WHEELS & TIRES

Give your Polaris ATV a custom look and the right traction for your precise needs. From turf tires to radials with aggressive tread patterns, Pure Polaris tires and rims give you the customized look and performance you want, and the exact fit you need. Sold individually and in kits, every Pure Polaris tire and rim is built to our high standards for quality, at a price you can afford. ■

## WHICH WOULD YOU RATHER RIDE?

CUSTOM TIRES AND RIMS VS. STOCK



CUSTOM



STOCK





14" Crusher Aluminum Rims with 26" Goodyear MTR Tires

### 14" Crusher Aluminum Rims with 26" Goodyear MTR Tires »

This custom set includes 4 Goodyear MTR off-road radial tires mounted on 14" cast aluminum Crusher Rims, featuring an 8-spoke design, 7" wide on the front and 8" on the rear. The larger tire sizes add extra ground clearance: 26x9x14 in front, 26x11x14 in rear. Our 6-ply tires have dimpled tread for superior traction in wet and dry conditions. Rims are heat treated to meet automotive quality standards. Polaris exclusive wheel offering. Lug nuts included.

#2876620 | Set of 4 Tires Mounted

\$849.99 us \$1,011.99 CAN

MODEL: All Sportsman MY 05-08

#### REPLACEMENTS

#2876281 | Front Rims    #2876282 | Rear Rims  
#2875906 | Front Tires    #2875907 | Rear Tires



14" Bruiser Aluminum Rims with 26" Goodyear MTR Tires

### 14" Bruiser Aluminum Rims with 26" Goodyear MTR Tires »

This custom set includes 4 Goodyear MTR off-road radial tires mounted on 14" cast aluminum Bruiser Rims, featuring a 4-spoke design, 7" wide on the front and 8" on the rear. The larger tire sizes add extra ground clearance: 26x9x14 in front, 26x11x14 in rear. Tires have dimpled tread for superior traction in wet and dry conditions. Rims are heat treated to meet automotive quality standards. Lug nuts included.

#2875908 | Set of 4 Tires Mounted

\$849.99 us \$1,011.99 CAN

MODEL: All Sportsman MY 05-08

#### REPLACEMENTS

#2875904 | Front Rims    #2875905 | Rear Rims  
#2875906 | Front Tires    #2875907 | Rear Tires



### 12" Beadlock Rims with Kenda BearClaw Tires »

This set includes 4 aggressive Kenda BearClaw Tire mounted on Beadlock rims. Want a tire package with aggressive tread and a beefy hookup? This is it. The Kenda BearClaw features a special tear and snag resistant material that prevents punctures and extends the life of the tire.

#2875606 | Set of 4 Tires Mounted

\$599.99 us \$834.99 CAN

MODEL: All Sportsman MY 05-08



### 12" Beadlock Rims with Kenda Executioner Tires »

This set includes 4 rugged Kenda Executioner tires mounted on Beadlock rims. The tires feature 6-ply construction, rim-saver for protection from rocks and debris, dimple tread surface for improved traction and reinforced knobs to reduce roll-over at low pressure.

#2875605 | Set of 4 Tires Mounted

\$629.99 us \$847.99 CAN

MODEL: All Sportsman MY 05-08



**Goodyear MTR Tires »**

This tire delivers sharp steering response and all-day ride comfort. Designed specifically for the recreational utility market, with a 6-ply rating and aggressive mud-tire tread pattern.

#2875906 | 26x9x14 Goodyear MTR Front Tire

\$119.99 us \$154.99 CAN | sold as each

#2875907 | 25x11x14 Goodyear MTR Rear Tire

\$129.99 us \$164.99 CAN | sold as each



**Carlisle ACT Tires »**

A great all-purpose, all-terrain tire. Designed for both wet and dry conditions. Sidewall design ensures a smooth ride, lug design keeps it quiet.

#2876084 | 23x7x12 Carlisle ACT Front Tire

\$79.99 us \$99.99 CAN | sold as each

MODEL: Sportsman 300/400 HO MY 08, Hawkeye MY 06-07

#2876085 | 23x10x12 Carlisle ACT Rear Tire

\$89.99 us \$109.99 CAN | sold as each

MODEL: Sportsman 300/400 HO MY 08, Hawkeye MY 06-07



**Goodyear Mud Runner Tires »**

Designed for the muddiest conditions out there. Features 4-ply construction, extra-strong sidewall, a 1" tread depth and paddle-shaped lugs that tear through mud.

#2872460 | 26x9x12 Mud Runner Front Tire

\$100.99 us \$149.99 CAN | sold as each

#2872459 | 25x10x12 Mud Runner Rear Tire

\$110.99 us \$159.99 CAN | sold as each

#2872461 | 26x12x12 Mud Runner Rear Tire

\$131.99 us \$189.99 CAN | sold as each

#2873443 | 25x10x12 Mud Runner EMT Rear Tire

\$149.99 us \$199.99 CAN | sold as each

#2873444 | 25x8x12 Mud Runner EMT Front Tire

\$129.99 us \$169.99 CAN | sold as each



**Load Boss Turf Tires »**

These 6-ply turf tires are perfect if you drive your Sportsman ATV or RANGER over lawns because they disperse pressure across their turf-tread pattern, avoiding damage to grass while you mow or haul. Tires fit on stock rims (stock rims not included).

#2875796 | Front Tire 25x8x12

\$59.99 us \$74.99 CAN | sold as each

MODEL: All Sportsman (except 6x6)

#2875795 | Rear Tire 25x10x12

\$74.99 us \$94.99 CAN | sold as each

MODEL: All Sportsman (except 6x6)



**Kenda BearClaw Tires »**

Looking for a tire with aggressive tread and a beefy hookup? This is it. The Kenda BearClaw features a special tear and snag resistant material that prevents punctures and extends the life of the tire.

#5412516 | 25x8x12 Kenda BearClaw Front Tire

\$64.99 us \$84.99 CAN | sold as each

#5412517 | 25x10x12 Kenda BearClaw Rear Tire

\$69.99 us \$94.99 CAN | sold as each



**Kenda Executioner Tires »**

This rugged tire features 6-ply construction, rim-saver for protection from rocks and debris, dimple tread surface for improved traction and reinforced knobs to reduce roll-over at low pressure.

#2875235 | 25x8x12 Kenda Executioner Front Tire

\$74.99 us \$94.99 CAN | sold as each

#2875234 | 25x10x12 Kenda Executioner Rear Tire

\$79.99 us \$99.99 CAN | sold as each





### 12" - 14" Bruiser Rims »

These cast aluminum Bruiser Rims feature a sporty 4-spoke design, 7" wide on the front and 8" on the rear.

#2875902 | 7"x12" Front Rim  
\$74.99 us \$94.99 CAN | sold as each

#2875903 | 8"x12" Rear Rim  
\$79.99 us \$99.99 CAN | sold as each

#2875904 | 7"x14" Front Rim  
\$79.99 us \$99.99 CAN | sold as each

#2875905 | 8"x14" Rear Rim  
\$84.99 us \$109.99 CAN | sold as each



### 14" Crusher Rims »

Cast aluminum for strength and light weight. This Polaris-exclusive rim features an 8-spoke design with the aggressive look everyone's been asking for. 14" x 7" front, 14" x 8" rear. Includes lugnuts and center cap.

#2876281 | 14"x7" Front 14" Rim  
\$84.99 us \$96.99 CAN | sold as each

#2876282 | 14"x8" Rear 14" Rim  
\$89.99 us \$101.99 CAN | sold as each



### 12" Cast Aluminum Rims »

This Polaris-exclusive rim fits all Polaris ATVs. 12" x 6" front, 12" x 7" rear. Machined center cap within the wheel.

#2876086 | Front 12" Rim  
\$79.99 us \$99.99 CAN | sold as each  
MODEL: Sportsman 300/400 HO MY 08, Hawkeye MY 06-07

#2876087 | Rear 12" Rim  
\$84.99 us \$109.99 CAN | sold as each  
MODEL: Sportsman 300/400 HO MY 08, Hawkeye MY 06-07

## TIRE ACCESSORIES

Rear Tire Chains



### 6x6 Tracks

Need the extra traction in the snow? These tracks are made to fit Goodyear® 25x11x10 tire provide for a greater mobility in the snow for your 6x6 ATV.

#2871496 | Tracks  
\$1,299.99 us \$1,599.99 CAN

#2871861 | Replacement - Wheel Spacer Kit  
\$34.99 us \$51.99 CAN

#5241772 | Replacement - Track Guide  
\$14.99 us \$18.99 CAN

#5211743 | Replacement - Plate  
\$5.99 us \$7.99 CAN

### Rear Tire Chains

For days when more friction is a plus, these rear tire chains grab snow and ice for great traction when you need it.

#2870948 | V-bar, Size C (25" & 26" tire)  
\$65.99 us \$99.99 CAN | sold as pair

### Lug Nuts and Center Caps

#2854604 | Polaris Rim Center Caps  
\$7.99 us \$11.99 CAN

#2874648 | Lug Nuts for Aluminum Rim  
\$11.99 us \$17.99 CAN | sold as sets of 4  
\*Comes with Lug Nut Tool

#2876754 | Lug Nuts for Aluminum Rim  
\$11.99 us \$17.99 CAN | sold as sets of 4



6x6 Tracks

# LEAVE THE TOOLS AT HOME.

WITH LOCK & RIDE ACCESSORIES ARE ON IN OFF IN SECONDS.



## LOCK & RIDE TECHNOLOGY

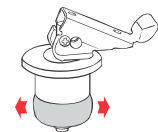


Put away the tools. Thanks to Lock & Ride Expansion Anchor Technology from Polaris accessories, are on in off in seconds.

The award-winning Lock & Ride technology is part of our continuing goal to make Polaris ATVs the easiest vehicles in the industry to accessorize. A Lock & Ride demonstration is often so powerful, that it closes the deal on a Polaris ATV purchase when compared to other brands. Riders know after they have seen the technology in action that Lock & Ride is the easiest way to take their riding experience to the next level. ■



UN-EXPANDED



EXPANDED



# CHANGE YOUR MIND? CHANGE YOUR ACCESSORIES. IT'S THAT EASY.



TIME (SEC)



You got that morning hunt in, then the weather warms up and you decide to tackle that weekend chore list or just go for a nice long trail ride. No problem. The Polaris-exclusive Lock & Ride technology lets you change accessories in seconds. In less than a minute, you can

remove the Lock & Ride Gun Scabbard and the Lock & Ride Cargo Box, then attach the Lock & Ride Windshield. It's that easy. And if you decide to return to the field for the evening hunt, you can switch accessories again almost as fast as you change your mind.

## ACCESSORIZE IN SECONDS. THE FASTEST IN THE INDUSTRY.

### Lock & Ride Cargo Boxes »

It doesn't get any easier than this. Align the cargo box to the Lock & Ride holes (left), insert the expanding anchors into the Lock & Ride holes (center), push down the anchor to lock it in place (right), and go.

**INSTALL IN 15**  
SEC.



### Lock & Ride Windshield »

Put it on for extra protection, take it off to feel the breeze. Installation is a snap. Just place the clamps on the handlebars (left), align the clamps with the hinge (center), lock the clamps down (right) and ride on.

**INSTALL IN 15**  
SEC.



### Lock & Ride Gun Scabbard Mount »

No tools required. Align the mount to the foot well and Lock & Ride holes (left), insert the anchors into the Lock & Ride holes and lock them (center), insert the Gun Scabbard (right) and you're ready to go.

**INSTALL IN 15**  
SEC.



**Lock & Ride Windshields »**

This windshield effectively blocks wind, dust and debris, and does it with rugged good looks. Best of all, it attaches faster than any other windshield on the market. It goes on or off in seconds, so you can ride with or without a windshield depending on weather and trail conditions. Choose from two heights to match your riding style or body type. For a sweet custom look, go with a low profile windshield, available in chrome or black.

- » Height measured from top of pod to the top of windshield
- » .093" polycarbonate

#2876017 | Tall Windshield 19.25"

#2876018 | Mid Windshield 17.75"

\$119.99 us \$149.99 CAN

MODEL: All Sportsman MY 05-08

#2875805 | Chrome Windshield 9.5"

\$99.99 us \$119.99 CAN

MODEL: All Sportsman MY 05-08

#2875781 | Black Windshield (9.5")

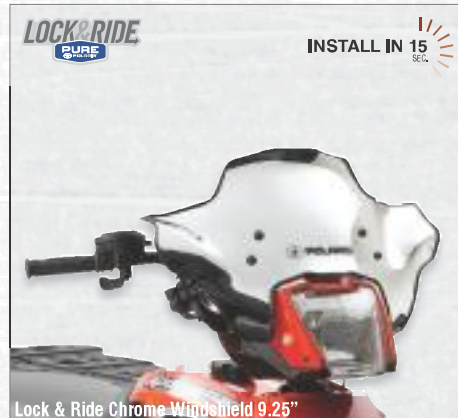
\$79.99 us \$99.99 CAN

MODEL: All Sportsman MY 05-08

#2875682 | 18.5" Tall Windshield

\$109.99 us \$129.99 CAN

MODEL: Sportsman 300/400 HO MY 08, Hawkeye MY 07-08



**Lock & Ride Gun Scabbard Mounts »**

Transport your rifle or shotgun in this high-impact case. Lock & Ride technology lets you attach the gun scabbard in seconds, so you can use it when you need it, quickly remove it when you don't. Holds your firearm securely over any terrain. Features interior padding, is dust proof and water resistant.

- » Works with Cargo Box, Bag and/or Rack Extenders

#2876276 | Gun Scabbard Mount, Right Side

#2876275 | Gun Scabbard Mount, Left Side

\$99.99 us \$114.99 CAN

MODEL: Sportsman MY 05-08

#2875783 | Gun Scabbard Mount - Universal

\$99.99 us \$119.99 CAN

MODEL: Sportsman X2

#2876493 | Gun Scabbard Mount - Universal

\$99.99 us \$119.99 CAN | Late Fall Availability

MODEL: Sportsman Touring

#2875679 | Right Side Mount

#2875704 | Left Side Mount

\$89.99 us \$109.99 CAN

MODEL: Sportsman 300/400 HO MY 08, Hawkeye MY 06-07

**Gun Scabbards & Mounts »**

Our padded-interior gun scabbard protects and holds your firearm securely in place over any terrain. Dust-proof and water-resistant, it is designed to attach perfectly to your Polaris ATV. It will accommodate any shotgun or right handed, bolt-action rifle.

#2872677 | Kolpin Gun Scabbards - Black

\$59.99 us \$79.99 CAN

MODEL: Sportsman MY 05-08, Sportsman X2

#2872677-419 | Kolpin Gun Scabbards - Mossy Oak®

\$114.99 us \$139.99 CAN

MODEL: Sportsman MY 05-08, Sportsman X2

#2874953 | Kolpin Gun Scabbard Mounts - Metal

\$81.99 us \$99.99 CAN

MODEL: Gen IV, IV+, VI

#2873086 | Kolpin Gun Scabbard Mounts - Plastic

\$45.99 us \$54.99 CAN

MODEL: Gen IV, IV+, VI



INSTALL IN 15 SEC.





Cargo Pocket Bags



Mesh Pocket Bags

INSTALL IN 15  
SEC.

#### Additional Storage

Pocket bags strap directly to your cargo box or bag. Sold separately from cargo box and bags.

**LOCK&RIDE**  
PURE  
POLARIS



### Lock & Ride Cargo Box »

The ultimate in storage, this large-capacity cargo box has locking latches, heavy poly construction and air-tight lid gaskets. When you stow your tools or gear, you know it's safe and secure. And because it's a Lock & Ride box, it goes on in just 15 seconds. And when the ride is done, pop it off, grab the molded handles and store it. Cargo bags not included.

» Works with Rack Extender and/or Gun Scabbard and/or Cargo Pocket Bags

#2875176 | Cargo Box - Black

\$189.99 us \$229.99 CAN

MODEL: All Sportsman 05-08

**Pocket Bags** - These bags strap directly to your cargo box or bag, giving you quick access to water, maps or other small items you may need while riding. Attachment Velcro Loops required to attach bags.

#2875372-070 | Cargo - Black

\$19.99 us \$29.99 CAN | sold as each

#2875372-419 | Cargo - Mossy Oak® Break-up

\$22.99 us \$34.99 CAN | sold as each

#2876021 | Mesh - Black

\$14.99 us \$17.99 CAN | sold as each

#2875339 | Attachment Velcro Loops

\$7.99 us \$9.99 CAN | sold as set of 8

INSTALL IN 15  
SEC.



NEW

#### Endless Uses.

With a removable lid this versatile cargo bag can carry just about anything from your helmet to your two buckets of ice fishing gear.

**LOCK&RIDE**  
PURE  
POLARIS



### Lock & Ride Semi-Rigid Cargo Bag »

Perfect for carrying all your gear - even your helmet. A semi-rigid foam construction quoted in 600 Denier material bag that holds its shape whether empty or full. A removable lid allows for larger cargo that wouldn't fit normally, and as with all Lock & Ride accessories it installs quick and easy with no tools.

#2876663 | Semi-Rigid Cargo Bag - Black

\$119.99 us \$136.99 CAN

MODEL: All Sportsman MY 05-08

### Lock & Ride Expanding Anchor »

Keep a few on hand as replacements or use them to adapt other accessories to the Lock & Ride system.

#2875230 | Expanding Anchor with Mount

\$24.99 us \$32.99 CAN

#2875325 | Replacement Anchor

\$14.99 us \$19.99 CAN

**LOCK&RIDE**  
PURE  
POLARIS





LOCK & RIDE  
PURE  
INSTALL IN 15 SEC.

**Lock & Ride Rear Cargo Bag »**

Need a lot of storage? This is your bag. Made of tough 650 denier polyester and waterproof zippers, it keeps its shape even when empty. It has Velcro straps for quick and easy attachment, and a sturdy handle for convenience and portability. Total capacity: 3,320 cubic inches.

#2875307-070 | Rear Cargo Bag - Black

\$79.99 us \$99.99 CAN  
MODEL: All Sportsman MY 05-08

#2875307-419 | Rear Cargo Bag - Mossy Oak®

\$89.99 us \$124.99 CAN  
MODEL: All Sportsman MY 05-08



LOCK & RIDE  
PURE  
INSTALL IN 15 SEC.

**Lock & Ride Cargo Box Backrest »**

This durable backrest adds an extra measure of comfort to your Sportsman.

- » Ultra-strong, durable upholstery
- » Bolts directly to Cargo Box #2875176
- » Works with Pocket Bags or Lock & Ride Gun Scabbard Mount

#2875548 | Cargo Box Backrest

\$59.99 us \$74.99 CAN | MODEL: Sportsman MY 05-08



LOCK & RIDE  
PURE  
INSTALL IN 15 SEC.

**Lock & Ride Backrest »**

A perfect fit in 15 seconds, this backrest offers comfort, durability and adjustability to conform to your back and keep you riding in total comfort.

- » Fits with Lock & Ride Gun Scabbard Mount and Steel Compartment Rack

#2875549 | Backrest

\$199.99 us \$259.99 CAN | MODEL: Sportsman MY 05-08



LOCK & RIDE  
PURE  
INSTALL IN 15 SEC.

**Lock & Ride Cargo Box » 300/400 HO**

Our largest capacity box for Hawkeye. Features Lock & Ride Technology for quick on/off. Includes: a removable top lid to give you the option of an open cargo holder, tongue-and-groove neoprene gasket to seal lid from dust and moisture, plus a molded cargo tray with handles. Backrest not included.

- » Will work with rack extender and/or gun scabbard

#2875678 | Cargo Box - Black

\$159.99 us \$189.99 CAN  
MODEL: Sportsman 300/400 HO, Hawkeye



LOCK & RIDE  
PURE  
INSTALL IN 15 SEC.

**Lock & Ride Cargo Box Backrest » 300/400 HO**

This durable backrest adds an extra measure of comfort to your Sportsman 300/400 HO or Hawkeye ATV.

- » Ultra-strong, durable upholstery
- » Bolts directly to Cargo Box #2875678

#2876089 | Cargo Box Backrest

\$119.99 us \$149.99 CAN  
MODEL: Sportsman MY 300/400 HO, Hawkeye



LOCK & RIDE  
PURE  
INSTALL IN 15 SEC.

**Lock & Ride Backrest » 300/400 HO**

Stay comfortable so you can ride longer. This backrest locks into place in seconds and is fully adjustable.

- » Fits with Lock & Ride Gun Scabbard Mount and Rear Rack Extenders

#2875705 | Lock & Ride Backrest

\$149.99 us \$189.99 CAN | MODEL: Sportsman 300/400 HO, Hawkeye



### Lock & Ride 5 Gallon Bucket Holder »

Perfect for carrying all your ice fishing gear, transporting landscape material, and hundreds of other uses. Installs quick and easy with no tools.

#2876495 | 5 Gallon Bucket Holder  
\$129.99 us \$149.99 CAN | MODEL: Sportsman MY 05-08



### Lock & Ride 14 Gallon Sprayer »

No need to tow when you spray with this tank – just pop it on and off the rear rack of your machine for a fast, efficient system that can really cover some ground. Make it an even faster job with our exclusive Lock and Ride anchor mount (sold separately). Includes 15' hose on hand sprayer with 45 adjustable spray tip.

#2874973 | 14 Gallon Sprayer  
\$279.99 us \$419.99 CAN | MODEL: Sportsman 05-08

#2875319 | Lock & Ride Anchor Mount  
\$119.99 us \$159.99 CAN

#2871340 | Boom Mounting Kit\*  
\$54.99 us \$79.99 CAN | \*Required for spray booms

#2871088 | 42" Spray Boom with 80" spray width  
\$69.99 us \$104.99 CAN

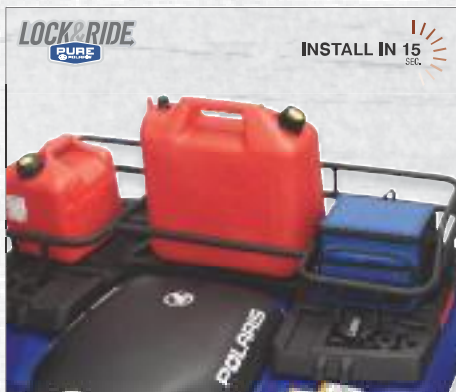
#2871089 | 123" Spray Boom with 144" spray width  
\$154.99 us \$229.99 CAN



### Lock & Ride Chainsaw / Work Box »

Attention chainsaw owners! This is your box. Separate compartments hold your saw, oil and axe. And it works with our gun scabbard, making it perfect for building tree stands before the hunt.

#2875758 | Chainsaw / Workbox  
\$179.99 us \$229.99 CAN | MODEL: Sportsman 05-08



### Lock & Ride Steel Compartment Rack »

This compartmentalized rack is the perfect solution to the problem of sliding gear. Gas can, cooler, tool box, cargo bag and carry-ons are easily tied down and held in place. Rack attaches in quick and easy with no tools.

» Works with Lock & Ride Backrest #2875549  
» Will not work with Cargo Box, Bag or Rack Extenders  
» Tie-downs not included

#2875547-418 | Compartment Rack - Black Wrinkle  
\$149.99 us \$189.99 CAN | MODEL: Sportsman MY 05-08



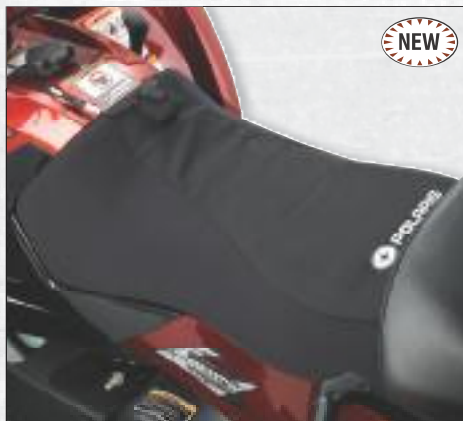
### Lock & Ride Rear Cargo Rack Basket »

You can't beat a rugged basket to help you get the job done. It holds big and bulky cargo, with plenty of tie-down points for bungee cords. Features heavy-duty construction, powder-coat finish and a rolled mesh edge with no sharp edges.

#2873397 | Rear Cargo Rack Basket - 6" tall  
\$169.99 us \$239.99 CAN | [use with Lock & Ride Mount]  
MODEL: Sportsman MY 05-08

#2873398 | Rear Cargo Rack Basket- 6" tall  
\$189.99 us \$249.99 CAN | [use with Lock & Ride Mount]  
MODEL: Sportsman MY 05-08

#2875371 | Lock & Ride Mount  
\$64.99 us \$79.99 CAN



**NEW**

**Driver Seat Heater »**

Helps keep you warm during cold-weather rides. 12-volt DC plug, rheostat for low to high heat. Simple Velcro installation. Comfortable synthetic material.

#2876859 | Driver Seat Heater  
\$149.99 us \$169.99 CAN | MODEL: Sportsman MY 05-08

#2876665 | Driver Seat Heater  
\$149.99 us \$169.99 CAN  
MODEL: Sportsman X2 & Touring MY 05-08

Driver Seat Heater



**NEW**

Passenger Seat Heater

**Passenger Seat Heater »**

Warms your passenger for ultimate cold-weather comfort. Slip-over seat heater with passenger controlled low-high heat settings, 12-volt DC plug, easy installation.

#2876666 | Passenger Seat Heater  
\$149.99 us \$169.99 CAN | MODEL: Sportsman MY 05-08



**Dual Cargo Bags »**

Made of heavy-duty, water-resistant, 600 denier ballistic material, with waterproof zippers, to protect tools and gear in the back of your Sportsman X2.

#2876088 | Dual Cargo Bags  
\$99.99 us \$119.99 CAN | MODEL: Sportsman X2



**Rear Cargo Bag »**

Made to order for the Sportsman X2. Easily straps into the rear box and keeps your gear secure and protected. Measures 35" x 11" x 7".

#2875851 | Rear Cargo Bag  
\$89.99 us \$109.99 CAN | MODEL: Sportsman X2



**NEW**

**Backrest Backpack »**

Adds extra storage, slips over backrest for easy-on, easy-off.

#2876856 | Backrest Backpack  
\$69.99 us \$79.99 CAN | MODEL: Sportsman Touring



**Passenger Hand Gauntlets »**

Molded foam for a perfect fit, they ensure all passengers stay put comfortably.

#2876022 | Passenger Hand Gauntlets  
\$29.99 us \$37.99 CAN | MODEL: Sportsman X2

#2876661 | Passenger Hand Gauntlets  
\$34.99 us \$39.99 CAN | MODEL: Sportsman Touring



**Passenger Footrest Risers »**

They add another 3" to the foot rests so shorter passengers can enjoy the ride in comfort. Made of tough, roto-molded plastic with a non-slip surface.

#2875782 | Passenger Footrest Risers  
\$49.99 us \$62.99 CAN | MODEL: Sportsman X2



**Bed Mat »**

Adds extra protection to the bed of the Sportsman X2. Prevents damage from tools, building and landscape materials. Heavy-duty rubber material, 1/4" thick.

#2875849 | Bed Mat  
\$39.99 us \$50.99 CAN | MODEL: Sportsman X2





### Rear Work Tray »

Out in the field? The work tray provides the place to tackle your project. A flat stable work surface on which to do work and place tools and materials. It's easy to clean and has a lip around its entire outer edge to keep items from rolling off the tray.

#2875653 | Rear Work Tray

\$129.99 us \$174.99 CAN | MODEL: Sportsman MY 05-08



### Cargo Bags » 300/400 HO

These 31" x 12" x 5" water resistant bags made of heavy polyester. Both front and back versions attach easily and quickly with Velcro straps.

#2875651 | Front Cargo Bag

#2875677 | Rear Cargo Bag

\$79.99 us \$109.99 CAN | MODEL: Sportsman 300/400 HO MY 08, Hawkeye MY 06-07



### Sportsman Tank Bag »

The perfect bag to store your map for quick reference and fewer stops, and have easy access to your water bottle, snacks and other necessities.

#2875318-070 | Tank Bag - Black

\$29.99 us \$44.99 CAN | MODEL: Sportsman MY 05-08

#2875318-419 | Tank Bag - Mossy Oak®

\$34.99 us \$49.99 CAN | MODEL: Sportsman MY 05-08



### Whip Flag & Mount »

Required by law in many riding areas and a good idea wherever you ride, especially in hilly terrain. Two-piece kit includes 8 ft. whip flag and mounts to cargo box.

#2870799 | Whip Flag

\$29.99 us \$44.99 CAN

MODEL: Sportsman X2

#2875885 | Mount Bracket

\$17.99 us \$21.99 CAN



### Fender Bag » 300/400 HO

Our fender bag is a great way to store the stuff you need to access frequently while riding. Water resistant zippers and a heavy, 7 oz. polyester shell with breathable, water resistant coating ensures the contents stay dry and mud-free, even if you don't.

#2876024 | Fender Bag

\$54.99 us \$68.99 CAN | MODEL: Sportsman 300/400 HO MY 08, Hawkeye MY 06-07



### Sportsman Fender Bag »

A fender bag is the perfect place to store riding gear, food and other items you want to access right from the seat. Pockets hold water bottles.

#2875306-070 | Fender Bag - Black

\$49.99 us \$69.99 CAN | MODEL: Sportsman MY 05-08

#2875306-419 | Fender Bag - Mossy Oak®

\$59.99 us \$84.99 CAN | MODEL: Sportsman MY 05-08



### Hand Guards »

Made of strong, high-density polyethylene to protect your hands from branches, brush and cold air, so your hands won't be the ones to decide when you head home.

» Mounting hardware included

» Injection molded plastic

#2875709-177 | Black Metallic

#2875709-053 | Yellow

#2875709-288 | Blazing Red

#2875709-341 | Sonic Blue

#2875709-400 | Green Metallic

\$39.99 us \$53.99 CAN | MODEL: Sportsman MY 07-08 (except 6x6), Sportsman X2 MY 06-08, Sportsman 300/400 MY 08, Hawkeye MY 06-07

#2875981 | Replacement - Brackets

\$19.99 us \$23.99 CAN | MODEL: Sportsman MY 07-08 (except 6x6), Sportsman X2 MY 06-07, Hawkeye MY 06-07

#2874871-177 | Black Metallic

#2874871-053 | Yellow

#2874871-288 | Blazing Red

#2874871-341 | Sonic Blue

#2874871-400 | Green Metallic

\$39.99 us \$53.99 CAN | MODEL: Sportsman MY 01-06 (except Sportsman X2), includes 6x6

#2875982 | Replacement - Brackets

\$19.99 us \$23.99 CAN | MODEL: Sportsman MY 01-06 (except Sportsman X2), includes 6x6

# THE ULTIMATE ARMOR FOR EVERY SITUATION.

SUPERIOR PROTECTION AND  
QUALITY FOR YOUR SPORTSMAN.



## Brushguards & Cargo Racks

For superior quality and protection, insist on Pure Polaris brushguards and rack extenders. Designed by Polaris engineers, they feature durable steel-tube construction and are shaped to follow the contours of your ATV precisely. They fit perfectly and attach to factory-installed mounting locations for easy installation. Choose from a variety of colors to give your Polaris ATV a sweet, customized look. ■



### Sportsman Bodyguard™ >>

Our latest and greatest design works like body armor for your ATV. Mix and match up to a half dozen guards, extenders and protectors to add just the right combination of protection and customization.

#2875599 | Front Brushguard - Silver  
 #2875599-418 | Front Brushguard - Black Wrinkle  
**\$229.99 us \$269.99 CAN**  
 MODEL: Sportsman MY 05-08

#2875604 | Front Rack Extender - Silver  
 #2875604-418 | Front Rack Extender - Black Wrinkle  
**\$89.99 us \$129.99 CAN**  
 MODEL: Sportsman MY 05-08

#2875600 | Rear Brushguard - Silver  
 #2875600-418 | Rear Brushguard - Black Wrinkle  
**\$149.99 us \$179.99 CAN**  
 MODEL: Sportsman MY 05-08

#2875601 | Left Fender Guard - Silver  
 #2875601-418 | Left Fender Guard - Black Wrinkle  
 #2875602 | Right Fender Guard - Silver  
 #2875602-418 | Right Fender Guard - Black Wrinkle  
**\$129.99 us \$159.99 CAN**  
 MODEL: Sportsman MY 05-08

#2875603 | Rear Rack Extender - Silver  
 #2875603-418 | Rear Rack Extender - Black Wrinkle  
**\$99.99 us \$144.99 CAN**  
 MODEL: Sportsman MY 05-08



### Sportsman X2 Bodyguard™ >>

It's like body armor for your ATV. Mix and match the various pieces until you find your perfect combination of protection and customization.

#2875788 | Box Rails - Silver  
 #2875788-418 | Box Rails - Black Wrinkle  
**\$69.99 us \$89.99 CAN** | MODEL: Sportsman X2

#2875786 | Left Fender Guard - Silver  
 #2875786-418 | Left Fender Guard - Black Wrinkle  
 #2875787 | Right Fender Guard - Silver  
 #2875787-418 | Right Fender Guard - Black Wrinkle  
**\$149.99 us \$179.99 CAN** | MODEL: Sportsman X2



**Deluxe Front Brushguard »**

Gives the grille and headlights added protection from low hanging branches and small trees.

#2875173-418 | Black Wrinkle

\$169.99 us \$199.99 CAN

MODEL: Sportsman MY 05-08, Sportsman X2

#2875173-288 | Red

#2875173-341 | Blue

\$179.99 us \$219.99 CAN

MODEL: Sportsman MY 05-08, Sportsman X2

#2875345 | Stainless Steel

\$349.99 us \$409.99 CAN

MODEL: Sportsman MY 05-08, Sportsman X2



**Front Double Tube Brushguard »**

Double 2" diameter tubes make for one tough brushguard and "get out of the way" styling.

#2875175-418 | Black Wrinkle

\$94.99 us \$124.99 CAN

MODEL: Sportsman MY 05-08, Sportsman X2

#2875175-288 | Red

#2875175-341 | Blue

\$109.99 us \$139.99 CAN

MODEL: Sportsman MY 05-08, Sportsman X2

#2875357 | Stainless Steel

\$279.99 us \$334.99 CAN

MODEL: Sportsman MY 05-08, Sportsman X2



**Rear Brushguard »**

A great addition in both form and function. The 2" diameter tubing follows the contour of the brake lights and storage box, and adds protection. Installs easily to the frame.

#2875174-418 | Black Wrinkle

\$94.99 us \$124.99 CAN

MODEL: Sportsman MY 05-08, Sportsman X2

#2875174-288 | Red

#2875174-341 | Blue

\$109.99 us \$139.99 CAN

MODEL: Sportsman MY 05-08, Sportsman X2

#2875356 | Stainless Steel

\$319.99 us \$384.99 CAN

MODEL: Sportsman MY 05-08, Sportsman X2



**Rear Grab Bar »**

This rugged grab bar is handy for repositioning your ATV on the trail or trailer, and as an anchor point for tying it down. Choose black wrinkle, red or blue. Installation is easy. Fits all ATV models with square rack supports.

#2875550-418 | Black Wrinkle

\$59.99 us \$84.99 CAN | MODEL: Sportsman MY 05-08,

Sportsman X2 & Sportsman Touring

#2875550-288 | Red

#2875550-341 | Blue

\$49.99 us \$59.99 CAN | MODEL: Sportsman MY 05-08,

Sportsman X2 & Sportsman Touring

**Rack Extenders »**



Front Rack Extender - Black Wrinkle



Rear Rack Extender - Black Wrinkle



Pile it on and strap it down to one of these perfectly engineered, powder coated rack extenders and you and your Sportsman are good to go. 4.5" high.

#2875217-418 | Front Rack Extender - Black Wrinkle

\$69.99 us \$99.99 CAN | MODEL: Sportsman MY 05-08

#2875217-288 | Front Rack Extender - Red

#2875217-341 | Front Rack Extender - Blue

\$79.99 us \$114.99 CAN | MODEL: Sportsman MY 05-08

#2875216-418 | Rear Rack Extender - Black Wrinkle

\$69.99 us \$99.99 CAN | MODEL: Sportsman MY 05-08

#2875216-288 | Rear Rack Extender - Red

#2875216-341 | Rear Rack Extender - Blue

\$79.99 us \$149.99 CAN | MODEL: Sportsman MY 05-08

#2876486-418 | Rear Rack Extender

\$69.99 us \$79.99 CAN | MODEL: Sportsman Touring







#### Front Brushguard » 300/400 HO

A tough, dangerous look for an aggressive vehicle. Our Sportsman 300/400 HO Front Brushguard is compatible with a winch and has a rust and scratch resistant finish.

#2875587-418 | Black Wrinkle

\$99.99 us \$129.99 CAN

MODEL: Sportsman 300/400 HO MY 08, Hawkeye MY 06-07



#### Deluxe Front Brushguard » 300/400 HO

Provides extra protection when you're busting through brush. Features a tough, wrinkle black finish that's rust and scratch resistant. Compatible with winch.

#2876637-418 | Black Wrinkle

\$149.99 us \$169.99 CAN | MODEL: Sportsman 400 HO

#2875587-418 | Black Wrinkle

\$149.99 us \$169.99 CAN | MODEL: Sportsman 300 MY 08, Hawkeye MY 06-07



#### Front Grille Screen » 300/400 HO

Helps protect your Sportsman 300/400 HO steering, angle drive and CV boots from rocks, branches and trail debris.

#2875888 | Black Wrinkle

\$39.99 us \$49.99 CAN

MODEL: Sportsman 300/400 HO MY 08, Hawkeye MY 06-07



#### Rear Grab Bar » 300/400 HO

Adds a custom look and an easy hand hold for moving the Sportsman 300/400 HO. Installs in less than five minutes.

#2875767 | Black Wrinkle

\$44.99 us \$59.99 CAN

MODEL: Sportsman 300/400 HO MY 08, Hawkeye MY 06-07



#### Rear Brushguard » 300/400 HO

Designed specifically for Hawkeye to help keep the fender and tail light area looking like new. Features an aggressive look and a rust and scratch resistant finish.

#2876098-418 | Black Wrinkle

\$84.99 us \$119.99 CAN

MODEL: Sportsman 300/400 HO MY 08, Hawkeye MY 06-07



#### Skid Plate » 300/400 HO

Adds extra protection to the underside of your Sportsman 300/400 HO. Made of super-tough polyethylene, corrosion-resistant.

#2875731 | Black Wrinkle

\$44.99 us \$59.99 CAN

MODEL: Sportsman 300/400 HO MY 08, Hawkeye MY 06-07



#### Rack Extenders » 300/400 HO

These front and rear Rack Extenders will help keep your gear secure, and work especially well with our durable soft bags and the Rear Cargo Box. Easy installation, scratch resistant finish.

#2875680-418 | Front Rack Extender - Black Wrinkle

\$69.99 us \$94.99 CAN

MODEL: Sportsman 300/400 HO MY 08, Hawkeye MY 06-07

#2875598-418 | Rear Rack Extender - Black Wrinkle

\$69.99 us \$94.99 CAN

MODEL: Sportsman 300/400 HO MY 08, Hawkeye MY 06-07

# PURE VERSATILITY.

GO ANYWHERE, MOW EVERYTHING.



## MOWERS

Pure Polaris mowers and pull-behinds turn your Polaris ATV into a go-anywhere, do-anything work machine. Haul firewood and landscape materials, mow acres of grass in a snap, cut down small trees, broadcast seed and fertilizer, spot spray soybean fields, the list goes on and on. ■

- 44" Trail Mower



- 60" Front / Rear Mount Mower



- 44" Trailcutter Mower  
 - 44" Rough Cut Trail Mower  
 - 52" Rough Cut Trail Mower



- 50" Front / Rear Mount Mower

**44" Trail Mower** » FINISH CUT

Comes with a 11.5 hp I/C Briggs & Stratton engine with recoil start. Easy tool-less adjustments, rear discharge and key presence lock-cut system.

#2856668 | 44" - 11.5 hp Finish Cut Mower

**44" Trail Mower** » ROUGH CUT

Comes with 12.5 hp Briggs & Stratton recoil start engine. Remote blade engage, cuts most stems up to 2" in diameter and safe single point height adjustment.

#2856671 | 44" - 12.5 hp Rough Cut Mower

**60" Front / Rear Mount Mower** » FINISH CUT

Powered with a 14.5 hp Briggs & Stratton Intek I/C OHV engine with 12V start. Side discharge, floating deck and easy tool-less hitch adjustments. Also features infinite height select and key presence lock-cut system. Battery not included.

#2856670 | 60" - 14.5 hp Finish Cut Mower

**44" Trailcutter Mower** » ROUGH CUT

Powered with a 14.5 hp I/C Briggs & Stratton engine. 12V electric start, heavy-duty swinging blades that cut most stems up to 2" in diameter. Remote blade engage and enhanced deck and hitch system. Battery not included.

#2856672 | 44" - 14.5 hp Rough Cut Mower

**52" Trail Mower** » ROUGH CUT

Comes with the biggest Briggs & Stratton engine at 18.5 hp with electric start. Remote blade engage, cuts most stems up to 2" in diameter and safe single point height adjustment. Battery not included.

#2856673 | 52" - Mower - 18.5 hp Rough Cut Mower

**50" Front / Rear Mount Mower** » FINISH CUT

Powered with a 11.5 hp Briggs & Stratton engine with recoil start. Remote manual clutch and floating deck design for an accurate cut.

#2856669 | 50" - 11.5 hp Finish Cut Mower



**Tandem Axle Steel Cart »**

Same tough, 1,000 lb. capacity as our Poly Cart for those who prefer a metal product. Measures 61" x 32.5" x 12" with drop-pin style hitch and a convenient one-lever dump release. Pneumatic, knobby tread tires measure 18" x 9.5".

#2875701 | Tandem Axle Steel Cart  
 \$579.99 us \$739.99 CAN



**ATV Poly Explorer Cart »**

A good bet for somewhat lighter loads – if you think 650 lbs. is light that is. Its bed measures a generous 45" x 30" x 12" and it has a heavy duty 1" axle, a drop-pin style hitch, one-lever dump release and pneumatic turf tread tires measuring 18" x 9.5".

#2875700 | Tandem Axle Steel Cart  
 \$329.99 us \$419.99 CAN



**Metal 2-Wheel Dump Cart »**

This two-wheeled cart is a work-horse, with over 1,200 lbs. of carrying power and heavy metal construction.

#2873405 | Metal 2-Wheel Dump Cart  
 \$399.99 us \$629.99 CAN



**Broadcast Spreader »**

With its 175 lb. capacity, it easily spreads not just seed and fertilizer, but ice melt, sand or any other granular material you care to pour in it making it a tool for all seasons.

#2875377 | Broadcast Spreader  
 \$249.99 us \$349.99 CAN



### Lock & Ride 14 Gallon Sprayer »

No need to tow when you spray with this tank – just pop it on and off the rear rack of your machine for a fast, efficient system that can really cover some ground. Make it an even faster job with our exclusive Lock and Ride anchor mount (sold separately). Includes 15' hose on hand sprayer with 45 adjustable spray tip.

#2874973 | 14 Gallon Sprayer

\$279.99 US \$419.99 CAN

MODEL: Sportsman 05-08

#2875319 | Lock & Ride Anchor Mount

\$119.99 US \$159.99 CAN

#2871340 | Boom Mounting Kit\*

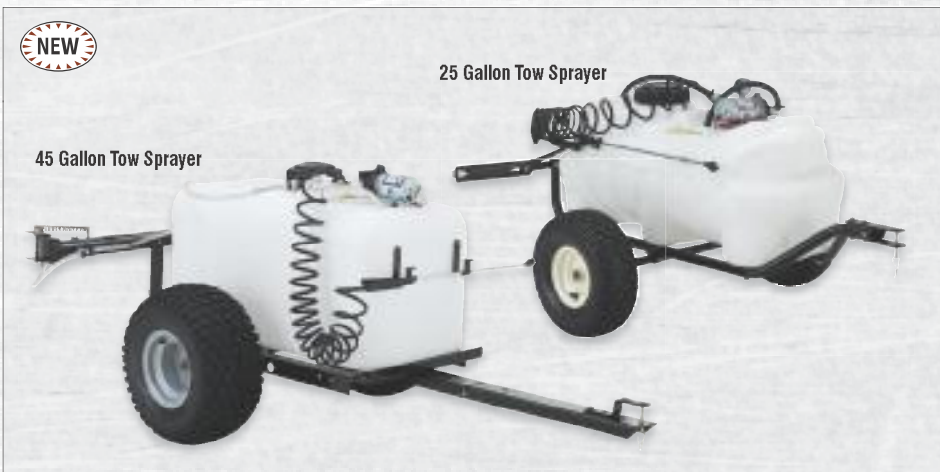
\$54.99 US \$79.99 CAN | \*Required for spray booms

#2871088 | 42" Spray Boom with 80" spray width

\$69.99 US \$104.99 CAN

#2871089 | 123" Spray Boom with 144" spray width

\$154.99 US \$229.99 CAN



45 Gallon Tow Sprayer

25 Gallon Tow Sprayer

### 45 Gallon Tow Sprayer »

Connect your ATV to this 45 gallon pull-behind sprayer and you have the ultimate spraying machine. Heavy-duty features include a Hypro 4 Roller Pump and a 3.5 hp Briggs and Stratton® engine, delivering 6.5 gallons per minute to the boom.

#2857064 | Sprayer

\$849.99 US \$969.99 CAN

### 25 Gallon Tow Sprayer »

For larger jobs, this pull-behind sprayer helps you cover a lot of ground fast. It holds 25 gallons, has a sturdy 12 gauge steel frame, a 12 volt continuous motor and a hand-held sprayer with a 15' hose for spot spraying.

#2857063 | Sprayer

\$459.99 US \$529.99 CAN

### Hitches »



#### 1" Drop Receiver Hitch Draw Bar

This draw bar has a 1" drop and mounts into any 1.25" receiver hitch. Includes pin and cotter key.

#2876377 | 1" Drop Receiver Hitch Draw Bar

\$22.99 US \$34.99 CAN

MODEL: Sportsman 05-08

#2873364 | 1/2" Receiver Pin Key Lock

\$17.99 US \$24.99 CAN



#### Rear Hitch

#2873036 | Rear Hitch

\$34.99 US \$59.99 CAN

MODEL: Sportsman - All chain driven models



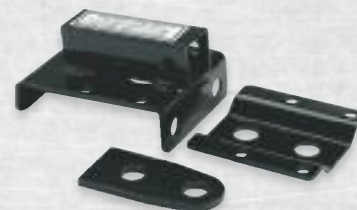
#### 3" Drop Receiver Hitch Draw Bar

For 2874490 and ATP this drawbar has a full 3" drop. Pin and cotter key not included.

#2873365 | 3" Drop Receiver Hitch Draw Bar

\$26.99 US \$35.99 CAN

MODEL: Sportsman 04-prior



#### Square Tube & Receiver Hitch

This kit fits all Sportsman models with independent rear suspension without a receiver.

#2874490 | Square Tube & Receiver Hitch

\$42.99 US \$52.99 CAN

MODEL: Sportsman 04-prior

NEW



Sportsman Trailerable Cover

Sportsman Touring Trailerable Cover

**Trailerable ATV Cover »**

If you plan to store and/or trailer your ATV this is the cover for you. It provides superior protection in damp, dusty, moldy garages and its perfect, waterproofed fit mean no flapping in the wind or exposure to the elements during transport. Improved quality and fit, 250 denier polyester with a breathable polyurethane coating.

#2875648-070 | Cover - Black

\$99.99 us \$129.99 CAN

MODEL: Sportsman 08-05

#2875648-419 | Cover - Mossy Oak® Break-up

\$119.99 us \$169.99 CAN

MODEL: Sportsman 08-05

#2876857 | Cover - Black

\$119.99 us \$142.99 CAN

MODEL: Sportsman Touring

#2876654 | Cover - Black

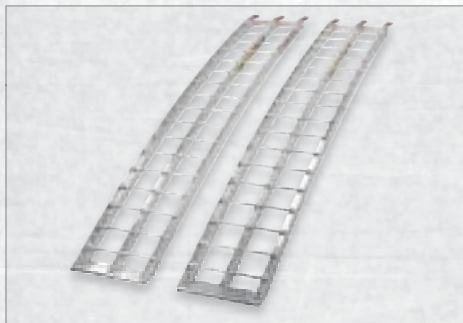
\$119.99 us \$142.99 CAN

MODEL: Sportsman X2

#2875718 | Cover - Black

\$89.99 us \$119.99 CAN

MODEL: Sportsman 300/400 HO MY 08, Hawkeye MY 06-07



**Heavy-Duty Aluminum Arched Ramp »**

This ramp set has 3,000 lbs. of combined loading capacity to make this our strongest ramp. But strong doesn't have to mean bulky or inconvenient because it dismantles to a mere 88" x 12".

#2875386 | Heavy-Duty Arched Ramp

\$299.99 us \$339.99 CAN

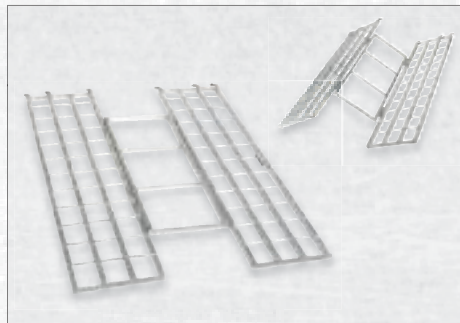


**Folding Heavy-Duty Aluminum Arched Ramp »**

Convenience and strength were merged to create this ramp which is built to look and perform like a loading ramp, not a ladder-like substitute. Strong enough to load 1,500 combined lbs. yet fold small enough to fit underneath an ATV during transport, it comes with safety straps and instructions for use.

#2875387 | Folding Heavy-Duty Arched Ramp

\$269.99 us \$309.99 CAN



**Lightweight Aluminum Tri-Fold Ramps »**

This ramp folds up for the easiest of storage solutions and will fit under your ATV. Smaller open spaces means easier loading and takes up to a 1,500 lb. load. Comes with safety straps and instructions.

#2875385 | 72" x 51" Lightweight Tri-fold Ramps

\$229.99 us \$269.99 CAN

#2875860 | 82" x 51" Lightweight Tri-fold Ramps

\$269.99 us \$309.99 CAN

**Aluminum Arched Loading Ramp »**

This ramp can load up to 2,000 lbs. in combined capacity and is still easily transportable.

#2875384 | Arched Loading Ramp

\$199.99 us \$229.99 CAN





### Tie-Down Straps »

#2871182 | 5' Tie Down Straps - Red  
#2871181 | 5' Tie Down Straps - Black

\$14.99 us \$21.99 CAN | Sold as pair

#2859047-01 | Ratchet - Red  
#2859047-02 | Ratchet - Black

\$19.99 us \$29.99 CAN | Sold as pair

#2854719 | Soft Tie Ratchet Straps - Red  
#2854720 | Soft Tie Ratchet Straps - Black

\$27.99 us \$39.99 CAN | Sold as pair

#2854721 | Cam Buckle Straps - Red  
#2854722 | Cam Buckle Straps - Black

\$27.99 us \$39.99 CAN | Sold as pack of 4



### License Plate Kit »

#2872370 | Black Plate with White Decals  
#2873315 | White Plate with Black Decals

\$12.99 us \$19.99 CAN  
MODEL: All models



### Blue Xenon Headlight Bulbs »

More than 50% brighter than stock headlight bulbs. They are 98% xenon gas, 12 volt, 50 watt bulbs.

#2876464 | \$26.99 us \$32.99 CAN

### Quartz Halogen Headlight Bulb »

Replacement bulb for your Sportsman ATV.

#2870448 | \$9.99 us \$14.99 CAN



### K&N Oil Filters »

These superb, pre-oiled filters increase the air flow to your engine to enhance and maintain performance. These long-lasting filters can also be re-used, simply clean with our cleaning kit and you're good to go.

#2875158-070 | K&N Oil Filter

\$12.99 us \$18.99 CAN  
MODEL: Sportsman 500 HO/500 EFI

#2875170-070 | K&N Oil Filter

\$12.99 us \$18.99 CAN  
MODEL: Sportsman 600/700, Sportsman 600/700/800 EFI



### K&N Air Filters »

#2871786 | K&N Air Filter

\$44.99 us \$54.99 CAN  
MODEL: Sportsman 335/400/500/600/700/800, Xplorer 500, Sportsman 6X6, Scrambler 500, Xpedition 325/425, Magnum 325/425, Trail Boss 325 (2000-01), Diesel, RANGER 500

#2871508 | K&N Air Filter

\$39.99 us \$49.99 CAN  
MODEL: Magnum 425, Scrambler 400, Sport, 400L, Big Boss 500, Xplorer 400, 1999 Xplorer 400

#2871509 | K&N Air Filter

\$39.99 us \$49.99 CAN  
MODEL: Sportsman 400, Trail Boss 250, Xpress/Xplorer 300/400, Trail Blazer, 400L 6X6, 1997-prior

#2871510 | K&N Recharge Kit - used to clean air filter

\$12.99 us \$15.99 CAN  
MODEL: Sportsman 400 MY 08, Trail Boss 250, Xpress/Xplorer 300/400, Trail Blazer, 400L 6X6, 1997-prior



### Auxiliary Oil Cooler Kit »

When the going gets tough the auxiliary oil cooler kit gets going by helping to cool your engine down during heavy use of your Hawkeye ATV.

#2875770 | Auxiliary Oil Cooler Kit

\$239.99 us \$289.99 CAN  
MODEL: Sportsman 300 MY 08, Hawkeye MY 06-07



# HIGH PERFORMANCE

---

Polaris sport quads have taken the industry by storm with their race-winning power and high-speed handling. If you're a performance rider, you know what you need to take your stock Outlaw or Predator to the next level and dominate the track or trail. And you'll find it all on the following pages.





Accessorize this machine

AS  
**LOW**  
AS

\$**26**/mo. US

With a Polaris Star Card.

\*Refer to inside back cover.



**Gripper Seat**

#2876863 | \$59.99 us \$69.99 CAN Page 53

**K&N Air Filter**

#2876739 | \$49.99 us \$56.99 CAN Page 53

**Front Grab Bar**

#2875837 | \$159.99 us \$189.99 CAN Page 52

**Nerf Bars**

#2876843 | \$149.99 us \$169.99 CAN Page 52

**Aluminum Heel Pockets**

#2876865 | \$149.99 us \$169.99 CAN Page 52



# OUTLAW *525 IRS*

WANTED IN 50 STATES. Polaris performance quads break all the rules. Right off the showroom, they come out shootin'. And when it's time to reload, add some Pure Polaris accessories to your Outlaw or Predator. Grab bars, nerf bars, performance exhaust, it's all here. By the time you're done, your Polaris will make that bike your buddy rides look like road kill. So put your Polaris sport quad in neutral for a few minutes and think of the possibilities. Now turn the page.

**Rear Grab Bar**  
#2876157 | \$69.99 US \$89.99 CAN Page 53

**FMF Exhaust Silencer**  
#2876741 | \$379.99 US \$439.99 CAN Page 52

## Accessorize your Polaris ATV online »

Log on to [www.polarisindustries.com/accessorizeyouratv](http://www.polarisindustries.com/accessorizeyouratv) and deck out your ATV with the best and proven accessories around. Once you've created the perfect machine for your needs, print out a summary of your configuration and bring it to a dealer to make your dream a reality.





**Outlaw 525/IRS FMF Performance Silencer »**

Boosts performance across the RPM range. Stainless steel construction, 4.5 lbs. lighter than stock exhaust. Use with stock header pipe, no rejetting required. Includes removable spark arrestor.

#2876741 | Performance Silencer

\$379.99 us \$439.99 CAN

MODEL: Outlaw 525/IRS MY 08



**Outlaw Performance E2 Silencer »**

Rev-up as high as you want – this premium silencer for Outlaw boosts your torque and horsepower with a light-weight, aircraft-grade twin canister, and is designed by the White Brothers.

- » USFS approved
- » For greatest hp boost, use with Outlaw Intake Kit

#2875940 | Performance E2 Silencer

\$799.99 us \$949.99 CAN

MODEL: Outlaw 500



**Outlaw Nerf Bars »**

Add these Nerf Bars to your Outlaw for added protection and safety. Made of 1 1/4 inch brushed aluminum tubing, rugged steel mounting plates and replaceable, adjustable nylon netting, and integrated mounting points for installation.

- » Webbing stays inside nerf bar for protection

#2876843 | Nerf Bars

\$149.99 us \$179.99 CAN

MODEL: Outlaw 450/500/525/S/IRS MY 08-07

#2875936 | Nerf Bars

\$239.99 us \$289.99 CAN

MODEL: Outlaw 500/525 MY 06

#2683724 | Replacement Nerf Bar Netting

\$34.99 us \$49.99 CAN



**Outlaw Heel Pockets »**

Perfect for aggressive riders who want the edge. Pockets hold your heels for a solid stance and superior overall handling.

#2876865 | Heel Pockets

\$149.99 us \$169.99 CAN

MODEL: Outlaw 450/500/525/S/IRS MY 08-06



**Outlaw Front Grab Bar »**

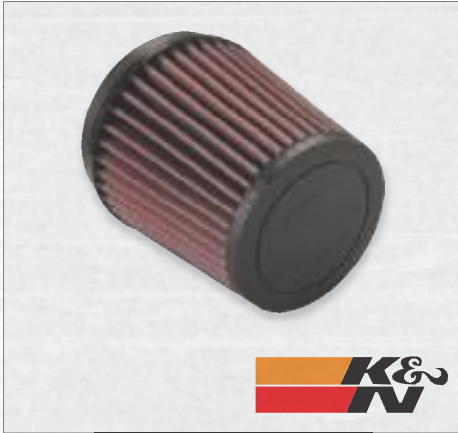
An integrated approach for protection, performance and good looks. This grab bar fits seamlessly with your Outlaw's skid plate for hardy front end protection and an aggressive custom look.

- » Made of 1" brushed aluminum tubing

#2875837 | Front Grab Bar

\$159.99 us \$189.99 CAN

MODEL: Outlaw 450/500/525/S/IRS MY 08-06



**Outlaw K&N Air Filter »**

A long-lasting, durable, completely washable and reusable performance filter by K&N made especially for the Outlaw ATV.

#2875935 | K&N Air Filter

\$49.99 us \$56.99 CAN  
MODEL: Outlaw 500

#2876739 | K&N Air Filter

\$49.99 us \$56.99 CAN  
MODEL: Outlaw 525/IRS



**White Brothers Outlaw 500 Air Intake Kit »**

For the ultimate in performance install the White Brothers Outlaw Air Intake Kit along with Outlaw E2 Performance Silencer.

#2876139 | Air Intake Kit

\$99.99 us \$119.99 CAN  
MODEL: Outlaw 500

**Predator & Outlaw Hand Shields »**



HIGH PROFILE HAND SHIELDS



LOW PROFILE HAND SHIELDS



HAND SHIELD MOUNTING BRACKET

Keep distractions to a minimum while you're racing. These newly re-designed shields deflect debris or cold air away from your hands so you can focus on speed. Mount brackets sold separately.

**High Profile Hand Shields**

- #2875974-177 | Black
- #2875974-053 | Yellow
- #2875974-288 | Red

\$15.99 us \$18.99 CAN | sold as pair  
MODEL: Outlaw 450/500/S/IRS, Predator

**Low Profile Hand Shields**

- #2875973-177 | Black
- #2875973-053 | Yellow
- #2875973-288 | Red

\$14.99 us \$17.99 CAN | sold as pair  
MODEL: Outlaw 450/500/S/IRS, Predator

**Hand Shield - Mount Brackets**

#2875972 | Mount Brackets

\$99.99 us \$119.99 CAN | sold as pair  
MODEL: Outlaw 450/500/S/IRS, Predator



**Outlaw Rear Grab Bar »**

Designed for Outlaw IRS and Outlaw S models. Features aluminum construction, with a 1" tube for easy hand holds. Mounts to stock rear grab bar location, with mounting location for whip flag.

#2876157 | Rear Grab Bar

\$69.99 us \$89.99 CAN  
MODEL: Outlaw 450/525/IRS/S MY 08-07

#2875939 | Rear Grab Bar

\$99.99 us \$999.99 CAN  
MODEL: Outlaw 500 MY 06-07



**Outlaw Gripper Seat »**

A must for extreme riders. The kit includes gripper seat cover.

#2876863 | Gripper Seat

\$59.99 us \$69.99 CAN  
MODEL: Outlaw 450/500/525/IRS/S



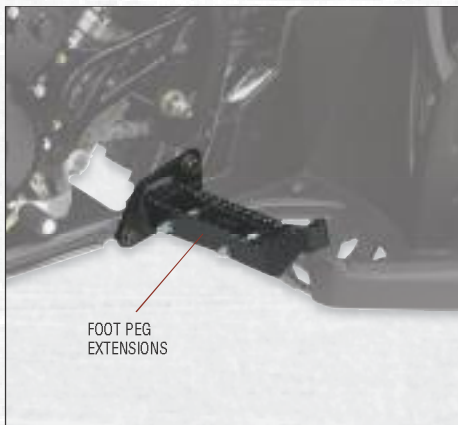
**Outlaw Rear Wheel Kit »**

Install your own dune or dirt tires on these Outlaw rear wheels. These are the exact specifications as stock wheels.

#2876078 | Rear Wheel Kit

\$269.99 us \$339.99 CAN

MODEL: Outlaw 500, Outlaw 525



**Foot Peg Extensions »**

For the most foot traction and safety add foot peg extenders to your Predator or Outlaw.

#2875433 | Foot Peg Extensions

\$69.99 us \$84.99 CAN

MODEL: Predator, Outlaw 450/500/525/IRS/S



**Predator Front Grab Bar »**

This performance-oriented grab bar protects your 2003-07 Predator's front end while adding a hot custom look. Its design follows fender lines and integrates seamlessly with the skid plate for greater protection. » Heavy-duty, 1" brushed aluminum tubing

#2874211 | Front Grab Bar

\$199.99 us \$239.99 CAN

MODEL: Predator 03-07



**Outlaw Shock Covers »**

Outlaw's "smoking guns" logo matches Outlaw's aggressive look.

#2875968 | Front & Rear Covers

\$39.99 us \$49.99 CAN | sold as pair

MODEL: Outlaw 450/500/525/IRS/S

**Polaris Shock Covers »**

The eye-catching flame graphic design fits Outlaw and Predator.

#2875970 | Front Shock Covers

\$39.99 us \$49.99 CAN | sold as pair

#2875971 | Rear Shock Covers

\$19.99 us \$24.99 CAN | sold as each

MODEL: Predator & Outlaw



**Outlaw Sprockets »**

Diamond-cut steel sprockets with a silver-zinc and red finish add souped-up performance and a powerful look.

#3222180 | 13 Tooth Rear Sprocket

#3222181 | 15 Tooth Rear Sprocket

\$24.99 us \$29.99 CAN | MODEL: Outlaw 450/525/S/IRS

#3222148 | 39 Tooth Rear Sprocket

\$29.99 us \$39.99 CAN | MODEL: Outlaw 500/525/IRS

#3222183 | 40 Tooth Rear Sprocket

\$34.99 us \$40.99 CAN | MODEL: Outlaw 500/525/IRS

#3222149 | 13 Tooth Front Sprocket

#3222153 | 15 Tooth Front Sprocket

\$19.99 us \$23.99 CAN

MODEL: Outlaw 500



**Predator Front Racing Bumper »**

Maximum protection with minimum drag. This tough, lightweight bumper is designed to integrate with your front-end and skid plate for seamless protection, while you take it all the way to the finish line.

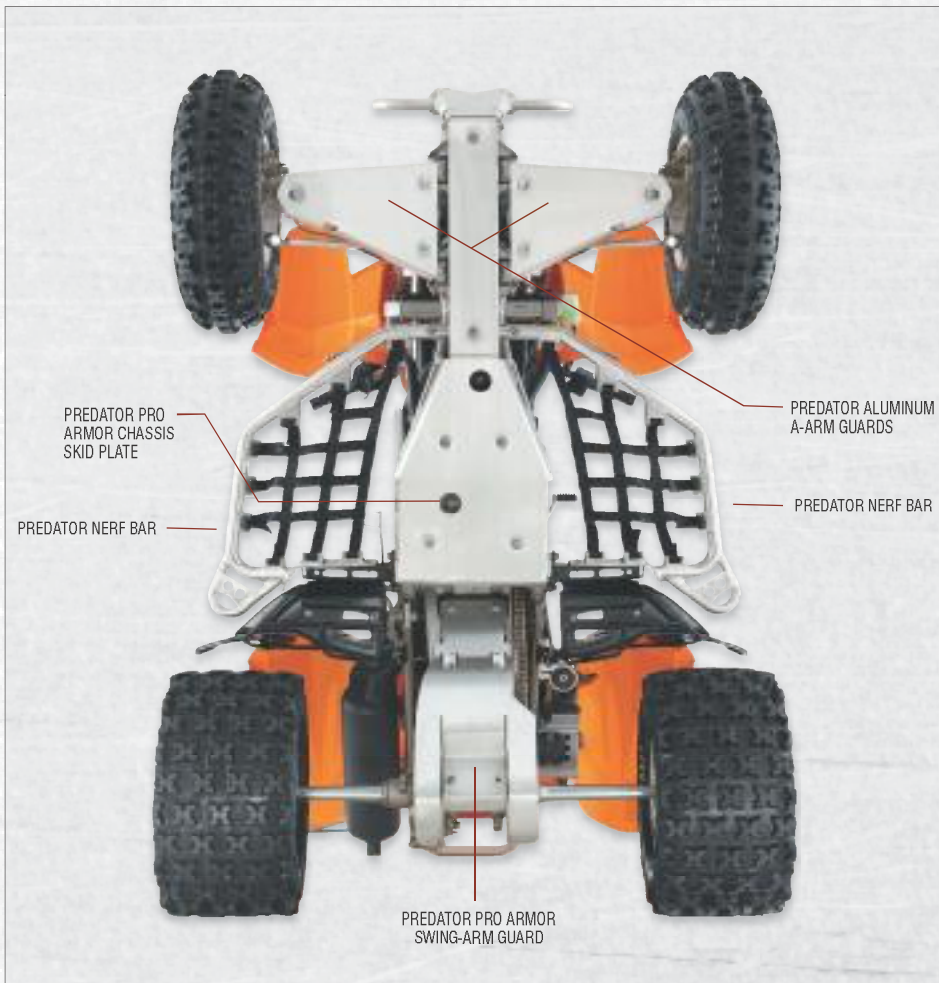
» Made of brushed aluminum tubing

#2874981 | Racing Bumper

\$119.99 us \$149.99 CAN

MODEL: Predator MY 03-07





**Predator Rear Rack »**

You ride your Predator fast and far. This light-weight, brushed aluminum rack is designed for longer trips when you need to carry a gas can, cooler or cargo bags.

#2875284 | Rear Rack

\$139.99 us \$194.99 CAN

MODEL: Predator 03-07

**Predator Pro Armor Chassis Skid Plate »**

A heavy-duty, brushed aluminum skid plate that offers high-level protection for your high-performance chassis. Shaped to wrap around the chassis for maximum protection. Mounting hardware recessed to eliminate friction points.

- » Replaces stock plastic skid plate
- » Stamped Pro Armor and Predator logos

#2874215 | Pro Armor Chassis Skid Plate

\$129.99 us \$184.99 CAN

MODEL: Predator MY 03-04

**Predator Aluminum A-Arm Guards »**

Set your wild Predator free without fear of damaging the hard-working parts underneath with these lightweight, but durable A-Arm Guards. Mounting hardware recessed to eliminate friction points.

- » 1/8" brushed aluminum

#2874213 | Aluminum A-Arm Guards

\$159.99 us \$209.99 CAN | sold as pair

MODEL: Predator

**Predator Nerf Bars »**

Add these Nerf Bars to your Predator for added protection and safety. Made of 1 1/4 inch brushed aluminum tubing, rugged steel mounting plates and replaceable, adjustable nylon netting, and integrated mounting points for installation.

- » Webbing stays inside nerf bar for protection

#2875936 | Nerf Bars

\$239.99 us \$289.99 CAN

MODEL: Predator MY 05-06

**Pro Armor Swing-Arm Guard »**

Hard racing always carries with it the potential for damage to your high-performance vehicle. Protect its essential working parts by replacing your plastic stock swing-arm guard with this extremely heavy-duty brushed aluminum version.

- » Stamped Pro Armor and Predator logos

#2874801 | Pro Armor Swing - Arm Guard

\$159.99 us \$219.99 CAN

MODEL: Predator MY 04-07



**Predator Rear Grab Bar »**

This Rear Grab Bar has a mounting tab for a dune flag and gives your machine a sleek finished look when paired with the Predator Front Grab Bar #2874211.

- » Lightweight, easy to grab, 1" brushed aluminum

#2874210 | Rear Grab Bar

\$59.99 us \$79.99 CAN

MODEL: Predator 03-07

#2683724 | Replacement Nerf Bar Netting

\$34.99 us \$49.99 CAN



PREDATOR E2 SILENCER

**Predator Performance E2 Silencer »**

We've incorporated the White Brothers E2 technology in our silencer for Predator to improve horsepower and torque throughout the entire power band. Includes an integrated stainless steel end cap with, modular inserts for fine tuning, a perforated core and light-weight, aircraft-grade canister.

» Weighs 3 lbs. less than stock

#2875729 | Performance E2 Silencer

\$399.99 us \$469.99 CAN

MODEL: Predator



**Predator K&N Air Filter »**

Long-lasting performance filter features durable construction. Completely washable and reusable.

#2874209 | K&N Air Filter

\$49.99 us \$59.99 CAN

MODEL: Predator 03-07



**Trail Tech Billet Bar Clamp and X-Bar »**

Lightweight polished billet aluminum with large predator logo on bar clamp. Fits all 1 1/8" handle bars. Ultra-strong Trailtech X-Bar.

» Bar clamp and X-Bar sold separately

#2875329 | Trail Tech X-Bar

\$69.99 us \$99.99 CAN

MODEL: Predator 2005-07, Outlaw 2006-07, Outlaw 525

#2875330 | Trail Tech Billet Bar Clamp

\$74.99 us \$104.99 CAN

MODEL: Predator MY 05-07, Outlaw MY 06-07, Outlaw 525



**Walker Evans Shocks »**

Exclusively for Polaris, Predator shocks built by off-road racing legend, Walker Evans, to conquer the rigors of hard racing. Progressive-ride, shaft-positioning, fluid control needle. 6-position compression adjustable reservoir. Dual-rate chrome silicon springs

#2874189 | Front Shocks

\$899.99 us \$1,199.99 CAN | sold as pair

MODEL: Predator 03-07



**Fox Remote Reservoir »**

Add extra performance to your Predator without buying new shocks. Increases cooling capacity, reduces shock fade and lets you add compression adjustment to stock front shocks.

#2874244 | Remote Reservoir

\$169.99 us \$229.99 CAN | sold as each

MODEL: All models with Fox Shocks



PREDATOR TRAILERING COVER



PREDATOR & OUTLAW TRAILABLE COVER

**Predator Trailing Cover »**

- » Trailing cover with large Predator logo on each side
- » Waterproof breathable 10.1 ounce duct canvas

#2874191 | Trailing Cover

\$99.99 us \$119.99 CAN

MODEL: Predator

**Predator & Outlaw Trailable Cover »**

- » Trailing cover with large Performance logo on each side
- » Waterproof breathable 10.1 ounce duct canvas

#2876866 | Trailing Cover

\$99.99 us \$139.99 CAN

MODEL: Predator & Outlaw 450/525/S/IRS



**Chrome Headlight Insert »**

Come race time, a Predator rider has to remove the headlights from the vehicle. This Headlight Insert covers and protects the headlight openings and gives your racing machine a sleek, aggressive look.

#2874697 | Chrome Headlight Insert

\$34.99 us \$44.99 CAN

MODEL: Predator



**Billet Clutch Basket »**

Hinson Racing manufactures this precision-machined basket from billet T-6 aluminum to exacting Polaris specifications, and it has withstood factory testing under grueling racing conditions. Increases performance by reducing friction and operating temperatures.

- » Alkalized 5 times for maximum water resistance

#2874698 | Clutch Basket

\$234.99 us \$329.99 CAN



**Predator Sprockets »**

Diamond-cut steel sprockets with a silver-zinc and red finish add souped-up performance and a powerful look.

#2874321 | 36 Tooth - Silver

#2874322 | 36 Tooth - Red

#2874317 | 37 Tooth - Silver

#2874320 | 38 Tooth - Red

\$27.99 us \$39.99 CAN

MODEL: Predator

#3222149 | 13 Tooth Front Sprocket

#3222153 | 15 Tooth Front Sprocket

\$19.99 us \$23.99 CAN

MODEL: Predator

# PHOENIX & SAWTOOTH

---

Polaris mid-size ATVs share the same high engineering standards as our full-size machines. So do their Pure Polaris accessories. From wheels to winches, plows to brushguards - and our exclusive, quick-attach Lock & Ride extenders, bags and windshields - the selection is huge and so is the quality and durability.





**Lock & Ride Windshield »**

This state-of-the-art windshield uses unrivaled Lock & Ride technology for a speedy, three-step installation.

#2875861 | Windshield

\$109.99 us \$139.99 CAN

MODEL: Phoenix & Sawtooth MY 08-06

#2875652 | Windshield

\$109.99 us \$139.99 CAN

MODEL: Phoenix MY 05



**Phoenix Rear Cargo Bag »**

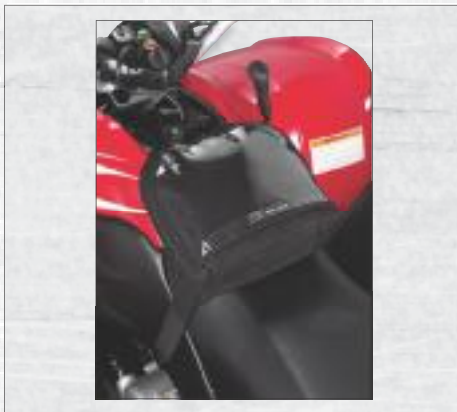
Stores and protects your gear from dirt, sand, mud, anything that's flying off the trail. Over 1 cu. ft. of storage, with easy access. Attaches in seconds.

- » 600 denier poly fabric material and padded foam
- » Water resistant
- » Rear rack sold separately

#2875651 | Rear Cargo Bag - Black

\$79.99 us \$101.99 CAN

MODEL: Phoenix



**Tank Bag »**

This water resistant bag keeps smaller items safe and dry, yet close at hand.

- » 600 denier poly fabric material
- » Attaches easily in seconds

#2875650 | Tank Bag - Black

\$49.99 us \$69.99 CAN

MODEL: Phoenix & Sawtooth



**Hand Guards »**

Specially designed for the Phoenix, featuring high-density polyethylene to keep your hands protected from trail branches.

- » Mounting hardware included

#2875655 | Hand Guards - Black

\$59.99 us \$79.99 CAN | sold as pair

MODEL: Phoenix & Sawtooth



**Sawtooth Rack Extenders »**

Extend your Sawtooth's cargo-carrying abilities on the front and back with these specially designed rack extenders.

**#2875892 | Rear - Rack Extender**

**\$29.99 us \$39.99 CAN**

MODEL: Sawtooth MY 06-08

**#2875891 | Front - Rack Extender**

**\$24.99 us \$29.99 CAN**

MODEL: Sawtooth MY 06-08



**Phoenix Rear Rack »**

Carries up to 70 lbs. of gear and equipment. Heavy-duty metal construction. Works well with all Phoenix Cargo accessories.

- » Powder coated metal finish
- » Easy installation

**#2875456 | Rear Rack**

**\$99.99 us \$139.99 CAN**

MODEL: Phoenix



**Hitch »**

Your machine can tow up to 300 lbs. with this easily installed hitch.

- » Powder coated finish
- » Accepts 3/4" shank trailer ball

**#2875457 | Hitch**

**\$49.99 us \$69.99 CAN**

MODEL: Phoenix



**Trailable Cover »**

A customized cover designed to fit perfectly and perform beautifully when trailering your ATV. Also great for protection during storage.

- » Water resistant weather protection
- » Zippered fuel fill opening

**#2875717 | Cover**

**\$49.99 us \$69.99 CAN**

MODEL: Phoenix & Sawtooth





# MAINTENANCE & GARAGE

Your Polaris ATV is built to take a pounding on the toughest terrain on earth. Keep it that way by following maintenance schedules and insisting that all the filters, oils and lubricants used in your machine are Pure Polaris. They're designed and formulated specifically for your ATV, with the highest quality ingredients to keep the engine, transmission, drive train, suspension and brakes operating at peak performance.





Riders who use automobile oils in their ATV's are risking higher wear and tear on important engine components. Car oils are not engineered to protect engines running hot through dust, dirt and mud. Only Pure Polaris oil improves engine performance through thermal stability and protects 4-stroke engines against wear and tear. Don't take our word for it – see the real-life test below. Don't trust anything less than the best for your ATV.

#### FOUR-CYCLE ENGINE OIL RECOMMENDATIONS

ATV Model Group	Recommended Oil
<i>RANGER</i> and <i>RANGER RZR</i>	PS-4 PLUS
Sportsman Series ATVs	PS-4 PLUS
Recreational ATVs	PS-4 PLUS
Youth 4-Stroke ATVs	Youth ATV
Air Cooled ATVs	PS-4 PLUS
Performance ATVs	PS-4 PLUS
Utility ATVs	PS-4 PLUS
4-Stroke Snowmobiles	PS-4 PLUS
4-Stroke PWCs	PS-4 Marine

4-CYCLE



**One oil. Many uses.**  
 The PS-4 Plus Synthetic engine oil has brought the best of our previous 4-cycle synthetics providing one oil to improve your engines performance rather than many.



**PS-4 PLUS Synthetic Engine Oil »**

Recommended engine oil for ATVs and Performance ATVs as well as all other ATV and UTV models. This oil is designed to provide superior performance in all Polaris applications, including wet clutches and gear boxes. Extreme operating temperatures generated by racing or hard riding are no problem for PS-4 Plus.

#2876244 | Quart | 12 per case

#2876245 | Gallon | 4 per case

#2876247 | 16 Gallon

#2876246 | 55 Gallon

2-CYCLE



**VES Gold Synthetic 2-Cycle Oil »**

Meets our high standards for clean burning, low odor, smokeless oils and provides outstanding all-temperature exhaust-valve performance at high RPMs. High-lubricity formula provides excellent low temperature flow, while durable detergent additives provide maximum protection at high temperatures.  
 » Meets category 4 low temperature requirements

#2874438 | Quart | 6 per case

#2874439 | Gallon | 4 per case

#2874443 | 2.5 Gallon | 2 per case

#2874440 | 16 Gallon

#2874441 | 55 Gallon

4-CYCLE



**Youth ATV Oil »**

The new 4-cycle Youth ATVs deliver high output in extreme operating conditions. Youth ATV Oil is formulated to provide protection from high-heat and oxidation as well as offering superior wear protection.

#2876248 | Quart | 6 per case





**ATV Oil Change Kits »**

We recommend you change the oil in your ATV after every 100 hours of use, or more often after severe use (water, mud, extreme heat or cold). This convenient kit contains everything needed.

- » Kit includes: 2 one-quart bottles of PS-4 PLUS 4-cycle Synthetic engine oil, oil filter, oil changing instructions.

#2876738 | Single Cylinder

#2202166 | Twin Cylinder



**Predator & Outlaw 500 Oil Change Kit »**

Keep your machine at peak performance by changing the oil at recommended intervals. This kit includes everything you need.

- » Kit includes: 3 1-quart bottles of Pure Polaris 4-cycle PS-4 Plus Synthetic Engine Oil, oil filter, drain-plug gasket, oil changing instructions

#2202511 | 4 per case



**Hydraulic Clutch Fluid »**

Recommended fluid for the clutch on the Outlaw 525. This special fluid eliminates many of the problems associated with the use of brake fluid. Brake fluid is not compatible with the clutch seals and o-rings and should not be used.

#2876335 | Quart | 1 bottle per case



**Mid-size ATV Oil Change Kits »**

- » Kit includes: 3 1-quart bottles of Pure Polaris 4-Cycle PS-4 Plus Synthetic Engine Oil, oil filter, oil changing instructions.

#2875870 | Sportsman 300 & Hawkeye

#2875523 | Phoenix & Sawtooth



**LT Demand Drive Fluid »**

Engineering specified fluid for the Front Angle Drives on ATVs and UTVs equipped with ADC. Provides all possible protection from rust and corrosion while ensuring proper performance of the Demand Drive System.

#2876251 | Quart | 12 per case



**ADC (Active Decent Control) Fluid »**

Engineering specified fluid for the ADC unit located inside the Front Angle Drive housing. This small volume, bleed-able unit, has an initial fill of 1.7 ounces.

#2876144 | Quart | 1 bottle per case



**ATV Angle Drive Fluid »**

High viscosity Pure Polaris Angle Drive Fluid protects your angle drive from extreme pressure and high-wear conditions.

#2876160 | Quart | 12 per case

#2872276 | 2.5 Gallon | 2 per case



**Grease Gun »**

An easy, effective way to get at hard-to-reach grease fittings. Steel construction, with a compact pistol grip design for easy operation. Custom hose and fittings accept both 6" rigid pipe-nozzle and 12", 12,000 psi flex-hose. Standard zerk fitting.

#2871312 | 4 per case



**Premium Antifreeze »**

Formulated specifically for Polaris high-performance cooling systems, our anti-freeze protects against corrosion, gel formation and hard water deposits.

#2871534 | Quart | 12 per case

#2871323 | Gallon | 6 per case

#2872278 | 55 Gallon



**Demand Drive Fluid »**

This Polaris-developed fluid ensures a positive engagement and release of Polaris demand-drive systems.

#2871654 | Quart | 12 per case

#2872277 | 2.5 Gallon | 2 per case



**Premium Fuel Stabilizer »**

An essential additive whether your machine is on the trail or stored away in the garage. Prevents gasoline oxidation and fuel system corrosion and protects yellow-metal and rubber-fuel system components while significantly reducing gum and varnish formation. Formulated specifically for 2-cycle and 4-cycle Polaris engines.

#2870652 | Quart | 12 per case



**Isopropyl Fuel De-Icer »**

Extremely cold conditions call for an extremely effective fuel de-icer. This high-tech additive is formulated for 2-cycle and 4-cycle Polaris engines. Prevents fuel-line freezing even in the lowest temperatures.

» 1/2 oz. treats one gallon of fuel

#2870505 | Quart | 12 per case



**Fogging Oil »**

Fogging is vital for getting your vehicle ready for storage in the off-season. It protects against rust and corrosion on internal and external engine parts during extended periods of non-use, and effectively displaces and resists water and moisture. The stable residual film maintains a "friendly" surface for engine oil.

- » For all 2-cycle and 4-cycle applications

#2870791 | 12 oz. Aerosol Can | 12 per case



**Chain Lube »**

Provides superior anti-wear and shock protection for extended chain and sprocket life. Resists dirt and water.

#2872348 | 16 oz. | 12 per case



**Premium Grease »**

**All Season Premium Grease**

#2871322 | 3 oz. | 4-pack - 6 per case

#2871423 | 14 oz. | 10 per case

**Premium Starter Grease**

#2871460 | 2 oz. | 12 per case

**Premium U-Joint Grease**

#2871515 | 3 oz. | 24 per case)

#2871551 | 14 oz. | 10 per case)



**Carbon Clean Fuel Treatment »**

Blasts away fuel system deposits with a vengeance. This patented additive displaces moisture and works as an excellent fuel stabilizer during storage.

- » Formulated for 2-cycle and 4-cycle engines
- » 1 ounce treats 1 gallon of fuel

#2871326 | 12 oz. - liquid | 12 per case

#2870971 | 12 oz. - spray | 12 per case



**Premium Synthetic AGL Gear Lube »**

Quite simply, our gear case lubricant provides the best available synthetic protection for transmission components against rust, corrosion and wear in extreme operating conditions.

#2873602 | Quart | 12 per case

#2873603 | Gallon | 4 per case

#2873604 | 2.5 Gallon | 2 per case



**Brake Fluid »**

Designed for Polaris hydraulic brakes, delivering superior performance, even in high temperatures. Anti-corrosive additives extend the life of brake system and ensure consistent, positive braking.

#2870990 | DOT 3, 12 oz. Bottle | 12 per case

#2872189 | DOT 4, 12 oz. Bottle | 12 per case



**All Purpose Cleaner »**

Removes road film, soil, grime and grease without affecting painted surfaces or streaking.

- #2855667 | 1 Gallon | 4 per case
- #2855668 | 5 Gallon | 4 per case
- #2855669 | 30 Gallon | 4 per case



**Heavy Duty Cleaner »**

Removes dirt, oil, tar, ink, paint and grease from floors, walls, equipment, parts and engine parts, ideal for water-based parts washer.

- #2855664 | 1 Gallon | 4 per case
- #2855665 | 5 Gallon | 4 per case
- #2855666 | 30 Gallon | 4 per case



**Vehicle Wash »**

Superior cleaning ability on heavy mud, road film and grease in all water conditions, dries streak and spot free.

- #2855660 | 1 Gallon | 4 per case
- #2855661 | 5 Gallon | 4 per case
- #2855662 | 30 Gallon | 4 per case



**K&N Air Filters »**

Our K&N Air Filters are less restrictive than the stock unit, enhancing intake airflow without sacrificing filtering efficiency. Reusable.

- A. #2871786 | K&N Air Filter**  
**\$44.99 us \$54.99 CAN**  
 MODEL: Sportsman 335/400/500/600/700/800, Xplorer 500, Sportsman 6X6, Scrambler 500, Xpedition 325/425, Magnum 325/425, Trail Boss 325 (2000-01), Diesel
- B. #2871508 | K&N Air Filter**  
**\$39.99 us \$49.99 CAN**  
 MODEL: Magnum 425, Scrambler 400, Sport, 400L, Big Boss 500, Xplorer 400, 1999 Xplorer 400
- C. #2871509 | K&N Air Filter**  
**\$39.99 us \$49.99 CAN**  
 MODEL: Sportsman 400, Trail Boss 250, Xpress/ Xplorer 300/400, Trail Blazer, 400L 6X6, 1997-prior
- D. #2874209 | K&N Air Filter**  
**\$49.99 us \$69.99 CAN | MODEL: Predator MY 05-08**
- E. #2875935 | K&N Air Filter**  
**\$49.99 us \$69.99 CAN | MODEL: Outlaw 500 MY 05-08**
- F. #2876739 | K&N Air Filter**  
**\$49.99 us \$69.99 CAN | MODEL: Outlaw 525/IRS MY 08**
- #2871510 | K&N Recharge Kit - to clean air filter**  
**\$12.99 us \$15.99 CAN**



**K&N Oil Filters »**

These oil filters are specially developed for high performance vehicles. The ultra-modern synthetic filter media is designed for ultimate flow with less pressure drop and is compatible with all synthetic racing oils. Unaffected by racing fuels.

- #2875158-070 | K&N Oil Filter**  
**\$12.99 us \$18.99 CAN**  
 MODEL: Sportsman 500 HO/500 EFI
- #2875170-070 | K&N Oil Filter**  
**\$12.99 us \$18.99 CAN**  
 MODEL: Sportsman 600/700, Sportsman 600/700/800 EFI



**Oil Filter »**

Manufactured to a higher standard, this filter traps smaller particles to keep your oil cleaner, and is designed to better handle the oil volume and flow of Polaris engines.

- #3084963 | \$6.99 us \$10.99 CAN**  
 MODEL: All 4-stroke models except Sportsman 600/700/800 and Predator
- #2540086 | \$9.99 us \$14.99 CAN**  
 MODEL: Sportsman 600/700/800 and Predator



**Air Filters**

Designed to trap tiny particles but still allow the engine to breathe properly.

#7080595 | \$14.99 us \$19.99 CAN

MODEL: 4-stroke models (except 325/330)

#1253355 | \$22.99 us \$29.99 CAN

MODEL: 2-stroke models (except Scrambler 400, 2x4, MY 02-03 Trailblazer 400)

#1253118 | \$9.99 us \$13.99 CAN

MODEL: Scrambler 400, 2x4, 2002-30 Trailblazer 400

#1253372 | \$14.99 us \$19.99 CAN

MODEL: 325, 330



**Chains & Sprockets**

These high-tech chains and sprockets are computer designed to close tolerances for proper performance. They are manufactured from zinc-plated, high-tensile strength, heat-treated steel for unsurpassed durability and corrosion resistance. Features an O-ring design to retain lubricant. O-Ring (3224056, 322111, 3221151, 3221153) has: High carbon alloy pins, solid bushings, shot-peened plates and rollers, "gold" outer plates, and is re-stretched.

Rear Sprockets Starting at \$24.99 us \$44.99 CAN

Front Sprockets Starting at \$24.99 us \$44.99 CAN

Drive Chain Starting at \$24.99 us \$44.99 CAN

**Standard Battery**

NOT SHOWN

Our standard ATV batteries have good cranking amps for all starting applications, plenty of reserve capacity for accessories and an easy-to-see electrolyte check. They fit most Polaris ATVs – 1985 to present.

**YB14A-A2 4140006**

This battery is designed to withstand severe vibrations and has a Yumicron® Separator that provides 30% more cranking power than a standard conventional battery, as well as a special chemical that's added to the battery to resist the formation of sulfation on the plates. Cold cranking ampere: 0° F (-18° C), 190 amp; 32° F (0° C), 230 amp. Reserve Capacity 15 Min. Made in the U.S.A.

**YB30L-B (4010630)**

This battery has both a patented separator to provide improved cranking power and a patented sealed post that prevents acid and reduces corrosion for extended battery life. A heavy duty glass mat resists shedding of active material during vibration and a tough polypropylene cover and container provide superior impact resistance in extreme weather conditions. Cold cranking ampere: 0° F (-18° C), 300 amp.

#4140006 | \$52.99 us \$76.99 CAN

MODEL: all models (except Sportsman 600/700)

#4010630 | \$92.99 us \$113.99 CAN

MODEL: Sportsman 600/700

#4010774 | \$72.99 us \$109.99 CAN

MODEL: All Sportsman MY 04 (except Sportsman 600/700)

#4010678 | \$78.99 us \$109.99 CAN

MODEL: Predator



**Prefilter**

Slip this over your stock air filter and it will pre-filter intake air on your machine and extend the life of your air cleaner. It is water repellent and can be cleaned and reused many times.

#5811633 | \$8.99 us \$12.99 CAN

MODEL: fits all 4-stroke models except 325/330 and Predator



**Drive Belts**

Designed, engineered and tested specifically for your Polaris ATV. Polaris belts have the lowest tolerances (.188") providing the most consistent performance. Precision measured to ensure stringent tolerances are met for both length and width.

#3211077 | \$39.99 us \$59.99 CAN

MODEL: Fits all non-EBS

#3211069 | \$39.99 us \$59.99 CAN

MODEL: Sportsman EBS MY 01-prior, Magnum 500 4x4, ATP 500

3211091 | \$44.99 us \$64.99 CAN

MODEL: Sportsman 600/700/800 MY 02-08

#3211095 | \$44.99 us \$64.99 CAN

MODEL: Sportsman 500 MY 02-08

**Bulk Chain**

NOT SHOWN

50 ft. roll comes with 20 connecting links.

#2872276 | \$599.99 us \$109.99 CAN



**Blue Xenon Headlight Bulbs »**

More than 50% brighter than stock headlight bulbs. They are 98% xenon gas, 12 volt, 50 watt bulbs.

#2876464 | \$26.99 us \$32.99 CAN

**Quartz Halogen Headlight Bulb**

Replacement Bulb for your Sportsman ATV.

#2870448 | \$9.99 us \$14.99 CAN



**Fuel Gage Cap »**

#2871441 | \$16.99 us \$24.99 CAN

MODEL: *Magnum 425, Scrambler 500, 500 6x6 (Short) MY 1998-99*

#2871442 | \$16.99 us \$24.99 CAN

MODEL: *Xplorer 400, Scrambler 400 Sport, Trail Blazer (long)*  
\*Not Available for Sportsman models



**Electronic Speedometers »**

Speed demon? Acceleration junkie? Find out just how fast and how far you're going with the precision of these technologically engineered speedometers.

#2874494 | \$229.99 us \$349.99 CAN

MODEL: *Trail Boss, Magnum, 330 (mph)*

#2874495 | \$229.99 us \$349.99 CAN

MODEL: *Trail Boss, Magnum, 330 (kph)*

#2872323 | \$229.99 us \$349.99 CAN

MODEL: *Scrambler 500, 2x4, 4x4, MY 1999-04*

#2873590 | \$229.99 us \$349.99 CAN

MODEL: *Magnum 325, 2x4, 4x4, MY 01-02*

#2874850 | \$229.99 us \$349.99 CAN

MODEL: *Scrambler 500 MY 04-07*

#2874861 | \$229.99 us \$349.99 CAN

MODEL: *Trailblazer MY 04-06*



**Pro Mechanical Roll Seat »**

This mechanic seat is ideal to use when servicing your recreational vehicle. It has built in tool trays that include slots for your screwdriver or any other tool, plus a convenient drink holder. This seat is made of heavy-duty plastic and rolls smoothly on its high-durometer wheels. It also has a revolutionary rubber seat that is resistant to oil and other chemicals.

#2855790 | \$89.99 us \$119.99 CAN



**Battery Charger »**

Reliable charges without damaging overcharging or boiling.

#2859044 | \$59.99 us \$79.99 CAN





**Portable Inverter Generators »**

Our inverter generators create crisp power waves, ideal for use with sensitive electronics such as computers and appliances when camping, at a job site or at home during a power outage. Compact and lightweight, they are powered by air-cooled 4-cycle OHV gasoline engines, with soundproof engineering for low noise levels. Designed for low fuel consumption and meet strictest environmental regulations.

#2855760 | P1700i Inverter (700 Watts, Portable)

\$1,049.99 us \*Not available in Canada

#2855761 | P1700i Inverter (2,800-4,300 Watts)

\$2,099.99 us \*Not available in Canada

#2855762 | P1700i Inverter (3,800-4,300 Watts)

\$2,999.99 us \*Not available in Canada



**Electronic Start Generators »**

This durable, easy to start gasoline-powered generator delivers consistent AC power, making it perfect for use on a job site or around the house. Powered by an air-cooled, 4-cycle OHV engine. Choose the level of performance you need, depending on the power required to run your electrical equipment. Compact and lightweight, they have low fuel consumption and low noise levels, and are designed to meet the strictest environmental regulations.

#2855713 | P2900 Generator 2,400-2,900 Watts

\$1,149.99 us \*Not available in Canada

#2855714 | P4800E Generator 3,700-4,300 Watts

\$1,999.99 us \*Not available in Canada

#2855705 | P6100E Generator 4,800-5,800 Watts

\$2,279.99 us \*Not available in Canada

#2855707 | P7500E Generator 6,000-7,300 Watts

\$2,629.99 us \*Not available in Canada

#2855708 | P12000E Generator 10,000-12,000 Watts

\$4,079.99 us \*Not available in Canada





# APPAREL

---

When you ride the world's best ATVs, naturally you're going to want to wear the world's most comfortable ATV apparel -- Pure Polaris apparel. For riding the dunes, the wooded trails or the mountains, hitting it hard in the heat of summer or going the distance in bone-chilling temperatures of winter, we've got you covered. With premium quality helmets, goggles, gloves, jackets, pants, base layers and, of course, ballcaps and T-shirts.



**YOU SHOULD KNOW:**

Helmets fit very differently depending on head shape, helmet style and manufacturer. You'll probably want to try on a variety of styles from different manufacturers to find the best fit, so be prepared for the process to take up to an hour or more. It's worth it. Also, any eyewear worn while riding should be worn when fitting a helmet. Now you're ready for the exam.

**Hat Size:**

Hat size is a good place to begin when selecting a helmet. If you don't know yours, ask your dealer for a sizing chart.

**Pressure:**

Once you have placed the helmet on your head, you may experience gentle overall pressure, which is normal. Pain is not, so try on a different helmet or a larger size in this case.

**Position:**

Ensure that the helmet is sitting squarely on your head, tilted neither too far forward nor too far back.

**Chinstrap:**

Tighten the chinstrap, if you can fit a finger or two between your chin and the strap, it's too loose. It should be snug, but not chokingly tight while riding.

**Cheekpads:**

If you are trying a full-face or three-quarter helmet, the cheek pads should press against the cheeks slightly without causing discomfort or pushing too hard.

**Inner Lining:**

Make sure the inner lining of the helmet fits snugly all the way around the head.

If there are gaps or pressure points, try a different helmet size or style or a helmet from another manufacturer.

**Move It:**

Move the helmet from side to side. Your scalp and skin should move with it. If it moves too easily without resistance, the helmet is too large and you should move on to another one.

**Red Spots:**

Now, if your helmet has passed all previous steps, wear it around the dealership for a full 10-15 minutes. Take it off. Any sore or red spots on your face or head? These pressure points could cause long term irritation and pain, so pick another helmet and give it the eight step test.



**Demon Helmet »**

Extreme riders, this helmet is for you. It's our latest design, featuring skull graphics and camo on a flat-matte background.

**Shell:** Lightweight Polycarbonate.

**Vents:** Mouth, side, forehead, crown and rear vents.

**Interior:** Moisture wicking and removable, washable liner. Integrated, rubber, nose guard.

**Snow Mask:** Included (#2868219).

**Additional Feature:** Snow mask. Quick-release strap. Goggle strap guide. Quick-adjust visor.

**Safety:** DOT/ECE approved.

#2868071 | Red Matte

#2868073 | Silver Matte

\$169.99 us \$194.99 CAN | S -2XL

**ADDITIONAL COLOR OPTIONS:**



- SILVER MATTE

**POLARIS HELMET TECHNOLOGY**

Quality, comfort and fit. Those are the standards you should look for in a helmet, and the standards you'll find in helmets by Pure Polaris. Polaris helmets are designed to be lightweight yet provide maximum impact safety. They also deliver optimal visibility and ventilation. Many feature complete flow-thru ventilation systems for exceptional cooling, with vents at the mouth, side, forehead, crown and rear. Plus quick-adjust straps and visors, and removable, washable liners to keep them clean and comfortable. ■





MOMENTUM HELMET - PINK MATTE



DRAGON HELMET- WHITE MATTE

**Momentum Helmet »**

Lightweight, nasty sweet graphics, perfect for riding trails on your sled or ATV. No wonder this is one of our top-selling helmets.

**Shell:** Lightweight, alloy polycarbonate.

**Vents:** Mouth air intake vent, forehead and rear vents.

**Snow Mask:** Optional (#2853472).

**Interior:** Removable, washable Duralux liner. Integrated nose guard.

**Additional Feature:** Adjustable visor.

**Safety:** Snell M2005/DOT approved.

#2868077 | Pink Matte

#2868075 | Red Matte

#2868076 | Blue Matte

\$129.99 us \$149.99 CAN | S -3XL

#2868078 | Black Matte

\$124.99 us \$144.99 CAN | S -3XL

ADDITIONAL COLOR OPTIONS:



- RED MATTE



- BLUE MATTE



- BLACK MATTE

**Dragon Helmet »**

Similar to Momentum helmet, with the addition of sick dragon graphics used on Polaris race gear.

**Shell:** Lightweight, alloy polycarbonate.

**Vents:** Mouth air intake vent, forehead and rear vents.

**Snow Mask:** Optional (#2853472).

**Interior:** Removable, washable Duralux liner. Integrated nose guard.

**Additional Feature:** Adjustable visor.

**Safety:** Snell M2005/DOT approved.

#2868080 | White Matte

#2868079 | Dragon Factory Race Orange Matte

\$149.99 us \$174.99 CAN | S -3XL

ADDITIONAL COLOR OPTIONS:



- DRAGON FACTORY RACE ORANGE MATTE



DEFENDER HELMET - WHITE SS MATTE



MOSSY OAK® BREAK-UP HELMET

**Defender Helmet »**

Aggressive styling designed for ATV and snowmobile riding, at an affordable price.

**Shell:** Lightweight, alloy polycarbonate.

**Vents:** Mouth air intake vent.

**Interior:** Removable, washable Duralux liner.

**Additional Feature:** Aerodynamic visor, reduces glare.

**Safety:** DOT approved.

#2868081 | White SS Matte with Skull Graphics

#2868383 | Blue

#2868282 | Red

#2868484 | Silver

\$99.99 us \$114.99 CAN | S - 3XL

#2868085 | Black

\$94.99 us \$109.99 CAN | S - 3XL

ADDITIONAL COLOR OPTIONS:



**Mossy Oak® Break-up Helmet »**

Similar to the Defender Helmet, with the addition of Mossy Oak New Break-Up Brand camo.

**Shell:** Lightweight, alloy polycarbonate.

**Vents:** Mouth air intake vent.

**Interior:** Removable, washable Duralux liner.

**Additional Feature:** Aerodynamic visor, reduces glare.

**Safety:** DOT approved.

#2868419 | Mossy Oak® Break-up

\$149.99 us \$179.99 CAN | S - 3XL



PURSUIT HELMET- RED

**Pursuit Helmet »**

This helmet delivers value with a capital V. It's affordable, with all the right features.

**Shell:** Injected thermoplastic resin.

**Vents:** Mouth, forehead, and rear vents.

**Interior:** Removable, washable liner.

**Additional Feature:** Aerodynamic visor, reduces glare.

**Safety:** DOT approved.

#2868381 | Red

#2868382 | Blue

#2868383 | Silver

\$79.99 us \$89.99 CAN | S - 2XL

#2868384 | Black

\$74.99 us \$84.99 CAN | S - 2XL

ADDITIONAL COLOR OPTIONS:



- BLUE

- SILVER

- BLACK

**Helmet Replacement Parts**

Helmet Models	Part #	MY	US	CAN
<b>DEMON HELMET</b>				
Snow Mask	#2868219	'08	\$12.99	\$19.99
Replacement Visor - Red	#2868220	'08	\$19.99	\$24.99
Replacement Visor - Silver	#2868221	'08	\$19.99	\$24.99
Visor Screw Kit	#2868222	'08	\$9.99	\$14.99
<b>MOMENTUM HELMET</b>				
Replacement Visor - Red Matte	#2868223	'08	\$19.99	\$24.99
Replacement Visor - Blue Matte	#2868224	'08	\$19.99	\$24.99
Replacement Visor - Pink Matte	#2868225	'08	\$19.99	\$24.99
Replacement Visor - Race Orange Matte	#2868226	'08	\$19.99	\$24.99
Replacement Visor - White Matte	#2868227	'08	\$19.99	\$24.99
Replacement Visor - Black Matte	#2868228	'08	\$19.99	\$24.99
Visor Screw Kit	#2852470	'06-'08	\$2.99	\$4.99
<b>DEFENDER HELMET</b>				
Replacement Visor - Red	#2868229	'08	\$19.99	\$24.99
Replacement Visor - Blue	#2868230	'08	\$19.99	\$24.99
Replacement Visor - Silver	#2868231	'08	\$19.99	\$24.99
Replacement Visor - White Matte	#2868232	'08	\$19.99	\$24.99
Replacement Visor - Black	#2868233	'08	\$19.99	\$24.99
Visor Screw Kit	#2852470	'06-'08	\$2.99	\$4.99
<b>PURSUIT HELMET</b>				
Replacement Visor - Red	#2868454	'08	\$19.99	\$24.99
Replacement Visor - Blue	#2868455	'08	\$19.99	\$24.99
Replacement Visor - Silver	#2868456	'08	\$19.99	\$24.99
Replacement Visor - Black	#2868457	'08	\$19.99	\$24.99
Visor Screw Kit	#2858458	'08	\$6.99	\$8.49
<b>YOUTH MX</b>				
Replacement visor - Silver	#2868234	'08	\$9.99	\$14.99
Replacement visor - Black	#2868235	'08	\$9.99	\$14.99
<b>2006 ITEMS</b>				
Defender Visor - Blue	#2856706	'06	\$19.99	\$24.99
Defender Visor - Neutral	#2856705	'06	\$19.99	\$24.99
Defender Visor - Red	#2856707	'06	\$19.99	\$24.99
Defender Visor - Solid Black	#2856704	'06	\$19.99	\$24.99
Momentum Visor - Yellow	#2856708	'06	\$19.99	\$24.99
Momentum Visor - Silver	#2856452	'06	\$19.99	\$24.99
Momentum Visor - Blue	#2856451	'06	\$19.99	\$24.99
Momentum Visor - Blue Matte	#2856703	'06-'07	\$19.99	\$24.99
Momentum Visor - Red Matte	#2856453	'06-'07	\$19.99	\$24.99
Momentum Visor - Silver Matte	#2867498	'07	\$19.99	\$24.99
Momentum Visor - Red	#2856450	'06	\$19.99	\$24.99
Factory Race Orange	#2867135	'07	\$19.99	\$24.99

A



SMITH VSN GOGGLES - RED



SMITH VSN GOGGLES - SILVER



SMITH VSN GOGGLES - BLACK

B



QUICK RELEASE GOGGLE STRAPS



B

SPYDER FX® HELMET CAM



D

TECH ARMOR

**A. Smith VSN Goggles**

These quality goggles deliver outstanding features for the ultimate in off-road protection and visibility, all at a great price. They have a clear Lexan lens, 2-layer face foam for all-day comfort and an ultra-wide, silicone-backed strap.

- #2868412 | Red
  - #2868413 | Silver
  - #2868414 | Black
- \$26.99 us \$32.99 CAN | One Size Fits Most

- #2868415 | Single Clear Replacement Lenses
  - #2868416 | Single Yellow Replacement Lenses
  - #2868417 | Single Blue Replacement Lenses
  - #2868418 | Single Lens Tear Offs
- \$6.99 us \$7.99 CAN

**B. Spyder FX® Helmet Cam**

A complete video recording system with camera and Mini-DVR that attaches to virtually any helmet or visor with custom PSA heavy velcro mounting system that leaves no marks. 640 x 480 resolution video at 30fps in recording and playback modes. Up to 3 hours of recording time with standard Gb SD Card. The Mini-DVR housed in rugged, submersible, waterproof casing. 3 hours of battery life provided by a rechargeable Lithium Ion battery. 1-year factory warranty

- #2859555 | Helmet Cam
- \$849.99 us \$999.99 CAN

**C. Quick Release Goggle Strap**

Remove your goggles with quickly and easily.

- #2855432 | Fast Strap Set
- \$12.99 us \$17.99 CAN

**D. Tech Armor**

Extremely high-tech, durable ABS plastic body armor is essential for a safe ride. Ergonomically designed to keep you tough on the outside and comfortable on the inside. Adjustable shoulder pads. Removable arm shields.

- #2854185 | Adult - Tech Armor
- \$109.99 us \$124.99 CAN | One Size Fits Most

**E** ULTIMATE GLOVE



- BLACK - RED - BLUE - YELLOW

**F** MOTO GLOVE



- BLACK - RED - BLUE - YELLOW

**G** PURSUIT GLOVE



- BLACK - RED - BLUE - YELLOW

**H** POLARIS PERFORMANCE RIDING JERSEY



**H. Polaris Performance Riding Jersey »**

- » 100% Polyester
- » Padded cuffs, moisture managing detail

#2846444 | Black/Red

\$49.99 us \$59.99 CAN | Men's S - 2XL

**I** SPRAY PAINT JERSEY



**I. Spray Paint Jersey »**

- » 100% Polyester

#2867400 | Black/Red

\$49.99 us \$59.99 CAN | Men's S - 2XL

**E. Ultimate Glove**

**Shell:** Spandex.

**Waterproof Breathable:** Outer membrane protects against wind.

**Additional Features:** Reinforced, double-layer synthetic leather palm with gel padding, neoprene knuckles provide added mobility. Silicone fingertips give you superior grip, Polaris rubber logos on back of hand and wrist.

#2856534 | Black

#2856535 | Red

#2856536 | Blue

#2856537 | Yellow

\$39.99 us \$49.99 CAN | Men's S - 2XL

**F. Moto Glove**

**Shell:** Spandex.

**Waterproof Breathable:** Outer membrane protects against wind.

**Additional Features:** Polaris rubber logos on back of hand and wrist, reinforced palm gel padding and stitching, synthetic leather palm silicone thumb and two fingertips for better grip

#2856538 | Black

#2856539 | Red

#2856540 | Blue

#2856541 | Yellow

\$24.99 us \$29.99 CAN | Men's S - 2XL

**G Pursuit Glove**

**Shell:** Spandex.

**Waterproof Breathable:** Outer membrane protects against wind.

**Additional Features:** Injected rubber pads on the palms to minimize vibration. Foam padded fingers to give them the same benefit and silicone gripper fingertips for total control at the wheel.

#2867266 | Black

#2867267 | Red

#2867268 | Blue

#2867269 | Yellow

\$24.99 us \$29.99 CAN | Men's S - 2XL

**A** WINDBLOC JACKET



**B**

MEN'S ASCENT SOFTSHELL JACKET



**C**

WOMEN'S ASCENT SOFTSHELL JACKET

**A. Windbloc Jacket** - uninsulated

The ultimate fleece because it adds warmth, blocks the cold wind and is breathable. Perfect for layering under your jacket or as casual wear when the ride is over.

**Shell:** Three-layers, outer fleece, wind-blocking laminate and red interior fleece.

**Windproof Breathable:** (3000mm/3000g) fabric delivers windproof and breathable performance.

**Pockets:** Two handwarmer pockets, left chest pocket.

#2868037 | Black

\$129.99 US \$149.99 CAN | Men's S - 2XL

**B. Ascent Softshell Jacket** - uninsulated

The perfect light jacket. Use it for layering in cold weather, for ATV riding in spring and fall, and for casual wear, anywhere.

**Shell:** Three-layered; hard-face outer with ripstop texture, soft fleece and windproof layer.

**Windproof/Waterproof Breathable:** (3000mm/3000g) fabric delivers windproof, waterproof and breathable performance.

**Pockets:** Two handwarmers and one chest pocket.

**Additional Features:** Drawcord waist helps keep wind out. Polaris logo on chest.

#2868003 | Men's Gray

\$119.99 US \$129.99 CAN | Men's S - 3XL\*  
\*Includes Talls (L-2XL)

**C. Women's Ascent Softshell Jacket** - uninsulated

Cut for a woman, this jacket is waterproof and breathable, making it ideal for layering or casual wear.

**Shell:** Three-layered; hard-face outer with ripstop texture, soft fleece and windproof layer.

**Windproof/Waterproof Breathable:** (3000mm/3000g) fabric delivers windproof, waterproof and breathable performance.

**Pockets:** Two handwarmer pockets.

**Additional Features:** Drawcord waist helps keep wind out. Polaris logo on chest.

#2868025 | Women's Pink

\$99.99 US \$114.99 CAN | Women's S - 2XL





**D** ASCENT SOFTSHELL BIB

**E** VERTICAL ASSAULT PANT



**F**

XTREME II BOOT



**G**  
- COOLMAX  
BOOT CUT SOCK

**H**  
- OUTLAST  
CREW SOCK

**I**  
- THERMAX  
SOCK

**D Ascent Softshell Bib** - uninsulated  
Waterproof and breathable, it's the bib of choice for ATVs or riding sleds in milder weather.

**Shell:** Flexible, four-way stretch, polyester.  
**Waterproof Breathable:** (8000mm/5000g).

**Pockets:** Two zippered front pockets, one zippered back pocket.

**Additional Features:** Waterproof zippers, adjustable leg gaiters, zip-off suspenders let you wear as bibs or pants.

**Safety:** 3M® reflective ellipse.

#2855213 | Black

\$169.99 us \$194.99 CAN | Men's S - 3XL\*  
\*Includes Talls (L - 2XL)

**G. Coolmax Boot Cut Sock**

» 75% Coolmax®, 20% stretch nylon, 5% elastic

#2867124 | Black

\$17.99 us \$24.99 CAN | One Size Fits Most

**E. Vertical Assault Pant** - uninsulated  
Our top-of-the-line riding pant for those who prefer pants to bibs, especially in warmer temperatures.

**Shell:** 420 denier Oxford nylon / 660 denier Taslan®.  
**Waterproof Breathable:** (8000mm/5000g).

**Pockets:** Two handwarmer and two cargo pockets.

**Additional Features:** Removable knee armor, fully taped seams, waterproof zippers, stretch panels on knees and waist, silicone grippers on inner knees, Velcro® side waist adjustments, boot loop to secure bib to boot, adjustable leg gaiters.

**Safety:** 3M® reflective ellipse.

#2867038 | Black

\$229.99 us \$264.99 CAN | Men's S - 3XL\*  
\*Includes Talls (M - XL)

**H. Outlast Crew Sock**

» 83% Outlast®, 12% stretch nylon, 5% elastic

#2867123 | Black

\$19.99 us \$24.99 CAN | One Size Fits Most

**F. Xtreme II Boot**

**Upper:** Leather.

**Sole:** High traction rubber.

**Insulation:** 990g Thinsulate™.

**Comfort Rating:** -70° F.

**Additional Features:** AquaPlus waterproof breathable

#2853606 | Black

\$119.99 us \$139.99 CAN | Sizes 7 - 14

**I. Thermax Sock**

» 59% polypropylene, 26% nylon, 15% elastic

#2867122 | Gray

\$12.99 us \$14.99 CAN | One Size Fits Most



eVent®



Adjustable Back Drawcord



Wrist Snaps



Chamois Cloth



Zipper Garages

ADDITIONAL COLOR OPTIONS:



- CHARCOAL/GRAY

- RED/GRAY



Snaps On Bottom



Strapping System



Interior Mesh



A

MOUNTAIN eVT JACKET - GRAY CAMO



B

MOUNTAIN eVT BIB - GRAY

MOUNTAIN eVT BIB - BLACK



**A. Mountain eVT Jacket** - uninsulated

This next generation Mountain jacket, featuring eVent® fabrics, breathes faster than Gore-Tex® and other waterproof fabrics. Equipped with more features, including full zip vents and extra pockets. Add a Polaris layering system to ride warm and dry all day.

**Shell:** 100% Nylon Shell

**Waterproof Breathable:** eVent® fabric

**Insulation:** Non-insulated, mesh lined.

**Venting:** Full zip vents at underarm and back (vertical vents, won't interfere with backpack).

**Pockets:** Three exterior pockets, one with chamois cloth inside to wipe goggles/shield, two interior pockets.

**Additional Features:** Waterproof two-way front zipper, zipper garages on exterior pockets create tight seal. Microfleece rollover collar for rider comfort. Snow skirt, neck drawcord and adjustable back drawcord keep snow out. Wrist snaps reduce ice buildup.

**Safety:** 3M® reflective piping and ellipse patches.

#2868002 | Gray / Camo

#2868201 | Charcoal / Gray

#2868001 | Red / Gray

\$349.99 US \$399.99 CAN | Men's S - 3XL\*

\*Includes Talls (M - XL)

**B. Mountain eVT Bib** - uninsulated

Designed by Polaris engineers and features premium eVent® fabrics, the latest in waterproof breathable technology. Together with comfort-driven details including a Neoprene harness with Velcro® straps, its uninsulated, lightweight construction makes it ideal for layering. Wear with coordinating jacket and turn a good day into a great day of riding.

**Shell:** 100% Nylon Shell

**Waterproof Breathable:** eVent® fabric

**Insulation:** Non-insulated, lightweight construction for mountain riding.

**Pockets:** Two exterior pockets.

**Additional Features:** Fully mesh-lined, neoprene harness with Velcro® instead of buckles, crossable straps to prevent pectoral irritation, elastic back, waterproof two-way front zipper, full-length side zipper opens to hip, zipper garages, cuff straps with snaps for snug fit around boots, gaiters with snaps.

#2868031 | Gray

#2868236 | Black

\$349.99 US \$399.99 CAN | Men's S - 3XL\*

\*Includes Talls (M - 2XL)





**C** BARRIER FLEECE VEST

**E** BARRIER FLEECE PANT



**D** POLARTEC® RIDING SHIRT

**F** POLARTEC® RIDING PANT

**C. Barrier Fleece Vest**

- » Anti-pill microfleece
- » Drop tail hem
- » Elasticcord hem that cinches jacket around hips to seal in warmth
- » Multiple storage pockets

#2856115 | Black

\$49.99 us \$59.99 CAN | S - 2XL

**E. Barrier Fleece Pant**

- » Anti-pill microfleece
- » Nylon seat overlay for extra protection
- » Center front fly with snap closure
- » Elastic leg cuffs
- » Easy access cargo and back pockets

#2856214 | Black

\$49.99 us \$59.99 CAN | S - 2XL

**D. Polartec® Riding Shirt**

- » Polartec® fabric four-way Powerstretch®
- » Zip mock neck
- » Can be worn alone or as a layering piece

#2867050 | Gray/Black

\$89.99 us \$104.99 CAN | S - 2XL

**F. Polartec® Riding Pant**

- » Polartec® fabric four-way Powerstretch®
- » Draw cord waist
- » Can be worn alone or as a layering piece

#2867051 | Black

\$89.99 us \$104.99 CAN | S - 2XL



A

MEN'S BARRIER FLEECE JACKET  
- BLACK



B

WOMEN'S BARRIER FLEECE JACKET  
- LIGHT PINK/BLACK



A

MEN'S BARRIER FLEECE JACKET  
- BLACK/RED



B

WOMEN'S BARRIER FLEECE JACKET  
- BLACK

### A. Men's Barrier Fleece Jacket

- » Anti-pill microfleece
- » Drop tail hem
- » Elasticcord hem that cinches jacket around hips to seal in warmth
- » Multiple storage pockets
- » For layering or streetwear

#2868038 | Black

#2868039 | Black / Red

\$69.99 us \$79.99 CAN | S - 2XL

### B. Women's Barrier Fleece Jacket

Perfect for your wardrobe because it's great for both layering and as casual wear.

- » Anti-pill microfleece
- » Drop-tail hem
- » Elasticcord hem that cinches jacket around hips to seal in warmth
- » Multiple storage pockets

#2868040 | Women's Light Pink / Black

#2868041 | Women's Black

\$59.99 us \$69.99 CAN | S - 2XL



MEN'S BASE LAYER  
TURTLE NECK TOP

C



MEN'S BASE LAYER CREW TOP

C



MEN'S BASE LAYER PANT

C



WOMEN'S BASE  
LAYER TOP

D



WOMEN'S BASE LAYER PANT

D

**C. Men's Base Layers**

- » Microfiber moisture wicking fabric, 100% Polyester
- » Provides thermal insulation
- » Pill-proof durability

#2868046 | Turtle Neck Top - Black

#2868045 | Crew Top - Black

#2868047 | Pant - Black

\$24.99 us \$29.99 CAN | S - 2XL

**D. Women's Base Layers**

- » Microfiber moisture wicking fabric, 100% Polyester
- » Provides thermal insulation
- » Pill-proof durability

#2868043 | Top - Light Blue

#2868044 | Pant - Light Blue

\$24.99 us \$29.99 CAN | S - 2XL



A

YOUTH MX HELMET - BLACK

YOUTH MX HELMET - SILVER



B

YOUTH POLARIS PERFORMANCE RIDING JERSEY



C

YOUTH TECH ARMOR



D

DUSTMITE YOUTH TEE



E

FLOWER YOUTH TEE

**A. Youth MX Helmet**

Our best open-faced youth helmet yet, now with nose guard and goggle grippers.

**Shell:** Injection-molded thermoplastic ABS shell.

**Vents:** Chin, forehead and rear vents.

**Interior:** Removable, washable liner. Integrated nose guard.

**Additional Features:** Goggle strap gripper.

**Safety:** DOT approved.

#2868090 | Silver

\$89.99 us \$104.99 CAN | Youth S - L

#2868091 | Black

\$84.99 us \$99.99 CAN | Youth S - L

**B. Youth Polaris Performance Riding Jersey**

- » 100% Polyester
- » Padded cuffs, moisture managing detail

#2846444 | Black/Red

\$49.99 us \$59.99 CAN | Youth S - 2XL

**D. Dustmite Youth Tee**

- » 100% Cotton

#2868404 | Brown

\$19.99 us \$24.99 CAN | Youth S - XL

**C. Youth Tech Armor**

Extremely high-tech, durable ABS plastic body armor is essential for a safe ride. Ergonomically designed to keep you tough on the outside and comfortable on the inside. Adjustable shoulder pads. Removable arm shields.

#2854186 | Tech Armor

\$99.99 us \$114.99 CAN | One Size Fits Most

**E. Flower Youth Tee**

- » 100% Cotton

#2868405 | Pink

\$19.99 us \$24.99 CAN | Youth S - XL



F

FLOWER YOUTH JERSEY



G YOUTH PINK ATV HELMET

H YOUTH MOTO GLOVE



- BLACK

- RED

- BLUE

- YELLOW



I YOUTH DUAL LENS GOGGLE

**F. Flower Youth Jersey**

» 100% Cotton

#2868405 | Pink

\$19.99 us \$24.99 CAN | Youth S - L

**G. Youth Pink ATV Helmet**

This year-round helmet gives younger riders the protection they need while riding ATVs as well as snowmobiles in milder temperatures.

#2868068 | Pink with Flower Graphics

\$69.99 us \$79.99 CAN | One Size Fits Most

**H. Youth Moto Glove**

Shell: Spandex.

**Waterproof Breathable:** Outer membrane protects against wind

**Additional Features:** Polaris rubber logos on back of hand and wrist, reinforced palm gel padding and stitching, synthetic leather palm silicone thumb and two fingertips for better grip.

#2856546 | Black

#2856547 | Red

#2856548 | Blue

\$24.99 us \$29.99 CAN | Youth S - L

**I. Youth Dual Lens Goggle**

» Dual fog-free lens.

#2853432 | Black

\$19.99 us \$24.99 CAN | One Size Fits Most



**A. Dragon Shop Jacket**

» 65% Polyester, 35% Cotton

#2868208 | Black/Red

\$99.99 us \$114.99 CAN | M - 3XL

**B. Solid Dragon Mechanics Shirt**

» 65% Polyester, 35% Cotton

#2868162 | Black - Dragon

\$59.99 us \$69.99 CAN | S - 3XL

**C. Polaris Performance Pit Shirt**

» 65% Cotton, 35% Polyester

#2846448 | Black/Red

\$49.99 us \$59.99 CAN | S - 2XL

**D. Striped Dragon Mechanics Shirt**

» 65% Polyester, 35% Cotton

#2868155 | White with Stripe - Dragon

\$59.99 us \$69.99 CAN | S - 3XL





**E. Polaris Performance Hoodie**

» 80% Cotton, 20% Polyester

#2868409 | Black

\$59.99 US \$69.99 CAN | S - 3XL

**F. Polaris Zip Hoodie**

» 80% Cotton, 20% Polyester

#2868106 | Black

\$49.99 US \$59.99 CAN | S - 2XL

**G. Camo Zip Hoodie**

» 80% Cotton, 20% Polyester

#2868410 | Black/Camo

\$59.99 US \$69.99 CAN | M - 3XL

**H. 54 Race Team Sweatshirt**

» 80% Cotton, 20% Polyester

#2868108 | Gray

\$29.99 US \$34.99 CAN | S - 2XL

**I. Polaris 54 Track Jacket**

» 100% Polyester

#2868109 | Black/Red

\$54.99 US \$64.99 CAN | S - 2XL



A



B



C



D



E



F

**A. Outlaw Long Sleeve Tee**

» 100% Cotton

#2867137 | Charcoal

#2867138 | Black

\$29.99 US \$34.99 CAN | S - 2XL

**B. Chrome Flame Long Sleeve Tee**

» 100% Cotton

#2868101 | Navy Blue

\$29.99 US \$34.99 CAN | S - 2XL

**C. Repeat Long Sleeve Tee**

» 100% Cotton

#2868100 | Black

\$29.99 US \$34.99 CAN | S - 2XL

**D. Skull Long Sleeve Tee**

» 100% Cotton

#2868102 | Black

\$29.99 US \$34.99 CAN | S - 2XL

**E. Riding Scene Long Sleeve Tee**

» 100% Cotton

#2868408 | Gray

\$29.99 US \$39.99 CAN | S - 2XL

**F. Thermo Long Sleeve Tee**

» 100% Cotton

#2868207 | White

\$29.99 US \$34.99 CAN | S - 3XL





**G. Outlaw Tee**

» 100% Cotton

#2868350 | Charcoal

\$19.99 us \$24.99 CAN | S - 2XL

**H. Performance Spine Tee**

» 100% Cotton

#2868401 | Black

\$19.99 us \$24.99 CAN | S - 3XL

**I. Performance Skull Tee**

» 100% Cotton

#2868349 | Black

\$19.99 us \$24.99 CAN | S - 3XL

**J. Polaris ATV -Tee**

» 100% Cotton

#2868398 | Hunter Orange

\$19.99 us \$24.99 CAN | S - 3XL

**K. Polaris Camo Tee**

» 100% Cotton

#2868397 | Black

\$19.99 us \$24.99 CAN | S - 2XL

**L. Polaris Camo Tee**

» 100% Cotton

#2868104 | Charcoal

\$11.99 us \$19.99 CAN | S - 3XL

**M. Polaris Sonic Blue Tee**

» 100% Cotton

#2868399 | Sonic Blue

\$19.99 us \$24.99 CAN | S - 2XL

**N. Polaris ATV Tee**

» 100% Cotton

#2868400 | Sand

\$14.99 us \$19.99 CAN | S - 3XL

**O. Stripe Polo Shirt**

» 100% Cotton

#2868092 | Blue

#2868093 | Khaki

#2868094 | Gray

\$24.99 us \$29.99 CAN | S - 2XL

**P. Twill Long Sleeve Shirt**

» 100% Cotton

#2868097 | Blue

#2868098 | Khaki

#2868099 | Red

\$29.99 us \$34.99 CAN | S - 2XL

**Q. Ellipse Turtle Neck**

» 100% Cotton

#2842410 | Black

#2842411 | Red

#2842412 | White

\$29.99 us \$34.99 CAN | S - 2XL



**A. Velour Zip Hoodie**

» Cotton, Velour, Lycra®

#2868116 | Black/Blue

\$39.99 US \$49.99 CAN | Women's S - 2XL

**B. Blue Star Tee**

» 100% Cotton

#2868117 | Blue

\$19.99 US \$24.99 CAN | Women's S - 2XL

**C. Velour Pants**

» Cotton, Velour, Lycra®

#2868118 | Black/Blue

\$39.99 US \$49.99 CAN | Women's S - 2XL

**D. Race Hoodie**

» 80% Cotton, 20% Polyester

#2867296 | Black/Pink

#2868171 | Red/Black

\$54.99 US \$64.99 CAN | Women's S - 2XL

**E. Zip-up Polaris Sweatshirt**

» 80% Cotton, 20% Polyester

#2868113 | Yellow

#2868114 | Sage Green

\$49.99 US \$59.99 CAN | Women's S - 2XL

**F. Fleece Shirt**

» 100% Polyester

#2868128 | Light Blue

#2868107 | Red

\$49.99 US \$59.99 CAN | Women's S - 2XL





**G. 3/4 College Stripe Tee**

» 100% Cotton

- #2868125 | Pink
- #2868126 | Blue
- #2868127 | Chocolate

\$39.99 US \$49.99 CAN | Women's S - 2XL

**H. History Tee**

» 100% Cotton

- #2868115 | Black

\$19.99 US \$24.99 CAN | Women's S - 2XL

**J. 2-In-1 Swirl Shirt**

» 100% Cotton

- #2868119 | Pink/White
- #2868120 | Blue/White

\$29.99 US \$34.99 CAN | Women's S - 2XL

**I. Dragon Mechanics Shirt**

» 65% Cotton, 35% Polyester

- #2868122 | Black

\$54.99 US \$64.99 CAN | Women's S - XL

**K. Polaris Performance Pit Shirt**

» 65% Cotton, 35% Polyester

- #2846461 | Black

\$49.99 US \$59.99 CAN | Women's S - XL



**A. Predator Red Cap**

#2868364 | Red  
\$19.99 us \$24.99 CAN | Fitted

**B. Outlaw Flame Cap**

#2868361 | Black  
\$14.99 us \$17.99 CAN | Velcro® Closure

**C. Performance Cap**

#2868363 | Red  
\$14.99 us \$17.99 CAN | Velcro® Closure

**D. Outlaw Panel Cap**

#2867154 | Black/White  
\$19.99 us \$24.99 CAN | Velcro® Closure

**E. Polaris Side Flame Red Cap**

#2868145 | Red  
\$14.99 us \$17.99 CAN | Velcro® Closure

**F. Polaris Side Flame Black Cap**

#2868146 | Black  
\$14.99 us \$17.99 CAN | Velcro® Closure



**G. Sportsman Camo Cap**

#2868367 | Camo  
\$19.99 us \$24.99 CAN | One Size Fits Most

**J. Sportsman Camo Flame Cap**

#2867160 | Black with Camo Flame  
\$19.99 us \$24.99 CAN | Velcro® Closure

**M. Polaris Camo Mesh Cap**

#2868369 | Camo  
\$14.99 us \$17.99 CAN | One Size Fits Most

**H. Polaris Mossy Oak Cap**

#2842943 | Camo  
\$19.99 us \$24.99 CAN | Velcro® Closure

**K. Polaris Camo Flame Black Cap**

#2867166 | Black with Orange Flame  
\$19.99 us \$24.99 CAN | Velcro® Closure

**N. Polaris Flame Cap**

#2868359 | Black  
\$19.99 us \$24.99 CAN | Velcro® Closure

**I. Sportsman Cap**

#2868360 | Gray  
\$14.99 us \$17.99 CAN | Velcro® Closure

**L. Polaris Camo Flame Orange Cap**

#2867167 | Orange with Black Flame  
\$19.99 us \$24.99 CAN | Velcro® Closure

**O. Polaris Vertical Flame Orange Cap**

#2868148 | Black  
\$14.99 us \$17.99 CAN | Velcro® Closure



A



B



C



D



E



F



G



H



I

**A Flying Skull**

#2868147 | Black  
\$14.99 us \$17.99 CAN | Velcro® Closure

**B. Race Cap**

#2867277 | Black  
\$14.99 us \$17.99 CAN | Fitted

**C.Polaris Industrial Cap**

#2868149 | Gray/Black  
\$14.99 us \$17.99 CAN | One Size Fits Most

**D.Side Camo Cap**

#2868138 | Brown/Camo S - M  
#2868139 | Brown/Camo L - XL  
\$14.99 us \$17.99 CAN | Fitted

**E. Ellipse Splatter Cap**

#2868134 | Gray S - M  
#2868135 | Gray L - XL  
\$14.99 us \$17.99 CAN | Fitted

**F. Polaris Riding Co. Cap**

#2868144 | Brown S - M  
#2868141 | Brown L - XL  
\$14.99 us \$17.99 CAN | Fitted

**G. Tonal Ellipse Cap**

#2868142 | Black  
\$14.99 us \$17.99 CAN | Velcro® Closure

**H.Ladies Rhine Star Cap**

#2868152 | Black  
\$14.99 us \$17.99 CAN | Velcro® Closure

**I. Pink Flame Cap**

#2847906 | Pink  
\$14.99 us \$17.99 CAN | Velcro® Closure





**J. Outlaw Beanie**

» 100% Cotton

#2868292 | Gray

\$12.99 us \$14.99 CAN | One Size Fits Most

**M. Military Cap**

» 100% Acrylic

#2868153 | Black

\$14.99 us \$17.99 CAN | One Size Fits Most

**K. Outlaw Beanie**

» 100% Cotton

#2867171 | Black

\$14.99 us \$17.99 CAN | One Size Fits Most

**N. Ladies Stripe Beanies**

» 100% Cotton

#2868160 | Pink

#2868161 | Blue

\$14.99 us \$17.99 CAN | S - 2XL

**L. Polaris Reversible Beanies**

» 100% Cotton

#2868158 | Blue/Black

#2868159 | Red/Gray

\$14.99 us \$17.99 CAN | One Size Fits Most



A



B



C



D



E



F

**A. Polaris OGIO Big Wheel Duffel Bag**

#2868459 | Red | \$79.99 us \$99.99 CAN

**B. Polaris OGIO All-Terrain Carry-on Bag**

#2868461 | Red | \$59.99 us \$74.99 CAN

**C. Polaris Carry-on**

#2835910 | Black | \$89.99 us \$104.99 CAN

**D. Polaris Duffel Bags**

#2835907 | Large | \$129.99 us \$149.99 CAN  
 #2835908 | Small | \$99.99 us \$114.99 CAN

**E. Polaris OGIO Mastermind Backpack**

#2868460 | Red | \$39.99 us \$49.99 CAN

**F. Youth Backpack**

#2835911 | Black | \$49.99 us \$59.99 CAN



G



H



I



J



K



L



P



M



N



O



Q



R



S



T

**G. Portfolio** *Embossed logo on front*  
#2836900 | \$29.99 US \$34.99 CAN

**K. Bottle Opener Keychain**  
#2835922 | \$3.99 US \$4.99 CAN

**H. Polaris 12" Wall Clock**  
#2835901 | \$24.99 US \$29.99 CAN

**I. Outdoor Thermometer**  
#2836903 | \$19.99 US \$24.99 CAN

**J. Polaris Playing Cards**  
#2836906 | 9.99 US \$12.99 CAN

**N. Carabiner, Watch, Compass**  
#2835918 | \$6.99 US \$8.99 CAN

**L. Polaris Pewter ATV Keychain**  
#2833292 | \$9.99 US \$12.99 CAN

**P. Carabiner, Flashlight, Compass**  
#2868164 | \$7.99 US \$9.99 CAN

**M. 3-in-1 Zipper Pull**  
#2831906 | \$6.99 US \$8.99 CAN

**R. Polaris Travel Mug**  
#2835900 | \$12.99 US \$14.99 CAN

**O. Polaris Oval Key Ring**  
#2835903 | \$1.99 US \$2.99 CAN

**T. Polaris Water Bottle**  
#2836904 | \$12.99 US \$14.99 CAN

**W Carabiner, Watch, Compass**  
#2835918 | \$6.99 US \$8.99 CAN

**S. Polaris Travel Mug**  
#2834923 | \$14.99 US \$17.99 CAN

**SIZING CODES FOR ORDERING**

XS = 01	M = 03	M - Tall = 05	L - Short = 07	XL = 09	XL Tall = 11	XXL Tall = 13
S = 02	M - Short = 04	L = 06	L - Tall = 08	XL Short = 10	XXL = 12	XXXL = 14

**HELMET SIZE CONVERSION TABLE - ADULT**

Size	Hat Size	Inches	Metric	Size Code
XS	6 <sup>3</sup> / <sub>4</sub>	21 <sup>1</sup> / <sub>4</sub>	54	01
S	6 <sup>7</sup> / <sub>8</sub> - 7	21 <sup>5</sup> / <sub>8</sub> - 22	55 - 56	02
M	7 <sup>1</sup> / <sub>8</sub> - 7 <sup>1</sup> / <sub>4</sub>	22 <sup>3</sup> / <sub>8</sub> - 22 <sup>3</sup> / <sub>4</sub>	57 - 58	03
L	7 <sup>3</sup> / <sub>8</sub> - 7 <sup>1</sup> / <sub>2</sub>	23 <sup>1</sup> / <sub>8</sub> - 23 <sup>5</sup> / <sub>8</sub>	59-60	06
XL	7 <sup>5</sup> / <sub>8</sub> - 7 <sup>3</sup> / <sub>4</sub>	24 - 24 <sup>3</sup> / <sub>8</sub>	61-62	09
XXL	7 <sup>7</sup> / <sub>8</sub> - 8	24 <sup>3</sup> / <sub>4</sub> - 25 <sup>1</sup> / <sub>8</sub>	63-64	12
XXXL	8	25 - 26	65	14

**HELMET SIZE CONVERSION TABLE - YOUTH**

Size	Circumference	Metric	Size Code
Adj.	Fits S-L	51 - 54	00
S	20 <sup>3</sup> / <sub>8</sub>	51	01
M	20 <sup>7</sup> / <sub>8</sub>	53	02
L	21 <sup>3</sup> / <sub>8</sub>	55	06

**MEN'S JACKET & BIB SIZING**

Size	Chest	Sleeve	Waist	Inseam
S	34 - 36	33	28 - 30	33
M	38 - 40	34	32 - 34	33 <sup>1</sup> / <sub>2</sub>
M Tall	42 - 44	35 <sup>1</sup> / <sub>2</sub>	32 - 34	35 <sup>1</sup> / <sub>2</sub>
L	42 - 44	35	36 - 38	34
L Tall	46 - 48	36 <sup>1</sup> / <sub>2</sub>	36 - 38	36
XL	46 - 48	36	40 - 42	34 <sup>1</sup> / <sub>2</sub>
XL Tall	46 - 48	37 <sup>1</sup> / <sub>2</sub>	40 - 42	36 <sup>1</sup> / <sub>2</sub>
XXL	50 - 52	37	44 - 46	35
XX-L Tall	50 - 52	38 <sup>1</sup> / <sub>2</sub>	44 - 46	37
XXX-L	50 - 52	37 <sup>1</sup> / <sub>2</sub>	48 - 50	35 <sup>1</sup> / <sub>2</sub>

Men's regular 5'8" to 6'0", tall 6'0" to 6'4"

Tall is 2" longer and shorts are 2" shorter than standard size.

**BOOT SIZING CHART**

	Child	Youth
CODE	11 12 13	0102 03 04 05 06
SIZE	11 12 13	1 2 3 4 5 6

	Women's	Men's
CODE	05 06 07 08 09 10 11	07 08 09 10 11 12 13 14
SIZE	5 6 7 8 9 10 11	7 8 9 10 11 12 13 14

**WOMEN'S JACKET & BIB SIZING**

Size	Chest	Sleeve	Waist	Inseam
S	32 - 34	34 <sup>1</sup> / <sub>2</sub> - 36 <sup>1</sup> / <sub>2</sub>	24 - 26	30
M	34 - 36 <sup>1</sup> / <sub>2</sub>	36 <sup>1</sup> / <sub>2</sub> - 39	26 - 28 <sup>1</sup> / <sub>2</sub>	31
L	37 - 39 <sup>1</sup> / <sub>2</sub>	39 <sup>1</sup> / <sub>2</sub> - 42	29 - 31 <sup>1</sup> / <sub>2</sub>	31 <sup>1</sup> / <sub>2</sub>
XL	40 <sup>1</sup> / <sub>2</sub> - 43 <sup>1</sup> / <sub>2</sub>	43 - 46	32 <sup>1</sup> / <sub>2</sub> - 35 <sup>1</sup> / <sub>2</sub>	32
XXL	44 - 47 <sup>1</sup> / <sub>2</sub>	47 <sup>1</sup> / <sub>2</sub> - 50	36 - 39 <sup>1</sup> / <sub>2</sub>	32

Women's regular 5'4" to 5'7", tall 5'8" to 5'11", petite 5'2" to 5'5"

Tall is 2" longer and shorts are 2" shorter than standard size.

**YOUTH JACKET & PANT SIZING**

Size	Chest	Waist	Height	Hip
S - 6/8	23 - 26	23 - 25	45 - 52	22 - 25
M - 10/12	27 - 29	26 - 27	55 - 59	26 - 28
L - 14/16	31 - 33	28 - 29	62 - 64	30 - 31 <sup>1</sup> / <sub>2</sub>
XL - 18	34	30	66	33

## WATERPROOF/BREATHABLE SHELL MATERIAL

### Membrane & Coating Shell Materials:

The outerwear shell materials we use come in varying degrees of waterproofing and breathability (WP/B) to match your particular riding style and climate. Often, a protective film or lamination is applied to a fabric to give it WP/B. Levels range from a PU coating which offers basic water resistance, to extremely high levels of breathability and waterproofing that keep users cool and dry in extreme wet or snowy conditions. The shell materials we use are listed here and are arranged in order from premium to basic WP/B.

Fabrics that are labeled as breathable allow perspiration vapor to escape through the fabric (almost as if the garment were exhaling) to minimize the amount of moist air trapped inside a garment. This helps keep the wearer drier—and thus warmer and more comfortable—than do traditional fabrics that do not “breathe.”

Fabrics that are noted as waterproof prevent water from seeping through and soaking the fabric. This is a great benefit to a snowmobiler, who is outside in moist air and wet snow all day. The seams of garments marked with better or best waterproof/breathable technology are fully taped so moisture cannot sneak through where panels of fabric are stitched together.

### eVent®:

eVent Fabric is a Direct Venting™ waterproof barrier that marks a significant advancement in ePTFE laminate technology. Using proprietary and patented Drysystem™ technology, eVent Fabric sets a new standard for comfort by allowing perspiration to dissipate and vent without saturating the inside of the fabric.

### Reissa®, MVT® & Hipora®:

These coatings have a breathable polyurethane coating that is highly reactive to weather conditions. MVT, Reissa® and Hipora® are extremely thin, lightweight, waterproof coatings which allow for bulk free wearing comfort but are also highly durable to survive extreme outdoor sports and weather conditions. Levels can vary from 2000mm/2000g to 20,000mm/20,000g.

### Polyurethane:

Polyurethane coated shell fabrics are water resistant, blocking wind and water. Entry levels can range from 600mm to 1000mm. Provides water resistance without breathability.

## FABRICS

### Denier levels (420 vs. 660):

Denier levels refer to the thickness/weight of a fiber. It indicates the material's durability. The higher the denier, the thicker the fiber; the lower the denier, the finer the fiber. Polaris uses fabrics with both 420 deniers and 660 deniers to optimize both riding comfort and protection.

### Cordura®:

Maximum durability is what this fabric is known for and is used in products that take a beating – luggage, backpacks, boots and performance apparel. Cordura® resists tears, abrasions and scuffs like no other fabric of its kind or weight. This fabric is ten times more durable than cotton duck, three times more durable than standard polyester and twice as durable as standard nylon.

### Oxford Nylon:

Oxford is a soft, basket weave fabric made from man-made materials. It is somewhat porous, giving its face (surface) a coarse “pin head” appearance.

### Taslan®:

This fabric is constructed of a number of materials including a trademarked textured yarn and polyamide fibers. These fibers are steamed so that they swell and become softer, but retain their durability and resistance to wind and water. Taslan appears as if it has “lines” on its face (surface).

## INSULATION

### Insulation:

The insulation layer in a garment often determines how it will be used. Preference, body type and climate play a role, but the most important factor may have to do with the type of rider you are. If you ride often and are a technical, aggressive rider, our premium insulators may be exactly what you want. If you are an occasional, touring or trail rider our more affordable lines may be for you. The types of insulations we use in our garments are listed here in order of premium to basic.

### Thermolite® Plus:

Thermolite® Plus is even less bulky and thinner than Thermolite®. Made from non-allergenic recycled polyester fibers. It has exceptional durability after repeated washings and has more warmth than down when wet.

### Hollofil® II:

A premium, high loft insulation that provides dependable warmth and durability. Hollofil II offers consistency in loft, fiber content and insulating capabilities. Special four-hole fibers trap more air for greater warmth. It is engineered for cold weather apparel and sleeping bags to provide enhanced thermal performance along with freedom of movement. It limits radiant heat loss and greatly reduces convective heat loss.

### Polyfil®:

Polyfil is 100% polyester insulation that is machine washable and provides soft, affordable comfort. Polyfil is used for general outerwear, sportswear and accessories to provide warmth and comfort and retains its insulating ability even under damp conditions.

### Outlast®:

Used in our socks, Smart Fabric Technology™ by Outlast balances temperature so that your feet can stay cool, dry and comfortable throughout the entire day regardless of your body temperature or how hard you are riding.

### Coolmax®:

Coolmax fabrics are made of specially engineered fibers that transport perspiration away from the body to the surface of the garment, where it evaporates quickly. The uniquely shaped four-channel fibers provide excellent breathability even when wet, so your body is kept cool and dry during strenuous activity. Coolmax is used in our socks to keep you warm and dry. Garments manufactured with Coolmax fabrics must pass stringent certification tests.

## BASE & MID LAYERS

### Base Layer:

These microfiber, moisture-wicking fleece fabrics are used in first layer apparel and layering systems for maintaining a perfect “next-to-skin environment”. This means that because it is on your skin, it will keep you ultra-warm on a day of cold, wet riding, and keep sweat away — evading that cold, clammy feeling. They have anti-microbial technology and anti-pill durability for long lasting warmth and comfort.

### Mid Layer:

Traps air and creates a holding pocket of body heat. Synthetic fibers work even when wet. Low profile moisture wicking performance with incredible warmth and softness.

### Polartec® Power Stretch®:

Polartec Power Stretch features body-hugging four-way stretch and is very breathable. The durable nylon outer layer is wind- and abrasion-resistant; the soft inner layer pulls moisture away from your skin keeping you dry, warm and comfortable — without weight. Features compression stretch which can improve performance and reduce the chance of certain types of stop-go injuries. This fabric excels at handling the demands of the next-to-skin environment.

### Polaris® Barrier Fleece:

Polaris® Barrier Fleece is a 100% polyester microfleece. Polyester microfleece is similar to traditional polar fleece, yet is comprised of exceptionally fine, micro-filament fibers making it a light and soft choice.

2008 ACCESSORIES FIT CHART

	Sportsman Single Cylinder	Sportsman Twin Cylinder	Sportsman 300/400 HO	Phoenix
Polaris Winch Kit, 1.5, 1500 lb Capacity	—	—	#2375880	—
Polaris Winch Kit, 2.5, 2500 lb Capacity	#2875879	#2875879	—	—
Polaris Winch Kit, 3.5, 3500 lb Capacity	#2876494	#2876494	—	—
Universal "Plus" Plow Frame & Mount	#2875656	#2875656	#2375656	—
Glacier II Plow Mount Plate	#2876151	#2876151	—	—
Glacier I Plow Mount Plate	#2874774	#2874773	—	—
Electric Plow Lift	#2874772	#2874772	#2374772	—
Electric Plow Lift Mount & Strap (Use with #2874772)	#2854644	2854644	2354619	—
48" Snow/Dirt Blade	#2874827	#2874827	#2374827	—
52" Plow Blade	#2875342	#2875342	—	—
60" Snow Blade (Recommended For Snow Only)	#2874929	#2874929	—	—
56" One-way Blade with Snow Deflector	#2872684	#2872684	—	—
60" Two-way Blade, Razor	#2875370	#2875370	—	—
Spring Pre-Load Adjusters	#2876463	#2876463	#2376463	—
Chains, Pair V-bar, size C (25" Tire/26" Tire)	#2870948	#2870948	—	—
Prospector Pro Track System	#2876664	#2876664	—	—
Bodyguard, Rear Brushguard	#2875600	#2875600	—	—
Bodyguard, Fender Protector Left	#2875601	#2875601	—	—
Bodyguard, Fender Protector Right	#2875602	#2875602	—	—
Bodyguard, Rack Extender, Front	#2875604	#2875604	—	—
Bodyguard, Rack Extender, Rear	#2875603	#2875603	—	—
Mount, Gun Scabbard, Lock & Ride, Right Side, Wrinkle Paint	#2876276	#2876276	#2375679	—
Mount, Gun Scabbard, Lock & Ride, Left Side, Wrinkle Paint	#2875703	#2875703	#2375704	—
Kolpin Gun Boot IV (Mount Not Included), Black	#2872677	#2872677	#2372677	—
Kolpin Gun Boot IV (Mount Not Included), New Mossy Oak	#2872677-419	#2872677-419	#2372677-419	—
Windshield, Lock & Ride, Tall	#2876017	#2876017	#2375682	#2875652
Windshield, Lock & Ride, Mid Height	#2876018	#2876018	—	—
Bumper, Front, Black Wrinkle	#2875175-418	#2875175-418	#2875587-418	—
Bumper, Front, Red	#2875175-288	#2875175-288	—	—
Bumper, Front, Blue	#2875175-341	#2875175-314	—	—
Brushguard, Front, Black Wrinkle	#2875173-418	#2875173-418	#2875586-418	—
Brushguard, Front, Red	#2875173-288	#2875173-288	—	—
Brushguard, Front, Blue	#2875173-341	#2875173-341	—	—
Bumper, Front, Red	#2875175-288	#2875175-288	—	—
Bumper, Front, Blue	#2875175-341	#2875175-314	—	—
Rear Grab Bar, Black Wrinkle	#2875550-418	#2875550-418	—	—
Rear Grab Bar, Red	#2875550-288	#2875550-288	—	—
Rear Grab Bar, Blue	#2875550-341	#2875550-341	—	—
Bumper, Rear, Black Wrinkle	#2875174-418	#2875174-418	#2875588-418	—
Bumper, Rear, Red	#2875174-288	#2875174-288	—	—
Bumper, Rear, Blue	#2875174-341	#2875174-341	—	—



2008 ACCESSORIES FIT CHART

	Sportsman Single Cylinder	Sportsman Twin Cylinder	Sportsman 300/400 HO	Phoenix
Rack Extender, Front, <b>Black Wrinkle</b>	#2875217-418	#2875217-418	#2875680-418	—
Rack Extender, Front, Red	#2875217-288	#2875217-288	—	—
Rack Extender, Front, <b>Blue</b>	#2875217-341	#2875217-341	—	—
Rack Extender, Rear, <b>Black Wrinkle</b>	#2875216-418	#2875216-418	#2875598-418	—
Rack Extender, Rear, Red	#2875216-288	#2875216-288	—	—
Rack Extender, Rear, <b>Blue</b>	#2875216-341	#2875216-341	—	—
Rack, Rear, Phoenix	—	—	—	—
Steel Compartment Rack, Lock & Ride, <b>Black Wrinkle</b>	#2875547-418	#2875547-418	—	—
Cargo Box, Lock & Ride	#2875176	#2875176	#2875678	—
Pocket Bag, <b>Black</b> - Fits Cargo Box & Soft Bag, Each, Cargo Box Requires Loop Kit (#2875339)	#2875372-070	#2875372-070	—	—
Pocket Bag, <b>Mossy Oak</b> - Fits Cargo Box & Soft Bag, Each, Cargo Box Requires Loop Kit (#2875339)	#2875372-419	#2875372-419	—	—
Loop, Cargo Box, Set Of 8	#2875339	#2875339	—	—
Cargo Box Backrest (Attaches to cargo Box #2875176)	#2875548	#2875548	—	—
Lock & Ride Backrest	#2875549	#2875549	#2875705	—
Mount, Basket, Steel, Lock & Ride, Enclosed Only	#2875371	#2875371	—	—
Bag, Rear Cargo, <b>Black</b>	#2875307-070	#2875307-070	#2875677-070	#2875651-070
Bag, Rear Cargo, <b>Mossy Oak</b>	#2875307-419	#2875307-419	—	—
Bag, Tank, Map, <b>Black</b>	#2875318-070	#2875318-070	#2875318-070	#2875650-070
Bag, Tank, Map, <b>Mossy Oak</b>	#2875318-419	#2875318-419	#2875318-419	—
Bag, Fender, <b>Black</b>	#2875306-070	#2875306-070	—	—
Bag, Fender, <b>Mossy Oak</b>	#2875306-419	#2875306-419	—	—
Hitch	—	—	—	#2875457
1.25" Receiver Hitch Draw Bar with 1 Inch Drop - Includes Pin & Cotter Key	#2873366	#2873366	#2873366	—
1.25" Receiver Hitch Draw Bar with 3 Inch Drop - Includes Pin & Cotter Key	#2873365	#2873365	—	—
Handwarmers	#2875344	#2875344	#2875344	—
Throttle Heater/Thumbwarmer For Composite Plastic Throttle	#2874576	#2874576	#2874576	—
Handguard, <b>Black Metallic</b>	#2874871-177	#2874871-177	#2875709-177	#2875655
Handguard, <b>Medium Yellow</b>	#2874871-053	#2874871-053	#2875709-053	—
Handguard, <b>Blazing Red</b>	#2874871-288	#2874871-288	#2875709-288	—
Handguard, <b>Sonic Blue</b>	#2874871-341	#2874871-341	#2875709-341	—
Handguard, <b>Camo Green Metallic</b>	#2874871-400	#2874871-400	#2875709-400	—
Cover, Trailerable, <b>Black</b>	#2875648-070	#2875648-070	#2875718	#2875717
Cover, Trailerable, Sportsman, <b>Mossy Oak Break-up</b>	#2875648-419	#2875648-419	—	—
Tire Kit, 14" Cast <b>Aluminum Rims with Goodyear MTR Radial Tires</b> (Set of 4 Mounted)	#2875908	#2875908	—	—
Tire Kit, 14" <b>Crusher Aluminum Rims with Goodyear MTR Radial Tires</b> (Set of 4 Mounted)	#2876620	#2876620	—	—
Tire Kit, <b>BeadLock Rims with Kenda Executioner Tires</b> (Set Of 4 Mounted)	#2875605	#2875605	—	—
Tire Kit, <b>BeadLock Rims with Kenda BearClaw Tires</b> (Set Of 4 Mounted)	#2875606	#2875606	—	—
Auxiliary Oil Cooler Kit	—	—	#2875770	—
Skid Plate ( <b>Black</b> )	—	—	—	#2875710

## ATV BODY STYLES

### 2008

MODEL	BODY STYLE
Outlaw 50	Youth
Outlaw 90	Youth
Sportsman 90	Youth
Phoenix 200	Phoenix
Trail Blazer 330	Gen III
Scrambler 500 4x4	Gen III
Outlaw 450 MXR	Sport
Outlaw 525 S	Sport
Outlaw 525 IRS	Sport
Sportsman 300	2008
Sportsman 400 HO	2008
Sportsman 6x6	Gen IV
Sportsman 500 HO	2008
Sportsman 500 EFI	2008
Sportsman 800 Twin EFI	2008
Sportsman 500 EFI X2	2008
Sportsman 700 EFI X2	2008
Sportsman Touring 500 EFI	2008
Sportsman Touring 800 EFI	2008
Trail Boss 330	Trail Boss

### 2004

MODEL	BODY STYLE
Predator 50	Youth
Predator 90	Youth
Sportsman 90	Youth
Predator 500	Sport
Trail Blazer 250	Gen III
Scrambler 500 4x4	Gen III
Xplorer 4x4	Gen II
Xplorer 400	Gen IV
Magnum 330	Gen IV
ATP 330 4x4	Gen IV
ATP 500 HO 4x4	Gen IV
Sportsman 6x6	Gen IV
Sportsman 400	Gen IV
Sportsman 500 HO	Gen IV
Sportsman 600 Twin	Gen IV
Sportsman 700 Twin	Gen IV
Sportsman 700 EFI	Gen IV
Trail Boss 330	Trail Boss

### 2000

MODEL	BODY STYLE
Scrambler 50	Youth
Scrambler 90	Youth
Sportsman 90	Youth
Trail Boss 325	Gen II
Trail Blazer 250	Gen III
Magnum 325 2x4	Gen IV
Magnum 325 4x4	Gen IV
Magnum 500	Gen IV
Sport 400L	Gen III
Scrambler 400	Gen III
Scrambler 500	Gen III
Sportsman 335	Gen IV
Sportsman 500	Gen IV
Sportsman 6x6	Gen IV
Xplorer 250 4x4	Gen II
Xplorer 400 4x4	Gen IV
Xpedition 325	Gen IV
Xpedition 425	Gen IV
Diesel	Gen IV

### 2007

MODEL	BODY STYLE
Predator 50	Youth
Outlaw 90	Youth
Sportsman 90	Youth
Phoenix 200	Phoenix
Sawtooth	Sawtooth
Predator 500	Sport
Outlaw 500	Sport
Outlaw 525	Sport
Hawkeye 2x4	Hawkeye
Hawkeye 4x4	Hawkeye
Scrambler 500 4x4	Gen III
Sportsman 6x6	Gen IV
Sportsman 450	2007
Sportsman 500 EFI (std/dlx)	2007
Sportsman 700 Twin EFI	2007
Sportsman 800 Twin EFI (std/dlx)	2007
Sportsman 500 EFI X2 (std/dlx)	2007
Sportsman 800 EFI X2 (std/dlx)	2007
Sportsman MV7	MV
Trail Boss 330	Trail Boss

### 2003

MODEL	BODY STYLE
Scrambler 50	Youth
Predator 90	Youth
Sportsman 90	Youth
Predator 500	Sport
Trail Blazer 250	Gen III
Trail Blazer 400	Gen III
Scrambler 500 4x4	Gen III
Trail Boss 330	Gen IV
Xplorer 4x4	Gen II
Xplorer 400	Gen IV
Magnum 330 2x4	Gen IV
Magnum 330 4x4	Gen IV
Sportsman 400	Gen IV
Sportsman 500 H.O.	Gen IV
Sportsman 600 Twin	Gen IV +
Sportsman 700 Twin	Gen IV +
Sportsman 6x6 - Camo Green	Gen IV

### 1999

MODEL	BODY STYLE
Trail Boss 250	Gen II
Trail Blazer	Gen III
Sport 400	Gen III
Magnum 500	Gen IV
Scrambler 400	Gen III
Scrambler 500	Gen III
Sportsman 335	Gen IV
Sportsman 500	Gen IV
Big Boss 500 6x6	Gen II
Xpress 300	Gen IV
Xplorer 300	Gen IV
Xplorer 400	Gen IV
Diesel	Gen IV

### 2006

MODEL	BODY STYLE
Predator 50	Youth
Predator 90	Youth
Sportsman 90	Youth
Phoenix	Phoenix
Sawtooth	Sawtooth
Predator 500	Sport
Outlaw 500	Sport
Hawkeye 2x4	Hawkeye
Hawkeye 4x4	Hawkeye
Trail Blazer 250	Gen III
Scrambler 500 4x4	Gen III
Magnum 330 4x4	Gen IV
Sportsman 6x6	Gen IV
Sportsman 450	2006
Sportsman 500 HO EFI	2006
Sportsman 500 HO	2006
Sportsman 700	2006
Sportsman 800 EFI	2006
Sportsman X2	2006
Sportsman MV7	MV
Trail Boss 330	Trail Boss

### 2002

MODEL	BODY STYLE
Scrambler 50	Youth
Scrambler 90	Youth
Sportsman 90	Youth
Trail Blazer	Gen III
Scrambler (all)	Gen III
Trail Boss 325	TrailBoss
Magnum 325 2x4	Gen IV
Xplorer 4x4	Gen II
Magnum 325 4x4	Gen IV
Xpedition 325	Gen IV
Xplorer 400	Gen IV
Xpedition 425	Gen IV
Magnum 500	Gen IV
Sportsman 6x6	Gen IV
Sportsman 400	Gen IV
Sportsman 500 H.O.	Gen IV
Sportsman 700 Twin	Gen IV +

### 1998

MODEL	BODY STYLE
Trail Boss	Gen II
Trail Blazer 250	Gen III
Sport 400L	Gen III
Magnum 425	Gen II
Scrambler 400	Gen III
Scrambler 500	Gen III
Sportsman 400L	Gen II
Sportsman 500	Gen IV
Big Boss 6x6	Gen II
Xpress 300	Gen IV
Xplorer 300	Gen IV
Xplorer 400 4x4	Gen IV
Xplorer 500	Gen IV

### 2005

MODEL	BODY STYLE
Predator 50	Youth
Predator 90	Youth
Sportsman 90	Youth
Phoenix 200	Phoenix
Predator 500	Sport
Trail Blazer 250	Gen III
Scrambler 500 4x4	Gen III
Magnum 330 2x4	Gen IV
Magnum 330 4x4	Gen IV
ATP 330 2x4	Gen IV
ATP 330 4x4	Gen IV
Sportsman 6x6	Gen IV
Sportsman 400	2005
Sportsman 500 HO	2005
Sportsman 700	2005
Sportsman 800 EFI	2006
Sportsman MV7	MV
Trail Boss 330	Trail Boss

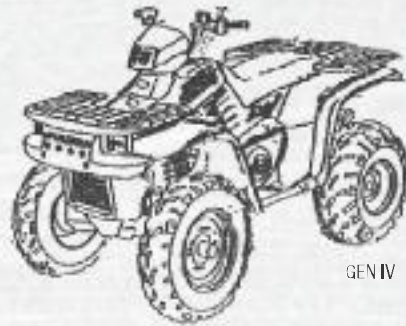
### 2001

MODEL	BODY STYLE
Scrambler 50	Youth
Scrambler 90	Youth
Sportsman 90	Youth
Predator 90	Youth
Trail Boss 325	Gen II
Trail Blazer 250	Gen III
Magnum 325 2x4	Gen IV
Magnum 325 4x4	Gen IV
Magnum 500	Gen IV
Scrambler (all)	Gen III
Sportsman 400	Gen IV
Sportsman 500	Gen IV
Sportsman 6x6	Gen IV
Diesel	Gen IV
Sportsman 6x6	Gen IV
Xpedition 325	Gen IV
Xpedition 425	Gen IV
Xplorer 250 4x4	Gen III
Xplorer 400 4x4	Gen IV
Sportsman 700 Twin	Gen IV +





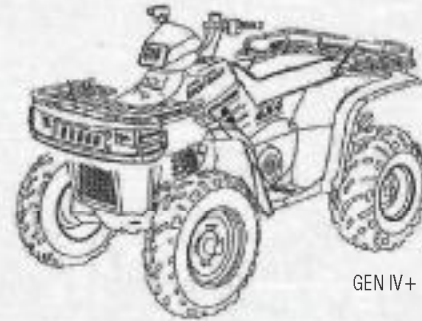
2005-2008 SPORTSMAN



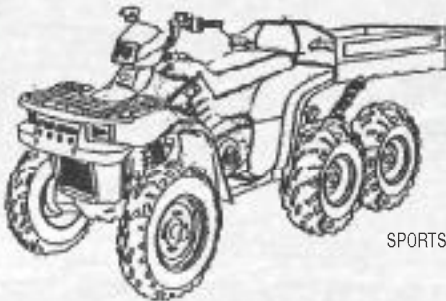
GEN IV



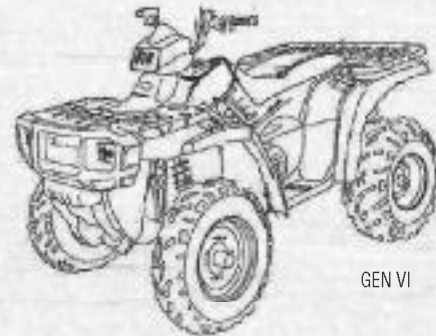
PREDATOR



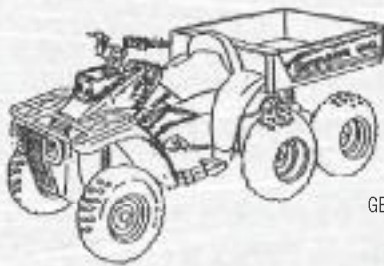
GEN IV+



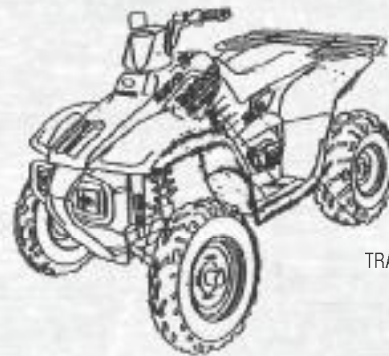
SPORTSMAN 6X6



GEN VI



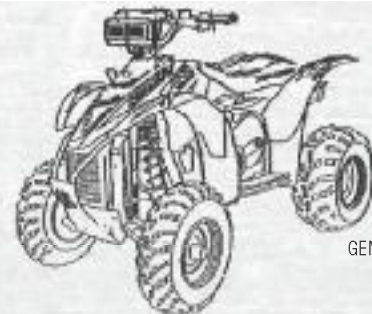
GEN II 6X6



TRAIL BOSS/ EXPLORER



GEN II



GEN III

# INDEX

6 x 6 Tracks	Sportsman	29
A-Arm Guard	High Performance	55
ADC Fluid	Maintenance and Garage	65
Air Filters	Sportsman	47
Air Filters	High Performance	53, 56
Air Filters	Maintenance and Garage	68, 69
Anti Freeze	Maintenance and Garage	66
Back Rest, Lock & Ride	Sportsman	34
Backpacks	Apparel	98
Bags	Apparel	98
Base Layers	Apparel	85
Baseball Hats	Apparel	94-96
Baseball Hats, Women	Apparel	96
Batteries	Maintenance and Garage	69
Battery Chargers	Maintenance and Garage	70
Beanies	Apparel	97
Bed Mat, Cargo Box	Sportsman	36
Body Guard	Sportsman	38-39
Boots	Apparel	81
Brake Fluid	Maintenance and Garage	67
Brush Guards	Sportsman	40-41
Bucket Holder, Lock & Ride	Sportsman	35
Bumper, Front	High Performance	54
Cargo Bags	Sportsman	34, 36, 37
Cargo Bags	Phoenix and Sawtooth	59
Cargo Box, Lock & Ride	Sportsman	33, 34
Carts	Sportsman	44
Chain Lube	Maintenance and Garage	67
Chains	Maintenance and Garage	69
Chest Protectors	Apparel	78
Chest Protectors, Youth	Apparel	86
Cleaner	Maintenance and Garage	68
Clutch Basket	High Performance	57
Clutch Fluid	Maintenance and Garage	65
Collectables	Apparel	99
Covers	Sportsman	46
Covers	High Performance	57
Covers	Phoenix and Sawtooth	60
Drive Belts	Maintenance and Garage	69
Drive Fluid	Maintenance and Garage	65
Engine Heater	Sportsman	24
Expanding Anchor, Lock & Ride	Sportsman	33
Fender Bag	Sportsman	37
Fleece Jackets	Apparel	84
Fogging Oil	Maintenance and Garage	67
Foot Peg Extensions	High Performance	54
Footrest Risers, Passenger	Sportsman	36
Fuel De-Icer	Maintenance and Garage	66
Fuel Stabilizer	Maintenance and Garage	66
Fuel Treatment	Maintenance and Garage	67
Gear Lube	Maintenance and Garage	67
Generators	Maintenance and Garage	71
Glacier I Plow	Sportsman	22
Glacier II Plow	Sportsman	20-21
Gloves	Apparel	79
Gloves, Youth	Apparel	87
Goggles	Apparel	78
Goggles, Youth	Apparel	87
Grab Bar, Rear	Sportsman	40, 41
Grab Bars, Front	High Performance	52, 54
Grab Bars, Rear	High Performance	53, 55
Grease	Maintenance and Garage	67
Grease Gun	Maintenance and Garage	66
Grille Screen	Sportsman	41
Gun Scabbards, Lock & Ride	Sportsman	32
Hand Gauntlets, Passenger	Sportsman	36
Hand Guards	Sportsman	37
Hand Guards	High Performance	53
Hand Guards	Phoenix and Sawtooth	59
Hand Warmers	Sportsman	24
Handle Bars	High Performance	56
Headlight Bulbs	Sportsman	47
Headlight Bulbs	Maintenance and Garage	70
Headlight Insert	High Performance	57
Heel Pockets	High Performance	52

Helmet Cam	Apparel	78
Helmet, Youth	Apparel	86, 87
Helmets	Apparel	74-77
Hitch's	Sportsman	46
Hitch's	Phoenix and Sawtooth	60
Hoodies	Apparel	89
Hoodies, Women	Apparel	92
Jackets	Apparel	80, 82
Jerseys	Apparel	79
Jerseys, Youth	Apparel	86, 87
License Plate Kit	Sportsman	47
Loading Ramps	Sportsman	46
Mowers	Sportsman	43
Nerf Bars	High Performance	52, 55
Oil Change Kits	Maintenance and Garage	64
Oil Cooling Kit, Auxiliary	Sportsman	47
Oil Filters	Sportsman	47
Oil Filters	Maintenance and Garage	68
Oil Tank Heater	Sportsman	24
Oils	Maintenance and Garage	64
Pants	Apparel	81, 82, 83
Pit Shirts	Apparel	88
Pit Shirts, Women	Apparel	93
Plow Accessories	Sportsman	24-25
Plows	Sportsman	20-23
Polo's	Apparel	91
Prospector Tracks	Sportsman	18-19
Rack Basket, Lock & Ride	Sportsman	35
Rack Extenders	Sportsman	40, 41
Rack Extenders	Phoenix and Sawtooth	60
Rear Rack	High Performance	55
Rear Rack	Phoenix and Sawtooth	60
Rear Wheel Kit	High Performance	54
Rims	Sportsman	26, 29
Roll Seat, Mechanics	Maintenance and Garage	70
Seat Heater	Sportsman	36
Seat, Gripper	High Performance	53
Shock Covers	High Performance	54
Shocks	High Performance	56
Shop Jackets	Apparel	88
Silencer, FMF	High Performance	52, 56
Skid Plate	Sportsman	41
Skid Plate	High Performance	55
Snow Deflectors	Sportsman	25
Socks	Apparel	81
Speedometers	Maintenance and Garage	70
Sprayer, Lock & Ride	Sportsman	35, 45
Sprayers, Tow	Sportsman	45
Spreader, Tow	Sportsman	44
Spring Adjusters	Sportsman	24
Sprockets	High Performance	54, 57
Sprockets	Maintenance and Garage	69
Suspension Springs	Sportsman	24
Sweatshirts	Apparel	89
Sweatshirts, Women	Apparel	92
Swing Arm Guard	High Performance	55
Tank Bag	Sportsman	37
Tank Bag	Phoenix and Sawtooth	59
Tie Down Straps	Sportsman	47
Tire Chains	Sportsman	24, 29
Tires	Sportsman	27-28
T-Necks	Apparel	91
T-Shirts	Apparel	90-91
T-Shirts, Women	Apparel	93
T-Shirts, Youth	Apparel	86
Twill Shirts	Apparel	91
Universal Plow	Sportsman	23
Vests	Apparel	83
Wear Bars, Plow	Sportsman	25
Whip Flag	Sportsman	37
Winch's	Sportsman	16-17
Windshields, Lock & Ride	Sportsman	32
Windshields, Lock & Ride	Phoenix and Sawtooth	59
Work Box, Lock & Ride	Sportsman	35
Work Tray	Sportsman	37



# FINANCIAL SERVICES

## StarCard Financing – Most convenient & quickest way to get a unit financed today!

- Financing options are available on all products in your dealership, both new & used, Polaris and Non-Polaris products
- Offers NO insurance and NO down payment requirements
- Opportunity to enhance dealership profitability
- Offers low monthly payment and fixed interest options
- Instant credit decisions



## POLARISTAR PROTECTION PLUS

Protect your customer's investment and give them the opportunity to ride worry-free.

**POLARISTAR** is protection backed by Polaris. It is the only extended mechanical breakdown coverage backed by Polaris. Protection is for all factory installed mechanical and electrical operating components. We offer coverage terms from 12 months to 5 years, with either a \$0 or \$50 deductible option. There are no mileage or hour limitations on covered parts.

Polaris provides coverage for vehicle repairs for 12 months – just a fraction of the life of a vehicle. **The POLARISTAR PROTECTION PLUS** plan provides coverage, and minimizes exposure to potential repair costs for up to 5 years.

Extended coverage protection typically costs less than one moderate failure. Protect your customer from these costly repairs.

Component, System or Part	Estimated repair cost WITHOUT POLARISTAR PROTECTION PLUS
Engine Overhaul	\$2,000 - \$2,500
Transmission Overhaul	\$1,800 - \$2,000
Differential Overhaul	\$1,000 - \$1,100
Cooling System	\$400 - \$600
Drive Axle Repair	\$600
Front Suspension	\$500
Starter	\$500

You can finance an Extended Service Contract for only \$10 more a month. Your customer most likely can afford \$10 more a month but most likely won't be able to pay for a major repair.

Help protect your customer's investment by offering them **POLARISTAR PROTECTION PLUS**.

See customer brochure for more information.

\*On approved Polaris StarCard accessory purchases. The estimated Minimum Monthly Payment is based on the products and US purchase prices shown. The amount of your total Minimum Monthly Payment will depend on additional purchases and account balances. See Cardholder Agreement and Disclosure Statement for details.



POLARIS

POLARIS

POLARIS SALES INC. 2100 HIGHWAY 55, MEDINA, MN 55340  
P. 763.542.0500 - F. 763.542.0599

©2007 Polaris Sales Inc. Printed in the USA, Part # 9936671  
Prices, part numbers and availability are subject to change.  
Visit your local Polaris Dealer for the most up-to-date information.



WWW.POLARISINDUSTRIES.COM